

1963 TRAWLER DE HASS NORTH SEA, WANDERBIRD — CUSTOM



Судостроитель: CUSTOM

Длина общая: 90' (27.43mm)

Год постройки: 1963

Ширина: 21

Модель: Крейсерская яхта

Цена: ЦЕНА ЯХТЫ ПО ЗАПРОСУ

Местонахождение: United States

Купить 1963 Trawler De Hass North Sea, Wanderbird — CUSTOM а также выбрать подходящую вам яхту из нашего каталога яхт вам поможет опытный яхтенный брокер Андрей Шестаков. На сегодняшний день компания Shestakov Yacht Sales Inc. имеет большое количество яхт в собственном списке продаж, а также тесно сотрудничает со всеми крупными яхтенными производителями по всему миру.

Для того чтобы купить яхту 1963 Trawler De Hass North Sea, Wanderbird — CUSTOM а также проконсультироваться по любому вопросу связанному с покупкой, продажей, чартером яхт позвоните по телефону **+7(918)465-66-44**.

ОГЛАВЛЕНИЕ

ОГЛАВЛЕНИЕ	2
ХАРАКТЕРИСТИКИ	6
Обзор	6
Основная информация	7
Размеры	7
Размещение	7
Корпус и палуба	7
Информация о двигателе	8
ФОТОГРАФИИ	9
1x1trans	9
8214557_20220212135546281_1_LARGE	9
8214557_20220212135550501_1_LARGE	9
8214557_20220212135554459_1_LARGE	9
8214557_20220212135558031_1_LARGE	9
8214557_20220212135602765_1_LARGE	9
8214557_20220212135605783_1_LARGE	9
8214557_20220212135609071_1_LARGE	9
8214557_20220212135615836_1_LARGE	10
8214557_20220212135618980_1_LARGE	10
8214557_20220212135622192_1_LARGE	10
8214557_20220212135624688_1_LARGE	10
8214557_20220212135627882_1_LARGE	10
8214557_20220212135630893_1_LARGE	10
8214557_20220212135633791_1_LARGE	10
8214557_20220212135636773_1_LARGE	10
8214557_20220212135640093_1_LARGE	11
8214557_20220212135646253_1_LARGE	11
8214557_20220212135652489_1_LARGE	11

8214557_20220212135655809_1_LARGE	11
8214557_20220212135659343_1_LARGE	11
8214557_20220212135702454_1_LARGE	11
8214557_20220212135706009_1_LARGE	11
8214557_20220212135711513_1_LARGE	11
8214557_20220212135714073_1_LARGE	12
8214557_20220212135717850_1_LARGE	12
8214557_20220212135722183_1_LARGE	12
8214557_20220212135726287_1_LARGE	12
8214557_20220212135729700_1_LARGE	12
8214557_20220212135732851_1_LARGE	12
8214557_20220212135737238_1_LARGE	12
8214557_20220212135743239_1_LARGE	12
8214557_20220212135747162_1_LARGE	13
8214557_20220212135751010_1_LARGE	13
8214557_20220212135755119_1_LARGE	13
8214557_20220212135758777_1_LARGE	13
8214557_20220212135802211_1_LARGE	13
8214557_20220212135805826_1_LARGE	13
8214557_20220212135808536_1_LARGE	13
8214557_20220212135811770_1_LARGE	13
8214557_20220212135814939_1_LARGE	14
8214557_20220212135817686_1_LARGE	14
8214557_20220212135820246_1_LARGE	14
8214557_20220212135824320_1_LARGE	14
8214557_20220212135827534_1_LARGE	14
8214557_20220212135831202_1_LARGE	14
8214557_20220212135835310_1_LARGE	14
8214557_20220212135839012_1_LARGE	14

8214557_20220212135842231_1_LARGE	15
8214557_20220212135845910_1_LARGE	15
8214557_20220212135848623_1_LARGE	15
8214557_20220212135852095_1_LARGE	15
8214557_20220212135855211_1_LARGE	15
8214557_20220212135858366_1_LARGE	15
8214557_20220212135901320_1_LARGE	15
8214557_20220212135904685_1_LARGE	15
8214557_20220212135907722_1_LARGE	16
8214557_20220212135910743_1_LARGE	16
8214557_20220212135913757_1_LARGE	16
8214557_20220212135920083_1_LARGE	16
8214557_20220212135922942_1_LARGE	16
8214557_20220212135930837_1_LARGE	16
8214557_20220212135938595_1_LARGE	17
8214557_20220212135936839_1_LARGE	17
8214557_20220212135945728_1_LARGE	17
8214557_20220212135942831_1_LARGE	17
8214557_20220212135948982_1_LARGE	17
8214557_20220212135953066_1_LARGE	17
8214557_20220212135959061_1_LARGE	18
8214557_20220212140003512_1_LARGE	18
8214557_20220212140007395_1_LARGE	18
8214557_20220212140009486_1_LARGE	18
8214557_20220212140011606_1_LARGE	18
КОНТАКТЫ	19
Контактная информация	19
Телефоны	19
Время работы	19

Адрес

19

ХАРАКТЕРИСТИКИ

Обзор

Up for Auction with No Reserve! Starting bid \$100,000 Buy it Now \$225,000

Auction is for a Donation Vessel on a Charter Lease Purchase

Showings can be made by appointment

The *Wanderbird* is a 90' long steel-hulled trawler originally designed for fishing in the North Sea. Built in 1963 in Holland, she was converted to pleasure use in 1990. Powered by a single 510 HP diesel, range is an eye-popping 6,000 miles. Cruising speed is 7.5 knots, maximum is 10 knots, and the boat has an auxiliary ketch sailing rig. Important equipment includes three generators, a 1600 watt inverter, complete electronics and safety gear (including two life boats), and a rocket-propelled line-launcher. Accommodations feature six cabins with private heads and hand-made quilts and rugs. The *Wanderbird* is currently berthed in Gloucester.

SURVEY AVAILABLE UPON REQUEST

WANDERBIRD is a North Sea fishing trawler converted to a very comfortable long range expedition trawler. This stout refitted vessel is the culmination of our over forty years combined experience as professional mariners. We have drawn from our experience of carrying passengers on a traditional rigged sailing ship to create a custom design for your safety and comfort. WANDERBIRD is a combination of several elements: a traditional ketch auxiliary sailing rig, beautiful wood interiors with classic yacht design from the 1940s, a charming and cozy galley, the strength and integrity of a working fishing vessel, a fuel range of 6000 nautical miles, and capabilities for offshore adventure. We invite you to join us aboard this extraordinary vessel to experience the era of tramp steamer voyages! Wanderbird was built as a classic North Sea fishing trawler by the H. de Haas shipyard in Maassluis, Holland. She was launched as beam trawler for a Dutch fishing family, in 1963 and fished until 1990. A beam or side trawl carries fishing nets from the side of the vessel. Dimensions: >Length - 90 feet on deck >Beam 21 feet >Draft 10 feet >112 Gross Tonnage >Mechanical: >Powerful Industrie 510hp diesel engine, three generators, and fuel capacity to carry her 6,000 nautical miles. Economy speed 7.0 knots, cruise 7.5 knots, max 10 knots Fuel consumption 7-8 GPH at 7.5 knots or 1 mile per gallon Electrical 24 volt DC with 1600 Watt inverter. Will maintain on battery charge 12 to 14 hours before charging. Navigation & Electronics: >3 VHF radios, 2 radar sets, Sailor Radio Equipment, 3 GPS, wind instruments, satellite communications, depth sounder, forward looking sonar, SSB radio telephone, compass, autopilot, weather fax, Furuno NavTex receiver, electronic chart plotters, computer, and cellular phone. Safety and Equipment: >Owner operated, WANDERBIRD meets or exceeds all safety requirements for her class of transportation, and Lloyd's specifications for vessels carrying passengers: offshore First Aid kit, full fire detection & fire fighting equipment, high water alarms, Coast Guard approved life jackets, Coast Guard approved survival suits, 2 life

boats, 2 buoyant apparatus (20-person capacity), inflatable life rafts, 2 each E.P.I.R.B., oversize life rings with emergency strobe lights, rocket propelled line launchers, full flare kit, 6 watertight compartments, marine safety & First Aid certified crew. >Amenities: >Intimate Setting - 12 Passengers Aboard Our 90 Foot Vessel >Varnished Woodwork in Galley, Library, Dining Area & Deck Salon >Large Spacious Teak Decks >Ample Comfortable Seating in the Wheelhouse >Spacious, Bright & Open Galley >6 Cozy and Comfortable Double Cabins >Private Head & Shower in Each Cabin >Observation Deck, Rattan & Teak Steamer Chairs >Two Small Boats for Shore Side Adventures >Cabins > Private Head (Marine Toilet) > Sink with Running Water > Private Shower > Reading Lights & Stocked Book Case > 110 Volt AC Power & Heat > Linens, Soft Wool Blankets & Towels > Hand Made Soaps > Under Bunk Stowage & Closet with Shelves > Local Arts & Crafts > Hand Made Quilts & Rugs > Small Writing Desk

Auctioneer reserves the right to pull Yacht from Auction at anytime

NoteThe Company offers the details of this vessel in good faith but cannot guarantee or warrant the accuracy of this information nor warrant the condition of the vessel. A buyer should instruct his agents, or his surveyors, to investigate such details as the buyer desires validated. This vessel is offered subject to prior sale, price change, or withdrawal without notice.

Основная информация

Тип судна: Крейсерская яхта

Модельный год: 1963

Год постройки: 1963

Страна: United States

Размеры

Длина общая: 90' (27.43mm)

Ширина: 21

Размещение

Всего кают: 6

Комм. состав экипажа: 8

Корпус и палуба

Материал корпуса: Steel

Информация о двигателе

Двигатели: 1

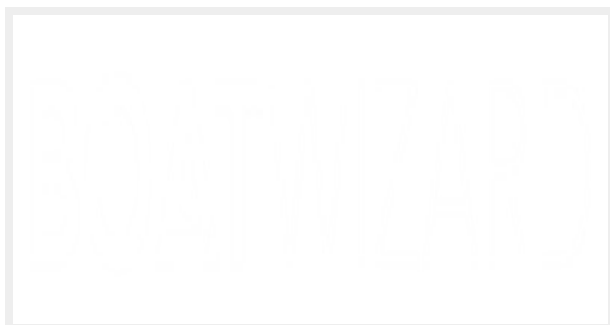
Производитель: Owner's Choice

Тип двигателя: Inboard

Тип топлива: Diesel

ФОТОГРАФИИ

1x1trans



8214557_20220212135546281_1_LARGE



8214557_20220212135550501_1_LARGE



8214557_20220212135554459_1_LARGE



8214557_20220212135558031_1_LARGE



8214557_20220212135602765_1_LARGE



8214557_20220212135605783_1_LARGE



8214557_20220212135609071_1_LARGE



8214557_20220212135615836_1_LARGE



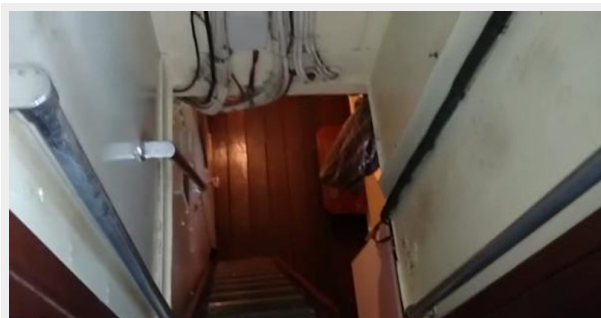
8214557_20220212135618980_1_LARGE



8214557_20220212135622192_1_LARGE



8214557_20220212135624688_1_LARGE



8214557_20220212135627882_1_LARGE



8214557_20220212135630893_1_LARGE



8214557_20220212135633791_1_LARGE



8214557_20220212135636773_1_LARGE



8214557_20220212135640093_1_LARGE



8214557_20220212135646253_1_LARGE



8214557_20220212135652489_1_LARGE



8214557_20220212135655809_1_LARGE



8214557_20220212135659343_1_LARGE



8214557_20220212135702454_1_LARGE



8214557_20220212135706009_1_LARGE



8214557_20220212135711513_1_LARGE



8214557_20220212135714073_1_LARGE



8214557_20220212135717850_1_LARGE



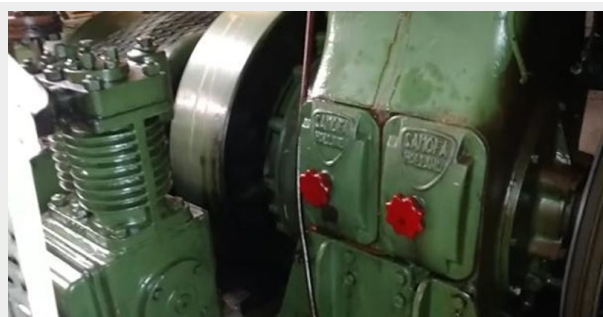
8214557_20220212135722183_1_LARGE



8214557_20220212135726287_1_LARGE



8214557_20220212135729700_1_LARGE



8214557_20220212135732851_1_LARGE



8214557_20220212135737238_1_LARGE



8214557_20220212135743239_1_LARGE



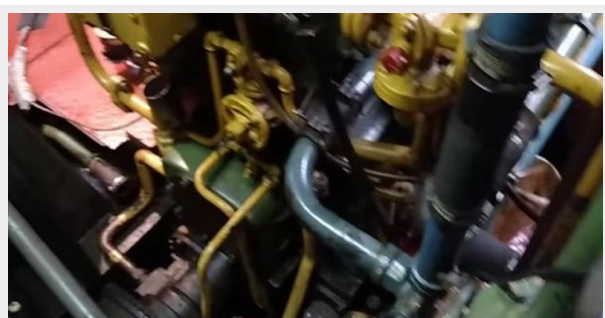
8214557_20220212135747162_1_LARGE



8214557_20220212135751010_1_LARGE



8214557_20220212135755119_1_LARGE



8214557_20220212135758777_1_LARGE



8214557_20220212135802211_1_LARGE



8214557_20220212135805826_1_LARGE



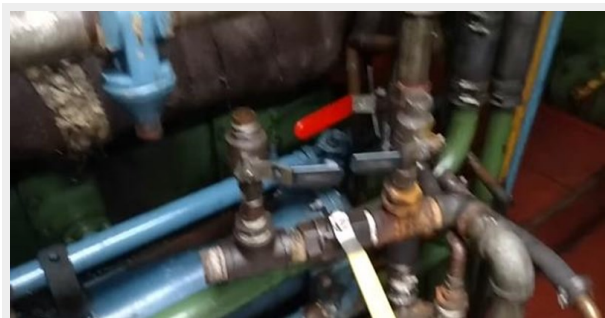
8214557_20220212135808536_1_LARGE



8214557_20220212135811770_1_LARGE



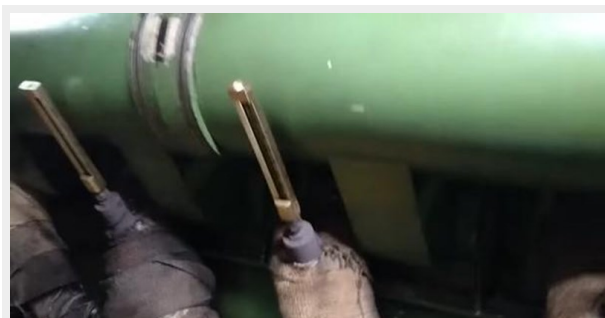
8214557_20220212135814939_1_LARGE



8214557_20220212135817686_1_LARGE



8214557_20220212135820246_1_LARGE



8214557_20220212135824320_1_LARGE



8214557_20220212135827534_1_LARGE



8214557_20220212135831202_1_LARGE



8214557_20220212135835310_1_LARGE



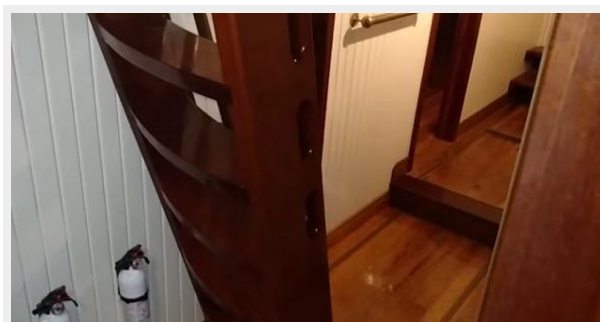
8214557_20220212135839012_1_LARGE



8214557_20220212135842231_1_LARGE



8214557_20220212135845910_1_LARGE



8214557_20220212135848623_1_LARGE



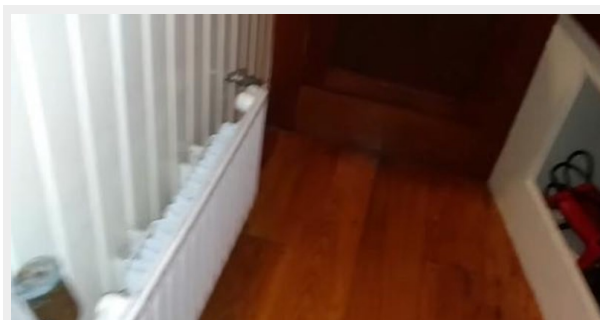
8214557_20220212135852095_1_LARGE



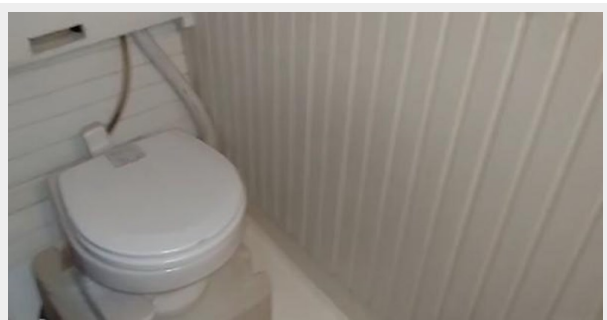
8214557_20220212135855211_1_LARGE



8214557_20220212135858366_1_LARGE



8214557_20220212135901320_1_LARGE



8214557_20220212135904685_1_LARGE



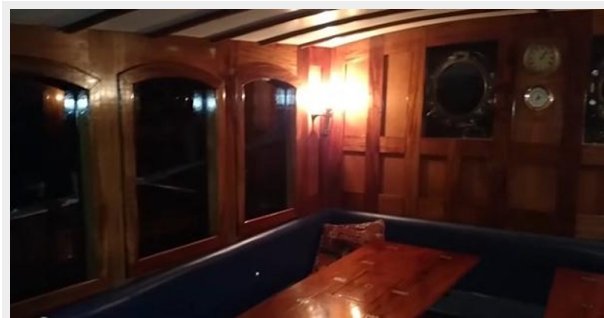
8214557_20220212135907722_1_LARGE



8214557_20220212135910743_1_LARGE



8214557_20220212135913757_1_LARGE



8214557_20220212135920083_1_LARGE



8214557_20220212135922942_1_LARGE



8214557_20220212135930837_1_LARGE



8214557_20220212135938595_1_LARGE



8214557_20220212135936839_1_LARGE



8214557_20220212135945728_1_LARGE



8214557_20220212135942831_1_LARGE



8214557_20220212135953066_1_LARGE



8214557_20220212135948982_1_LARGE



8214557_20220212135959061_1_LARGE



8214557_20220212140003512_1_LARGE



8214557_20220212140007395_1_LARGE



8214557_20220212140009486_1_LARGE



8214557_20220212140011606_1_LARGE



КОНТАКТЫ

Андрей Шестаков (Andrey Shestakov) – ведущий яхтенный брокер отдела продаж яхт и судов компании Shestakov Yacht Sales Inc. Официальный представитель Shestakov Yacht Sales Inc. для русскоговорящих клиентов в центральном офисе компании в Майами/Форт Лодердейл/Флорида/США.

Контактная информация

Email: andrey@shestakovyachtsales.com

Web: shestakovyachtsales.com

Телефоны

Краснодарский край: **+7(918)465-66-44**

США, Майами, Флорида: **+1(954)274-4435**

Время работы

Понедельник – Суббота: **9:00 - 21:00**
EDT

Воскресенье: **Закрыто**

Адрес



Harbour Towne Marina, 850 NE 3rd St,
STE 213, Dania, FL 33004