

ALEXA PAIGE — RANGER TUGS



Builder: RANGER TUGS

Year Built: 2016

Model: Boats

Price: PRICE ON APPLICATION

Location: United States

LOA: 21' (6.4mm)

Beam: 6.66

Cruise Speed: 4.34 Knots Kts. (5 MPH)

Max Speed: 6.95 Knots Kts. (8 MPH)

Our experienced yacht broker, Andrey Shestakov, will help you choose and buy a yacht that best suits your needs **Alexa Paige — RANGER TUGS** from **our catalogue**. Presently, at **Shestakov Yacht Sales Inc.**, we have a wide variety of yachts available on **our sale's list**. We also work in close contact with all the big **yacht manufacturers** from all over the world.

If you would like to buy a yacht **Alexa Paige — RANGER TUGS** or would like help answering any questions concerning purchasing, selling or chartering a yacht, please call **+1(954)274-4435**

TABLE OF CONTENTS

TABLE OF CONTENTS	2
SPECIFICATIONS	5
Basic Information	5
Dimensions	5
Speed, Capacities and Weight	5
Accommodations	5
Hull and Deck Information	5
Engine Information	5
PHOTOS	6
IMG_4934	6
IMG_4936	6
IMG_4940	6
IMG_4938	6
IMG_4941	7
IMG_4943	7
IMG_4944	7
IMG_4945	7
IMG_4948	7
IMG_4949	7
IMG_4950	8
IMG_4951	8
IMG_4955	8
IMG_4954	8
IMG_4956	9
IMG_4957	9
IMG_4958	9
IMG_4959	9
IMG_4961	10

IMG_4963	10
IMG_4964	10
IMG_4965	10
IMG_4966	10
IMG_4967	10
IMG_4969	11
IMG_4968	11
IMG_4971	11
IMG_4972	11
IMG_4973	12
IMG_4975	12
IMG_4976	12
IMG_4977	12
IMG_4978	13
IMG_4980	13
IMG_4981	13
IMG_4982	13
IMG_4983	14
IMG_4984	14
IMG_4985	14
IMG_4986	14
IMG_4988	15
IMG_4989	15
IMG_4990	15
IMG_4991	15
IMG_4942	16
IMG_4953	16
IMG_4962	16
IMG_4970	16

IMG_4987	17
IMG_4979	17
CONTACTS	18
Contact details	18
Telephones	18
Office hours	18
Address	18

SPECIFICATIONS

Basic Information

Category: Boats

Model Year: 2016

Year Built: 2016

Country: United States

Dimensions

LOA: 21' (6.4mm)

Beam: 6.66

Speed, Capacities and Weight

Cruise Speed: 4.34 Knots Kts. (5 MPH) **Max Speed:** 6.95 Knots Kts. (8 MPH)

Water Capacity: 10 Gallons

Fuel Capacity: 18 Gal Gallons

Accommodations

Total Cabins: 1

Hull and Deck Information

Hull Material: Fiberglass

Engine Information

Engines: 1

Manufacturer: Volvo Penta

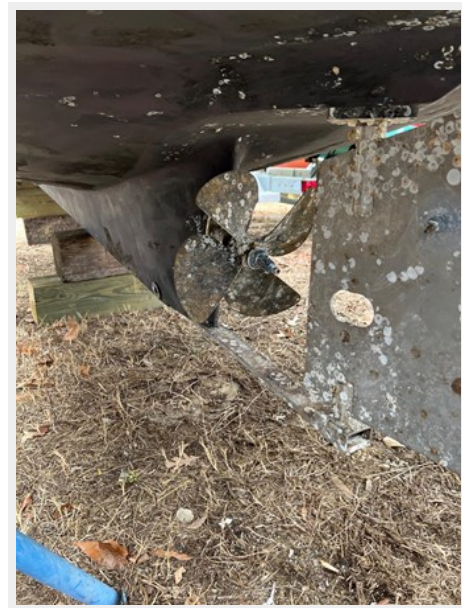
Fuel Type: Diesel

PHOTOS

IMG_4934



IMG_4936



IMG_4940



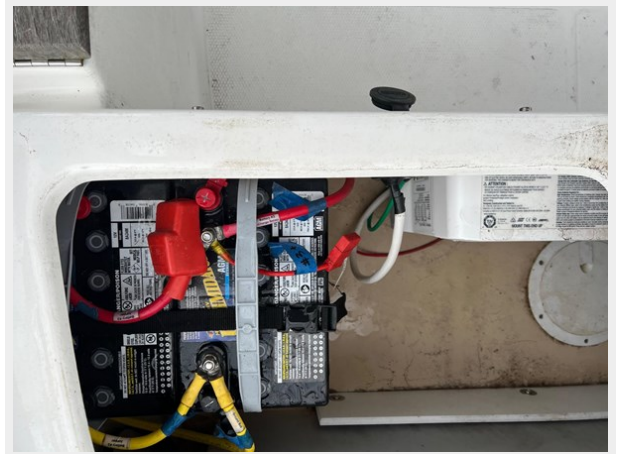
IMG_4938



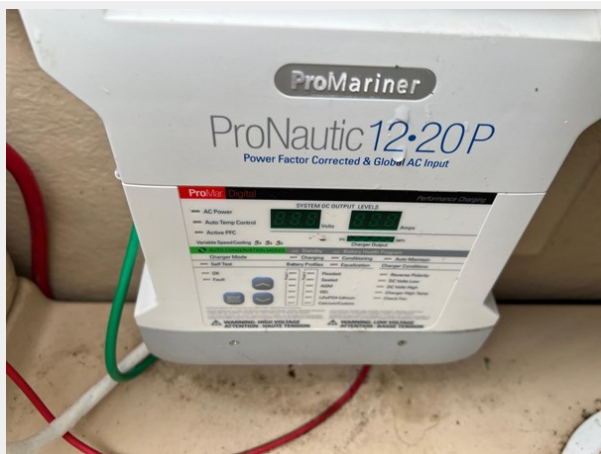
IMG_4941



IMG_4943



IMG_4944



IMG_4945



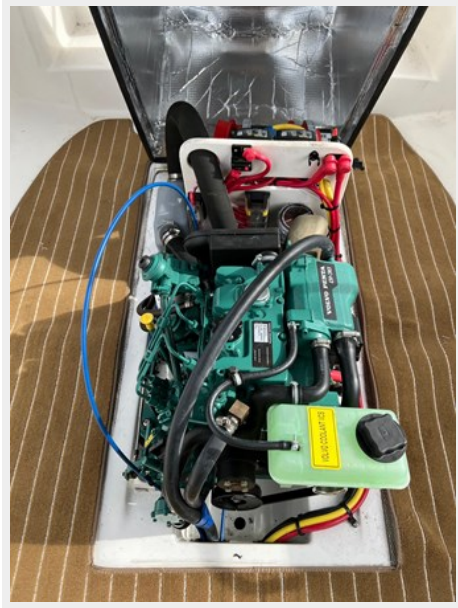
IMG_4948



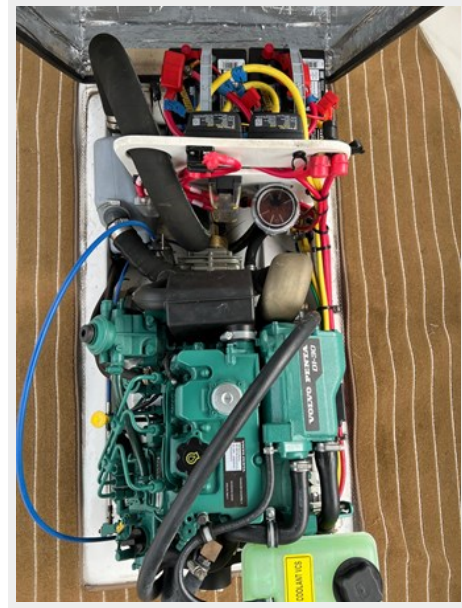
IMG_4949



IMG_4950

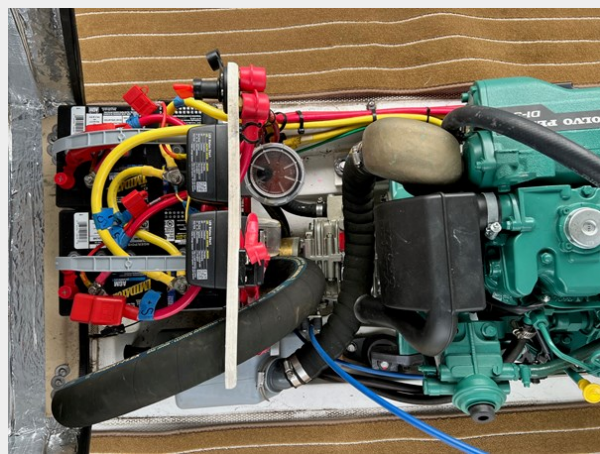


IMG_4951



IMG_4955

IMG_4954



IMG_4956



IMG_4957



IMG_4958



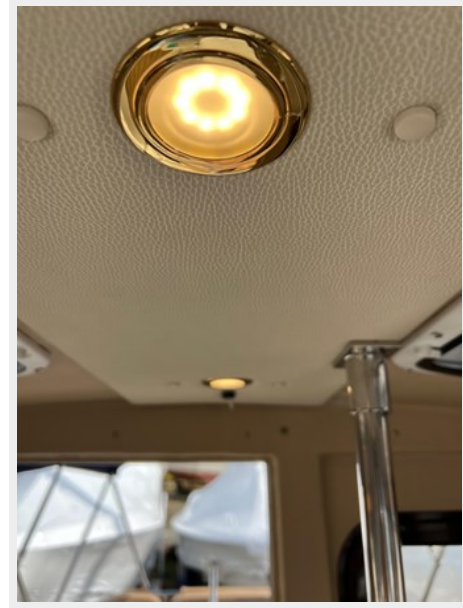
IMG_4959



IMG_4961



IMG_4963



IMG_4964



IMG_4965



IMG_4966



IMG_4967



IMG_4968



IMG_4969



IMG_4971



IMG_4972



IMG_4973



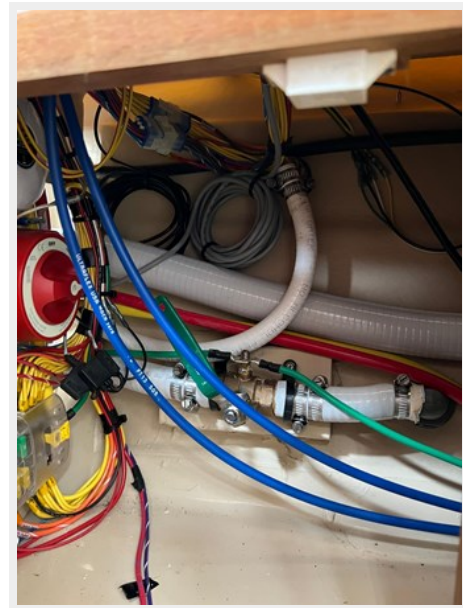
IMG_4975



IMG_4976



IMG_4977



IMG_4978



IMG_4980



IMG_4981



IMG_4982



IMG_4983



IMG_4984



IMG_4985



IMG_4986



IMG_4988



IMG_4989



IMG_4990



IMG_4991



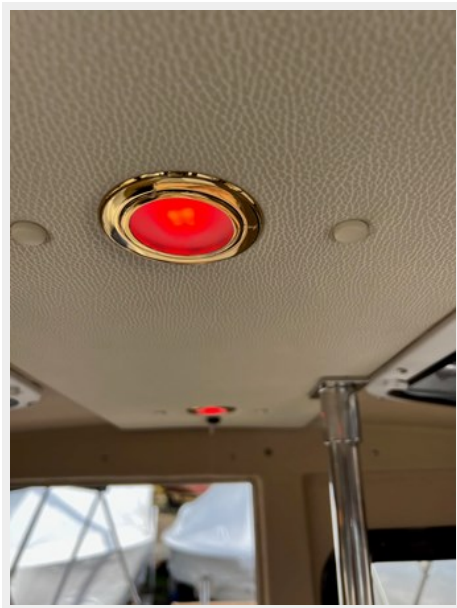
IMG_4942



IMG_4953



IMG_4962



IMG_4970



IMG_4979



IMG_4987



CONTACTS

Andrey Shestakov, leading yacht broker of the sales department of Shestakov Yacht Sales Inc. Shestakov Yacht Sales Inc., the official representative of the Miami/Fort Lauderdale FL headquarters.

Contact details

Email: **andrey@shestakovyachtsales.com**

Web: shestakovyachtsales.com/en/

Telephones

USA: **+1(954)274-4435**

Office hours

Monday – Saturday: **9:00 - 21:00** EDT

Sunday: **closed**

Address



Harbour Towne Marina, 850 NE 3rd St, STE 213, Dania, FL 33004