

TAKE IT DEEP — HATTERAS



Builder: HATTERAS

Year Built: 2006

Model: Sport Fisherman

Price: PRICE ON APPLICATION

Location: United States

LOA: 60' 1" (18.31mm)

Beam: 17.33

Max Draft: 4' 11" (1.5mm)

Cruise Speed: 22.59 Knots Kts. (26 MPH)

Max Speed: 30.07 Knots Kts. (35 MPH)

Our experienced yacht broker, Andrey Shestakov, will help you choose and buy a yacht that best suits your needs **Take It Deep — HATTERAS** from our catalogue. Presently, at Shestakov Yacht Sales Inc., we have a wide variety of yachts available on our sale's list. We also work in close contact with all the big yacht manufacturers from all over the world.

If you would like to buy a yacht **Take It Deep — HATTERAS** or would like help answering any questions concerning purchasing, selling or chartering a yacht, please call **+1(954)274-4435**

TABLE OF CONTENTS

TABLE OF CONTENTS	2
SPECIFICATIONS	4
Overview	4
Basic Information	4
Dimensions	4
Speed, Capacities and Weight	4
Accommodations	4
Hull and Deck Information	4
Engine Information	5
PHOTOS	6
Port Side View	6
Main Salon Looking Aft	6
Salon - Window Covering	6
Salon Settee	6
Galley - Marble Counter with Recessed Storage Drawers in Backsplash	6
Subzero 700-BR Under-Counter Refrigerator Drawers [Two]	6
Storage Cabinets	7
Galley to Port and Dinette to Starboard	7
Master Head	7
Master Stateroom	7
Forward VIP to Port	7
Forward VIP Stateroom	7
Berth Storage	8
VIP Starboard Aft and Flat Screen TV	8
Guest Over Under Berths	8
VIP Head	8
Guest Over Under Berths	9
Guest Head	9

Guest Head	9
Guest Shower	9
Washer and Dryer	10
Bow View	10
Port Bow	10
Enclosed Bridge Helm	10
Built-In Cabinetry Starboard with Marble Top	10
Bridge Aft Deck Helm	10
Bridge Aft Deck Seating	11
Foredeck View From Tower	11
Tower Helm	11
Tower Helm	11
Tower Helm Seat	11
Cockpit View From Tower	11
Cockpit - Bluewater Battle Saddle Station (2020)	12
Cockpit Forward	12
CONTACTS	13
Contact details	13
Telephones	13
Office hours	13
Address	13

SPECIFICATIONS

Overview

2006 Hatteras 60 Convertible

Basic Information

Category: Sport Fisherman

Model Year: 2006

Year Built: 2006

Country: United States

Dimensions

LOA: 60' 1" (18.31mm)

LWL: 51' 11" (15.82mm)

Beam: 17.33

Max Draft: 4' 11" (1.5mm)

Speed, Capacities and Weight

Cruise Speed: 22.59 Knots Kts. (26 MPH)

Max Speed: 30.07 Knots Kts. (35 MPH)

Water Capacity: 200 Gallons

Holding Tank: 100 Gal Gallons

Fuel Capacity: 1747 Gal Gallons

Accommodations

Total Cabins: 4

Sleeps: 8

Total Heads: 3

Hull and Deck Information

Hull Material: Fiberglass

Engine Information

Engines: 2

Manufacturer: Caterpillar

Engine Type: Inboard

Fuel Type: Diesel

PHOTOS

Port Side View



Main Salon Looking Aft



Salon - Window Covering



Salon Settee



Galley - Marble Counter with Recessed Storage Drawers in Backsplash



Subzero 700-BR Under-Counter Refrigerator Drawers [Two]



Storage Cabinets



Galley to Port and Dinette to Starboard



Master Head



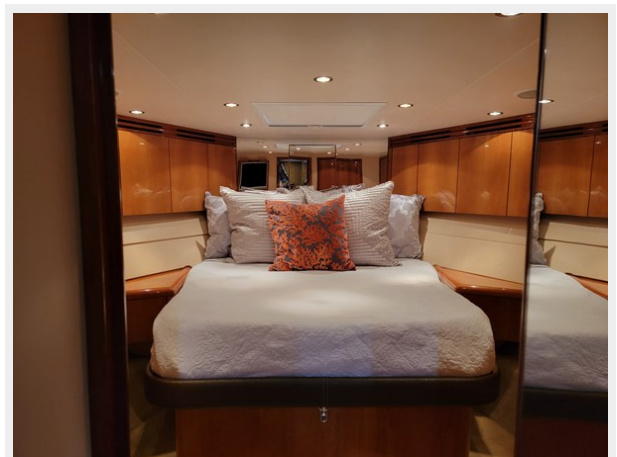
Master Stateroom



Forward VIP to Port



Forward VIP Stateroom



Berth Storage



VIP Starboard Aft and Flat Screen TV



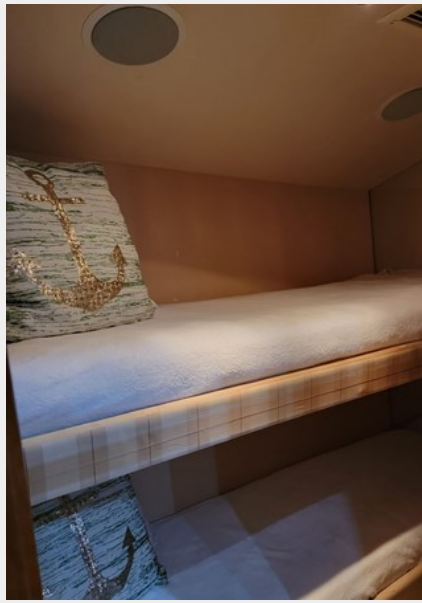
VIP Head



Guest Over Under Berths



Guest Over Under Berths



Guest Head



Guest Head



Guest Shower



Washer and Dryer



Bow View



Port Bow



Enclosed Bridge Helm



Built-In Cabinetry Starboard with Marble Top



Bridge Aft Deck Helm



Bridge Aft Deck Seating



Foredeck View From Tower



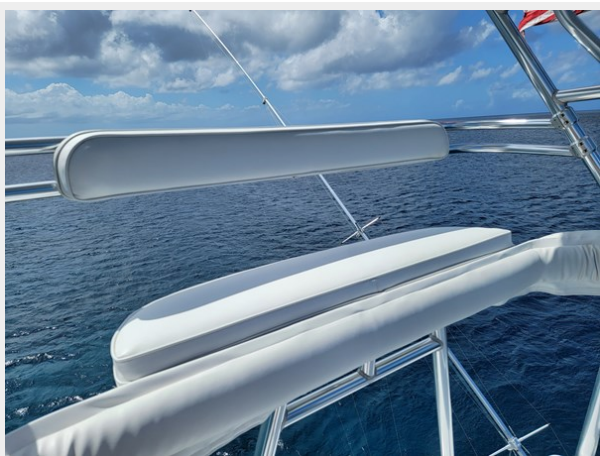
Tower Helm



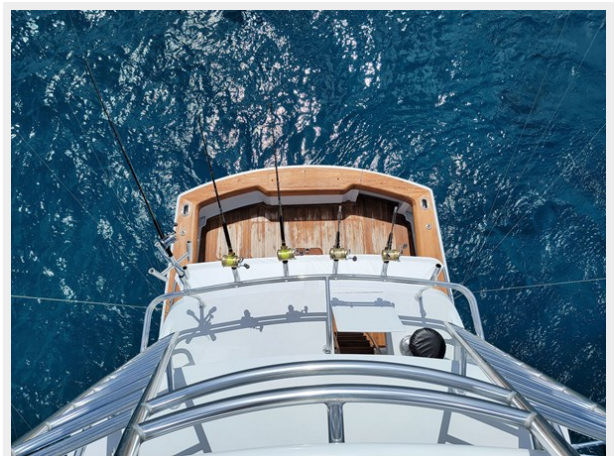
Tower Helm



Tower Helm Seat



Cockpit View From Tower



Cockpit Forward



**Cockpit - Bluewater Battle Saddle Station
(2020)**



CONTACTS

Andrey Shestakov, leading yacht broker of the sales department of Shestakov Yacht Sales Inc. Shestakov Yacht Sales Inc., the official representative of the Miami/Fort Lauderdale FL headquarters.

Contact details

Email: andrey@shestakovyachtsales.com

Web: shestakovyachtsales.com/en/

Telephones

USA: +1(954)274-4435

Office hours

Monday – Saturday: **9:00 - 21:00** EDT

Sunday: **closed**

Address



Harbour Towne Marina, 850 NE 3rd St,
STE 213, Dania, FL 33004