

SOFT LANDING — GRAND BANKS



Builder: GRAND BANKS

Year Built: 2002

Model: Trawler Yacht

Price: PRICE ON APPLICATION

Location: United States

LOA: 46' (14.02mm)

Beam: 14.91

Max Draft: 4' 2" (1.27mm)

Our experienced yacht broker, Andrey Shestakov, will help you choose and buy a yacht that best suits your needs **Soft Landing — GRAND BANKS** from our catalogue. Presently, at Shestakov Yacht Sales Inc., we have a wide variety of yachts available on our sale's list. We also work in close contact with all the big yacht manufacturers from all over the world.

If you would like to buy a yacht **Soft Landing — GRAND BANKS** or would like help answering any questions concerning purchasing, selling or chartering a yacht, please call **+1(954)274-4435**

TABLE OF CONTENTS

TABLE OF CONTENTS	2
SPECIFICATIONS	5
Overview	5
Basic Information	5
Dimensions	5
Speed, Capacities and Weight	5
Accommodations	5
Hull and Deck Information	6
Engine Information	6
PHOTOS	7
7308600_20200117093735168_1_XLARGE	7
7308600_20200117093741718_1_XLARGE	7
7308600_20200117093747576_1_XLARGE	7
7308600_20200117093753581_1_XLARGE	7
7308600_20200117093802869_1_XLARGE	7
7308600_20200117093809509_1_XLARGE	7
7308600_20200117093827923_1_XLARGE	8
7308600_20200117093842998_1_XLARGE	8
7308600_20200117093839826_1_XLARGE	8
7308600_20200117093846135_1_XLARGE	8
7308600_20200117093831055_1_XLARGE	8
7308600_20200117093835861_1_XLARGE	8
7308600_20200117093856804_1_XLARGE	9
7308600_20200117093852595_1_XLARGE	9
7308600_20200117093849063_1_XLARGE	9
7308600_20200117093914263_1_XLARGE	9
7308600_20200117093919553_1_XLARGE	9
7308600_20200117093923303_1_XLARGE	9

7308600_20200117093900254_1_XLARGE	10
7308600_20200117093905380_1_XLARGE	10
7308600_20200117093909399_1_XLARGE	10
7308600_20200117093937407_1_XLARGE	10
7308600_20200117093935535_1_XLARGE	10
7308600_20200117093927751_1_XLARGE	10
7308600_20200117093943160_1_XLARGE	11
7308600_20200117093945077_1_XLARGE	11
7308600_20200117093946989_1_XLARGE	11
7308600_20200117093931631_1_XLARGE	11
7308600_20200117093939333_1_XLARGE	11
7308600_20200117093941316_1_XLARGE	11
7308600_20200117093948906_1_XLARGE	12
7308600_20200117093950877_1_XLARGE	12
7308600_20200117093952965_1_XLARGE	12
7308600_20200117094003475_1_XLARGE	12
7308600_20200117094000968_1_XLARGE	12
7308600_20200117094005590_1_XLARGE	12
7308600_20200117094007508_1_XLARGE	13
7308600_20200117094011495_1_XLARGE	13
7308600_20200117094017413_1_XLARGE	13
7308600_20200117094015640_1_XLARGE	13
7308600_20200117094013446_1_XLARGE	13
7308600_20200117094019460_1_XLARGE	13
7308600_20200117094021715_1_XLARGE	14
7308600_20200117094023491_1_XLARGE	14
7308600_20200117094025128_1_XLARGE	14
7308600_20200117094027212_1_XLARGE	14
7308600_20200117094029293_1_XLARGE	15

7308600_20200117094033310_1_XLARGE	15
7308600_20200117094054888_1_XLARGE	15
7308600_20200117094053023_1_XLARGE	15
7308600_20200117094035274_1_XLARGE	15
7308600_20200117094059414_1_XLARGE	15
7308600_20200117094045125_1_XLARGE	16
7308600_20200117094051164_1_XLARGE	16
7308600_20200117094039003_1_XLARGE	16
7308600_20200117094043092_1_XLARGE	16
7308600_20200117094041115_1_XLARGE	16
7308600_20200117094049164_1_XLARGE	16
7308600_20200117094047370_1_XLARGE	17
7308600_20200117094031285_1_XLARGE	17
7308600_20200117093737585_1_XLARGE	17
7308600_20200117094037071_1_XLARGE	17
CONTACTS	18
Contact details	18
Telephones	18
Office hours	18
Address	18

SPECIFICATIONS

Overview

Brand New Bottom/Running Gear Paint and Zincs. May 2022

This is a very fine 2002 Grand Banks 46' to come on the market! Current Owner bought this beautiful vessel in very good condition and then went to work to make it outstanding. Upgrading every system that needed attention, added 3 new Air Conditioners, Total new unit for freezer and refrigeration, Bottom done in 10/2019, exterior teak varnish three coats in Nov. 21' Complete annual service from Cat including new water pumps and a New 310 Highfield Dinghy w/15 Hp. fuel injected Tohatsu 2021. 20 hr. service done.

Basic Information

Category: Trawler Yacht

Sub Category: Aft Cabin

Model Year: 2002

Year Built: 2002

Country: United States

Dimensions

LOA: 46' (14.02mm)

Beam: 14.91

Max Draft: 4' 2" (1.27mm)

Speed, Capacities and Weight

Water Capacity: 295 Gallons

Holding Tank: 60 Gal Gallons

Fuel Capacity: 600 Gal Gallons

Accommodations

Total Cabins: 2

Hull and Deck Information

Hull Material: Fiberglass

Engine Information

Engines: 2

Manufacturer: Caterpillar

Engine Type: Inboard

Fuel Type: Diesel

PHOTOS

7308600_20200117093735168_1_XLARGE



7308600_20200117093741718_1_XLARGE



7308600_20200117093747576_1_XLARGE



7308600_20200117093753581_1_XLARGE



7308600_20200117093802869_1_XLARGE



7308600_20200117093809509_1_XLARGE



7308600_20200117093827923_1_XLARGE



7308600_20200117093842998_1_XLARGE



7308600_20200117093839826_1_XLARGE



7308600_20200117093846135_1_XLARGE



7308600_20200117093835861_1_XLARGE



7308600_20200117093831055_1_XLARGE



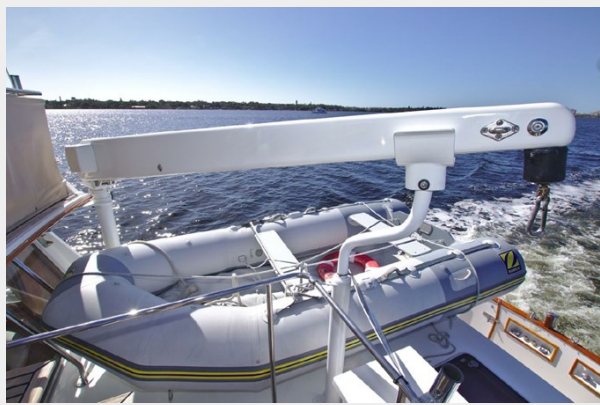
7308600_20200117093856804_1_XLARGE



7308600_20200117093852595_1_XLARGE



7308600_20200117093849063_1_XLARGE



7308600_20200117093914263_1_XLARGE



7308600_20200117093919553_1_XLARGE



7308600_20200117093923303_1_XLARGE



7308600_20200117093900254_1_XLARGE



7308600_20200117093905380_1_XLARGE



7308600_20200117093909399_1_XLARGE



7308600_20200117093937407_1_XLARGE



7308600_20200117093935535_1_XLARGE



7308600_20200117093927751_1_XLARGE



7308600_20200117093943160_1_XLARGE



7308600_20200117093945077_1_XLARGE



7308600_20200117093946989_1_XLARGE



7308600_20200117093931631_1_XLARGE



7308600_20200117093939333_1_XLARGE



7308600_20200117093941316_1_XLARGE



7308600_20200117093948906_1_XLARGE



7308600_20200117093950877_1_XLARGE



7308600_20200117093952965_1_XLARGE



7308600_20200117094003475_1_XLARGE



7308600_2020011709400968_1_XLARGE



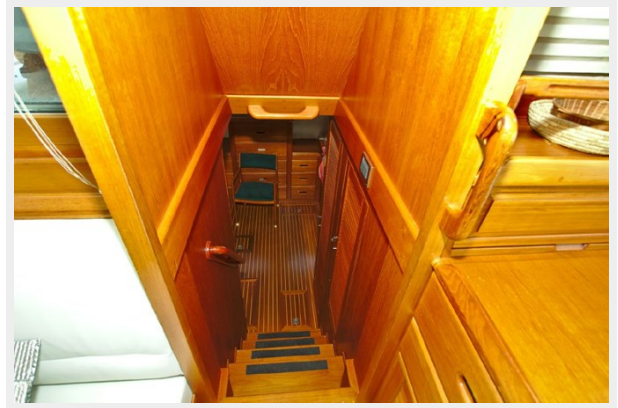
7308600_20200117094005590_1_XLARGE



7308600_20200117094007508_1_XLARGE



7308600_20200117094011495_1_XLARGE



7308600_20200117094017413_1_XLARGE



7308600_20200117094015640_1_XLARGE



7308600_20200117094013446_1_XLARGE



7308600_20200117094019460_1_XLARGE



7308600_20200117094021715_1_XLARGE



7308600_20200117094023491_1_XLARGE



7308600_20200117094025128_1_XLARGE



7308600_20200117094027212_1_XLARGE



7308600_20200117094029293_1_XLARGE



7308600_20200117094033310_1_XLARGE



7308600_20200117094054888_1_XLARGE



7308600_20200117094053023_1_XLARGE



7308600_20200117094035274_1_XLARGE



7308600_20200117094059414_1_XLARGE



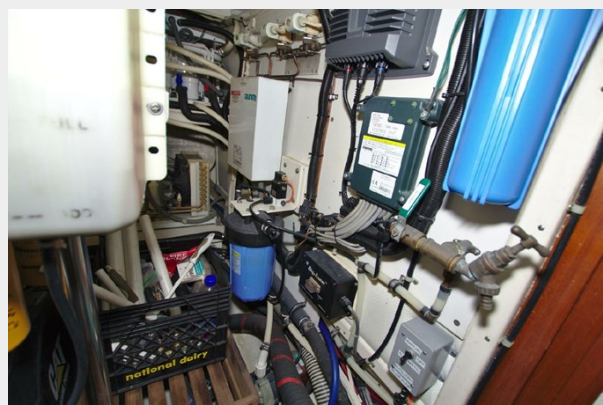
7308600_20200117094045125_1_XLARGE



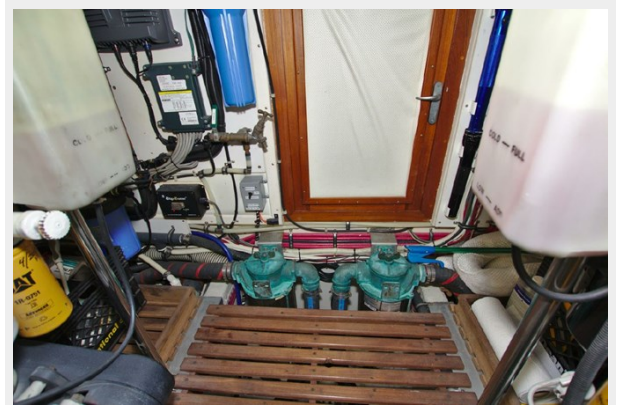
7308600_20200117094051164_1_XLARGE



7308600_20200117094039003_1_XLARGE



7308600_20200117094043092_1_XLARGE



7308600_20200117094041115_1_XLARGE



7308600_20200117094049164_1_XLARGE



7308600_20200117094047370_1_XLARGE



7308600_20200117094031285_1_XLARGE



7308600_20200117094037071_1_XLARGE



7308600_20200117093737585_1_XLARGE



CONTACTS

Andrey Shestakov, leading yacht broker of the sales department of Shestakov Yacht Sales Inc. Shestakov Yacht Sales Inc., the official representative of the Miami/Fort Lauderdale FL headquarters.

Contact details

Email: andrey@shestakovyachtsales.com

Web: shestakovyachtsales.com/en/

Telephones

USA: +1(954)274-4435

Office hours

Monday – Saturday: **9:00 - 21:00** EDT

Sunday: **closed**

Address



Harbour Towne Marina, 850 NE 3rd St,
STE 213, Dania, FL 33004