

BLUES CRUISE — MANTA



Builder: MANTA

Year Built: 2005

Model: Motor Yacht

Price: PRICE ON APPLICATION

Location: United States

LOA: 44' (13.41mm)

Beam: 21

Cruise Speed: 15 Knots Kts. (17 MPH)

Max Speed: 22 Knots Kts. (25 MPH)

Our experienced yacht broker, Andrey Shestakov, will help you choose and buy a yacht that best suits your needs **Blues Cruise — MANTA** from **our catalogue**. Presently, at **Shestakov Yacht Sales Inc.**, we have a wide variety of yachts available on **our sale's list**. We also work in close contact with all the big **yacht manufacturers** from all over the world.

If you would like to buy a yacht **Blues Cruise — MANTA** or would like help answering any questions concerning purchasing, selling or chartering a yacht, please call **+1(954)274-4435**

TABLE OF CONTENTS

TABLE OF CONTENTS	2
SPECIFICATIONS	9
Overview	9
Basic Information	9
Dimensions	9
Speed, Capacities and Weight	9
Accommodations	9
Hull and Deck Information	10
Engine Information	10
PHOTOS	11
01	11
02	11
03	11
04	11
06	11
07	11
08	12
09	12
11	12
12	12
13	13
14	13
18	13
21	13
24	13
25	13
28	14
27	14

29	14
30	14
31	14
32	14
36	15
37	15
40	15
41	15
43	15
45	15
46	16
47	16
50	16
48	16
51	17
52	17
53	17
54	17
55	17
57	17
61	18
59	18
62	18
63	18
64	18
65	18
67	19
66	19
68	19

69	19
70	19
72	19
74	20
75	20
76	20
77	20
80	20
81	20
82	21
84	21
88	21
89	21
90	21
91	21
93	22
95	22
99	22
100	22
101	22
102	22
103	23
105	23
107	23
108	23
109	24
110	24
112	24
113	24

114	25
115	25
117	25
116	25
118	26
120	26
122	26
125	26
126	27
127	27
128	27
130	27
132	28
137	28
138	28
139	28
140	29
141	29
143	29
142	29
145	30
147	30
149	30
150	30
151	31
152	31
153	31
155	31
156	32

158	32
159	32
160	32
161	32
162	32
164	33
163	33
165	33
167	33
168	34
170	34
172	34
173	34
175	35
174	35
177	35
176	35
178	36
179	36
180	36
181	36
183	37
185	37
187	37
188	37
189	38
190	38
192	38
193	38

194	39
196	39
200	39
199	39
201	40
202	40
203	40
204	40
205	40
206	40
207	41
210	41
211	41
212	41
214	41
215	41
216	42
217	42
218	42
219	42
222	42
223	42
230	43
231	43
235	43
236	43
237	43
239	43
240	44

242	44
243	44
245	44
246	44
247	44
249	45
250	45
252	45
253	45
255	45
257	45
259	46
260	46
262	46
264	46
265	46
266	46
267	47
268	47
270	47
274	47
275	47
276	47
CONTACTS	48
Contact details	48
Telephones	48
Office hours	48
Address	48

SPECIFICATIONS

Overview

Manta didn't make very many power cats, so when one comes on the market it's time to snatch it up. She's a great coastal cruiser and extremely capable Gulfstream crosser. The current sellers of Blues Cruise are the second owners, and because they had a congenial relationship with the previous (original) owners, they have all sorts of manuals and maintenance information that rarely comes with a boat. You can tell as soon as you step aboard that both of her owners have been fastidious about maintaining her, and she has never been chartered. With her 3 ft draft and bridge clearance able to get as low as 15' by folding down the VHF & AIS antennas and anchor light she can reach many waters others can't. Her hull design is extremely efficient with less drag, so she can produce higher speeds with less horsepower than a mono-hull. And with a low center of gravity and wide beam, she's extremely stable underway.

Basic Information

Category: Motor Yacht

Model Year: 2005

Year Built: 2005

Country: United States

Dimensions

LOA: 44' (13.41mm)

Beam: 21

Speed, Capacities and Weight

Cruise Speed: 15 Knots Kts. (17 MPH) **Max Speed:** 22 Knots Kts. (25 MPH)

Water Capacity: 125 Gallons

Fuel Capacity: 500 Gal Gallons

Accommodations

Total Cabins: 3

Sleeps: 6

Total Heads: 2

Hull and Deck Information

Hull Material: Fiberglass

Engine Information

Engines: 2

Manufacturer: Volvo Penta

Engine Type: Inboard

Fuel Type: Diesel

PHOTOS

01



02



03



04



06



07



08



09



11



12



13



14



18



21



24



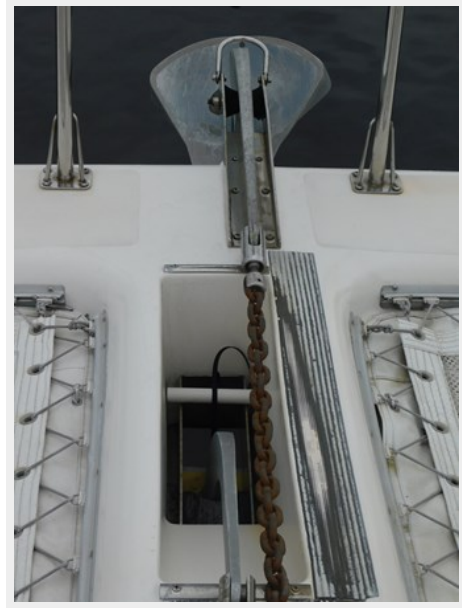
25



27



28



29



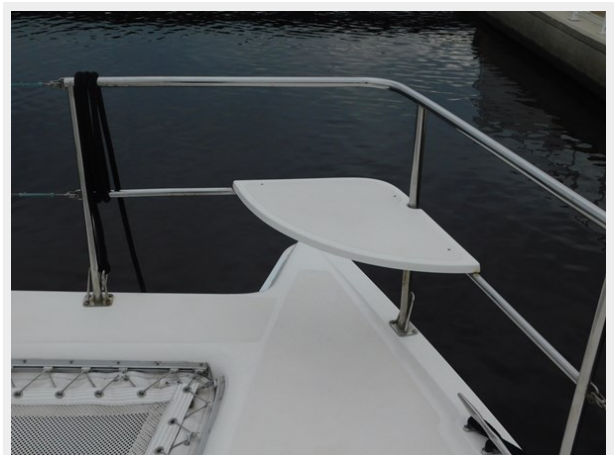
30



31



32



36



37



40



41



43



45



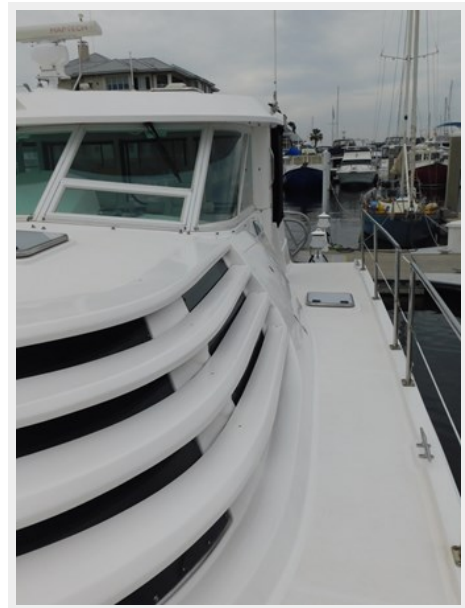
46



47



50



48



51



52



53



54



55



57



59



61



62



63



64



65



66



67



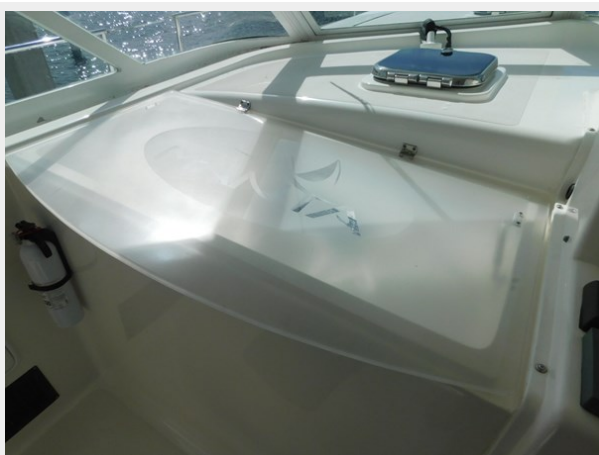
68



69



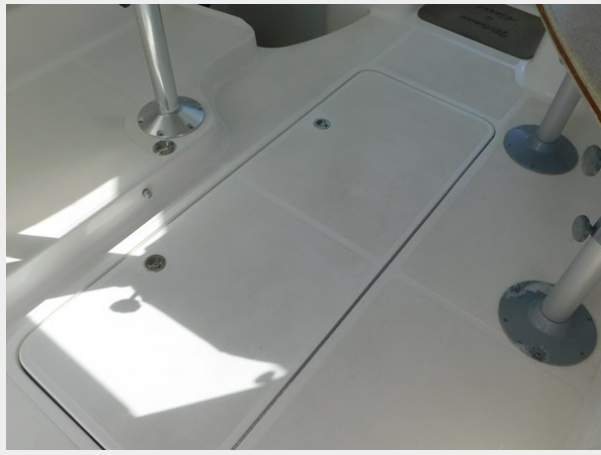
70



72



74



75



76



77



80



81



82



84



88



89



90



91



93



95



99



100



101



102



103



105



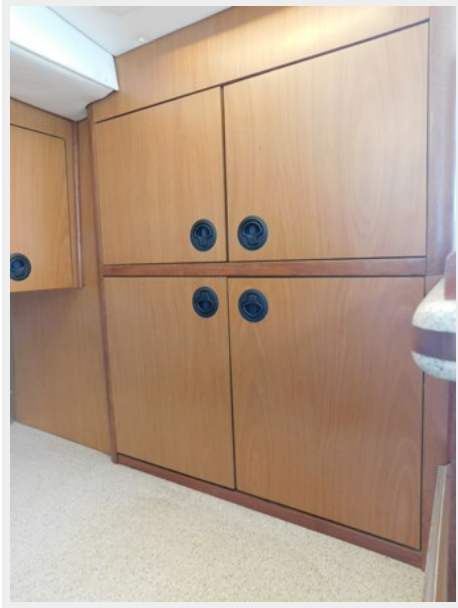
107



108



109



110



112



113



114



115



117



116



118



120



122



125



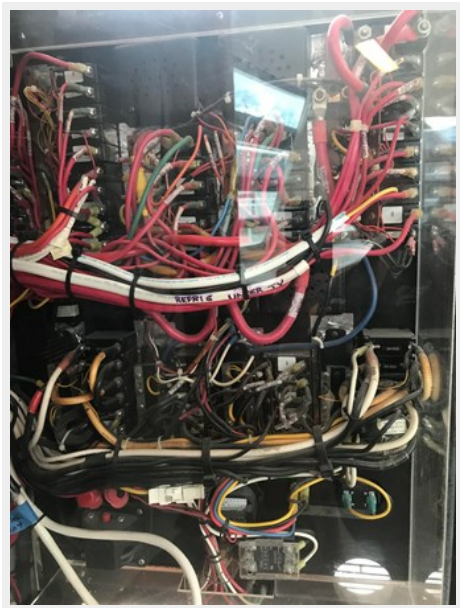
126



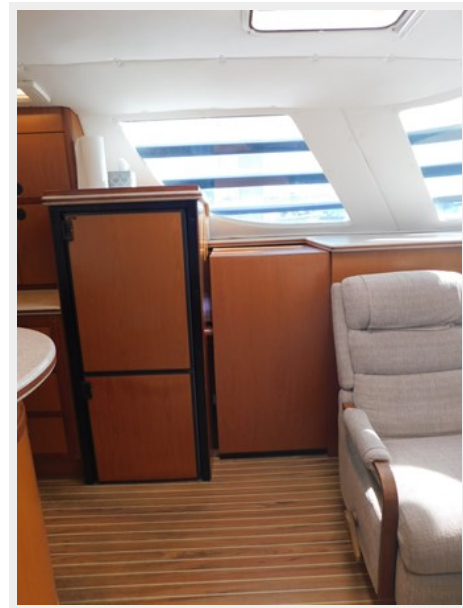
127



128



130



132



137



138



139



140



141



143



142



145



147



149



150



151



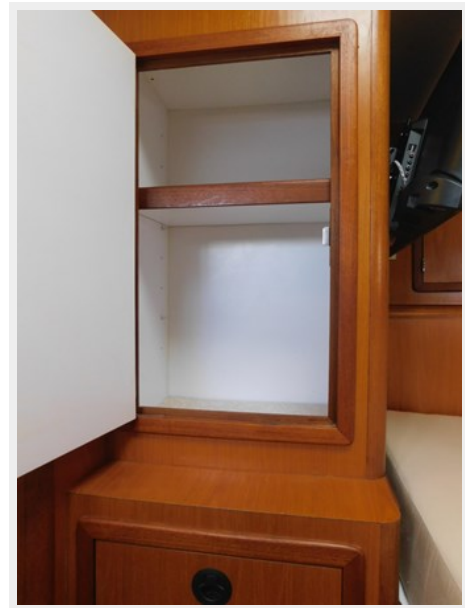
152



153



155



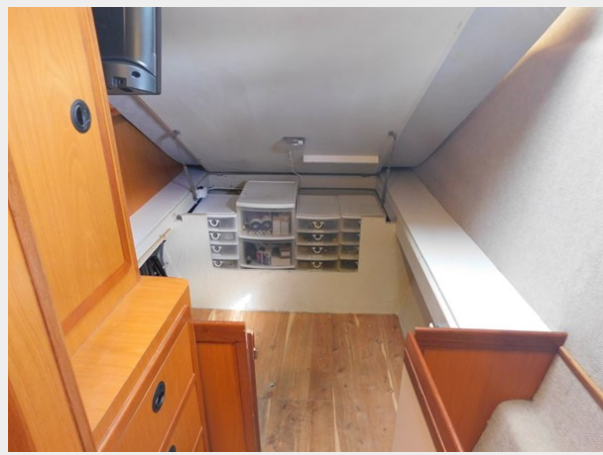
156



158



159



160



161



162



163



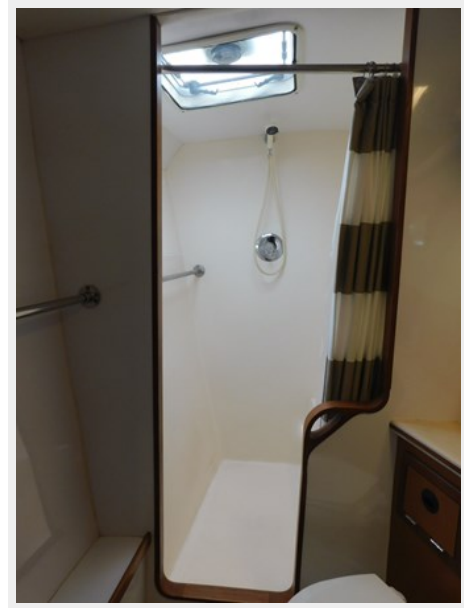
164



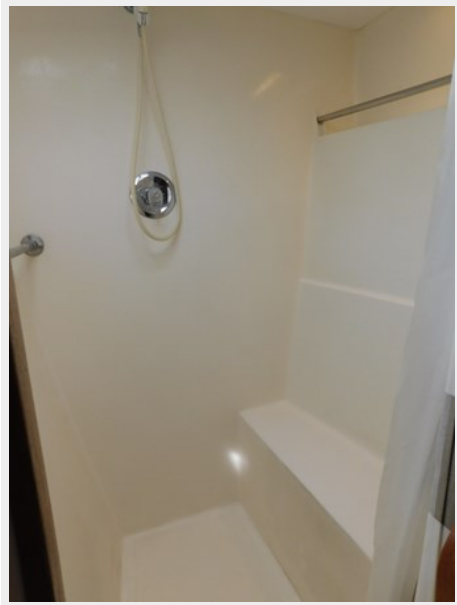
165



167



168



170



172



173



174



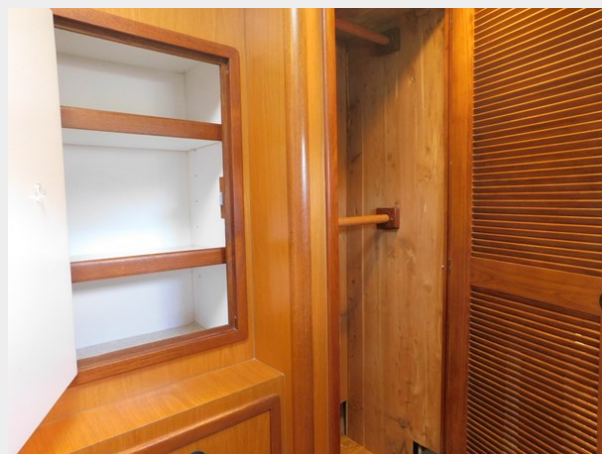
175



177



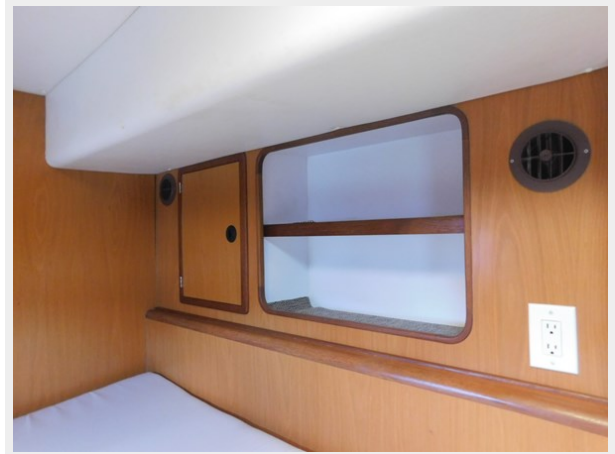
176



178



179



180



181



183



185



187



188



189



190



192



193



194



196



200



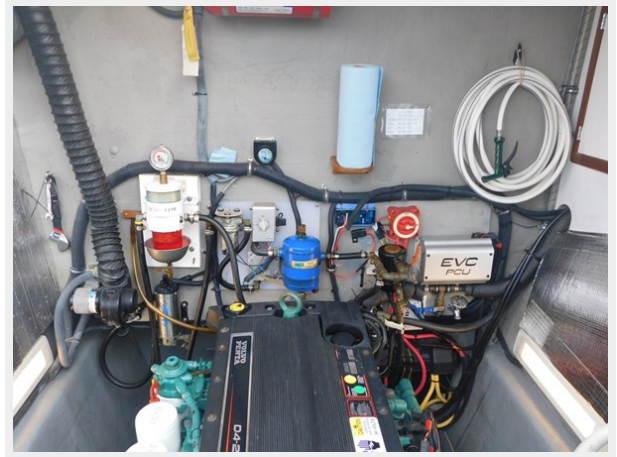
199



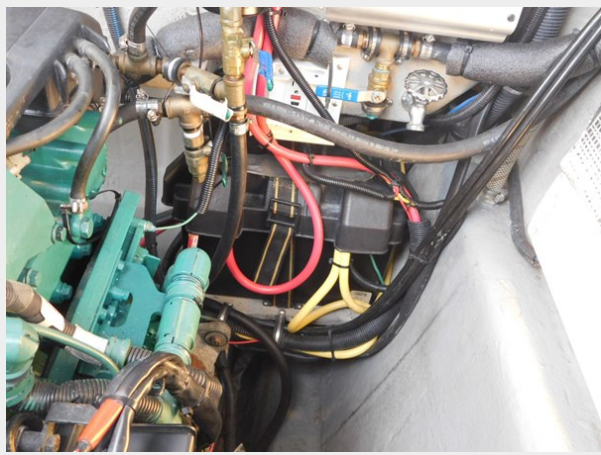
201



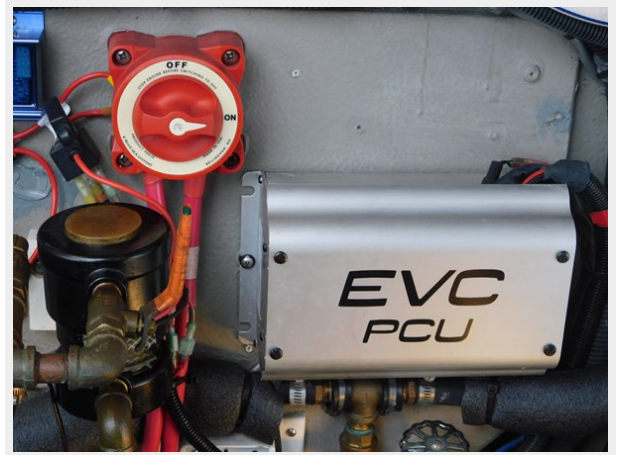
202



203



204



205



206



207



210



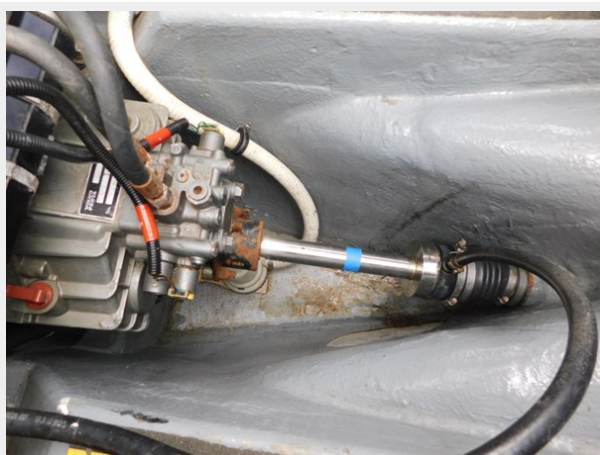
211



212



214



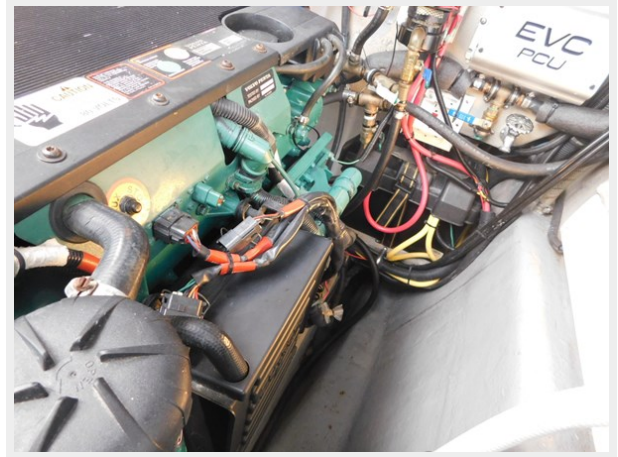
215



216



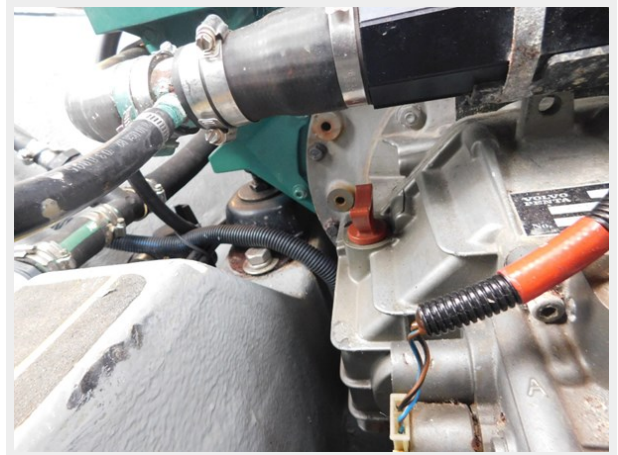
217



218



219



222



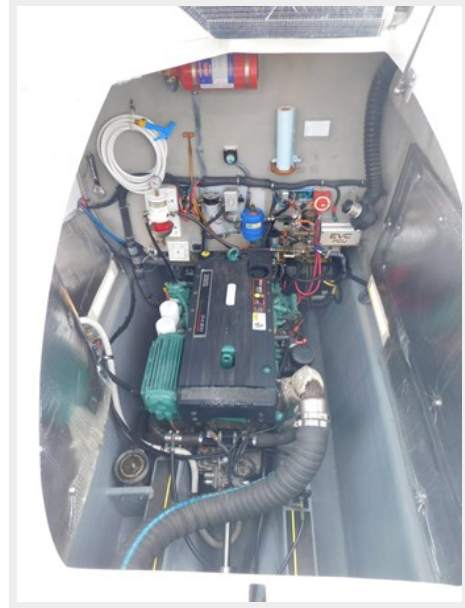
223



230



231



235



236



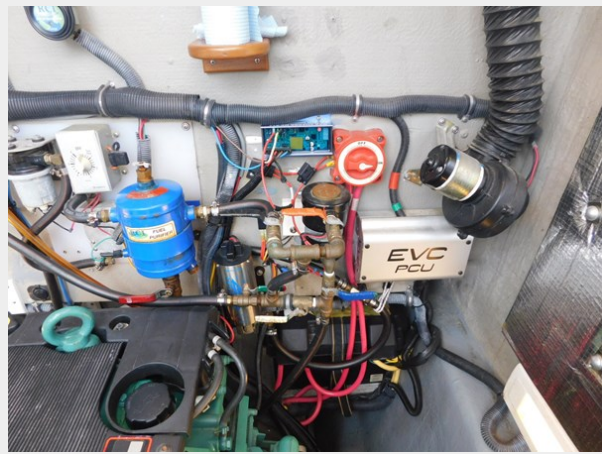
237



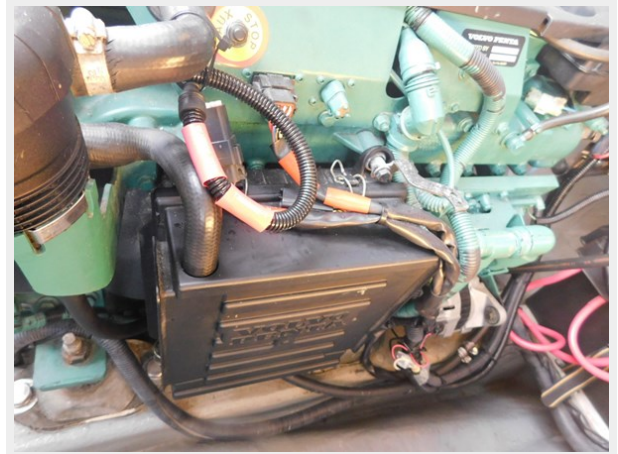
239



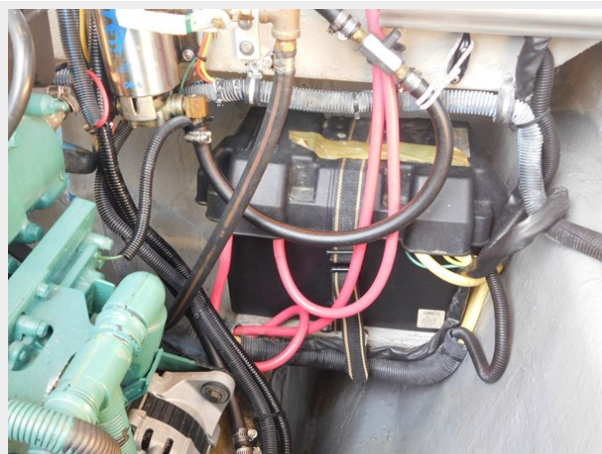
240



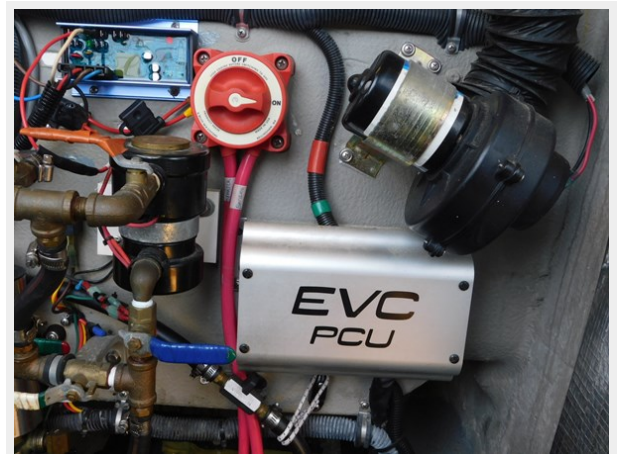
242



243



245



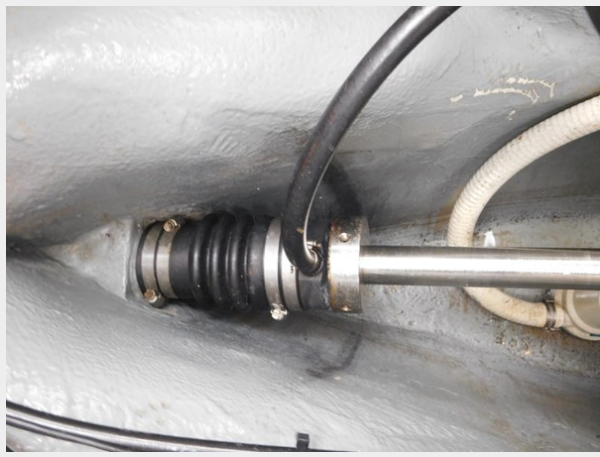
246



247



249



250



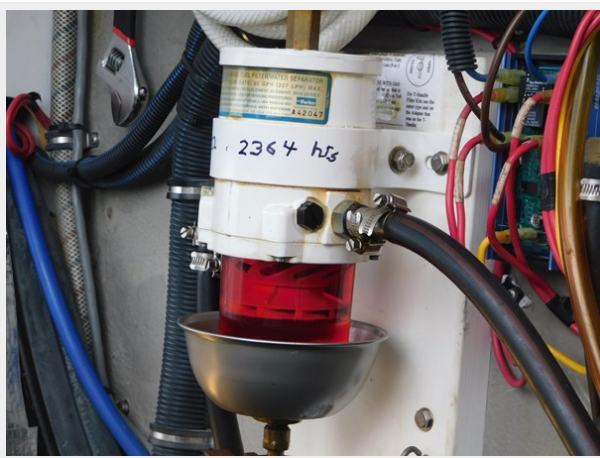
252



253



255



257



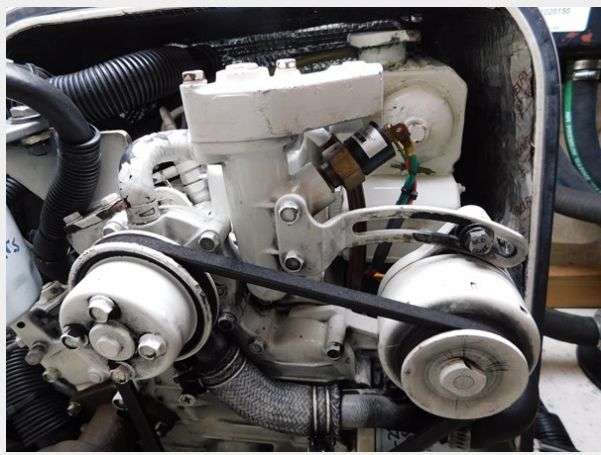
259



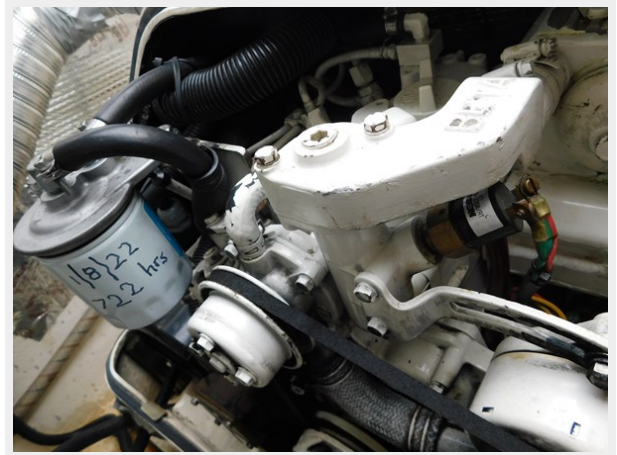
260



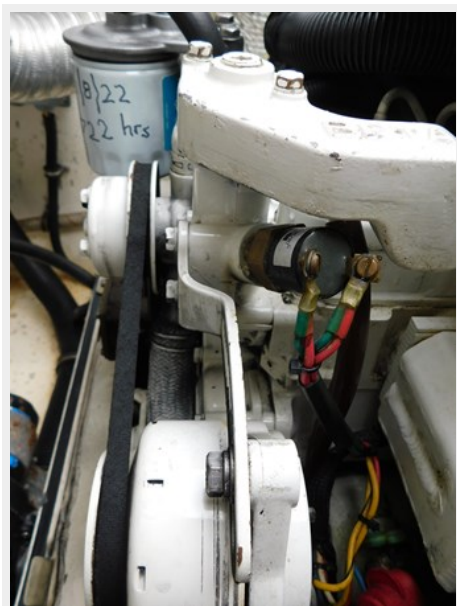
262



264



265



266



267



268



270



274



275



276



CONTACTS

Andrey Shestakov, leading yacht broker of the sales department of Shestakov Yacht Sales Inc. Shestakov Yacht Sales Inc., the official representative of the Miami/Fort Lauderdale FL headquarters.

Contact details

Email: **andrey@shestakovyachtsales.com**

Web: shestakovyachtsales.com/en/

Telephones

USA: **+1(954)274-4435**

Office hours

Monday – Saturday: **9:00 - 21:00** EDT

Sunday: **closed**

Address



Harbour Towne Marina, 850 NE 3rd St, STE 213, Dania, FL 33004