

2016 PRESTIGE 550 FLY — PRESTIGE



Builder: PRESTIGE

LOA: 55' (16.76m)

Year Built: 2016

Model: Motor Yacht

Price: PRICE ON APPLICATION

Location: United States

Our experienced yacht broker, Andrey Shestakov, will help you choose and buy a yacht that best suits your needs 2016 Prestige 550 Fly — PRESTIGE from our catalogue. Presently, at Shestakov Yacht Sales Inc., we have a wide variety of yachts available on our sale's list. We also work in close contact with all the big yacht manufacturers from all over the world.

If you would like to buy a yacht 2016 Prestige 550 Fly — PRESTIGE or would like help answering any questions concerning purchasing, selling or chartering a yacht, please call +1(954)274-4435

TABLE OF CONTENTS

TABLE OF CONTENTS	2
SPECIFICATIONS	6
Overview	6
Basic Information	6
Dimensions	6
Accommodations	6
Hull and Deck Information	6
Engine Information	6
PHOTOS	7
Salon 2 (8)	7
Salon 2 (7)	7
Salon 2 (6)	7
Salon 2 (5)	7
Salon 2 (3)	8
Salon 2 (4)	8
Salon 2 (1)	8
Salon 2 (2)	8
Salon (8)	9
Salon (7)	9
Salon (6)	9
Salon (5)	9
Salon (4)	9
Salon (3)	9
Salon (2)	10
Salon (1)	10
Lower Deck (15)	10
Lower Deck (14)	10
Lower Deck (13)	11

Lower Deck (12)	11
Lower Deck (11)	11
Lower Deck (10)	11
Lower Deck (9)	12
Lower Deck (8)	12
Lower Deck (7)	12
Lower Deck (6)	12
Lower Deck (5)	12
Lower Deck (4)	12
Lower Deck (3)	13
Lower Deck (2)	13
Lower Deck (1)	13
IMG_0689	13
IMG_0688	14
IMG_0687	14
IMG_0686	14
IMG_0685	14
IMG_0684	14
IMG_0683	14
IMG_0682	15
IMG_0681	15
IMG_0662	15
IMG_0668	15
IMG_0661	16
IMG_0660	16
IMG_0659	16
IMG_0658	16
IMG_0657	17
IMG_0656	17

IMG_0655	17
IMG_0654	17
Engine (15)	18
IMG_0638	18
Engine (13)	18
Engine (14)	18
Engine (12)	19
Engine (11)	19
Engine (9)	19
Engine (10)	19
Engine (8)	19
Engine (7)	19
Engine (6)	20
Engine (5)	20
Engine (4)	20
Engine (3)	20
Engine (1)	20
Engine (2)	20
Electronics (23)	21
Electronics (22)	21
Electronics (21)	21
Electronics (20)	21
Electronics (19)	21
Electronics (18)	21
Electronics (17)	22
Electronics (16)	22
Electronics (15)	22
Electronics (14)	22
Electronics (13)	22

Electronics (12)	22
Electronics (10)	23
Electronics (11)	23
Electronics (9)	23
Electronics (8)	23
Electronics (7)	24
Electronics (6)	24
Electronics (5)	24
Electronics (4)	24
Electronics (2)	24
Electronics (3)	24
Electronics (1)	25
CONTACTS	26
Contact details	26
Telephones	26
Office hours	26
Address	26

SPECIFICATIONS

Overview

N/A

Basic Information

Category: Motor Yacht

Sub Category: Flybridge

Model Year: 2016

Year Built: 2016

Country: United States

Dimensions

LOA: 55' (16.76mm)

Accommodations

Total Cabins: 3

Hull and Deck Information

Hull Material: Fiberglass

Engine Information

Engines: 2

Manufacturer: Cummings

PHOTOS

Salon 2 (8)



Salon 2 (7)



Salon 2 (6)



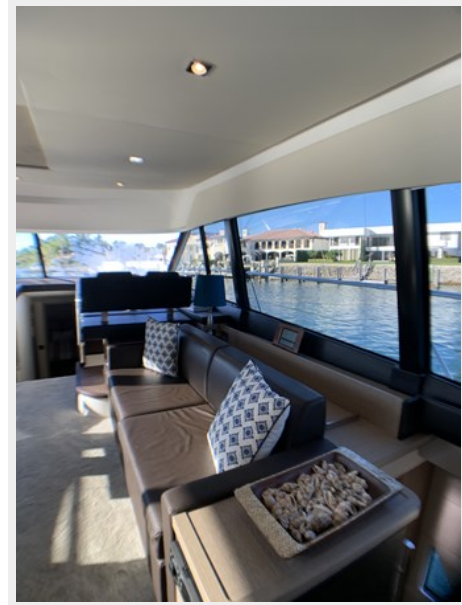
Salon 2 (5)



Salon 2 (4)



Salon 2 (3)



Salon 2 (1)



Salon 2 (2)



Salon (8)



Salon (7)



Salon (6)



Salon (5)



Salon (4)



Salon (3)



Salon (2)



Salon (1)



Lower Deck (15)



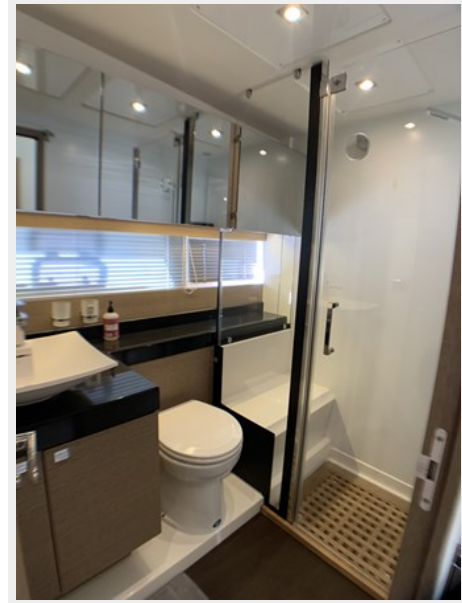
Lower Deck (14)



Lower Deck (13)



Lower Deck (12)



Lower Deck (11)



Lower Deck (10)



Lower Deck (9)



Lower Deck (8)



Lower Deck (7)



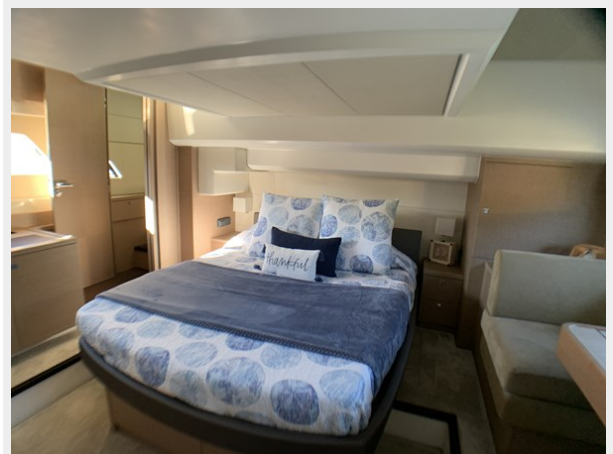
Lower Deck (6)



Lower Deck (5)



Lower Deck (4)



Lower Deck (3)



Lower Deck (2)



Lower Deck (1)



IMG_0689



IMG_0688



IMG_0687



IMG_0686



IMG_0685



IMG_0684



IMG_0683



IMG_0682



IMG_0681



IMG_0662



IMG_0668



IMG_0661



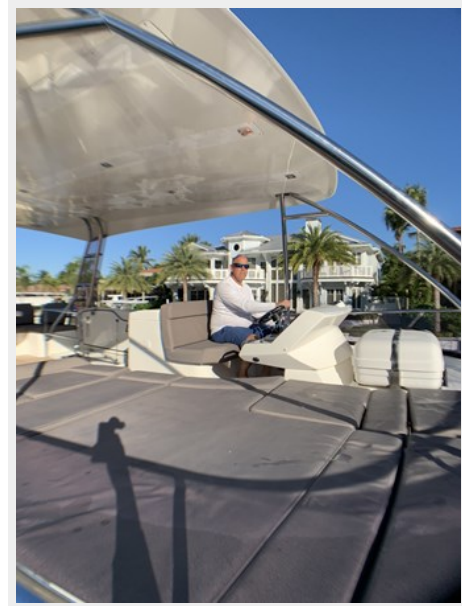
IMG_0660



IMG_0659



IMG_0658



IMG_0657



IMG_0656



IMG_0655



IMG_0654



IMG_0638



Engine (15)



Engine (14)



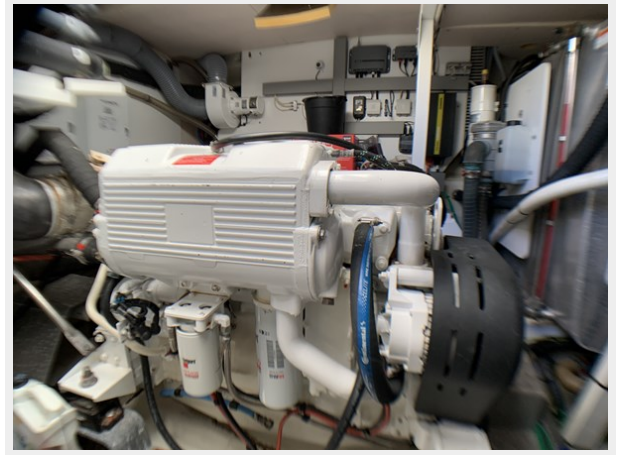
Engine (13)



Engine (12)



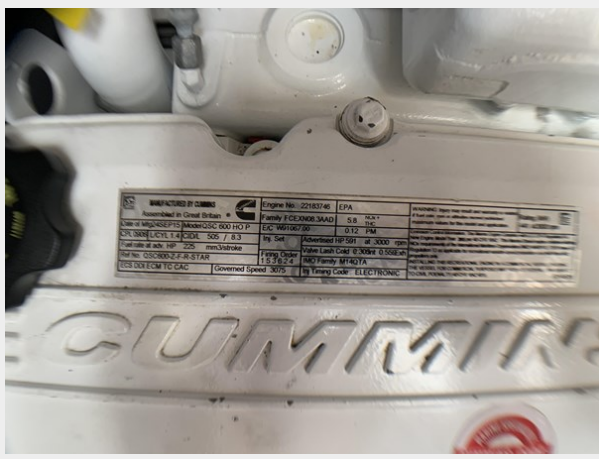
Engine (11)



Engine (9)



Engine (10)



MANUFACTURED BY GUMMINS	Engine No. 22183746	EPA	
Recommended Oil: Shell Rotella	Factory P/O: 08/20/10 MAAD	5.9	100%
USE OR MAINTENANCE INFORMATION: 600-183 P	EPC: 08/20/10	0.132	100%
CYL. NAME: L CYL. 1-4 R CYL. 5-6 / 7-8-3	Oil Set	Advertised HP: 501	At: 3000 rpm
Control: 8-wire, 100% mechanical	Factory Color: 1-5 2-3 4-4	Actual Load: 0.300hr @ 0.500hr	100% Factory 08/20/10
Part No.: G536002-F-R-5-STAR	Governed Speed: 3075	By: Factory Code: ELECTRONIC	
US EPA ECM TC-CAC			

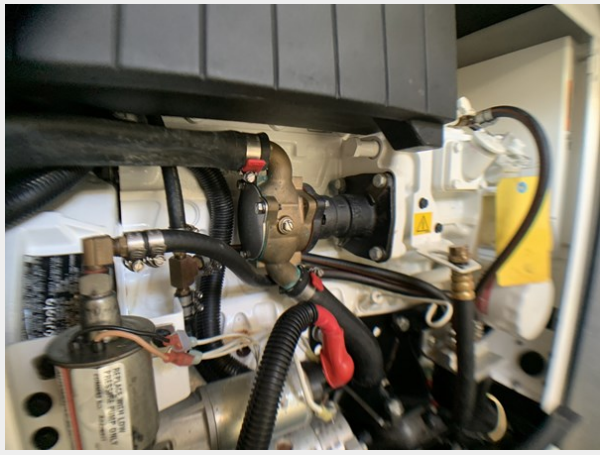
Engine (7)



Engine (8)



Engine (6)



Engine (5)



Engine (4)



Engine (3)



Engine (1)



Engine (2)



Electronics (23)



Electronics (22)



Electronics (21)



Electronics (20)



Electronics (19)



Electronics (18)



Electronics (17)



Electronics (16)



Electronics (15)



Electronics (14)



Electronics (13)



Electronics (12)



Electronics (11)



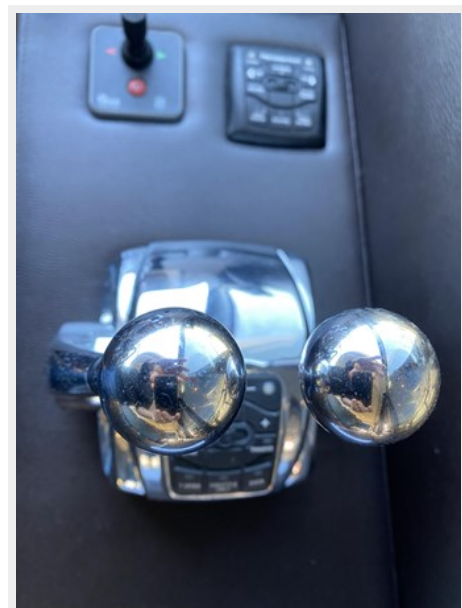
Electronics (10)



Electronics (9)



Electronics (8)



Electronics (7)



Electronics (6)



Electronics (5)



Electronics (4)



Electronics (2)

Electronics (3)



Electronics (1)



CONTACTS

Andrey Shestakov, leading yacht broker of the sales department of Shestakov Yacht Sales Inc. Shestakov Yacht Sales Inc., the official representative of the Miami/Fort Lauderdale FL headquarters.

Contact details

Email: andrey@shestakovyachtsales.com

Web: shestakovyachtsales.com/en/

Telephones

USA: +1(954)274-4435

Office hours

Monday – Saturday: **9:00 - 21:00** EDT

Sunday: **closed**

Address



Harbour Towne Marina, 850 NE 3rd St,
STE 213, Dania, FL 33004