

SUGAREE — BENETEAU



Builder: BENETEAU

Year Built: 2005

Model: Sloop

Price: PRICE ON APPLICATION

Location: United States

LOA: 32' (9.75mm)

Beam: 10.66

Max Draft: 5' 11" (1.8mm)

Our experienced yacht broker, Andrey Shestakov, will help you choose and buy a yacht that best suits your needs **Sugaree — BENETEAU** from our catalogue. Presently, at Shestakov Yacht Sales Inc., we have a wide variety of yachts available on our sale's list. We also work in close contact with all the big yacht manufacturers from all over the world.

If you would like to buy a yacht **Sugaree — BENETEAU** or would like help answering any questions concerning purchasing, selling or chartering a yacht, please call **+1(954)274-4435**

TABLE OF CONTENTS

TABLE OF CONTENTS	2
SPECIFICATIONS	5
Overview	5
Basic Information	5
Dimensions	5
Speed, Capacities and Weight	5
Accommodations	5
Hull and Deck Information	5
Engine Information	6
PHOTOS	7
8225903_20220223093337405_1_XLARGE	7
8225903_20220223093335592_1_XLARGE	7
8225903_20220223093342990_1_XLARGE	7
8225903_20220223093340263_1_XLARGE	7
8225903_20220223093357159_1_XLARGE	8
8225903_20220223093348241_1_XLARGE	8
8225903_20220223093352411_1_XLARGE	8
8225903_20220223093401273_1_XLARGE	8
8225903_20220223093405387_1_XLARGE	8
8225903_20220223093409549_1_XLARGE	8
8225903_20220223093413676_1_XLARGE	9
8225903_20220223093417627_1_XLARGE	9
8225903_20220223093421528_1_XLARGE	9
8225903_20220223093425325_1_XLARGE	9
8225903_20220223093441470_1_XLARGE	9
8225903_20220223093428643_1_XLARGE	9
8225903_20220223093432688_1_XLARGE	10
8225903_20220223093437623_1_XLARGE	10

8225903_20220223093446550_1_XLARGE	10
8225903_20220223093454616_1_XLARGE	10
8225903_20220223093450443_1_XLARGE	10
8225903_20220223093504909_1_XLARGE	10
8225903_20220223093502654_1_XLARGE	11
8225903_20220223093458262_1_XLARGE	11
8225903_20220223093512667_1_XLARGE	11
8225903_20220223093517926_1_XLARGE	11
8225903_20220223093521598_1_XLARGE	11
8225903_20220223093538904_1_XLARGE	11
8225903_20220223093524656_1_XLARGE	12
8225903_20220223093528724_1_XLARGE	12
8225903_20220223093550873_1_XLARGE	12
8225903_20220223093546902_1_XLARGE	12
8225903_20220223093554796_1_XLARGE	13
8225903_20220223093558010_1_XLARGE	13
8225903_20220223093531874_1_XLARGE	13
8225903_20220223093543009_1_XLARGE	13
8225903_20220223093601981_1_XLARGE	14
8225903_20220223093608834_1_XLARGE	14
8225903_20220223093605890_1_XLARGE	14
8225903_20220223093535874_1_XLARGE	14
8225903_20220223093613025_1_XLARGE	15
8225903_20220223093616130_1_XLARGE	15
8225903_20220223093620256_1_XLARGE	15
8225903_20220223093623186_1_XLARGE	15
8225903_20220223093627468_1_XLARGE	15
8225903_20220223093630701_1_XLARGE	15
8225903_20220223093634691_1_XLARGE	16

CONTACTS	17
Contact details	17
Telephones	17
Office hours	17
Address	17

SPECIFICATIONS

Overview

Beneteau designed a Great mid-sized sailboat. The Beneteau 323 couples good overall performance with a spacious cockpit and living accommodations suitable for four. She has a In Mast Furling main sail and a 120 Furling jib sail for ease of sailing.

Basic Information

Category: Sloop

Model Year: 2005

Year Built: 2005

Country: United States

Dimensions

LOA: 32' (9.75mm)

Beam: 10.66

Max Draft: 5' 11" (1.8mm)

Speed, Capacities and Weight

Water Capacity: 42 Gallons

Holding Tank: 20 Gal Gallons

Fuel Capacity: 17 Gal Gallons

Accommodations

Total Cabins: 2

Hull and Deck Information

Hull Material: Fiberglass

Engine Information

Engines: 1

Manufacturer: Yanmar

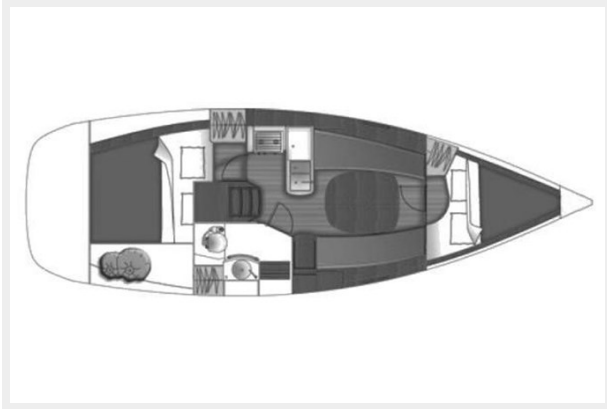
Engine Type: Inboard

Fuel Type: Diesel

PHOTOS

8225903_20220223093337405_1_XLARGE

8225903_20220223093335592_1_XLARGE



8225903_20220223093342990_1_XLARGE



8225903_20220223093340263_1_XLARGE



8225903_20220223093357159_1_XLARGE



8225903_20220223093348241_1_XLARGE



8225903_20220223093352411_1_XLARGE



8225903_20220223093401273_1_XLARGE



8225903_20220223093405387_1_XLARGE



8225903_20220223093409549_1_XLARGE



8225903_20220223093413676_1_XLARGE



8225903_20220223093417627_1_XLARGE



8225903_20220223093421528_1_XLARGE



8225903_20220223093425325_1_XLARGE



8225903_20220223093441470_1_XLARGE



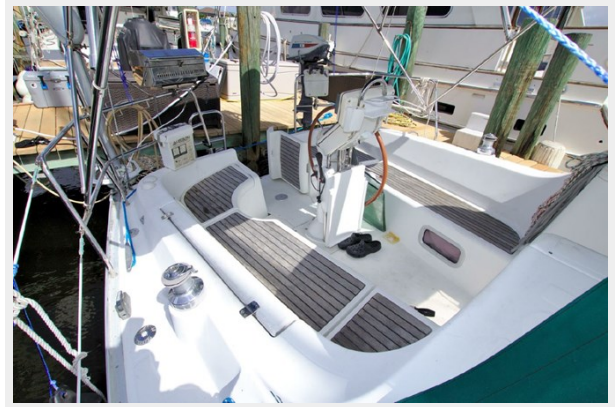
8225903_20220223093428643_1_XLARGE



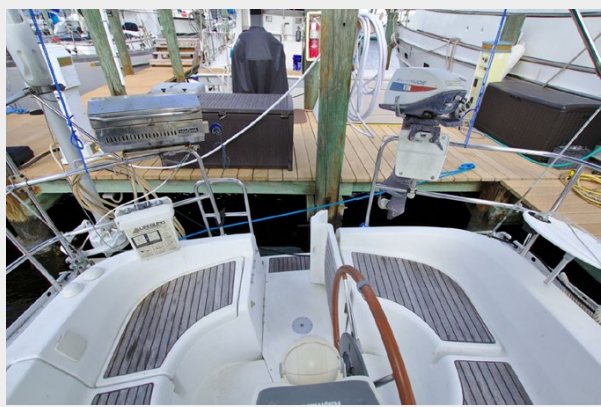
8225903_20220223093432688_1_XLARGE



8225903_20220223093437623_1_XLARGE



8225903_20220223093446550_1_XLARGE



8225903_20220223093454616_1_XLARGE



8225903_20220223093450443_1_XLARGE



8225903_20220223093504909_1_XLARGE



8225903_20220223093502654_1_XLARGE



8225903_20220223093458262_1_XLARGE



8225903_20220223093512667_1_XLARGE



8225903_20220223093517926_1_XLARGE



8225903_20220223093521598_1_XLARGE



8225903_20220223093538904_1_XLARGE



8225903_20220223093524656_1_XLARGE



8225903_20220223093528724_1_XLARGE

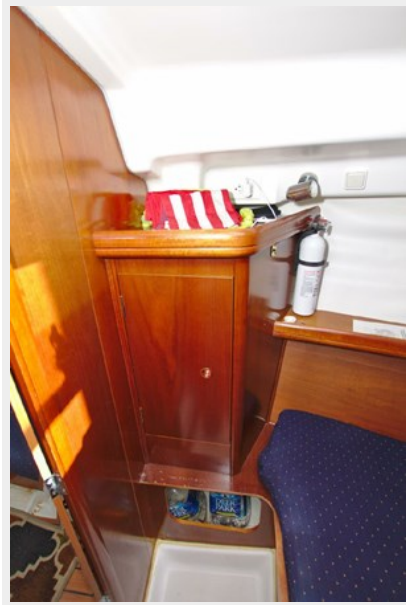


8225903_20220223093550873_1_XLARGE

8225903_20220223093546902_1_XLARGE



8225903_20220223093554796_1_XLARGE



8225903_20220223093558010_1_XLARGE



8225903_20220223093531874_1_XLARGE



8225903_20220223093543009_1_XLARGE



8225903_20220223093601981_1_XLARGE



8225903_20220223093608834_1_XLARGE



8225903_20220223093605890_1_XLARGE



8225903_20220223093535874_1_XLARGE



8225903_20220223093613025_1_XLARGE



8225903_20220223093616130_1_XLARGE



8225903_20220223093620256_1_XLARGE



8225903_20220223093623186_1_XLARGE



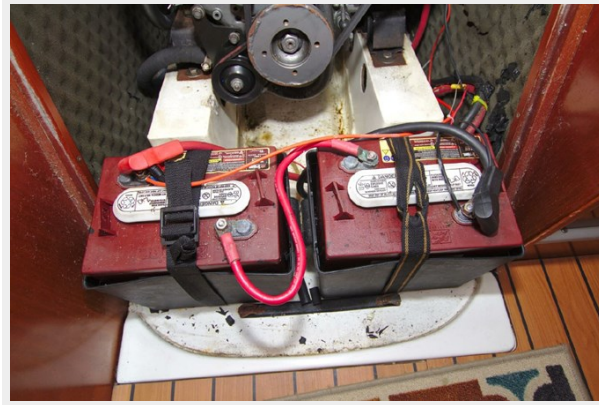
8225903_20220223093627468_1_XLARGE



8225903_20220223093630701_1_XLARGE



8225903_20220223093634691_1_XLARGE



CONTACTS

Andrey Shestakov, leading yacht broker of the sales department of Shestakov Yacht Sales Inc. Shestakov Yacht Sales Inc., the official representative of the Miami/Fort Lauderdale FL headquarters.

Contact details

Email: andrey@shestakovyachtsales.com

Web: shestakovyachtsales.com/en/

Telephones

USA: +1(954)274-4435

Office hours

Monday – Saturday: **9:00 - 21:00** EDT

Sunday: **closed**

Address



Harbour Towne Marina, 850 NE 3rd St,
STE 213, Dania, FL 33004