

SERENITY NOW — SUNSEEKER



Builder: SUNSEEKER

Year Built: 2008

Model: Cruising Yacht

Price: PRICE ON APPLICATION

Location: United States

LOA: 62' (18.9mm)

Beam: 16.41

Max Draft: 5' 1" (1.55mm)

Our experienced yacht broker, Andrey Shestakov, will help you choose and buy a yacht that best suits your needs **Serenity Now — SUNSEEKER** from our catalogue. Presently, at Shestakov Yacht Sales Inc., we have a wide variety of yachts available on our sale's list. We also work in close contact with all the big yacht manufacturers from all over the world.

If you would like to buy a yacht **Serenity Now — SUNSEEKER** or would like help answering any questions concerning purchasing, selling or chartering a yacht, please call **+1(954)274-4435**

TABLE OF CONTENTS

TABLE OF CONTENTS	2
SPECIFICATIONS	5
Overview	5
Basic Information	8
Dimensions	9
Speed, Capacities and Weight	9
Accommodations	9
Hull and Deck Information	9
Engine Information	9
PHOTOS	10
DJI_0028	10
DJI_0055-Edit	10
DJI_0015	10
DJI_0057-Edit	10
DJI_0021	10
DJI_0048	10
DJI_0053	11
DJI_0036	11
DJI_0012	11
DSC_9140	11
DSC_9162	11
DSC_9166	11
DSC_9170-Edit	12
DSC_9704-Edit	12
DSC_9706	12
DSC_9689	12
DSC_9043	12
DSC_9068-Edit	12

DSC_9082	13
DSC_9039	13
DSC_9086-Edit	13
DSC_9117	13
DSC_9685	13
DSC_9677	13
DSC_9633	14
DSC_9647	14
DSC_9666	14
DSC_9656-Edit	14
DSC_9608	14
DSC_9661	14
DSC_9600	15
DSC_9602	15
DSC_9598-Edit	15
DSC_9592	15
DSC_9579-Edit	15
DSC_9788	15
DSC_9779	16
DSC_9782	16
DSC_9533-Edit	16
DSC_9488	16
DSC_9511-Edit	16
DSC_9180-Edit	16
DSC_9274	17
DSC_9276-Edit	17
DSC_9264-Edit	17
DSC_9294-Edit	17
DSC_9317	17

DSC_9314-Edit	17
DSC_9340-Edit-Edit	18
DSC_9360	18
DSC_9396-Edit	18
DSC_9422	18
DSC_9427	18
DSC_9438-Edit	18
DSC_9450-Edit	19
DSC_9458-Edit	19
DSC_9463-Edit	19
DSC_9743-Edit	19
DSC_9757-Edit	19
DSC_9754	19
DSC_9712	20
DSC_9739	20
DSC_9726	20
DSC_9723	20
DSC_9737	20
CONTACTS	21
Contact details	21
Telephones	21
Office hours	21
Address	21

SPECIFICATIONS

Overview

With an extensive refit (2021) and constant upgrades, this captain maintained Sunseeker 62 Predator is ready for immediate delivery! Without question, this is the finest example of not only a 62 Predator, but any similar sized express yacht of the same era.

****Reduced 50K for immediate sale and delivery****

Sunseeker's **Predator** collection is renowned for having the *most aggressively styled* express yachts anywhere on the water. The Predator's **edgy lines** can only be equaled in one respect, **the boats ride**. With a **deep V** built to take on the English Channel, Sunseeker's roots of speed, and **high-performance running gear**, the boat handles more like a *sport boat than a yacht*. **Deep prop pockets** provide the perfect running attitude, creating a **comfortable ride** at any speed. Putting the boat into a hard turn will make anyone appreciate **Sunseekers engineering**.

Both *cosmetically and mechanically*, this is not only **the finest example of a 62 Predator on the market** today, but it's also the **best example** of *any* express yacht this size and age. Below is a list of **notable features and upgrades** that will make that point clear.

Upgrades and Notable Features:

- **Interior refit – cockpit, salon, helm, galley, and lower salon (2021)**
 - **Lexan dash panel** for electronics and analog gauges at helm
 - **Vinyl headliner** throughout salon, helm, galley, and lower salon
 - **Overhead, dimmable LED lighting** in cockpit, salon, galley, lower salon, and master stateroom
 - **Sanded salon hardwood floor**
 - **Sanded teak decks**
 - Vinyl wall panels in salon
 - **Folding, high-low salon table** in **black, matte finish**
 - **High-Low table** in lower salon in **black, matte finish**
 - **Grey wrapped wall accent panels** in lower salon and galley
 - **Brushed stainless steel backsplash** in galley with overhead LED lighting
 - **Painted grey threshold** for salon step
 - **Custom port side cabinetry in salon:**
 - **50" high-low TV**
 - **Concealed soundbar**
 - Drawers (3x)
 - Large cabinet storage (5x)
 - **NuriChef Wine cooler**
 - **Black Corian countertop** with molded guard

- **AV/Server rack**
- Wire conduits for WiFi router and electronics
- Outlet
- **KVH HD7 for true 1080p picture and matching dummy dome (2021)**
- **All new smart TVs (2021)**
- **Electric SureShade cockpit sunshade (2021)**
- **New Vitrigrio cockpit refrigerator (2021)**
- **New Gaganeau cockpit grill (2021)**
- **New exterior sound system (2018)**
 - 4x JL cockpit 6.6" speakers
 - 2x JL rail-mounted speakers on bow for sunpad (2021)
 - JL Amp
 - JL Subwoofer
 - Fusion MSRA70 head unit (2021)
- **Engine Work (2020):**
 - New belts and valve cover gaskets
 - Cleaned and rebuilt transmission coolers
 - Cleaned heat exchanger bundles
- **Newer Kohler genset**
- **New windlass and motor (2020)**
- **2018 AB 330 jet tender with 100HP Rotax Motor, Garmin 741, transducer, and sound system**
- All waste system **duckbill valves replaced (2022)**
- New **windshield shade (2021)**
- Air conditioning **manifold system rebuilt (2021)**
- **All exterior cushions redone in Ferrari Silver to match hull (2018)**
- Exterior covers in Silver to match seating and hull (2018)
- **New teak decks (2018)**
- **New interior hardwood flooring in salon and galley (2018)**
- Hull painted in **metallic silver (2015)**
- **Electronics**
 - Garmin 8012 Chart Plotters – 2x (2015)
 - Garmin GHS 10 VHF (2015)
 - Garmin 4' 48kW Open Array Radar (2015)
 - Garmin GMI 20 Instrument Display (2015)
 - Simrad AP25 Autopilot
 - Sanshin HR – 1012 search light with helm controls
- New starboard side pull-out swim ladder (2022)
- **Hydraulic swim platform**
- **Toy garage**
- Side Power **bow thruster**
- Side Power **stern thruster**
- **Cockpit wet bar** with sink, grill, refrigerator, and cool box

The boat boasts **extensive exterior seating** and areas to congregate. The teak-decked, **hydraulic swim platform** can quickly deploy a tender and provide a submerged deck when deployed and swimming. The entire transom of the boat **lifts to reveal a garage**, perfect for storing fenders, lines, water toys, bicycles, scooters, etc. It is an *incredible* amount of storage with *effortless* access. All cables, hookups, and battery switches are easily controlled from the platform and cockpit steps.

L-shaped cockpit seating are flanked by a cockpit wet bar complete with an electric grill, refrigerator, sink, and cool box. The grey upholstery with white accent was all redone in **Ferrari Silver, with grey vinyl covers to match**. Easily, the forward-facing backrests fold forward to create a **full-size European sun pad** in the cockpit, **protected by a low-profile grab rail**. The **high-low, teak high gloss table** is plenty large for **outdoor dining**, but also folds back on itself to provide more walking space and reveal cup holders. When the sun gets too strong, an **electric sunshade is mounted on top of the hardtop and will retract enough to cover the entire L-shaped sofa**.

All **salon glass doors slide to the starboard side** to create a open, flowing feel from the cockpit to the salon. Gorgeous, **recently installed (2018) and sanded (2021) hardwood floors** in the salon are warm and inviting. A **salon sofa** to the portside is capable of seating a small crowd around the **brand-new salon table. With folding leaves, the table expands to almost twice its original size to provide enough room for six to dine**. Recently refinished in black matte, it can also spin and drop down to coffee table height when it's time to watch television. *Beautiful* custom white cabinetry flanks the entire port side of the salon. **Custom designed for maximum storage, counter space, and a concealed high-low TV and soundbar, the cabinetry makes the salon feel considerably newer than 2008**.

Any captain will appreciate **the updated electronics at the helm**. Two Garmin 12" **8012 chart plotters**, Garmin **xHD2 4' radar**, and a **Garmin GMI 20 Instrument Display** were all installed in 2015. Coupled with the **Simrad autopilot and spotlight**, the captain has all the desired equipment at his or her fingertips.

The galley features **rich high-gloss cherry cabinetry**. All the cabinetry shows like new and has **no milking or glossing in any of the panels**. A newer **Isotherm standup refrigerator and freezer** is recessed into the aft bulkhead of the galley. A custom, **brand new brushed stainless steel galley backsplash** create a galley that is much more modern than 2008. All overhead lights were changed to **dimnable LEDs** which compliment the **atrium style ceiling** for the galley and flood the area with **natural and electric lighting**.

To the starboard side is the lower salon with dining table. The **high-low table for the lower salon sofa is also finished in black matte to create a more modern feel**. A **smart TV is on an articulating mount** across from the sofa, a great feature when looking for a bit more privacy.

The boat boasts a **large, full-beam aft master stateroom**. A **combination washer/dryer** sits right outside the door to the stateroom making laundry easy and close to guests and owners. To the starboard side of the stateroom, a large, **double-wide closet with mirrored doors provides**

plenty of wardrobe storage. A chest of drawers and cabinets also on the starboard side compliment the large closet to neatly have everything stowed in no time at all after getting onboard. **A large smart TV is anchored behind the vanity/desk on the starboard side as well.** A leather stool pulls out on a stainless-steel arm to make the area a perfect location to either **get ready for the evening or work remotely in today's age.** Large **hull side windows** on either side flood the stateroom with light when desired. The **aft porthole on each side also open to allow for cross ventilation.**

The **master head** is to the port side of the stateroom. Featuring a popular circular shower design, the **floorplan of the head is much larger than most when not showering.** The doors slide and stow which allow the floor of the shower to be utilized and accessed by those at the sink and toilet. **This greatly cuts down on wasted space in the head.** A **vessel style sink, mirrored medicine cabinet, outlets, towel racks, and glass holder** give the owner all the usual comforts to keep their stay onboard comfortable.

Just forward of the master stateroom, on the starboard side, is the **guest stateroom.** Featuring large, stacked bunks, the stateroom is **not** just a bonus or "storage" room. It also features a **large closet** and **Smart TV** mounted on another **articulating wall mount.** An **opening porthole** also provides a view and fresh air when desired.

The **VIP stateroom is forward.** With plenty of **rich cabinetry** providing storage above and below the bed, the room is a **great example of Sunseekers spectacular cabinetry.** A **large hanging closet** on the starboard side, coupled with **lots of storage,** makes an occupant feel comfortable and allows guests to travel with everything they need. The **port-side day head** is accessed either from the lower salon or ensuite access from the VIP stateroom.

This boat is located offsite in Palm Beach Gardens, Florida. Please call the listing broker to schedule a showing. Nobody will be disappointed after being onboard. **This boat presents exactly as it photographed.**

Basic Information

Category: Cruising Yacht

Sub Category: Express

Model Year: 2008

Year Built: 2008

Country: United States

Dimensions

LOA: 62' (18.9mm)**LWL:** 48' 2" (14.68mm)**Beam:** 16.41**Max Draft:** 5' 1" (1.55mm)

Speed, Capacities and Weight

Water Capacity: 185 Gallons**Fuel Capacity:** 792 Gal Gallons

Accommodations

Total Cabins: 3**Total Berths:** 4**Sleeps:** 6**Total Heads:** 2

Hull and Deck Information

Hull Material: Fiberglass**Deck Material:** Fiberglass**Hull Configuration:** Deep Vee**Hull Color:** Silver

Engine Information

Engines: 2**Manufacturer:** MAN**Engine Type:** Inboard**Fuel Type:** Diesel

PHOTOS

DJI_0028



DJI_0055-Edit



DJI_0015



DJI_0057-Edit



DJI_0021



DJI_0048



DJI_0053



DJI_0036



DJI_0012



DSC_9140



DSC_9162



DSC_9166



DSC_9170-Edit



DSC_9704-Edit



DSC_9706



DSC_9689



DSC_9043



DSC_9068-Edit



DSC_9082



DSC_9039



DSC_9086-Edit



DSC_9117



DSC_9685



DSC_9677



DSC_9633



DSC_9647



DSC_9666



DSC_9656-Edit



DSC_9608



DSC_9661



DSC_9600



DSC_9602



DSC_9598-Edit



DSC_9592



DSC_9579-Edit



DSC_9788



DSC_9779



DSC_9782



DSC_9533-Edit



DSC_9488



DSC_9511-Edit



DSC_9180-Edit



DSC_9274



DSC_9276-Edit



DSC_9264-Edit



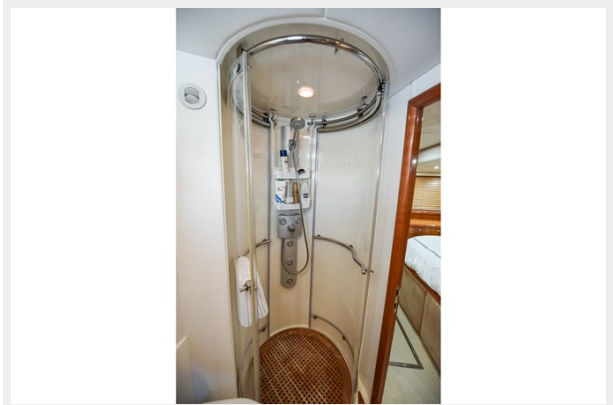
DSC_9294-Edit



DSC_9317



DSC_9314-Edit



DSC_9340-Edit-Edit



DSC_9360



DSC_9396-Edit



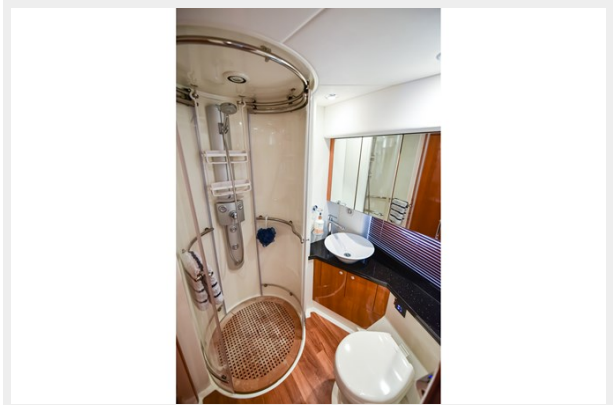
DSC_9422



DSC_9427



DSC_9438-Edit



DSC_9450-Edit



DSC_9458-Edit



DSC_9463-Edit



DSC_9743-Edit



DSC_9757-Edit



DSC_9754



DSC_9712



DSC_9739



DSC_9726



DSC_9723



DSC_9737



CONTACTS

Andrey Shestakov, leading yacht broker of the sales department of Shestakov Yacht Sales Inc. Shestakov Yacht Sales Inc., the official representative of the Miami/Fort Lauderdale FL headquarters.

Contact details

Email: andrey@shestakovyachtsales.com

Web: shestakovyachtsales.com/en/

Telephones

USA: +1(954)274-4435

Office hours

Monday – Saturday: **9:00 - 21:00** EDT

Sunday: **closed**

Address



Harbour Towne Marina, 850 NE 3rd St,
STE 213, Dania, FL 33004