

ONTRAC — MIDNIGHT EXPRESS POWERBOATS



Builder:

MIDNIGHT EXPRESS POWERBOATS

Year Built: 2000

Model: Boats

Price: PRICE ON APPLICATION

Location: United States

LOA: 39' 2" (11.94mm)

Beam: 9.5

Min Draft: 1' 11" (0.58mm)

Max Draft: 2' (0.61mm)

Cruise Speed: 34.76 Knots Kts. (40 MPH)

Max Speed: 50.4 Knots Kts. (58 MPH)

Our experienced yacht broker, Andrey Shestakov, will help you choose and buy a yacht that best suits your needs **ONTRAC — MIDNIGHT EXPRESS POWERBOATS** from our catalogue. Presently, at Shestakov Yacht Sales Inc., we have a wide variety of yachts available on our sale's list. We also work in close contact with all the big yacht manufacturers from all over the world.

If you would like to buy a yacht **ONTRAC — MIDNIGHT EXPRESS POWERBOATS** or would like help answering any questions concerning purchasing, selling or chartering a yacht, please call **+1(954)274-4435**

TABLE OF CONTENTS

TABLE OF CONTENTS	2
SPECIFICATIONS	4
Overview	4
Basic Information	5
Dimensions	5
Speed, Capacities and Weight	5
Accommodations	5
Hull and Deck Information	5
Engine Information	6
PHOTOS	7
Edson SS steering wheel/Helm	7
head on	7
profile	7
full beam bench seat	7
forward seating	8
U/W lights	8
ACR searchlight	8
custom sunbrella covers	8
Stainless steel striker plate/anchor	9
Profile	9
Gel coat bottom	9
new carpet 1/2022	9
IMG_9510	10
new upholstrey 1/2022	10
IMG_9511	10
IMG_9497	10
IMG_9496	11
IMG_9498	11

fustion B/T stereo	11
Head	11
CONTACTS	12
Contact details	12
Telephones	12
Office hours	12
Address	12

SPECIFICATIONS

Overview

The legendary Tom Mason designed 39 cuddy by Midnight Express is known around the World by Government agencies, Military, and Law enforcement as "the interceptor". With a 13,000lb dry weight she delivers a solid feel and extremely agile handling at high speeds.

Ontrac was completely refitted by Midnight Express in 2011 to new boat condition, including all new motors, new bottom, steering linkage, steering pump, cushions, foam and vinyl seating, canvas T top, electronics, GOST system with Nav tracker, radar, all railings, and the arch were powder-coated. Also new lighting including underwater lights, deck and courtesy lighting, brand new telescoping outriggers. In January of 2022, the entire cuddy cabin was reupholstered including overheads, and new carpet was added to give her a new boat feel.

Nothing was left out on the complete overhaul in 2011, with a lot of custom features including a full-beam bench seat aft of the helm station seating allowing seating for 4 or a place to lay down and a polished stainless steel rubber in-laid Edson steering wheel with steering knob, also all-new Jabsco head system, battery charger for her Odyssey battery bank.

Her most recent upgrades are 2 new Garmin chart plotters with Garmin radar in July of 2020. She includes all the required safety equipment with a 4 person "Revere" liferaft and 2 spare stainless-steel props. She is equipped with a Muir windlass and a polished stainless steel DELTA plow anchor and a 3/8-inch-thick polished stainless steel strike plate on her stem for added safety.

She has been Captain maintained and dry stored inside year-round since her total refit. All pumps and hydraulic hoses have been replaced as needed. Ontrac is a must-see if you are in the market for a solid well designed fast and versatile center console. She can tournament fish offshore with her live bait well or cruise to the Bahamas in total comfort and safety. A true head-turner that always attracts on-lookers when out on the water.

Basic Information

Category: Boats

Sub Category: Center Console

Model Year: 2000

Year Built: 2000

Country: United States

Dimensions

LOA: 39' 2" (11.94mm)

Beam: 9.5

Min Draft: 1' 11" (0.58mm)

Max Draft: 2' (0.61mm)

Speed, Capacities and Weight

Cruise Speed: 34.76 Knots Kts. (40 MPH)

Cruise Speed Range: 275

Max Speed: 50.4 Knots Kts. (58 MPH)

Water Capacity: 45 Gallons

Holding Tank: 40 Gal Gallons

Fuel Capacity: 325 Gal Gallons

Fuel Consumption: 60 Gal Gallons

Accommodations

Total Cabins: 1

Total Berths: 2

Sleeps: 2

Total Heads: 1

Hull and Deck Information

Hull Material: Fiberglass

Deck Material: Fiberglass

Hull Configuration: Planing

Hull Color: Black/white

Hull Designer: Tom Mason

Engine Information

Engines: 3

Manufacturer: Yamaha

Engine Type: Outboard

Fuel Type: Gas

PHOTOS

Edson SS steering wheel/Helm



head on



profile



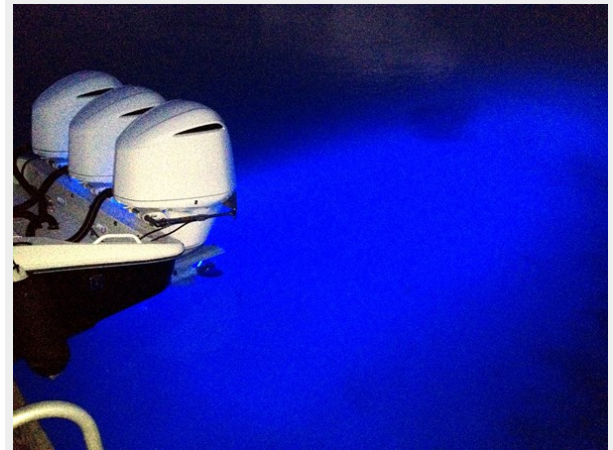
full beam bench seat



forward seating



U/W lights



ACR searchlight



custom sunbrella covers



Stainless steel striker plate/anchor



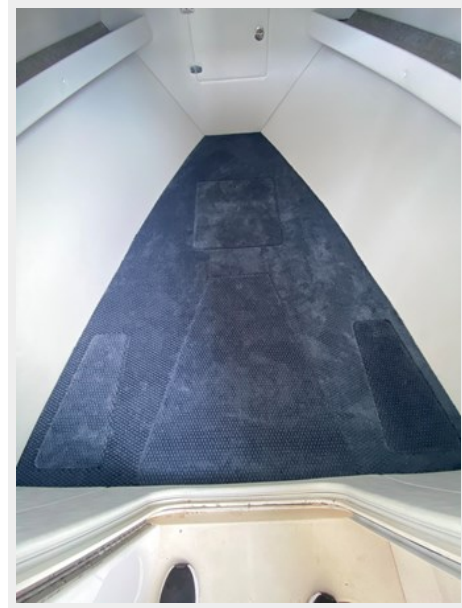
Profile



Gel coat bottom



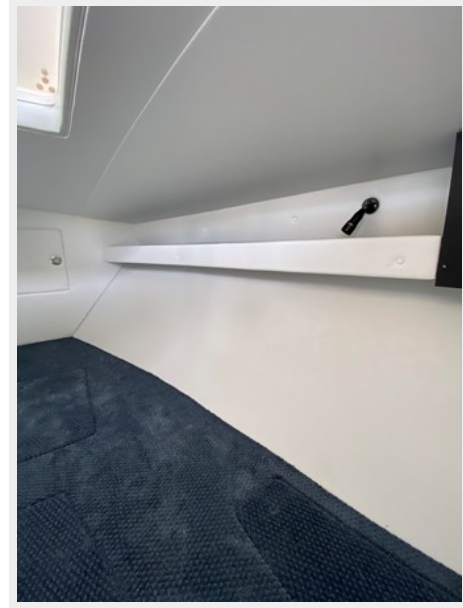
new carpet 1/2022



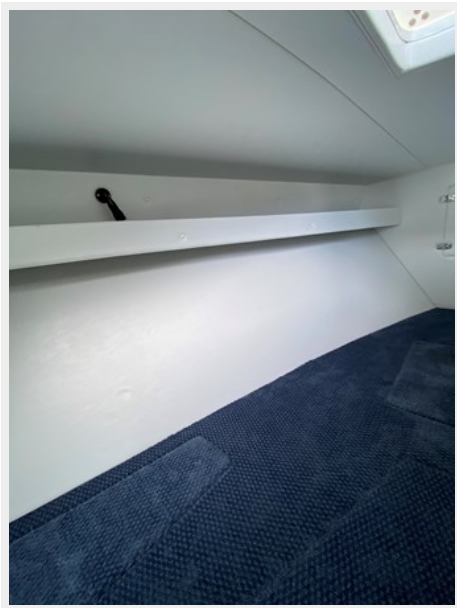
IMG_9510



new upholstrey 1/2022



IMG_9511



IMG_9497



IMG_9496



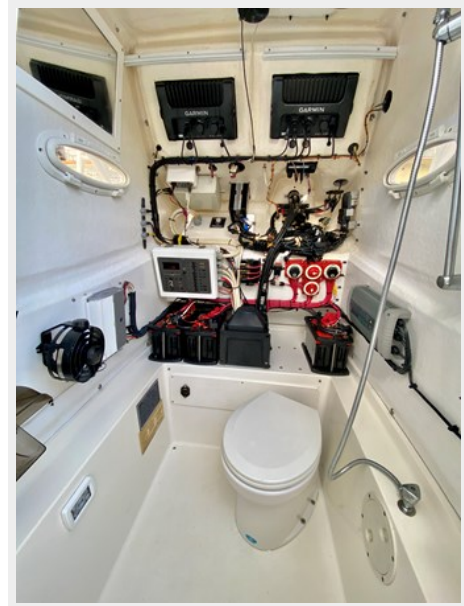
IMG_9498



fustion B/T stereo



Head



CONTACTS

Andrey Shestakov, leading yacht broker of the sales department of Shestakov Yacht Sales Inc. Shestakov Yacht Sales Inc., the official representative of the Miami/Fort Lauderdale FL headquarters.

Contact details

Email: andrey@shestakovyachtsales.com

Web: shestakovyachtsales.com/en/

Telephones

USA: +1(954)274-4435

Office hours

Monday – Saturday: **9:00 - 21:00** EDT

Sunday: **closed**

Address



Harbour Towne Marina, 850 NE 3rd St,
STE 213, Dania, FL 33004