

## TRUE NORTH — BROWARD



**Builder:** BROWARD

**Year Built:** 2001

**Model:** Motor Yacht

**Price:** PRICE ON APPLICATION

**Location:** Dominican Republic

**LOA:** 118' (35.97m)

**Beam:** 23

**Max Draft:** 6' 3" (1.9m)

**Cruise Speed:** 14 Knots Kts. (16 MPH)

**Max Speed:** 17 Knots Kts. (20 MPH)

Our experienced yacht broker, Andrey Shestakov, will help you choose and buy a yacht that best suits your needs **True North — BROWARD** from our catalogue. Presently, at Shestakov Yacht Sales Inc., we have a wide variety of yachts available on our sale's list. We also work in close contact with all the big yacht manufacturers from all over the world.

If you would like to buy a yacht **True North — BROWARD** or would like help answering any questions concerning purchasing, selling or chartering a yacht, please call **+1(954)274-4435**

# TABLE OF CONTENTS

---

TABLE OF CONTENTS	2
SPECIFICATIONS	6
Overview	6
Basic Information	6
Dimensions	6
Speed, Capacities and Weight	6
Accommodations	6
Hull and Deck Information	6
Engine Information	7
PHOTOS	8
Profile	8
Starboard Profile	8
Port Side	8
Flybridge	8
Wheelhouse	8
Salon Bar	8
Salon Entertainment	9
Salon Forward	9
Salon to Aft	9
Formal Dining	9
To Master Stateroom	9
Master Stateroom	9
Master Stateroom	10
Master Stateroom	10
Master Stateroom	10
Master Stateroom Bath	10
2nd Guest Stateroom	10
Aft Guest Suite	10

Day Head Sink	11
Day Head	11
Guest Stateroom	11
Guest Stateroom	11
Guest Stateroom	11
Guest Stateroom Bath	11
Guest Stateroom Shower	12
Crew Quarters	12
Hallway	12
Helm	12
Helm Console	12
Cockpit	12
Main Helm Console	13
Aft Teak Deck Seating	13
Main Deck Aft	13
Stairs to Flybridge	13
Flybridge Dinette	13
Flybridge Looking Aft	13
Flybridge Seating	14
Flybridge to Aft	14
Flybridge to Port	14
Flybridge to Starboard	14
Flybridge Wet Bar	14
Flybridge Console to Port	14
Flybridge Console to Starboard	15
Flybridge Garmin GPS	15
Furuno Radar	15
Furuno Radar	15
Companionway	15

Foredeck	15
Windlass	16
Anchor Locker	16
Compass	16
Hull	16
Port Sidedeck	16
Starboard Sidedeck	16
Pulpit	17
Radar	17
Engine Room	17
Engine Room	17
Engine Room	17
Engine Room	17
Engine Room	18
Starboard Engine	18
Port Engine	18
Life Raft	18
Swimming Platform	18
Transom Door	18
SeaDoo	19
Dinghy Davit	19
Dinghy	19
Dinghy Motor	19
NEW TOP DECK AWNING 2021	19
Stern View	19
NEW TOP DECK AWNING 2021	20
CONTACTS	21
Contact details	21
Telephones	21

---

Office hours	21
Address	21

---

# SPECIFICATIONS

---

## Overview

---

**2001 Broward 118' Raised Pilothouse MY**

## Basic Information

---

**Category:** Motor Yacht

**Sub Category:** Pilothouse

**Model Year:** 2001

**Year Built:** 2001

**Country:** Dominican Republic

## Dimensions

---

**LOA:** 118' (35.97mm)

**LWL:** 104' (31.7mm)

**Beam:** 23

**Max Draft:** 6' 3" (1.9mm)

## Speed, Capacities and Weight

---

**Cruise Speed:** 14 Knots Kts. (16 MPH)

**Max Speed:** 17 Knots Kts. (20 MPH)

**Water Capacity:** 620 Gallons

**Holding Tank:** 620 Gal Gallons

**Fuel Capacity:** 11000 Gal Gallons

## Accommodations

---

**Total Cabins:** 4

**Total Heads:** 8

## Hull and Deck Information

---

**Hull Material:** Aluminum

---

## Engine Information

---

**Engines:** 2

**Manufacturer:** Caterpillar

**Engine Type:** Inboard

**Fuel Type:** Diesel

# PHOTOS

**Profile**



**Starboard Profile**



**Port Side**



**Flybridge**



**Wheelhouse**



**Salon Bar**





**Salon Entertainment**



**Salon Forward**



**Salon to Aft**



**Formal Dining**



**To Master Stateroom**



**Master Stateroom**



**Master Stateroom**



**Master Stateroom**



**Master Stateroom**



**Master Stateroom Bath**



**2nd Guest Stateroom**



**Aft Guest Suite**



**Day Head Sink**



**Day Head**



**Guest Stateroom**



**Guest Stateroom**



**Guest Stateroom**



**Guest Stateroom Bath**



**Guest Stateroom Shower**



**Crew Quarters**



**Hallway**



**Helm**



**Helm Console**



**Cockpit**



**Main Helm Console**



**Aft Teak Deck Seating**



**Main Deck Aft**



**Stairs to Flybridge**



**Flybridge Dinette**



**Flybridge Looking Aft**



**Flybridge Seating**



**Flybridge to Aft**



**Flybridge to Port**



**Flybridge to Starboard**



**Flybridge Wet Bar**



**Flybridge Console to Port**



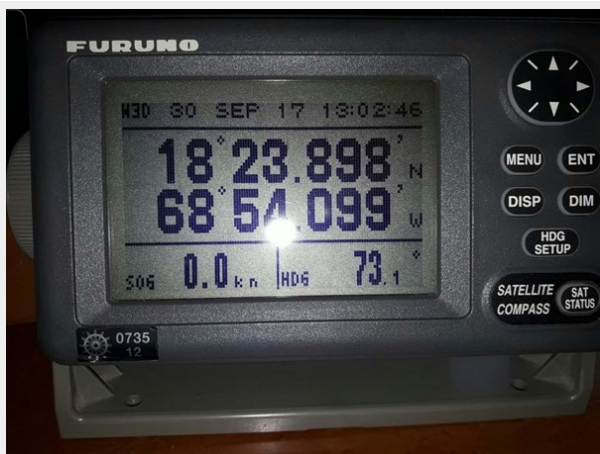
**Flybridge Console to Starboard**



**Flybridge Garmin GPS**



**Furuno Radar**



**Furuno Radar**



**Companionway**



**Foredeck**



**Windlass**



**Anchor Locker**



**Compass**



**Hull**



**Port Sidedeck**



**Starboard Sidedeck**





**Pulpit**



**Radar**



**Engine Room**



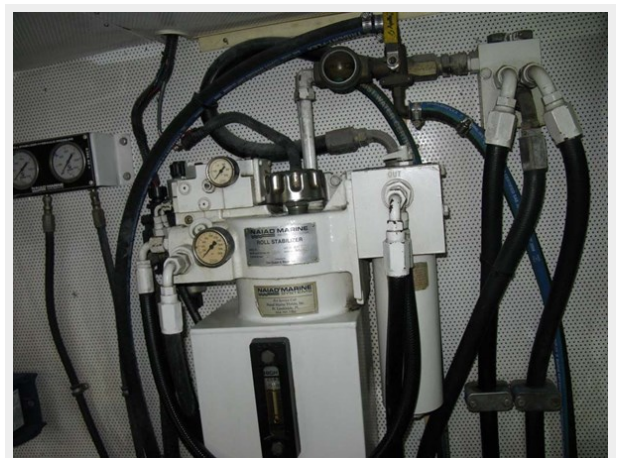
**Engine Room**



**Engine Room**



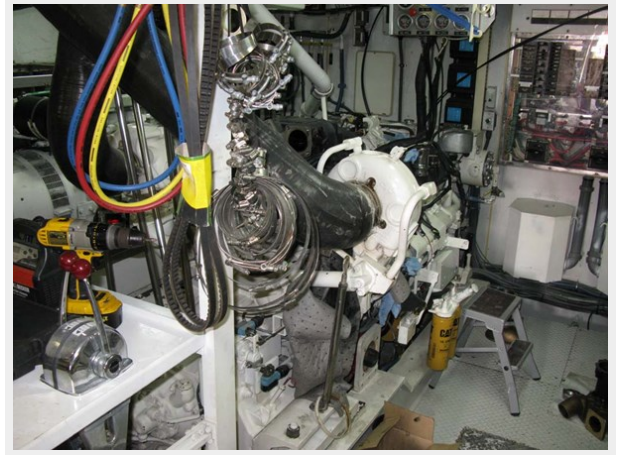
**Engine Room**



**Engine Room**



**Starboard Engine**



**Port Engine**



**Life Raft**



**Swimming Platform**



**Transom Door**



**SeaDoo**



**Dinghy Davit**



**Dinghy**



**Dinghy Motor**

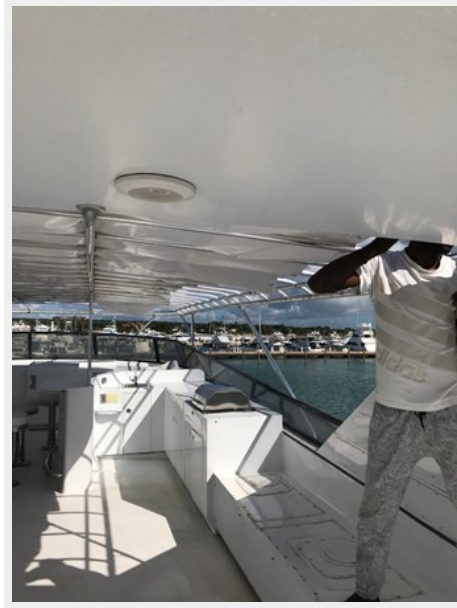


**NEW TOP DECK AWNING 2021**

**Stern View**



## NEW TOP DECK AWNING 2021



# CONTACTS

---

Andrey Shestakov, leading yacht broker of the sales department of Shestakov Yacht Sales Inc. Shestakov Yacht Sales Inc., the official representative of the Miami/Fort Lauderdale FL headquarters.

## Contact details

---

Email: [andrey@shestakovyachtsales.com](mailto:andrey@shestakovyachtsales.com)

Web: [shestakovyachtsales.com/en/](http://shestakovyachtsales.com/en/)

## Telephones

---

USA: +1(954)274-4435

## Office hours

---

Monday – Saturday: **9:00 - 21:00** EDT

Sunday: **closed**

## Address

---



Harbour Towne Marina, 850 NE 3rd St,  
STE 213, Dania, FL 33004