

SPECIAL K — SEA RAY



Builder: SEA RAY

Year Built: 2002

Model: Cruising Yacht

Price: PRICE ON APPLICATION

Location: United States

LOA: 51' (15.54mm)

Beam: 15.66

Min Draft: 4' 4" (1.32mm)

Max Draft: 4' 2" (1.27mm)

Cruise Speed: 24 Knots Kts. (28 MPH)

Max Speed: 29 Knots Kts. (33 MPH)

Our experienced yacht broker, Andrey Shestakov, will help you choose and buy a yacht that best suits your needs **SPECIAL K — SEA RAY** from our catalogue. Presently, at Shestakov Yacht Sales Inc., we have a wide variety of yachts available on our sale's list. We also work in close contact with all the big yacht manufacturers from all over the world.

If you would like to buy a yacht **SPECIAL K — SEA RAY** or would like help answering any questions concerning purchasing, selling or chartering a yacht, please call +1(954)274-4435

TABLE OF CONTENTS

TABLE OF CONTENTS	2
SPECIFICATIONS	5
Overview	5
Basic Information	5
Dimensions	5
Speed, Capacities and Weight	5
Accommodations	5
Hull and Deck Information	6
Engine Information	6
PHOTOS	7
Salon Looking Aft	7
Salon Looking Forward	7
Recliner	7
Aft Settee	7
Settee Table	7
Galley	7
Companionway	8
Galley	8
Guest Head	8
Guest Cabin	8
Master Stateroom Looking Forward	9
Master Looking to Port	9
Master Looking to Starboard	9
Master Head	9
Master Shower	9
Bow Area	9
Hardtop Equipment	10
Aft Deck Convertible Settee	10

Aft Deck Forward Settee	10
Overhead Speaker	10
Helm Area	10
Helm Upper	10
Helm Lower	11
Garmin Engine Display	11
Garmin Shadow Caster Display	11
Garmin Depth Display	11
Garmin Chart Plotter	11
Garmin Camera Display	11
Stbd Side of Helm	12
DC Panel	12
AC Panel	12
Engine Room Entrance	12
Stbd Engine	12
Outboard of Starboard Engine	12
Outboard of Starboard Engine	13
Generator	13
Cable Master	13
Port Engine	13
New Charger	13
Isolation Transformer	13
Alternate Profile	14
Stern Quarter	14
Stern	14
Stern Quarter	14
Bow Quarter	14
Alternate Profile	14
CONTACTS	15

Contact details	15
Telephones	15
Office hours	15
Address	15

SPECIFICATIONS

Overview

N/A

Basic Information

Category: Cruising Yacht

Sub Category: Express

Model Year: 2002

Year Built: 2002

Country: United States

Dimensions

LOA: 51' (15.54mm)

Beam: 15.66

Min Draft: 4' 4" (1.32mm)

Max Draft: 4' 2" (1.27mm)

Speed, Capacities and Weight

Cruise Speed: 24 Knots Kts. (28 MPH)

Max Speed: 29 Knots Kts. (33 MPH)

Water Capacity: 150 Gallons

Holding Tank: 68 Gal Gallons

Fuel Capacity: 600 Gal Gallons

Accommodations

Total Cabins: 2

Sleeps: 6

Total Heads: 2

Hull and Deck Information

Hull Material: Fiberglass

Engine Information

Engines: 2

Manufacturer: Cummins

Engine Type: Inboard

Fuel Type: Diesel

PHOTOS

Salon Looking Aft



Salon Looking Forward



Recliner



Aft Settee



Settee Table



Galley



Galley



Companionway



Guest Head



Guest Cabin



Master Stateroom Looking Forward



Master Looking to Port



Master Looking to Starboard



Master Head



Master Shower



Bow Area



Hardtop Equipment



Aft Deck Convertible Settee



Aft Deck Forward Settee



Overhead Speaker



Helm Area



Helm Upper



Helm Lower



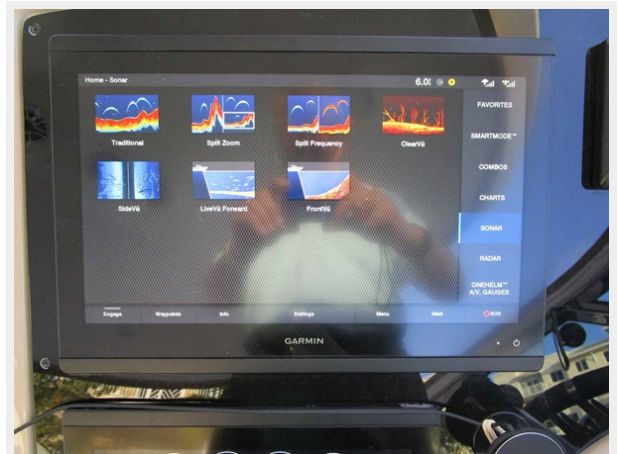
Garmin Engine Display



Garmin Shadow Caster Display



Garmin Depth Display



Garmin Chart Plotter



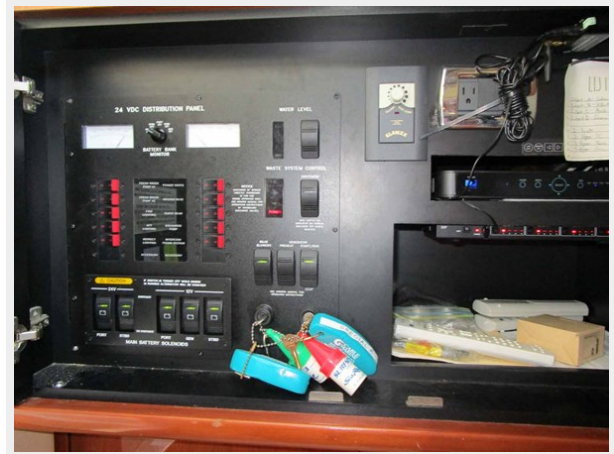
Garmin Camera Display



Stbd Side of Helm



DC Panel



AC Panel



Engine Room Entrance



Stbd Engine



Outboard of Starboard Engine



Outboard of Starboard Engine



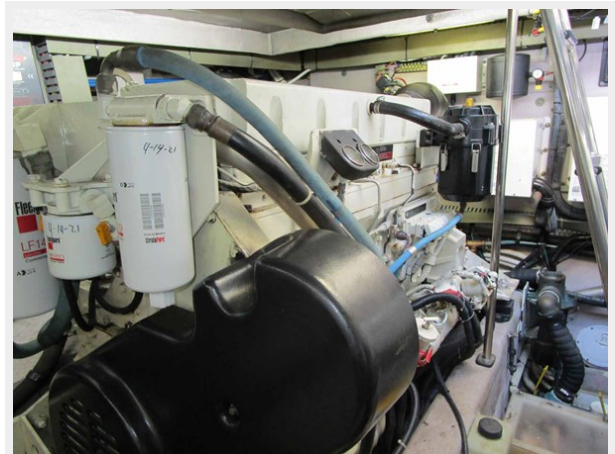
Generator



Cable Master



Port Engine



New Charger



Isolation Transformer



Alternate Profile



Stern Quarter



Stern



Stern Quarter



Bow Quarter



Alternate Profile



CONTACTS

Andrey Shestakov, leading yacht broker of the sales department of Shestakov Yacht Sales Inc. Shestakov Yacht Sales Inc., the official representative of the Miami/Fort Lauderdale FL headquarters.

Contact details

Email: andrey@shestakovyachtsales.com

Web: shestakovyachtsales.com/en/

Telephones

USA: +1(954)274-4435

Office hours

Monday – Saturday: **9:00 - 21:00** EDT

Sunday: **closed**

Address



Harbour Towne Marina, 850 NE 3rd St,
STE 213, Dania, FL 33004