

GRAND CRU — HATTERAS



Builder: HATTERAS

Year Built: 1988

Model: Motor Yacht

Price: PRICE ON APPLICATION

Location: United States

LOA: 40' (12.19mm)

Beam: 13.58

Min Draft: 4' 6" (1.37mm)

Max Draft: 4' 6" (1.37mm)

Cruise Speed: 8 Knots Kts. (9 MPH)

Max Speed: 18 Knots Kts. (21 MPH)

Our experienced yacht broker, Andrey Shestakov, will help you choose and buy a yacht that best suits your needs **Grand Cru — HATTERAS** from our catalogue. Presently, at Shestakov Yacht Sales Inc., we have a wide variety of yachts available on our sale's list. We also work in close contact with all the big yacht manufacturers from all over the world.

If you would like to buy a yacht **Grand Cru — HATTERAS** or would like help answering any questions concerning purchasing, selling or chartering a yacht, please call +1(954)274-4435

TABLE OF CONTENTS

TABLE OF CONTENTS	2
SPECIFICATIONS	5
Overview	5
Basic Information	5
Dimensions	5
Speed, Capacities and Weight	5
Accommodations	5
Hull and Deck Information	5
Engine Information	5
PHOTOS	6
0_2787016_40_hatteras_port_profile	6
1_2787016_40_hatteras_port_forward_profile2	6
2_2787016_40_hatteras_port_forward_profile1	6
3_2787016_40_hatteras_underway	6
5_2787016_40_hatteras_starboard_profile2	6
4_2787016_40_hatteras_starboard_profile1	6
6_2787016_40_hatteras_starboard_profile3	7
7_2787016_40_hatteras_starboard_aft_profile	7
8_2787016_40_hatteras_aft_profile	7
9_2787016_40_hatteras_anchor_windlass	7
10_2787016_40_hatteras_foredeck1	7
11_2787016_40_hatteras_foredeck2	7
13_2787016_40_hatteras_port_side_deck1	8
12_2787016_40_hatteras_foredeck_aft	8
14_2787016_40_hatteras_port_side_deck2	8
15_2787016_40_hatteras_starboard_side_deck1	8
16_2787016_40_hatteras_starboard_side_deck2	8
17_2787016_40_hatteras_flybridge_forward	8

18_2787016_40_hatteras_flybridge_aft	9
19_2787016_40_hatteras_flybridge_helm	9
21_2787016_40_hatteras_flybridge_forward_benchseat	9
20_2787016_40_hatteras_flybridge_helm_benchseat	9
22_2787016_40_hatteras_sundeck	9
23_2787016_40_hatteras_sundeck_port	9
24_2787016_40_hatteras_sundeck_starboard	10
25_2787016_40_hatteras_sundeck_forward	10
26_2787016_40_hatteras_sundeck_seating	10
27_2787016_40_hatteras_bbq_grill	10
28_2787016_40_hatteras_tender1	10
29_2787016_40_hatteras_tender2	10
30_2787016_40_hatteras_tender_outboard	11
31_2787016_40_hatteras_tender_davit	11
32_2787016_40_hatteras_salon_forward	11
33_2787016_40_hatteras_salon_aft	11
34_2787016_40_hatteras_salon_port	11
35_2787016_40_hatteras_salon_starboard	11
36_2787016_40_hatteras_salon_starboard_forward	12
37_2787016_40_hatteras_salon_port_seating	12
38_2787016_40_hatteras_salon_starboard_seating	12
39_2787016_40_hatteras_galley1	12
40_2787016_40_hatteras_galley2	12
41_2787016_40_hatteras_master_stateroom	12
42_2787016_40_hatteras_master_stateroom_port	13
43_2787016_40_hatteras_master_stateroom_starboard	13
45_2787016_40_hatteras_master_stateroom_head	13
44_2787016_40_hatteras_master_stateroom_forward	13
46_2787016_40_hatteras_master_stateroom_shower	13

47_2787016_40_hatteras_guest_stateroom	13
48_2787016_40_hatteras_guest_stateroom_port	14
49_2787016_40_hatteras_guest_stateroom_starboard	14
50_2787016_40_hatteras_guest_stateroom_head	14
51_2787016_40_hatteras_guest_stateroom_shower	14
52_2787016_40_hatteras_engine_room_access	14
53_2787016_40_hatteras_engine_room	14
55_2787016_40_hatteras_port_racor_fuel_filter	15
54_2787016_40_hatteras_port_main_engine	15
57_2787016_40_hatteras_starboard_racor_fuel_filter	15
56_2787016_40_hatteras_starboard_main_engine	15
58_2787016_40_hatteras_fuel_manifold	15
59_2787016_40_hatteras_oil_change_system	15
61_2787016_40_hatteras_electrical_panel	16
60_2787016_40_hatteras_water_heater	16
63_2787016_40_hatteras_generator_racor_fuel_filter	16
62_2787016_40_hatteras_generator	16
64_2787016_40_hatteras_battery_charger	16
65_2787016_40_hatteras_battery_switches	16
66_2787016_40_hatteras_solar_panels	17
CONTACTS	18
Contact details	18
Telephones	18
Office hours	18
Address	18

SPECIFICATIONS

Overview

Grand Cru is a 1988 40' Hatteras motoryacht in good condition with numerous upgrades. She offers twin Caterpillar 375 Hp main engines, Onan 8 kW generator, oil change system, solar panels, engine block heaters, custom hardtop on the flybridge and factory hardtop on the sundeck, updated interior and a 2 stateroom 2 head layout with an enclosed shower in each head. Grand Cru is a Great Loop veteran.

Basic Information

Category: Motor Yacht

Model Year: 1988

Year Built: 1988

Country: United States

Dimensions

LOA: 40' (12.19mm)

Beam: 13.58

Min Draft: 4' 6" (1.37mm)

Max Draft: 4' 6" (1.37mm)

Speed, Capacities and Weight

Cruise Speed: 8 Knots Kts. (9 MPH)

Max Speed: 18 Knots Kts. (21 MPH)

Water Capacity: 110 Gallons

Holding Tank: 40 Gal Gallons

Fuel Capacity: 359 Gal Gallons

Accommodations

Total Cabins: 2

Total Heads: 2

Hull and Deck Information

Hull Material: Fiberglass

Engine Information

Engines: 2

Manufacturer: Caterpillar

Engine Type: Inboard

Fuel Type: Diesel

PHOTOS

0_2787016_40_hatteras_port_profile



1_2787016_40_hatteras_port_forward_profile2



2_2787016_40_hatteras_port_forward_profile1



3_2787016_40_hatteras_underway



4_2787016_40_hatteras_starboard_profile1



5_2787016_40_hatteras_starboard_profile2



6_2787016_40_hatteras_starboard_profile3



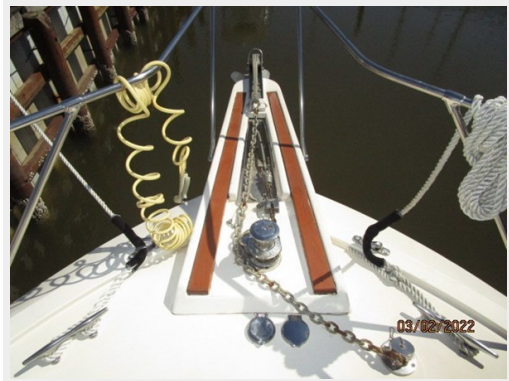
7_2787016_40_hatteras_starboard_aft_profile



8_2787016_40_hatteras_aft_profile



9_2787016_40_hatteras_anchor_windlass



10_2787016_40_hatteras_foredeck1



11_2787016_40_hatteras_foredeck2



12_2787016_40_hatteras_foredeck_aft



13_2787016_40_hatteras_port_side_deck1



14_2787016_40_hatteras_port_side_deck2



15_2787016_40_hatteras_starboard_side_deck1



16_2787016_40_hatteras_starboard_side_deck2



17_2787016_40_hatteras_flybridge_forward



18_2787016_40_hatteras_flybridge_aft



19_2787016_40_hatteras_flybridge_helm



21_2787016_40_hatteras_flybridge_forward_benchseat

20_2787016_40_hatteras_flybridge_helm_benchseat



22_2787016_40_hatteras_sundeck



23_2787016_40_hatteras_sundeck_port



24_2787016_40_hatteras_sundeck_starboard



25_2787016_40_hatteras_sundeck_forward



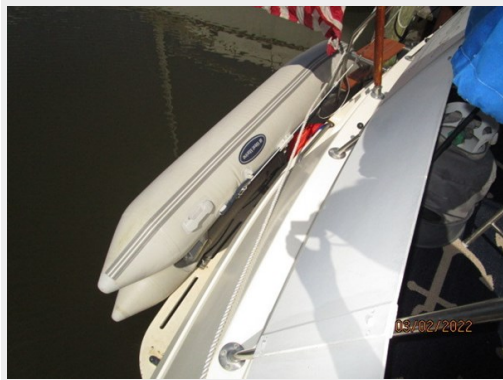
26_2787016_40_hatteras_sundeck_seating



27_2787016_40_hatteras_bbq_grill



28_2787016_40_hatteras_tender1



29_2787016_40_hatteras_tender2



30_2787016_40_hatteras_tender_outboard



31_2787016_40_hatteras_tender_davit



32_2787016_40_hatteras_salon_forward



33_2787016_40_hatteras_salon_aft



34_2787016_40_hatteras_salon_port



35_2787016_40_hatteras_salon_starboard



36_2787016_40_hatteras_salon_starboard_forward



37_2787016_40_hatteras_salon_port_seating



38_2787016_40_hatteras_salon_starboard_seating



39_2787016_40_hatteras_galley1



40_2787016_40_hatteras_galley2



41_2787016_40_hatteras_master_stateroom



42_2787016_40_hatteras_master_stateroom_port 43_2787016_40_hatteras_master_stateroom_starboard



45_2787016_40_hatteras_master_stateroom_head

44_2787016_40_hatteras_master_stateroom_forward



46_2787016_40_hatteras_master_stateroom_shower



47_2787016_40_hatteras_guest_stateroom



48_2787016_40_hatteras_guest_stateroom_port



49_2787016_40_hatteras_guest_stateroom_starboard



50_2787016_40_hatteras_guest_stateroom_head



51_2787016_40_hatteras_guest_stateroom_shower



52_2787016_40_hatteras_engine_room_access



53_2787016_40_hatteras_engine_room



54_2787016_40_hatteras_port_main_engine



55_2787016_40_hatteras_port_racor_fuel_filter



57_2787016_40_hatteras_starboard_racor_fuel_filter



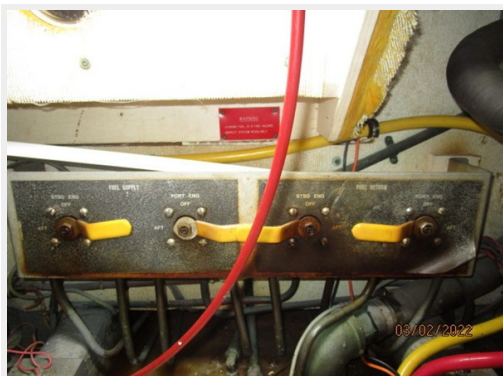
56_2787016_40_hatteras_starboard_main_engine



59_2787016_40_hatteras_oil_change_system



58_2787016_40_hatteras_fuel_manifold



61_2787016_40_hatteras_electrical_panel

60_2787016_40_hatteras_water_heater



63_2787016_40_hatteras_generator_racor_fuel_filter

62_2787016_40_hatteras_generator



64_2787016_40_hatteras_battery_charger



65_2787016_40_hatteras_battery_switches



66_2787016_40_hatteras_solar_panels



CONTACTS

Andrey Shestakov, leading yacht broker of the sales department of Shestakov Yacht Sales Inc. Shestakov Yacht Sales Inc., the official representative of the Miami/Fort Lauderdale FL headquarters.

Contact details

Email:
andrey@shestakovyachtsales.com

Web: shestakovyachtsales.com/en/

Telephones

USA: +1(954)274-4435

Office hours

Monday – Saturday: 9:00 - 21:00 EDT

Sunday: closed

Address



Harbour Towne Marina, 850 NE 3rd St,
STE 213, Dania, FL 33004