

BASMALINA II — ICON YACHTS



Builder: ICON YACHTS

Year Built: 2011

Model: Motor Yacht

Price: **PRICE ON APPLICATION**

LOA: 136' 6" (41.6mm)

Beam: 26.67

Max Draft: 7' 9" (2.35mm)

Cruise Speed: 12 Knots Kts. (14 MPH)

Max Speed: 17 Knots Kts. (20 MPH)

Our experienced yacht broker, Andrey Shestakov, will help you choose and buy a yacht that best suits your needs **Basmalina II — ICON YACHTS** from our catalogue. Presently, at Shestakov Yacht Sales Inc., we have a wide variety of yachts available on our sale's list. We also work in close contact with all the big yacht manufacturers from all over the world.

If you would like to buy a yacht **Basmalina II — ICON YACHTS** or would like help answering any questions concerning purchasing, selling or chartering a yacht, please call **+1(954)274-4435**

TABLE OF CONTENTS

TABLE OF CONTENTS	2
SPECIFICATIONS	4
Basic Information	4
Dimensions	4
Speed, Capacities and Weight	4
Accommodations	4
Hull and Deck Information	5
Engine Information	5
PHOTOS	6
Screenshot 2022-03-08 at 11.31.13	6
Screenshot 2022-03-08 at 11.30.52	6
Screenshot 2022-03-08 at 11.31.21	6
Screenshot 2022-03-08 at 11.31.26	6
Screenshot 2022-03-08 at 11.31.32	6
Screenshot 2022-03-08 at 11.31.40	6
Screenshot 2022-03-08 at 11.31.46	7
Screenshot 2022-03-08 at 11.31.52	7
Screenshot 2022-03-08 at 11.32.14	7
Screenshot 2022-03-08 at 11.32.37	7
Screenshot 2022-03-08 at 11.32.59	7
Screenshot 2022-03-08 at 11.33.06	7
Screenshot 2022-03-08 at 11.33.54	8
Screenshot 2022-03-08 at 11.34.29	8
Screenshot 2022-03-08 at 11.34.33	8
Screenshot 2022-03-08 at 11.34.38	8
Screenshot 2022-03-08 at 11.34.43	8
Screenshot 2022-03-08 at 11.35.29	8
CONTACTS	9

Contact details	9
Telephones	9
Office hours	9
Address	9

SPECIFICATIONS

Basic Information

Category: Motor Yacht

Model Year: 2011

Year Built: 2011

Dimensions

LOA: 136' 6" (41.6mm)

Beam: 26.67

Max Draft: 7' 9" (2.35mm)

Speed, Capacities and Weight

Cruise Speed: 12 Knots Kts. (14 MPH)

Cruise Speed Range: 2500

Max Speed: 17 Knots Kts. (20 MPH)

Gross Tonnage: 347 Pounds

Water Capacity: 3900 Gallons

Fuel Capacity: 9246.02 Gal Gallons

Fuel Consumption: 10.04 Gal Gallons

Accommodations

Total Cabins: 5

Sleeps: 10

Total Heads: 11

Crew Cabin: 8

Crew Heads: 4

Hull and Deck Information

Hull Material: GRP

Deck Material: Teak

Hull Color: Oyster White

Exterior Designer: Cayros Yacht Design

Interior Designer: Botero Design

Engine Information

Engines: 2

Manufacturer: MTU

Engine Type: Inboard

Fuel Type: Diesel

PHOTOS

Screenshot 2022-03-08 at 11.30.52



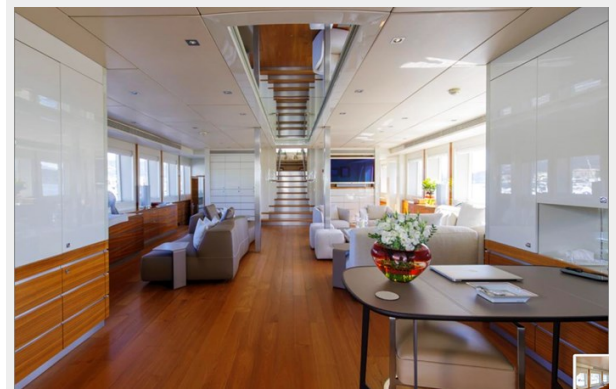
Screenshot 2022-03-08 at 11.31.13



Screenshot 2022-03-08 at 11.31.21



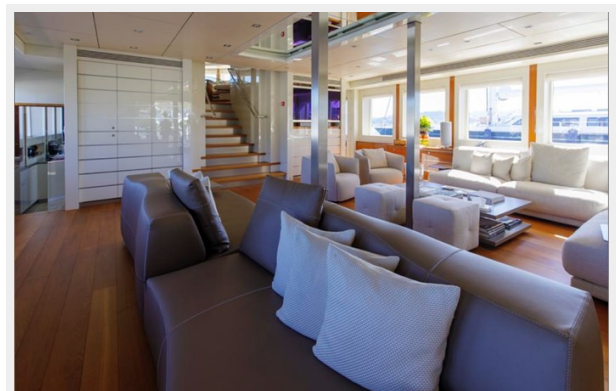
Screenshot 2022-03-08 at 11.31.26



Screenshot 2022-03-08 at 11.31.32



Screenshot 2022-03-08 at 11.31.40



Screenshot 2022-03-08 at 11.31.46



Screenshot 2022-03-08 at 11.31.52



Screenshot 2022-03-08 at 11.32.14



Screenshot 2022-03-08 at 11.32.37



Screenshot 2022-03-08 at 11.32.59



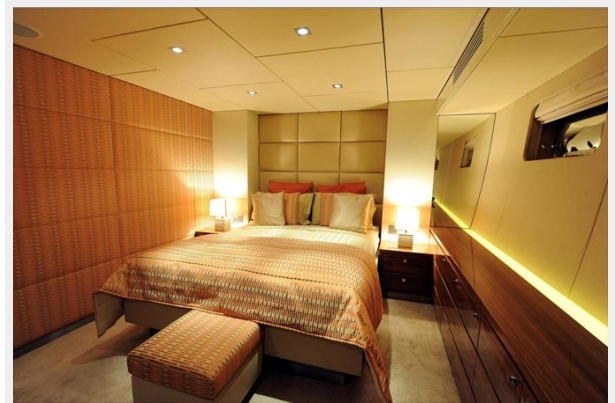
Screenshot 2022-03-08 at 11.33.06



Screenshot 2022-03-08 at 11.33.54



Screenshot 2022-03-08 at 11.34.29



Screenshot 2022-03-08 at 11.34.33



Screenshot 2022-03-08 at 11.34.38



Screenshot 2022-03-08 at 11.34.43



Screenshot 2022-03-08 at 11.35.29



CONTACTS

Andrey Shestakov, leading yacht broker of the sales department of Shestakov Yacht Sales Inc. Shestakov Yacht Sales Inc., the official representative of the Miami/Fort Lauderdale FL headquarters.

Contact details

Email: andrey@shestakovyachtsales.com

Web: shestakovyachtsales.com/en/

Telephones

USA: +1(954)274-4435

Office hours

Monday – Saturday: **9:00 - 21:00** EDT

Sunday: **closed**

Address



Harbour Towne Marina, 850 NE 3rd St,
STE 213, Dania, FL 33004