

DEAR HENRI — ANTAGO YACHTS



Builder: ANTAGO YACHTS

Year Built: 1998

Model: Motor Yacht

Price: PRICE ON APPLICATION

Location: United States

LOA: 110' (33.53mm)

Beam: 24.08

Min Draft: 6' 10" (2.08mm)

Max Draft: 7' (2.13mm)

Cruise Speed: 24 Knots Kts. (28 MPH)

Max Speed: 29 Knots Kts. (33 MPH)

Our experienced yacht broker, Andrey Shestakov, will help you choose and buy a yacht that best suits your needs **DEAR HENRI — ANTAGO YACHTS** from our catalogue. Presently, at Shestakov Yacht Sales Inc., we have a wide variety of yachts available on our sale's list. We also work in close contact with all the big yacht manufacturers from all over the world.

If you would like to buy a yacht **DEAR HENRI — ANTAGO YACHTS** or would like help answering any questions concerning purchasing, selling or chartering a yacht, please call **+1(954)274-4435**

TABLE OF CONTENTS

TABLE OF CONTENTS	2
SPECIFICATIONS	5
Basic Information	5
Dimensions	5
Speed, Capacities and Weight	5
Accommodations	5
Hull and Deck Information	5
Engine Information	6
PHOTOS	7
Salon Looking Forward	7
Salon Portside	7
Salon Stbd Side	7
Portside Settee	7
Portside Settee	7
Starboard Side Settee	7
Starboard Side Salon	8
Salon Looking Aft	8
Forward Salon	8
Dining Salon to Port	8
Dining Salon	8
Day Head	8
Pilothouse Auxiliary Steps	9
Office	9
Galley Looking Forward	9
Galley	9
Galley	9
Galley Settee	9
Galley Crew Steps	10

Pilothouse	10
Pilothouse Nav Station	10
Pilothouse to Port	10
Pilothouse Settee	10
Pilothouse to Stbd	10
Accommodation Steps	11
Accommodation Foyer	11
Master Looking Aft	11
Master Looking to Port	11
Master Looking to Port	11
Master Looking to Stbd	11
His Head	12
His Head	12
Her Head Looking Inboard	12
Her Head Looking Outboard	12
Stbd Guest Cabin	12
Stbd Guest Head	12
Port Guest Cabin	13
Stbd Guest Head	13
VIP Double	13
VIP Twin	13
VIP Looking to Port	13
VIP Head	13
Bow Area	14
Bow Hot Tub	14
Wide Side Decks	14
Aft Deck	14
Warping Windlass	14
Aft Deck	14

Steps to Flybridge	15
Extended Swim Platform	15
Flybridge Looking Forward	15
Boat Deck Lounges	15
Crane	15
Stbd Side Seating	15
Portside Seating	16
Looking Aft	16
Electrical Panel	16
Atlas Shore Power	16
Engine Room Access	16
Stbd Engine	16
Engine Electronics	17
V Drive	17
New Chiller	17
New 40 KW Phasor Apr. 2022	17
Fuel System	17
Watermaker	17
CONTACTS	18
Contact details	18
Telephones	18
Office hours	18
Address	18

SPECIFICATIONS

Basic Information

Category: Motor Yacht

Model Year: 1998

Year Built: 1998

Country: United States

Dimensions

LOA: 110' (33.53mm)

Beam: 24.08

Min Draft: 6' 10" (2.08mm)

Max Draft: 7' (2.13mm)

Speed, Capacities and Weight

Cruise Speed: 24 Knots Kts. (28 MPH)

Cruise Speed Range: 550

Max Speed: 29 Knots Kts. (33 MPH)

Gross Tonnage: 150 Pounds

Water Capacity: 1300 Gallons

Fuel Capacity: 3950 Gal Gallons

Accommodations

Total Cabins: 4

Sleeps: 8

Total Heads: 9

Crew Cabin: 5

Crew Heads: 3

Hull and Deck Information

Hull Material: Fiberglass

Hull Configuration: Modified V-Hull

Exterior Designer: Fulvio de Simoni

Engine Information

Engines: 2

Manufacturer: MTU

Engine Type: Inboard

Fuel Type: Diesel

PHOTOS

Salon Looking Forward



Salon Portside



Salon Stbd Side



Portside Settee



Portside Settee



Starboard Side Settee



Starboard Side Salon



Salon Looking Aft



Forward Salon



Dining Salon to Port



Dining Salon



Day Head



Pilothouse Auxiliary Steps



Office



Galley Looking Forward



Galley



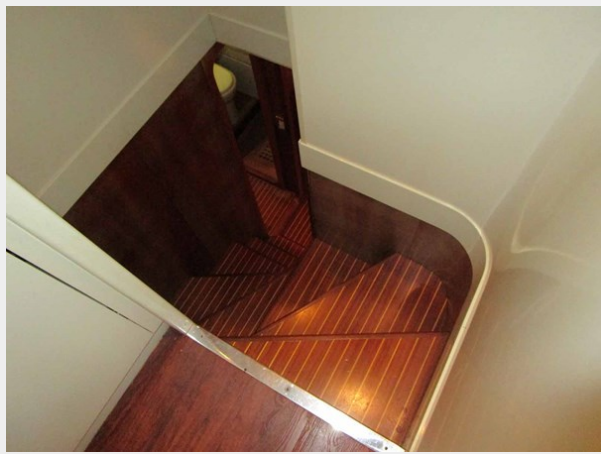
Galley



Galley Settee



Galley Crew Steps



Pilothouse



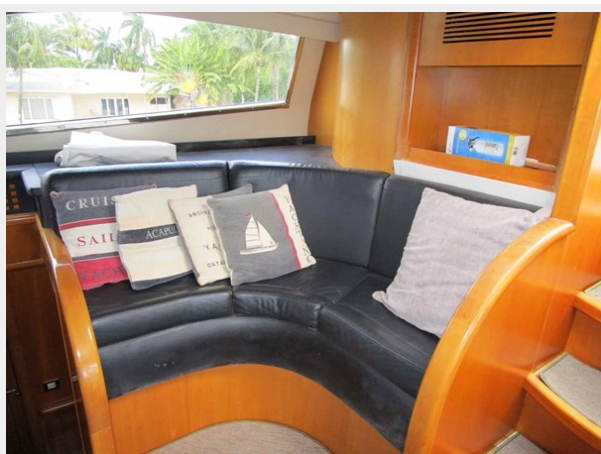
Pilothouse Nav Station



Pilothouse to Port



Pilothouse Settee



Pilothouse to Stbd



Accommodation Steps



Accommodation Foyer



Master Looking Aft



Master Looking to Port



Master Looking to Port



Master Looking to Stbd



His Head



His Head



Her Head Looking Inboard



Her Head Looking Outboard



Stbd Guest Cabin



Stbd Guest Head



Port Guest Cabin



Stbd Guest Head



VIP Double



VIP Twin



VIP Looking to Port



VIP Head



Bow Area



Bow Hot Tub



Wide Side Decks



Aft Deck



Warping Windlass



Aft Deck



Extended Swim Platform



Steps to Flybridge



Flybridge Looking Forward



Boat Deck Lounges



Crane



Stbd Side Seating



Portside Seating



Looking Aft



Electrical Panel



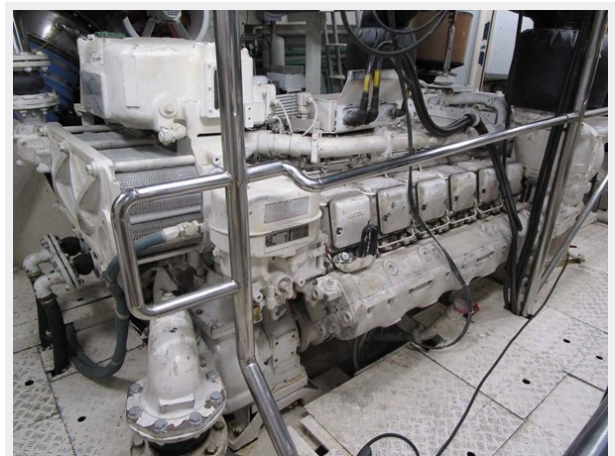
Atlas Shore Power



Engine Room Access



Stbd Engine



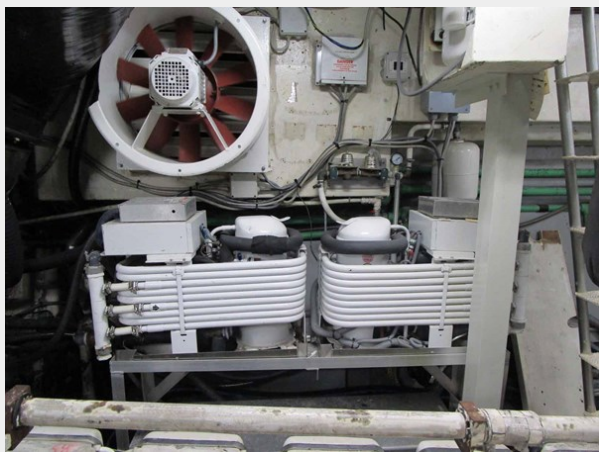
Engine Electronics



V Drive



New Chiller



New 40 KW Phasor Apr. 2022



Fuel System



Watermaker



CONTACTS

Andrey Shestakov, leading yacht broker of the sales department of Shestakov Yacht Sales Inc. Shestakov Yacht Sales Inc., the official representative of the Miami/Fort Lauderdale FL headquarters.

Contact details

Email: andrey@shestakovyachtsales.com

Web: shestakovyachtsales.com/en/

Telephones

USA: +1(954)274-4435

Office hours

Monday – Saturday: **9:00 - 21:00** EDT

Sunday: **closed**

Address



Harbour Towne Marina, 850 NE 3rd St,
STE 213, Dania, FL 33004