

REGAL 30 EXPRESS — REGAL



Builder: REGAL

Year Built: 2015

Model: Cruising Yacht

Price: PRICE ON APPLICATION

Location: United States

LOA: 29' 5" (8.97m)

Beam: 9.5

Min Draft: 1' 10" (0.56m)

Max Draft: 3' 3" (0.99m)

Our experienced yacht broker, Andrey Shestakov, will help you choose and buy a yacht that best suits your needs **REGAL 30 EXPRESS — REGAL** from our catalogue. Presently, at Shestakov Yacht Sales Inc., we have a wide variety of yachts available on our sale's list. We also work in close contact with all the big yacht manufacturers from all over the world.

If you would like to buy a yacht **REGAL 30 EXPRESS — REGAL** or would like help answering any questions concerning purchasing, selling or chartering a yacht, please call **+1(954)274-4435**

TABLE OF CONTENTS

TABLE OF CONTENTS	2
SPECIFICATIONS	6
Overview	6
Basic Information	6
Dimensions	6
Speed, Capacities and Weight	6
Accommodations	6
Hull and Deck Information	6
Engine Information	7
PHOTOS	8
01.profile	8
02.profile.port	8
03.profile.stb	8
04.profile.aft	8
05.land	8
06.land.port	8
07.land.port2	9
08.stern	9
10.profile.bow	9
11.helm	9
12.helm.cover	9
13.helm.gps	9
14.helm.vhf	10
15.cockpit.wetbar	10
16.cockpit.fwd	10
17.cockpit.fwd2	10
18.cockpit.fwd3	10
18.helm.hrs	10

19.cabin	11
20.cabin.galley	11
21.cabin.galley2	11
21.cabin.galley3	11
22.cabin.aft	11
23.cabin.v-berth	11
24.head-shower	12
25.cabin.TV	12
26.cabin.ac contrl	12
27.cabin.stereo	12
28.deck.bow	12
29.deck.spot lt	12
30.cockpit.shower	13
31.cockpit.switches	13
32.cockpit.cord	13
33.cockpit.shore power cord	13
34.transom name	13
35.engine.port	13
36.engine.port2	14
37.engine.stb	14
38.generator	14
40.holding tnk	14
41.transom flush	14
IMG_5943	14
IMG_5944	15
IMG_5945	15
IMG_5946	15
IMG_5947	15
IMG_5948	15

18.cockpit.fwd3	15
18.helm.hrs	16
IMG_5950	16
IMG_5951	16
IMG_5952	16
34.transom name	16
35.engine.port	16
36.engine.port2	17
37.engine.stb	17
38.generator	17
40.holding tnk	17
41.transom flush	17
IMG_5938	17
IMG_5939	18
IMG_5940	18
IMG_5941	18
IMG_5942	18
IMG_5943	18
IMG_5944	18
IMG_5945	19
IMG_5946	19
IMG_5947	19
IMG_5948	19
IMG_5950	19
IMG_5951	19
IMG_5952	20
IMG_5953	20
IMG_5954	20
IMG_5955	20

IMG_5996	20
CONTACTS	21
Contact details	21
Telephones	21
Office hours	21
Address	21

SPECIFICATIONS

Overview

2016 Regal 30 Express

Clean and Ready to Go!!

Basic Information

Category: Cruising Yacht

Model Year: 2016

Year Built: 2015

Country: United States

Dimensions

LOA: 29' 5" (8.97mm)

Beam: 9.5

Min Draft: 1' 10" (0.56mm)

Max Draft: 3' 3" (0.99mm)

Speed, Capacities and Weight

Water Capacity: 35 Gallons

Holding Tank: 18 Gal Gallons

Fuel Capacity: 100 Gal Gallons

Accommodations

Total Cabins: 1

Total Berths: 3

Sleeps: 4

Total Heads: 1

Hull and Deck Information

Hull Material: Fiberglass

Engine Information

Engines: 2

Manufacturer: Volvo Penta

Engine Type: I/O

Fuel Type: Gas/Petrol

PHOTOS

01.profile



02.profile.port



03.profile.stb



04.profile.aft



05.land



06.land.port



07.land.port2



08.stern



10.profile.bow



11.helm



12.helm.cover



13.helm.gps



14.helm.vhf



15.cockpit.wetbar



16.cockpit.fwd



17.cockpit.fwd2



18.cockpit.fwd3



18.helm.hrs



19.cabin



20.cabin.galley



21.cabin.galley2



21.cabin.galley3



22.cabin.aft



23.cabin.v-berth



24.head-shower



25.cabin.TV



26.cabin.ac contrl



27.cabin.stereo



28.deck.bow



29.deck.spot lt



30.cockpit.shower



31.cockpit.switches



32.cockpit.cord



33.cockpit.shore power cord



34.transom name



35.engine.port



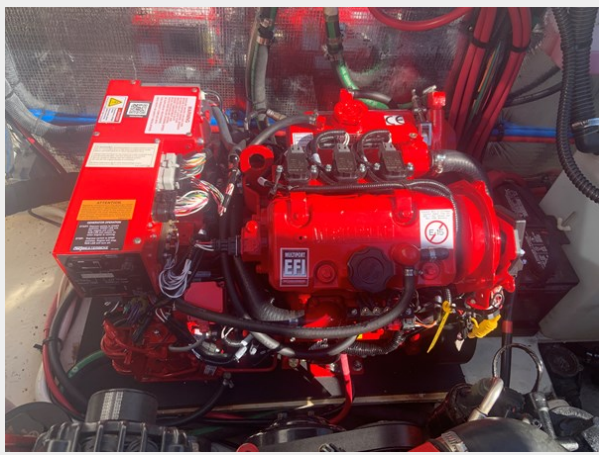
36.engine.port2



37.engine.stb



38.generator



40.holding trnk



41.transom flush



IMG_5943



IMG_5944



IMG_5945



IMG_5946



IMG_5947



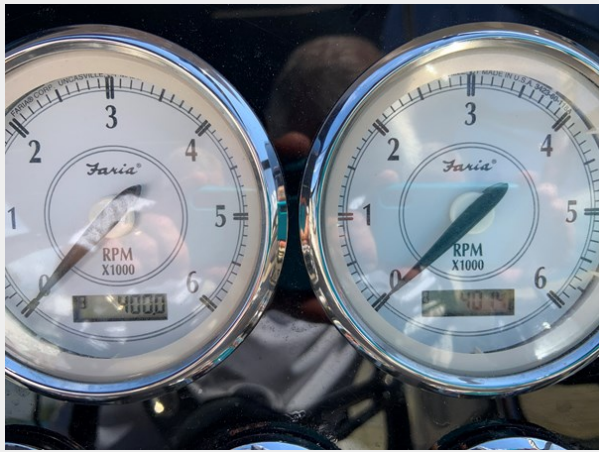
IMG_5948



18.cockpit.fwd3



18.helm.hrs



IMG_5950



IMG_5951



IMG_5952



34.transom name



35.engine.port



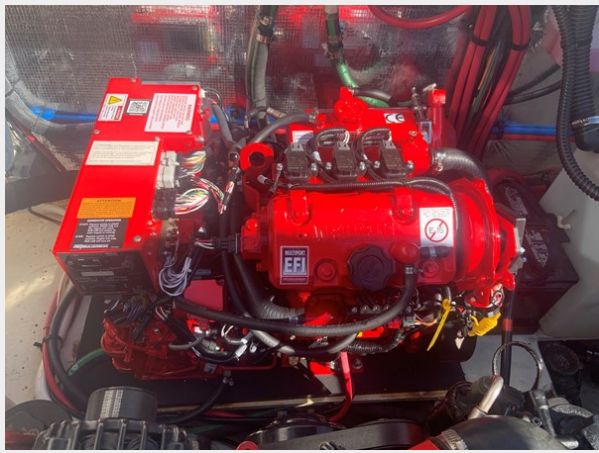
36.engine.port2



37.engine.stb



38.generator



40.holding trnk



41.transom flush



IMG_5938



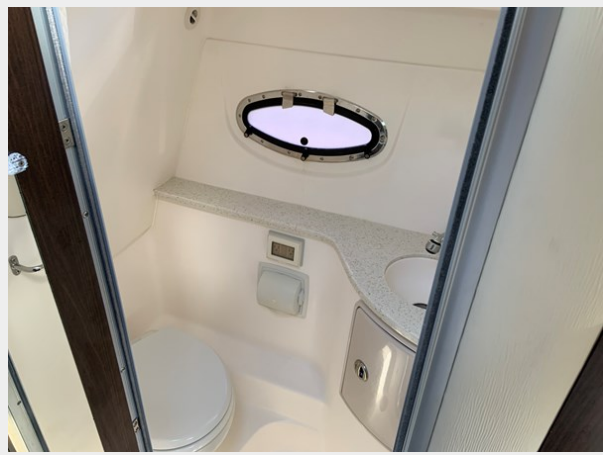
IMG_5939



IMG_5940



IMG_5941



IMG_5942



IMG_5943



IMG_5944



IMG_5945



IMG_5946



IMG_5947



IMG_5948



IMG_5950



IMG_5951



IMG_5952



IMG_5953



IMG_5954



IMG_5955



IMG_5996



CONTACTS

Andrey Shestakov, leading yacht broker of the sales department of Shestakov Yacht Sales Inc. Shestakov Yacht Sales Inc., the official representative of the Miami/Fort Lauderdale FL headquarters.

Contact details

Email: andrey@shestakovyachtsales.com

Web: shestakovyachtsales.com/en/

Telephones

USA: +1(954)274-4435

Office hours

Monday – Saturday: **9:00 - 21:00** EDT

Sunday: **closed**

Address



Harbour Towne Marina, 850 NE 3rd St,
STE 213, Dania, FL 33004