

HAKUNA MATATA — MANGUSTA



Builder: MANGUSTA

Year Built: 2000

Model: Motor Yacht

Price: PRICE ON APPLICATION

Location: United States

LOA: 80' (24.38m)

Beam: 19.25

Max Draft: 5' 6" (1.68m)

Max Speed: 35 Knots Kts. (40 MPH)

Our experienced yacht broker, Andrey Shestakov, will help you choose and buy a yacht that best suits your needs **Hakuna Matata — MANGUSTA** from our catalogue. Presently, at Shestakov Yacht Sales Inc., we have a wide variety of yachts available on our sale's list. We also work in close contact with all the big yacht manufacturers from all over the world.

If you would like to buy a yacht **Hakuna Matata — MANGUSTA** or would like help answering any questions concerning purchasing, selling or chartering a yacht, please call **+1(954)274-4435**

TABLE OF CONTENTS

| | |
|------------------------------|---|
| TABLE OF CONTENTS | 2 |
| SPECIFICATIONS | 5 |
| Overview | 5 |
| Basic Information | 5 |
| Dimensions | 5 |
| Speed, Capacities and Weight | 5 |
| Accommodations | 5 |
| Hull and Deck Information | 5 |
| Engine Information | 6 |
| PHOTOS | 7 |
| DLP00007 | 7 |
| DLP00010 | 7 |
| DLP00022 | 7 |
| DLP00025 | 7 |
| DLP00028 | 7 |
| DLP00031 | 7 |
| DLP00037 | 8 |
| DLP00040 | 8 |
| DLP00046 | 8 |
| DLP00049 | 8 |
| DLP00052 | 8 |
| DLP00055 | 8 |
| DLP00058 | 9 |
| DLP00064 | 9 |
| DLP00070 | 9 |
| DLP00073 | 9 |
| DLP00076 | 9 |
| DLP00080 | 9 |

| | |
|----------|----|
| DLP00089 | 10 |
| DLP00097 | 10 |
| DLP00100 | 10 |
| DLP00105 | 10 |
| DLP00106 | 10 |
| DLP00109 | 10 |
| DLP00115 | 11 |
| DLP00118 | 11 |
| DLP00124 | 11 |
| DLP00127 | 11 |
| DLP00136 | 11 |
| DLP00139 | 11 |
| DLP00144 | 12 |
| DLP00150 | 12 |
| DLP00155 | 12 |
| DLP00159 | 12 |
| DLP00162 | 12 |
| DLP00171 | 12 |
| DLP00174 | 13 |
| DLP00177 | 13 |
| DLP00204 | 13 |
| DLP00207 | 13 |
| DLP00210 | 13 |
| DLP00222 | 13 |
| DLP00228 | 14 |
| DLP00231 | 14 |
| DLP00234 | 14 |
| DLP00243 | 14 |
| IMG_0757 | 14 |

| | |
|-----------------|----|
| IMG_0758 | 14 |
| IMG_0759 | 15 |
| IMG_0760 | 15 |
| IMG_0763 | 15 |
| IMG_0764 | 15 |
| CONTACTS | 16 |
| Contact details | 16 |
| Telephones | 16 |
| Office hours | 16 |
| Address | 16 |

SPECIFICATIONS

Overview

****Preliminary Listing****

Basic Information

Category: Motor Yacht

Model Year: 2000

Year Built: 2000

Country: United States

Dimensions

LOA: 80' (24.38mm)

Beam: 19.25

Max Draft: 5' 6" (1.68mm)

Speed, Capacities and Weight

Max Speed: 35 Knots Kts. (40 MPH)

Water Capacity: 343 Gallons

Fuel Capacity: 1585 Gal Gallons

Accommodations

Total Cabins: 4

Hull and Deck Information

Hull Material: Fiberglass

Engine Information

Engines: 2

Manufacturer: MTU

Engine Type: Inboard

Fuel Type: Diesel

PHOTOS

DLP00007



DLP00010



DLP00022



DLP00025



DLP00028



DLP00031



DLP00037



DLP00040



DLP00046



DLP00049



DLP00052



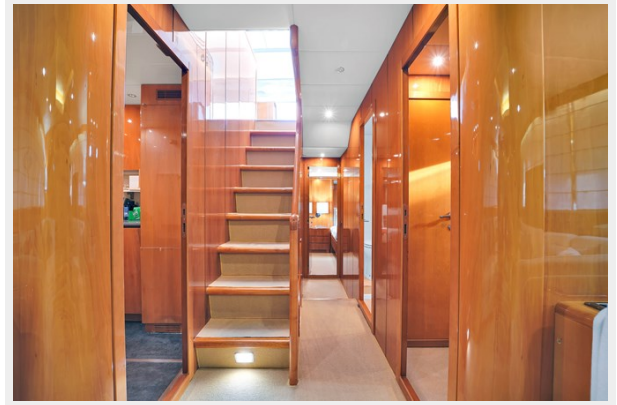
DLP00055



DLP00058



DLP00064



DLP00070



DLP00073



DLP00076



DLP00080



DLP00089



DLP00097



DLP00100



DLP00105



DLP00106



DLP00109



DLP00115



DLP00118



DLP00124



DLP00127



DLP00136



DLP00139



DLP00144



DLP00150



DLP00155



DLP00159



DLP00162



DLP00171



DLP00174



DLP00177



DLP00204



DLP00207



DLP00210



DLP00222



DLP00228



DLP00231



DLP00234



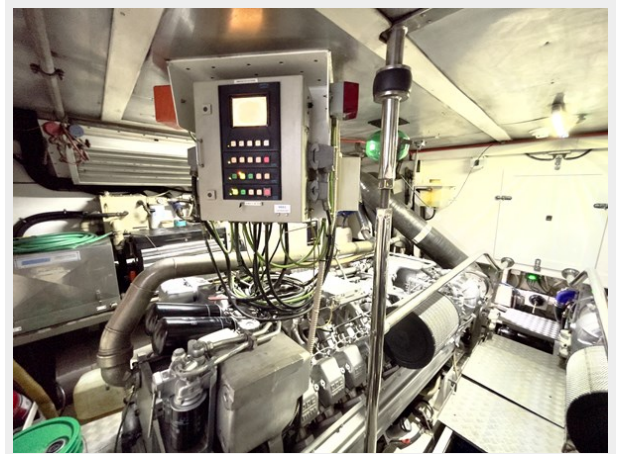
DLP00243



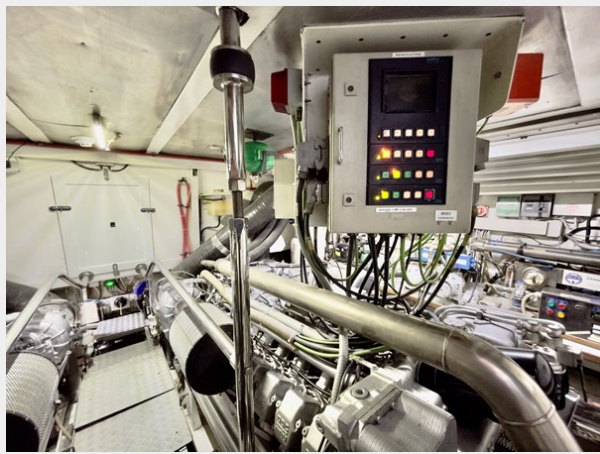
IMG_0757



IMG_0758



IMG_0759



IMG_0760



IMG_0763



IMG_0764



CONTACTS

Andrey Shestakov, leading yacht broker of the sales department of Shestakov Yacht Sales Inc. Shestakov Yacht Sales Inc., the official representative of the Miami/Fort Lauderdale FL headquarters.

Contact details

Email: andrey@shestakovyachtsales.com

Web: shestakovyachtsales.com/en/

Telephones

USA: +1(954)274-4435

Office hours

Monday – Saturday: **9:00 - 21:00** EDT

Sunday: **closed**

Address



Harbour Towne Marina, 850 NE 3rd St,
STE 213, Dania, FL 33004