

BONITA II — SANLORENZO



Builder: SANLORENZO

Year Built: 2014

Model: Cruising Yacht

Price: PRICE ON APPLICATION

Location: Croatia

LOA: 110' 3" (33.6mm)

Beam: 25.13

Min Draft: 7' 3" (2.2mm)

Max Draft: 44' 4" (13.5mm)

Cruise Speed: 12 Knots Kts. (14 MPH)

Max Speed: 19 Knots Kts. (22 MPH)

Our experienced yacht broker, Andrey Shestakov, will help you choose and buy a yacht that best suits your needs **Bonita II — SANLORENZO** from our catalogue. Presently, at Shestakov Yacht Sales Inc., we have a wide variety of yachts available on our sale's list. We also work in close contact with all the big yacht manufacturers from all over the world.

If you would like to buy a yacht **Bonita II — SANLORENZO** or would like help answering any questions concerning purchasing, selling or chartering a yacht, please call **+1(954)274-4435**

TABLE OF CONTENTS

TABLE OF CONTENTS	2
SPECIFICATIONS	4
Basic Information	4
Dimensions	4
Speed, Capacities and Weight	4
Accommodations	4
Hull and Deck Information	5
Engine Information	5
PHOTOS	6
DJI_0045	6
DJI_0110	6
DSC09596	6
DSC09605-2	6
DSC09491-2	6
DSC09521	6
DSC09431-2	7
DSC09441-2	7
DSC09218	7
DSC09265	7
DSC09297	7
DSC08795	7
DSC08912	8
DSC08919	8
DSC09393-2	8
DSC09135	8
DSC09153	8
DSC09173	8
DSC09206	9

DSC09027	9
DSC09004	9
DSC08870	9
DSC08939	9
DSC09522	9
DSC09070	10
DSC09039	10
DSC09405	10
DSC09418	10
DSC09442	10
DSC09424	10
DSC09474	11
DSC09539	11
CONTACTS	12
Contact details	12
Telephones	12
Office hours	12
Address	12

SPECIFICATIONS

Basic Information

Category: Cruising Yacht

Model Year: 2014

Year Built: 2014

Country: Croatia

Dimensions

LOA: 110' 3" (33.6mm)

LWL: 96' 10" (29.5mm)

Beam: 25.13

Min Draft: 7' 3" (2.2mm)

Max Draft: 44' 4" (13.5mm)

Speed, Capacities and Weight

Cruise Speed: 12 Knots Kts. (14 MPH)

Max Speed: 19 Knots Kts. (22 MPH)

Gross Tonnage: 266 Pounds

Water Capacity: 4200 Gallons

Holding Tank: 462.3 Gal Gallons

Fuel Capacity: 7264.73 Gal Gallons

Accommodations

Total Cabins: 4

Total Berths: 4

Total Heads: 8

Crew Cabin: 5

Crew Berths: 3

Hull and Deck Information

Hull Material: GRP

Deck Material: GRP

Hull Configuration: Deep Vee

Hull Color: grey

Hull Designer: Francesco Paszkowski

Engine Information

Engines: 2

Manufacturer: MTU

Engine Type: Inboard

Fuel Type: Diesel

PHOTOS

DJI_0045



DJI_0110



DSC09596



DSC09605-2



DSC09491-2



DSC09521



DSC09441-2



DSC09431-2



DSC09218



DSC09265



DSC09297



DSC08795



DSC08912



DSC08919



DSC09393-2



DSC09135



DSC09153



DSC09173



DSC09206



DSC09027



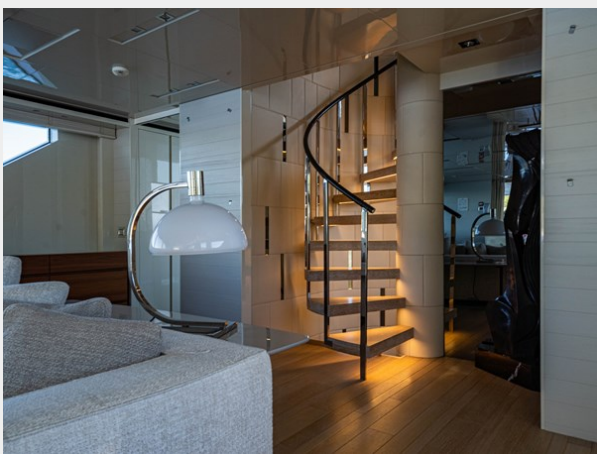
DSC09004



DSC08870



DSC08939



DSC09522



DSC09070



DSC09039



DSC09405



DSC09418



DSC09442



DSC09424



DSC09474



DSC09539



CONTACTS

Andrey Shestakov, leading yacht broker of the sales department of Shestakov Yacht Sales Inc. Shestakov Yacht Sales Inc., the official representative of the Miami/Fort Lauderdale FL headquarters.

Contact details

Email: andrey@shestakovyachtsales.com

Web: shestakovyachtsales.com/en/

Telephones

USA: +1(954)274-4435

Office hours

Monday – Saturday: **9:00 - 21:00** EDT

Sunday: **closed**

Address



Harbour Towne Marina, 850 NE 3rd St,
STE 213, Dania, FL 33004