

## POWER TOOL — SOUTHERN CROSS



**Builder:** SOUTHERN CROSS

**Year Built:** 1986

**Model:** Motor Yacht

**Price:** PRICE ON APPLICATION

**Location:** United States

**LOA:** 53' (16.15mm)

**Beam:** 16

**Max Draft:** 4' (1.22mm)

**Cruise Speed:** 9 Knots Kts. (10 MPH)

**Max Speed:** 17 Knots Kts. (20 MPH)

Our experienced yacht broker, Andrey Shestakov, will help you choose and buy a yacht that best suits your needs **Power Tool — SOUTHERN CROSS** from **our catalogue**. Presently, at **Shestakov Yacht Sales Inc.**, we have a wide variety of yachts available on **our sale's list**. We also work in close contact with all the big **yacht manufacturers** from all over the world.

If you would like to buy a yacht **Power Tool — SOUTHERN CROSS** or would like help answering any questions concerning purchasing, selling or chartering a yacht, please call **+1(954)274-4435**

# TABLE OF CONTENTS

---

|                              |    |
|------------------------------|----|
| TABLE OF CONTENTS            | 2  |
| SPECIFICATIONS               | 5  |
| Overview                     | 5  |
| Basic Information            | 5  |
| Dimensions                   | 5  |
| Speed, Capacities and Weight | 6  |
| Accommodations               | 6  |
| Hull and Deck Information    | 6  |
| Engine Information           | 6  |
| PHOTOS                       | 7  |
| 0_2787018_img_3225           | 7  |
| 1_2787018_img_3223           | 7  |
| 2_2787018_img_3228           | 7  |
| 3_2787018_                   | 7  |
| 4_2787018_                   | 8  |
| 5_2787018_                   | 8  |
| 7_2787018_                   | 8  |
| 6_2787018_                   | 8  |
| 8_2787018_                   | 9  |
| 9_2787018_                   | 9  |
| 11_2787018_                  | 9  |
| 10_2787018_                  | 9  |
| 12_2787018_                  | 10 |
| 13_2787018_                  | 10 |
| 14_2787018_                  | 10 |
| 15_2787018_                  | 10 |
| 16_2787018_                  | 10 |
| 17_2787018_                  | 10 |

---

|             |    |
|-------------|----|
| 18_2787018_ | 11 |
| 19_2787018_ | 11 |
| 20_2787018_ | 11 |
| 21_2787018_ | 11 |
| 22_2787018_ | 11 |
| 23_2787018_ | 11 |
| 24_2787018_ | 12 |
| 25_2787018_ | 12 |
| 26_2787018_ | 12 |
| 27_2787018_ | 12 |
| 28_2787018_ | 12 |
| 29_2787018_ | 12 |
| 31_2787018_ | 13 |
| 30_2787018_ | 13 |
| 32_2787018_ | 13 |
| 33_2787018_ | 13 |
| 34_2787018_ | 14 |
| 35_2787018_ | 14 |
| 36_2787018_ | 14 |
| 37_2787018_ | 14 |
| 38_2787018_ | 15 |
| 39_2787018_ | 15 |
| 40_2787018_ | 15 |
| 41_2787018_ | 15 |
| 42_2787018_ | 16 |
| 43_2787018_ | 16 |
| 44_2787018_ | 16 |
| 45_2787018_ | 16 |
| 46_2787018_ | 17 |

---

---

|                 |    |
|-----------------|----|
| 47_2787018_     | 17 |
| 48_2787018_     | 17 |
| 49_2787018_     | 17 |
| 50_2787018_     | 18 |
| 51_2787018_     | 18 |
| 52_2787018_     | 18 |
| 53_2787018_     | 18 |
| 55_2787018_     | 18 |
| 54_2787018_     | 18 |
| 56_2787018_     | 19 |
| 57_2787018_     | 19 |
| 59_2787018_     | 19 |
| 58_2787018_     | 19 |
| 60_2787018_     | 20 |
| 61_2787018_     | 20 |
| 62_2787018_     | 20 |
| 63_2787018_     | 20 |
| 65_2787018_     | 20 |
| 64_2787018_     | 20 |
| 66_2787018_     | 21 |
| 67_2787018_     | 21 |
| 68_2787018_     | 21 |
| 69_2787018_     | 21 |
| CONTACTS        | 22 |
| Contact details | 22 |
| Telephones      | 22 |
| Office hours    | 22 |
| Address         | 22 |

---

---

# SPECIFICATIONS

---

## Overview

---

### 53 ' Southern Cross Pilothouse Motor Yacht Main Description

Power Tool is a 53' Southern Cross Pilot House Motor Yacht designed by Tom Fexas and built in Australia. This 1986 vessel shows like a much newer boat. She was Awl gripped in 2010, and the most recent owner has done a major overhaul to the electronics, galley, salon, heads and pilot house. Her Detroit diesels have been professionally maintained and her cooling systems were completely removed and cleaned. All new silicone hoses and thermostats were also added. There is stand up head clearance and separate entrance to the large engine room.

The extended flybridge is huge along with the main salon, galley and pilot house all on the same level. Three staterooms, full beam master stateroom, laundry closet, storage closet and 2 en-suite heads on lower level. Beautiful light ash wood through out.

Her tender is a 13' Boston Whaler in mint condition with 40 hp Evinrude E-Tec outboard.

This vessel has been completely gone through and needs nothing. She is competitively priced and wont last long. Let Power Tool take you to the next level.

---

## Basic Information

---

**Category:** Motor Yacht

**Model Year:** 1986

**Year Built:** 1986

**Country:** United States

---

## Dimensions

---

**LOA:** 53' (16.15mm)

**Beam:** 16

**Max Draft:** 4' (1.22mm)

---

## Speed, Capacities and Weight

---

**Cruise Speed:** 9 Knots Kts. (10 MPH)    **Max Speed:** 17 Knots Kts. (20 MPH)

**Water Capacity:** 420 Gallons

**Holding Tank:** 80 Gal Gallons

**Fuel Capacity:** 900 Gal Gallons

---

## Accommodations

---

**Total Cabins:** 3

**Total Heads:** 2

---

## Hull and Deck Information

---

**Hull Material:** Fiberglass

---

## Engine Information

---

**Engines:** 2

**Manufacturer:** Detroit Diesel

**Engine Type:** Inboard

**Fuel Type:** Diesel

# PHOTOS

0\_2787018\_img\_3225



1\_2787018\_img\_3223



2\_2787018\_img\_3228



3\_2787018\_



4\_2787018\_



5\_2787018\_



7\_2787018\_

6\_2787018\_





8\_2787018\_



9\_2787018\_



11\_2787018\_



10\_2787018\_



12\_2787018\_



13\_2787018\_



14\_2787018\_



15\_2787018\_



16\_2787018\_



17\_2787018\_



18\_2787018\_



19\_2787018\_



20\_2787018\_



21\_2787018\_



22\_2787018\_



23\_2787018\_



24\_2787018\_



25\_2787018\_



26\_2787018\_



27\_2787018\_



28\_2787018\_



29\_2787018\_



30\_2787018\_



31\_2787018\_



32\_2787018\_



33\_2787018\_



34\_2787018\_



35\_2787018\_



36\_2787018\_



37\_2787018\_



**38\_2787018\_**



**39\_2787018\_**



**40\_2787018\_**



**41\_2787018\_**



**42\_2787018\_**



**43\_2787018\_**



**44\_2787018\_**



**45\_2787018\_**





**46\_2787018\_**



**47\_2787018\_**



**48\_2787018\_**



**49\_2787018\_**



50\_2787018\_



51\_2787018\_



52\_2787018\_



53\_2787018\_



54\_2787018\_



55\_2787018\_



56\_2787018\_



57\_2787018\_



59\_2787018\_



58\_2787018\_



60\_2787018\_



61\_2787018\_



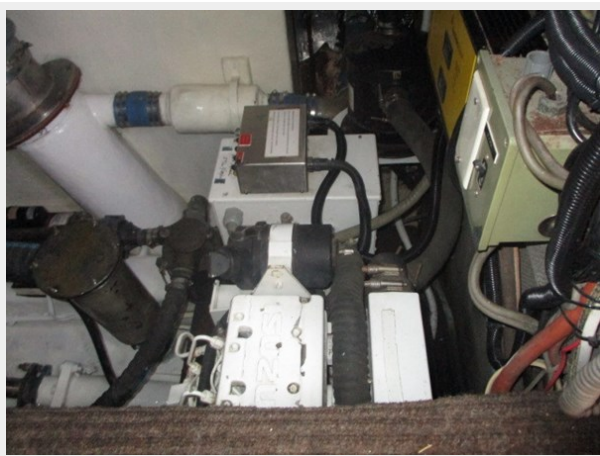
62\_2787018\_



63\_2787018\_



64\_2787018\_



65\_2787018\_



66\_2787018\_



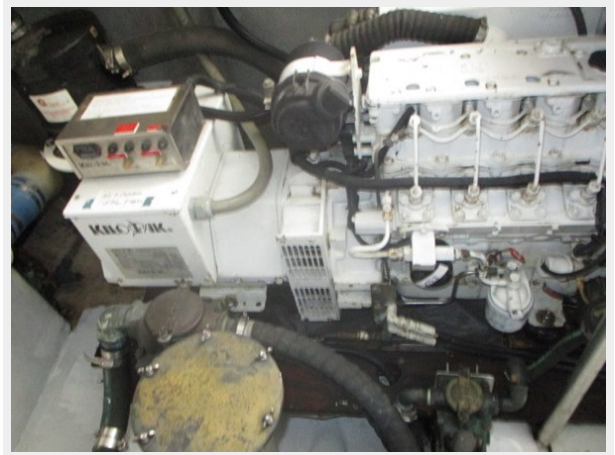
67\_2787018\_



68\_2787018\_



69\_2787018\_



# CONTACTS

---

Andrey Shestakov, leading yacht broker of the sales department of Shestakov Yacht Sales Inc. Shestakov Yacht Sales Inc., the official representative of the Miami/Fort Lauderdale FL headquarters.

## Contact details

---

Email: **andrey@shestakovyachtsales.com**

Web: [shestakovyachtsales.com/en/](http://shestakovyachtsales.com/en/)

## Telephones

---

USA: **+1(954)274-4435**

## Office hours

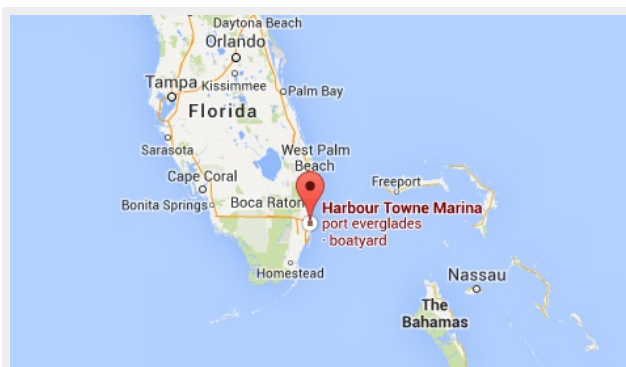
---

Monday – Saturday: **9:00 - 21:00** EDT

Sunday: **closed**

## Address

---



Harbour Towne Marina, 850 NE 3rd St, STE 213, Dania, FL 33004