

TRUE — MAINSHIP



Builder: MAINSHIP

Year Built: 2000

Model: Motor Yacht

Price: PRICE ON APPLICATION

Location: United States

LOA: 42' (12.8mm)

Beam: 15.5

Max Draft: 3' 8" (1.12mm)

Cruise Speed: 9 Knots Kts. (10 MPH)

Max Speed: 15 Knots Kts. (17 MPH)

Our experienced yacht broker, Andrey Shestakov, will help you choose and buy a yacht that best suits your needs **TRUE — MAINSHIP** from our catalogue. Presently, at Shestakov Yacht Sales Inc., we have a wide variety of yachts available on our sale's list. We also work in close contact with all the big yacht manufacturers from all over the world.

If you would like to buy a yacht **TRUE — MAINSHIP** or would like help answering any questions concerning purchasing, selling or chartering a yacht, please call **+1(954)274-4435**

TABLE OF CONTENTS

| | |
|------------------------------------|---|
| TABLE OF CONTENTS | 2 |
| SPECIFICATIONS | 5 |
| Overview | 5 |
| Basic Information | 5 |
| Dimensions | 5 |
| Speed, Capacities and Weight | 5 |
| Accommodations | 5 |
| Hull and Deck Information | 5 |
| Engine Information | 6 |
| PHOTOS | 7 |
| Dockside view from Forward quarter | 7 |
| Bow | 7 |
| Flybridge helm | 7 |
| Lower Helm and bench seat | 7 |
| Lower helm | 7 |
| Above lower helm | 7 |
| Lower helm and galley | 8 |
| Forward windshield | 8 |
| Galley | 8 |
| Freezer under helm bench | 8 |
| Salon | 8 |
| Aft Galley | 8 |
| Salon 2 | 9 |
| Portside salon | 9 |
| Salon looking forward | 9 |
| Salon | 9 |
| Dinette expanded | 9 |
| Salon Chart table - desk | 9 |

| | |
|----------------------------------------------------|----|
| Forward stateroom | 10 |
| Forward hanging locker | 10 |
| V berth forward | 10 |
| Aft view from forward stateroom | 10 |
| Forward stateroom | 10 |
| Forward Head | 10 |
| Forward shower stall | 11 |
| Guest stateroom | 11 |
| Companionway | 11 |
| Guest stateroom hanging locker | 11 |
| Master stateroom | 11 |
| Master stateroom | 11 |
| Master stateroom looking forward | 12 |
| Aft Door from Master Stateroom | 12 |
| Master stateroom | 12 |
| View of head entry in master stateroom | 12 |
| Master head | 12 |
| Master head vanity | 12 |
| Master shower stall | 13 |
| Master stateroom | 13 |
| Aft door open | 13 |
| Aft cocktail area | 13 |
| Fiberglass swim platform | 13 |
| Flybridge | 13 |
| Flybridge helm | 14 |
| Flybridge seating with helm bench backrest forward | 14 |
| Starboard side flybridge seating | 14 |
| Portside flybridge seating | 14 |
| Helm console | 14 |

| | |
|--------------------------------|----|
| Helm bench seat | 14 |
| Bimini top | 15 |
| Signal mast - radar scanner | 15 |
| Washer dryer | 15 |
| Davit | 15 |
| Engine room | 15 |
| Portside engine room aft | 15 |
| Starboard 300 hp Yanmar diesel | 16 |
| Kohler generator | 16 |
| Hatch open above engine room | 16 |
| Flybridge view of foredeck | 16 |
| Pulpit-windlass | 16 |
| Foredeck | 16 |
| Dockside aft | 17 |
| Dockside | 17 |
| CONTACTS | 18 |
| Contact details | 18 |
| Telephones | 18 |
| Office hours | 18 |
| Address | 18 |

SPECIFICATIONS

Overview

N/A

Basic Information

Category: Motor Yacht

Model Year: 2001

Year Built: 2000

Country: United States

Dimensions

LOA: 42' (12.8mm)

LOD: 47' 9" (14.55mm)

Beam: 15.5

Max Draft: 3' 8" (1.12mm)

Speed, Capacities and Weight

Cruise Speed: 9 Knots Kts. (10 MPH)

Max Speed: 15 Knots Kts. (17 MPH)

Water Capacity: 250 Gallons

Holding Tank: 82 Gal Gallons

Fuel Capacity: 500 Gal Gallons

Accommodations

Total Cabins: 3

Sleeps: 5

Total Heads: 2

Hull and Deck Information

Hull Material: Fiberglass

Engine Information

Engines: 1

Manufacturer: Yanmar

PHOTOS

Dockside view from Forward quarter



Bow



Flybridge helm



Lower Helm and bench seat



Lower helm



Above lower helm



Lower helm and galley



Forward windshield



Galley



Freezer under helm bench



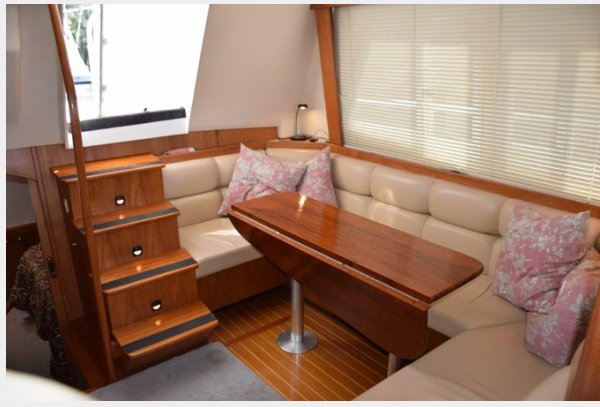
Aft Galley



Salon



Salon 2



Portside salon



Salon



Salon looking forward



Salon Chart table - desk



Dinette expanded



Forward stateroom



Forward hanging locker



V berth forward



Aft view from forward stateroom



Forward stateroom



Forward Head



Forward shower stall



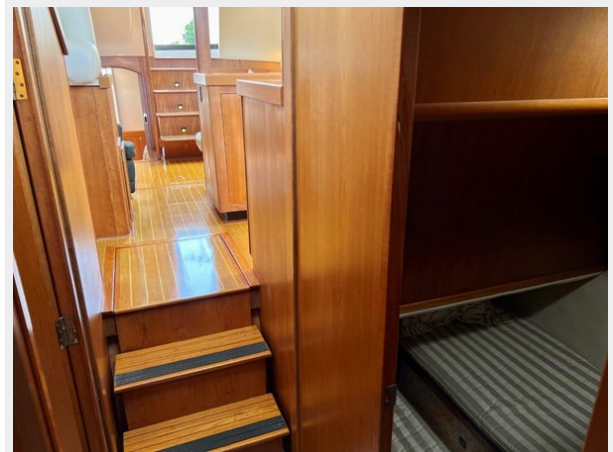
Guest stateroom



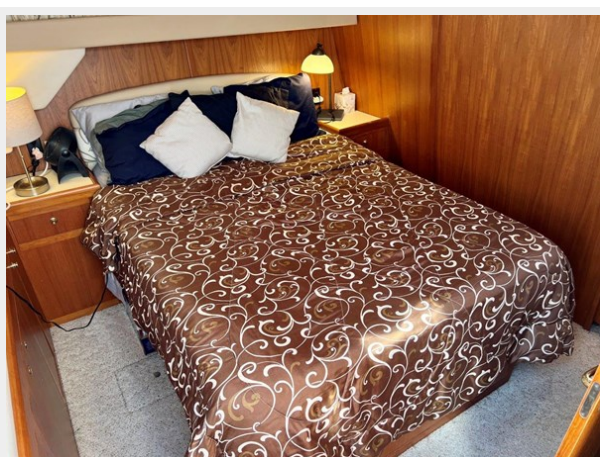
Guest stateroom hanging locker



Companionway



Master stateroom



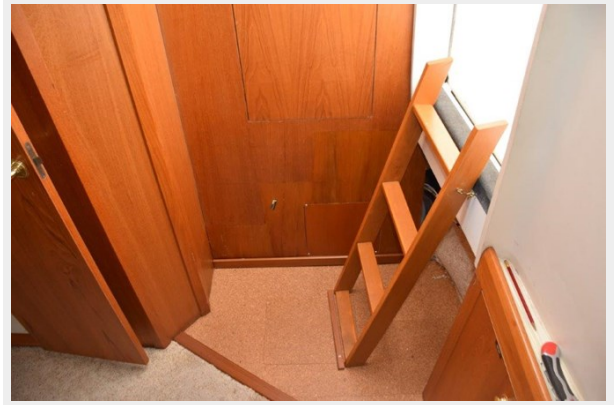
Master stateroom



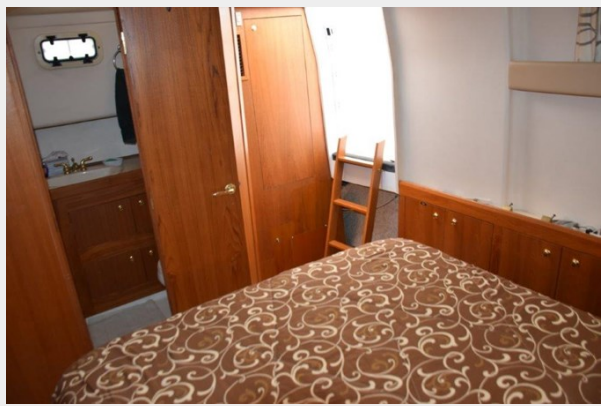
Master stateroom looking forward



Aft Door from Master Stateroom



View of head entry in master stateroom



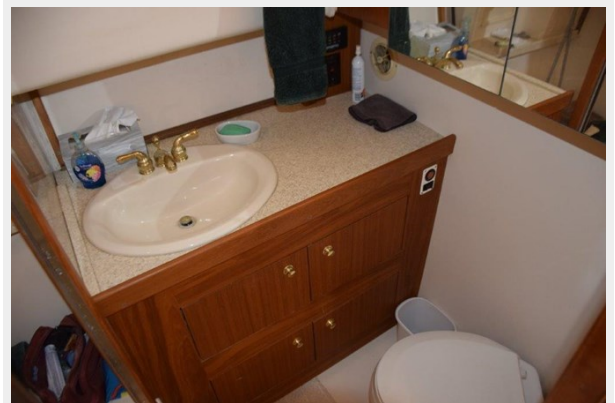
Master stateroom



Master head



Master head vanity



Master shower stall



Master stateroom



Aft door open



Aft cocktail area



Fiberglass swim platform



Flybridge



Flybridge helm



Flybridge seating with helm bench backrest forward



Starboard side flybridge seating



Portside flybridge seating



Helm console



Helm bench seat



Bimini top



Signal mast - radar scanner



Davit



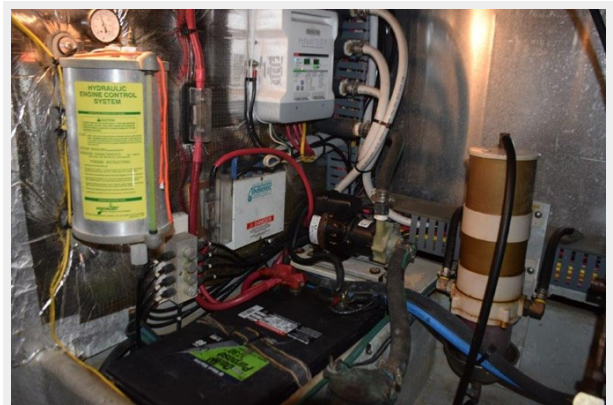
Washer dryer



Engine room



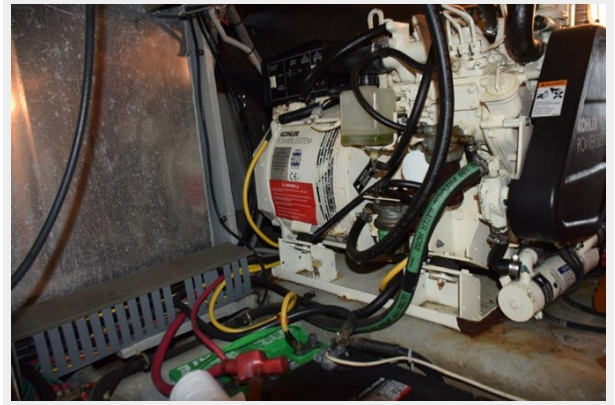
Portside engine room aft



Starboard 300 hp Yanmar diesel



Kohler generator



Hatch open above engine room



Flybridge view of foredeck



Pulpit-windlass



Foredeck



Dockside aft



Dockside



CONTACTS

Andrey Shestakov, leading yacht broker of the sales department of Shestakov Yacht Sales Inc. Shestakov Yacht Sales Inc., the official representative of the Miami/Fort Lauderdale FL headquarters.

Contact details

Email: andrey@shestakovyachtsales.com

Web: shestakovyachtsales.com/en/

Telephones

USA: +1(954)274-4435

Office hours

Monday – Saturday: **9:00 - 21:00** EDT

Sunday: **closed**

Address



Harbour Towne Marina, 850 NE 3rd St,
STE 213, Dania, FL 33004