

BAD ROMANCE 4 — SANLORENZO



Builder: [SANLORENZO](#)

Year Built: 2006

Model: Motor Yacht

Price: PRICE ON APPLICATION

Location: United States

LOA: 108' (32.92mm)

Beam: 23.95

Min Draft: 6' 6" (1.96mm)

Max Draft: 6' 6" (1.96mm)

Cruise Speed: 15 Knots Kts. (17 MPH)

Max Speed: 26 Knots Kts. (30 MPH)

Our experienced yacht broker, Andrey Shestakov, will help you choose and buy a yacht that best suits your needs **Bad Romance 4 — SANLORENZO** from our catalogue. Presently, at Shestakov Yacht Sales Inc., we have a wide variety of yachts available on our sale's list. We also work in close contact with all the big yacht manufacturers from all over the world.

If you would like to buy a yacht **Bad Romance 4 — SANLORENZO** or would like help answering any questions concerning purchasing, selling or chartering a yacht, please call **+1(954)274-4435**

TABLE OF CONTENTS

TABLE OF CONTENTS	2
SPECIFICATIONS	4
Overview	4
Basic Information	4
Dimensions	4
Speed, Capacities and Weight	4
Accommodations	5
Hull and Deck Information	5
Engine Information	5
PHOTOS	6
Salon	6
Dining room	6
Master-cabin	6
VIP	6
Twin-Cabin	6
Double-guest	6
Galley	7
Wheelhouse	7
Sundeck helm station	7
Sundeck	7
Sundeck looking aft	7
Aft Deck	7
Foredeck	8
CONTACTS	9
Contact details	9
Telephones	9
Office hours	9
Address	9

SPECIFICATIONS

Overview

Bad Romance is a hand laid fiberglass constructed 108-foot motor yacht designed and built by Sanlorenzo of Ameglia Italy in 2007. She is a model year 2008, model #SL108.

Basic Information

Category: Motor Yacht

Sub Category: Flybridge

Model Year: 2008

Year Built: 2006

Country: United States

Dimensions

LOA: 108' (32.92mm)

LWL: 95' 2" (29mm)

Beam: 23.95

Min Draft: 6' 6" (1.96mm)

Max Draft: 6' 6" (1.96mm)

Speed, Capacities and Weight

Cruise Speed: 15 Knots Kts. (17 MPH)

Cruise Speed Range: 680

Max Speed: 26 Knots Kts. (30 MPH)

Gross Tonnage: 149 Pounds

Water Capacity: 634 Gallons

Holding Tank: 158 Gal Gallons

Fuel Capacity: 4280 Gal Gallons

Accommodations

Total Cabins: 4

Sleeps: 8

Total Heads: 5

Crew Cabin: 6

Crew Heads: 2

Hull and Deck Information

Hull Material: Fiberglass

Deck Material: Teak

Hull Color: Matterhorn White

Exterior Designer: Franco Della Role

Interior Designer: Susan Kerns

Engine Information

Engines: 2

Manufacturer: MTU

Engine Type: Inboard

Fuel Type: Diesel

PHOTOS

Salon



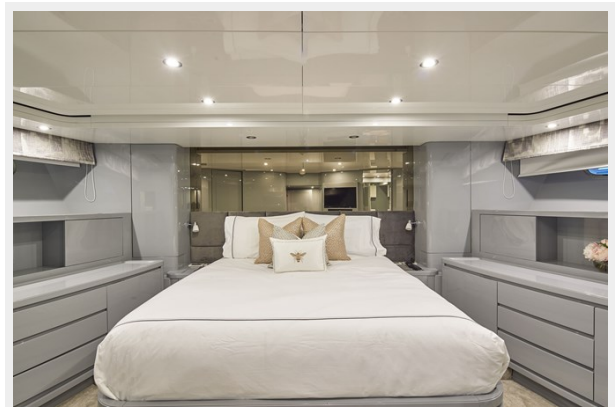
Dining room



Master-cabin



VIP



Twin-Cabin



Double-guest



Galley



Wheelhouse



Sundeck helm station



Sundeck



Sundeck looking aft



Aft Deck



Foredeck



CONTACTS

Andrey Shestakov, leading yacht broker of the sales department of Shestakov Yacht Sales Inc. Shestakov Yacht Sales Inc., the official representative of the Miami/Fort Lauderdale FL headquarters.

Contact details

Email: andrey@shestakovyachtsales.com

Web: shestakovyachtsales.com/en/

Telephones

USA: +1(954)274-4435

Office hours

Monday – Saturday: **9:00 - 21:00** EDT

Sunday: **closed**

Address



Harbour Towne Marina, 850 NE 3rd St,
STE 213, Dania, FL 33004