

INVICTA — SOUTHERN CROSS



Builder: SOUTHERN CROSS

Year Built: 1976

Model: Cruising Sailboat

Price: PRICE ON APPLICATION

Location: United States

LOA: 31' (9.45mm)

Beam: 9.41

Min Draft: 4' 6" (1.37mm)

Our experienced yacht broker, Andrey Shestakov, will help you choose and buy a yacht that best suits your needs **Invicta — SOUTHERN CROSS** from our catalogue. Presently, at Shestakov Yacht Sales Inc., we have a wide variety of yachts available on our sale's list. We also work in close contact with all the big yacht manufacturers from all over the world.

If you would like to buy a yacht **Invicta — SOUTHERN CROSS** or would like help answering any questions concerning purchasing, selling or chartering a yacht, please call **+1(954)274-4435**

TABLE OF CONTENTS

TABLE OF CONTENTS	2
SPECIFICATIONS	4
Overview	4
Basic Information	4
Dimensions	4
Speed, Capacities and Weight	4
Accommodations	5
Hull and Deck Information	5
Engine Information	5
PHOTOS	6
image1-1	6
image2-1	6
image1	6
image2	6
image2-2	7
image0-1	7
image3-1	7
image3	7
IMG_1778	8
IMG_1780	8
IMG_1781	8
IMG_1782	8
IMG_9602	9
CONTACTS	10
Contact details	10
Telephones	10
Office hours	10
Address	10

SPECIFICATIONS

Overview

The Southern Cross 31 is a no nonsense double-ender designed by Tom Gillmer, a professor of naval architecture at the US Naval Academy. The design takes influence from shapes dating back to Colin Archer's work nearly a century earlier, and the hull in many respects is similar the straight transomed Allied Seawind 30, an earlier Gillmer creation notable for being the first fiberglass boat to circumnavigate the globe. (The Allied Seawind 30 was successful enough to be updated to the Allied Seawind II)

She's a full keeled sailboat with an outboard rudder and tiller combo, a configuration often praised for its simplicity and the cockpit is quite small, suitable for ocean passages. The cutter rig with bowsprit has 447 sq. ft. of canvas, plenty for its displacement, but being a heavy displacement boat performance is hampered in light airs. Looking on the bright side, the weight gains dividends with a comfortable motion while underway.

(From Blue Water Boats.com)

Basic Information

Category: Cruising Sailboat

Model Year: 1976

Year Built: 1976

Country: United States

Dimensions

LOA: 31' (9.45mm)

Beam: 9.41

Min Draft: 4' 6" (1.37mm)

Speed, Capacities and Weight

Water Capacity: 47 Gallons

Holding Tank: 10 Gal Gallons

Fuel Capacity: 34 Gal Gallons

Accommodations

Total Cabins: 1

Hull and Deck Information

Hull Material: Fiberglass

Hull Configuration: Long Keel

Engine Information

Engines: 2

Manufacturer: westerbeke

PHOTOS

image1-1



image2-1



image1



image2



image0-1



image2-2



image3-1

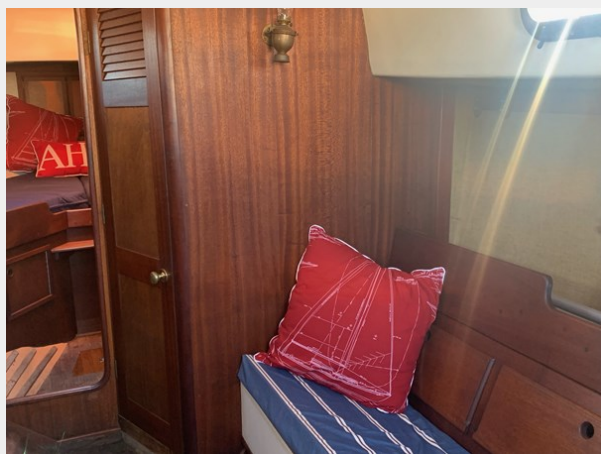


image3



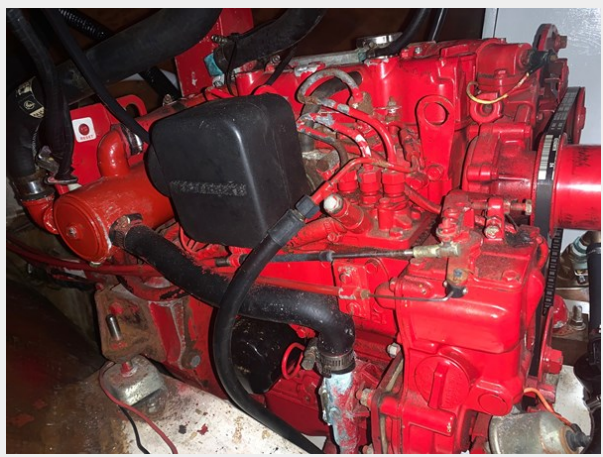
IMG_1778



IMG_1780



IMG_1781



IMG_1782



IMG_9602



CONTACTS

Andrey Shestakov, leading yacht broker of the sales department of Shestakov Yacht Sales Inc. Shestakov Yacht Sales Inc., the official representative of the Miami/Fort Lauderdale FL headquarters.

Contact details

Email: andrey@shestakovyachtsales.com

Web: shestakovyachtsales.com/en/

Telephones

USA: +1(954)274-4435

Office hours

Monday – Saturday: **9:00 - 21:00** EDT

Sunday: **closed**

Address



Harbour Towne Marina, 850 NE 3rd St,
STE 213, Dania, FL 33004