

## XTSEA — SEA RAY



**Builder:** SEA RAY

**Year Built:** 2002

**Model:** Cruising Yacht

**Price:** PRICE ON APPLICATION

**Location:** United States

**LOA:** 46' (14.02mm)

**Beam:** 14.66

**Max Draft:** 3' 7" (1.09mm)

**Cruise Speed:** 22 Knots Kts. (25 MPH)

**Max Speed:** 29 Knots Kts. (33 MPH)

Our experienced yacht broker, Andrey Shestakov, will help you choose and buy a yacht that best suits your needs XTSEA — SEA RAY from our catalogue. Presently, at Shestakov Yacht Sales Inc., we have a wide variety of yachts available on our sale's list. We also work in close contact with all the big yacht manufacturers from all over the world.

If you would like to buy a yacht XTSEA — SEA RAY or would like help answering any questions concerning purchasing, selling or chartering a yacht, please call +1(954)274-4435

# TABLE OF CONTENTS

TABLE OF CONTENTS	2
SPECIFICATIONS	5
Overview	5
Basic Information	5
Dimensions	5
Speed, Capacities and Weight	5
Accommodations	5
Hull and Deck Information	6
Engine Information	6
PHOTOS	7
1_2787360_	7
0_2787360_	7
2_2787360_	7
3_2787360_	7
4_2787360_	7
5_2787360_	7
6_2787360_	8
7_2787360_	8
8_2787360_	8
9_2787360_	8
10_2787360_	8
11_2787360_	8
12_2787360_	9
13_2787360_	9
14_2787360_	9
15_2787360_	9
16_2787360_	9
17_2787360_	9

18_2787360_	10
19_2787360_	10
20_2787360_	10
21_2787360_	10
22_2787360_	10
23_2787360_	10
24_2787360_	11
25_2787360_	11
26_2787360_	11
27_2787360_	11
28_2787360_	11
29_2787360_	11
30_2787360_	12
31_2787360_	12
32_2787360_	12
33_2787360_	12
34_2787360_	12
35_2787360_	12
36_2787360_	13
37_2787360_	13
38_2787360_	13
39_2787360_	13
40_2787360_	13
41_2787360_	13
42_2787360_	14
43_2787360_	14
44_2787360_	14
45_2787360_	14
46_2787360_	14

---

47_2787360_	14
48_2787360_	15
49_2787360_	15
50_2787360_	15
51_2787360_	15
52_2787360_	15
53_2787360_	15
54_2787360_	16
55_2787360_	16
57_2787360_	16
56_2787360_	16
58_2787360_	16
59_2787360_	16
61_2787360_	17
60_2787360_	17
63_2787360_	17
62_2787360_	17
64_2787360_	18
CONTACTS	19
Contact details	19
Telephones	19
Office hours	19
Address	19

---

# SPECIFICATIONS

---

## Overview

---

The Sundancer "XTSEA" 460 is **all about entertaining and cruising, and the swim platform supports both activities**. The platform comes standard with a fiberglass no-slip surface, concealed reboarding ladder, and is extended for added functionality. The "XTSEA" swim platform is upgraded, as in the cockpit with teak looking no slip material.

## Basic Information

---

**Category:** Cruising Yacht

**Sub Category:** Express

**Model Year:** 2002

**Year Built:** 2002

**Country:** United States

## Dimensions

---

**LOA:** 46' (14.02mm)

**Beam:** 14.66

**Max Draft:** 3' 7" (1.09mm)

## Speed, Capacities and Weight

---

**Cruise Speed:** 22 Knots Kts. (25 MPH)

**Max Speed:** 29 Knots Kts. (33 MPH)

**Water Capacity:** 160 Gallons

**Holding Tank:** 42 Gal Gallons

**Fuel Capacity:** 400 Gal Gallons

## Accommodations

---

**Total Cabins:** 2

**Total Heads:** 2

---

## Hull and Deck Information

---

**Hull Material:** Fiberglass

---

## Engine Information

---

**Engines:** 2

**Manufacturer:** Cummins

**Engine Type:** Inboard

**Fuel Type:** Diesel

# PHOTOS

0\_2787360\_



1\_2787360\_



2\_2787360\_



3\_2787360\_



4\_2787360\_



5\_2787360\_





6\_2787360\_



7\_2787360\_



8\_2787360\_



9\_2787360\_



10\_2787360\_



11\_2787360\_





12\_2787360\_



13\_2787360\_



14\_2787360\_



15\_2787360\_



16\_2787360\_



17\_2787360\_



18\_2787360\_



19\_2787360\_



20\_2787360\_



21\_2787360\_



22\_2787360\_

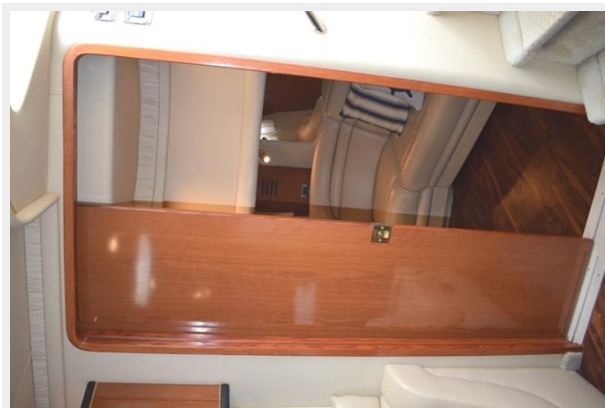


23\_2787360\_





24\_2787360\_



25\_2787360\_



26\_2787360\_



27\_2787360\_



28\_2787360\_



29\_2787360\_



30\_2787360\_



31\_2787360\_



32\_2787360\_



33\_2787360\_



34\_2787360\_



35\_2787360\_





36\_2787360\_



37\_2787360\_



38\_2787360\_



39\_2787360\_



40\_2787360\_



41\_2787360\_



42\_2787360\_



43\_2787360\_



44\_2787360\_



45\_2787360\_



46\_2787360\_



47\_2787360\_





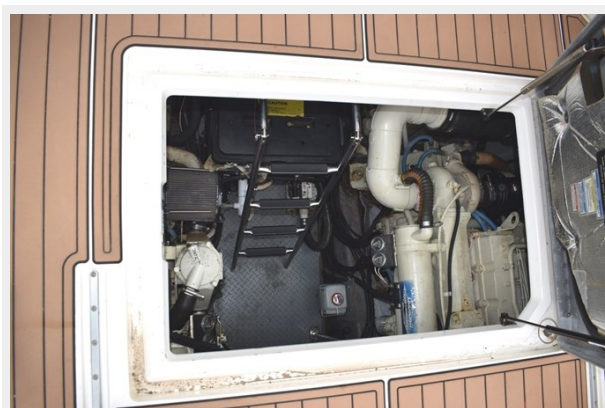
48\_2787360\_



49\_2787360\_



50\_2787360\_



51\_2787360\_



52\_2787360\_



53\_2787360\_



54\_2787360\_



55\_2787360\_



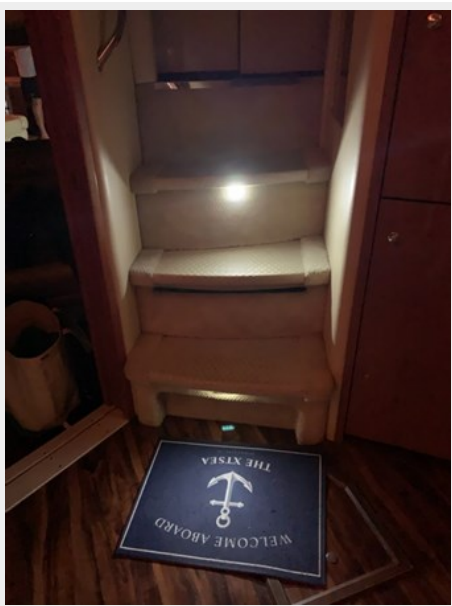
56\_2787360\_



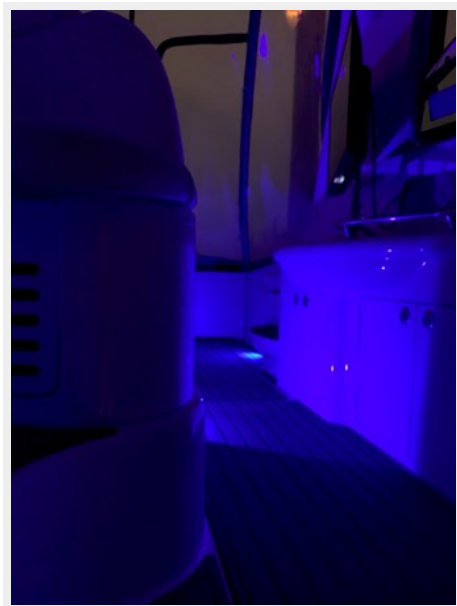
57\_2787360\_



58\_2787360\_



59\_2787360\_

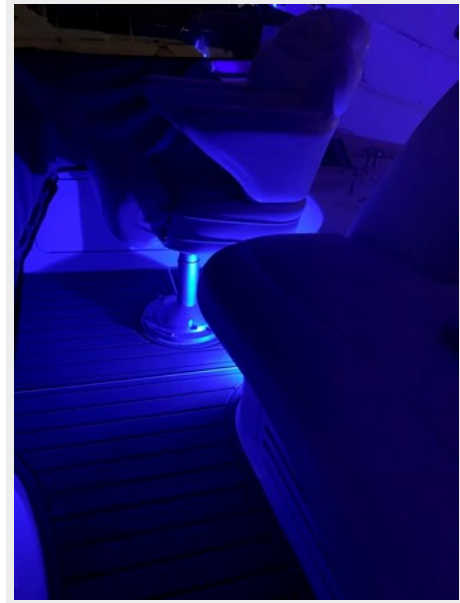




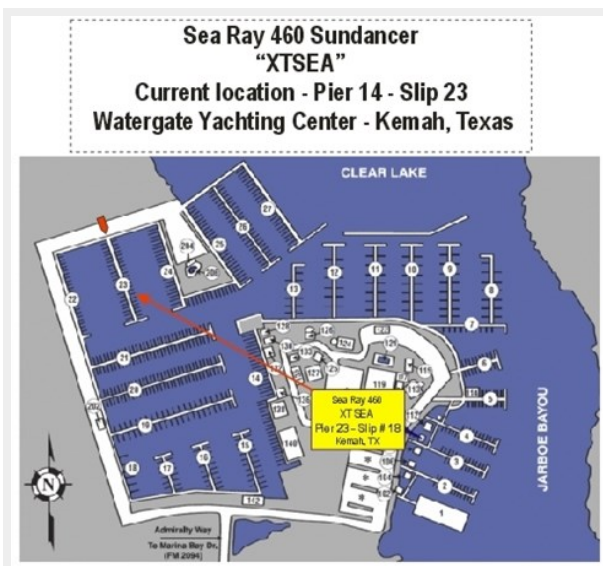
60\_2787360\_



61\_2787360\_



62\_2787360\_



63\_2787360\_



64\_2787360\_



---

# CONTACTS

---

Andrey Shestakov, leading yacht broker of the sales department of Shestakov Yacht Sales Inc. Shestakov Yacht Sales Inc., the official representative of the Miami/Fort Lauderdale FL headquarters.

---

## Contact details

---

Email: [andrey@shestakovyachtsales.com](mailto:andrey@shestakovyachtsales.com)

Web: [shestakovyachtsales.com/en/](http://shestakovyachtsales.com/en/)

---

## Telephones

---

USA: +1(954)274-4435

---

## Office hours

---

Monday – Saturday: **9:00 - 21:00** EDT

Sunday: **closed**

---

## Address

---



Harbour Towne Marina, 850 NE 3rd St,  
STE 213, Dania, FL 33004