

## BEATRICE — OCEAN ALEXANDER



**Builder:** OCEAN ALEXANDER

**Year Built:** 1996

**Model:** Trawler Yacht

**Price:** PRICE ON APPLICATION

**Location:** United States

**LOA:** 42' (12.8mm)

**Beam:** 14.66

**Min Draft:** 4' (1.22mm)

**Max Draft:** 4' (1.22mm)

**Cruise Speed:** 9 Knots Kts. (10 MPH)

**Max Speed:** 15 Knots Kts. (17 MPH)

Our experienced yacht broker, Andrey Shestakov, will help you choose and buy a yacht that best suits your needs **Beatrice — OCEAN ALEXANDER** from our catalogue. Presently, at Shestakov Yacht Sales Inc., we have a wide variety of yachts available on our sale's list. We also work in close contact with all the big yacht manufacturers from all over the world.

If you would like to buy a yacht **Beatrice — OCEAN ALEXANDER** or would like help answering any questions concerning purchasing, selling or chartering a yacht, please call **+1(954)274-4435**

# TABLE OF CONTENTS

TABLE OF CONTENTS	2
SPECIFICATIONS	5
Overview	5
Basic Information	5
Dimensions	5
Speed, Capacities and Weight	5
Accommodations	5
Hull and Deck Information	5
Engine Information	5
PHOTOS	6
2_2787362_42_ocean_alexander_starboard_aft_profile	6
0_2787362_42_ocean_alexander_starboard_forward_profile	6
3_2787362_42_ocean_alexander_port_aft_profile	6
4_2787362_42_ocean_alexander_aft_profile	6
5_2787362_42_ocean_alexander_anchor_windlass	6
6_2787362_42_ocean_alexander_foredeck1	6
7_2787362_42_ocean_alexander_foredeck2	6
8_2787362_42_ocean_alexander_foredeck_aft	6
9_2787362_42_ocean_alexander_port_side_deck1	7
10_2787362_42_ocean_alexander_port_side_deck2	7
11_2787362_42_ocean_alexander_starboard_side_deck1	7
12_2787362_42_ocean_alexander_starboard_side_deck2	7
13_2787362_42_ocean_alexander_flybridge	7
14_2787362_42_ocean_alexander_flybridgeaft	7
15_2787362_42_ocean_alexander_flybridge_port	7
16_2787362_42_ocean_alexander_flybridge_starboard	7
17_2787362_42_ocean_alexander_flybridge_helm	8
18_2787362_42_ocean_alexander_helmseats	8

---

19_2787362_42_ocean_alexander_flybridge_seating	8
20_2787362_42_ocean_alexander_trunk_cabin	8
22_2787362_42_ocean_alexander_tender_outboard	8
21_2787362_42_ocean_alexander_tender	8
23_2787362_42_ocean_alexander_tender_davit	8
24_2787362_42_ocean_alexander_aftdeck	8
25_2787362_42_ocean_alexander_aftdeck_port	9
26_2787362_42_ocean_alexander_aftdeck_starboard	9
27_2787362_42_ocean_alexander_swimplatform	9
28_2787362_42_ocean_alexander_salon_forward	9
29_2787362_42_ocean_alexander_salon_aft	9
30_2787362_42_ocean_alexander_salon_port	9
31_2787362_42_ocean_alexander_salon_starboard	9
32_2787362_42_ocean_alexander_salon_starboard_seating	9
33_2787362_42_ocean_alexander_salon_port_seating	10
34_2787362_42_ocean_alexander_lower_helm	10
35_2787362_42_ocean_alexander_galley1	10
36_2787362_42_ocean_alexander_galley2	10
37_2787362_42_ocean_alexander_galley3	10
38_2787362_42_ocean_alexander_master_stateroom	10
39_2787362_42_ocean_alexander_master_stateroom_port	10
40_2787362_42_ocean_alexander_master_stateroom_starboard	10
41_2787362_42_ocean_alexander_master_stateroom_port_aft	11
42_2787362_42_ocean_alexander_master_stateroom_forward	11
43_2787362_42_ocean_alexander_master_stateroom_head	11
44_2787362_42_ocean_alexander_guest_stateroom	11
45_2787362_42_ocean_alexander_guest_stateroom_port	11
46_2787362_42_ocean_alexander_guest_stateroom_starboard	11
47_2787362_42_ocean_alexander_guest_stateroom_head	11

---

---

48_2787362_42_ocean_alexander_guest_stateroom_shower	11
49_2787362_42_ocean_alexander_engine_room_forward	12
50_2787362_42_ocean_alexander_engine_room_aft	12
51_2787362_42_ocean_alexander_port_main_engine	12
52_2787362_42_ocean_alexander_starboard_main_engine	12
54_2787362_42_ocean_alexander_water_heater	12
53_2787362_42_ocean_alexander_racor_fuel_filters	12
55_2787362_42_ocean_alexander_electrical_panel	12
56_2787362_42_ocean_alexander_generator_sound_box	12
57_2787362_42_ocean_alexander_generator	13
58_2787362_42_ocean_alexander_battery_chargers	13
CONTACTS	14
Contact details	14
Telephones	14
Office hours	14
Address	14

---

## SPECIFICATIONS

---

### Overview

---

Beatrice is a 1996 42' Ocean Alexander in good condition. She offers twin Caterpillar 3208 210 HP naturally aspirated main engines, Onan 8 kW generator, Smart Plug shore power connections, Avon 9' RIB tender with a new Mercury 6 HP outboard and a 2 stateroom, 2 head layout with an enclosed shower in each head. Beatrice is a Great Loop veteran.

### Basic Information

---

<b>Category:</b> Trawler Yacht	<b>Model Year:</b> 1996
<b>Year Built:</b> 1996	<b>Country:</b> United States

### Dimensions

---

<b>LOA:</b> 42' (12.8mm)	<b>Beam:</b> 14.66
<b>Min Draft:</b> 4' (1.22mm)	<b>Max Draft:</b> 4' (1.22mm)

### Speed, Capacities and Weight

---

<b>Cruise Speed:</b> 9 Knots Kts. (10 MPH)	<b>Max Speed:</b> 15 Knots Kts. (17 MPH)
<b>Water Capacity:</b> 160 Gallons	<b>Holding Tank:</b> 60 Gal Gallons
<b>Fuel Capacity:</b> 600 Gal Gallons	

### Accommodations

---

<b>Total Cabins:</b> 2	<b>Sleeps:</b> 4
<b>Total Heads:</b> 2	

### Hull and Deck Information

---

**Hull Material:** Fiberglass

### Engine Information

---

<b>Engines:</b> 2	<b>Manufacturer:</b> Caterpillar
<b>Engine Type:</b> Inboard	<b>Fuel Type:</b> Diesel

# PHOTOS

2\_2787362\_42\_ocean\_alexander\_starboard\_aft\_profile



0\_2787362\_42\_ocean\_alexander\_starboard\_forward\_profile



3\_2787362\_42\_ocean\_alexander\_port\_apt\_profile



4\_2787362\_42\_ocean\_alexander\_apt\_profile



5\_2787362\_42\_ocean\_alexander\_anchor\_windlass



6\_2787362\_42\_ocean\_alexander\_foredeck1



7\_2787362\_42\_ocean\_alexander\_foredeck2



8\_2787362\_42\_ocean\_alexander\_foredeck\_apt



9\_2787362\_42\_ocean\_alexander\_port\_side\_deck1



10\_2787362\_42\_ocean\_alexander\_port\_side\_deck2



11\_2787362\_42\_ocean\_alexander\_starboard\_side\_deck1



12\_2787362\_42\_ocean\_alexander\_starboard\_side\_deck2



13\_2787362\_42\_ocean\_alexander\_flybridge



14\_2787362\_42\_ocean\_alexander\_flybridgeaft



15\_2787362\_42\_ocean\_alexander\_flybridge\_port



16\_2787362\_42\_ocean\_alexander\_flybridge\_starboard



17\_2787362\_42\_ocean\_alexander\_flybridge\_helm



18\_2787362\_42\_ocean\_alexander\_helmseats



19\_2787362\_42\_ocean\_alexander\_flybridge\_seating



20\_2787362\_42\_ocean\_alexander\_trunk\_cabin



21\_2787362\_42\_ocean\_alexander\_tender



22\_2787362\_42\_ocean\_alexander\_tender\_outboard



23\_2787362\_42\_ocean\_alexander\_tender\_davit



24\_2787362\_42\_ocean\_alexander\_aftdeck





25\_2787362\_42\_ocean\_alexander\_aftdeck\_port



26\_2787362\_42\_ocean\_alexander\_aftdeck\_starboard



27\_2787362\_42\_ocean\_alexander\_swimplatform



28\_2787362\_42\_ocean\_alexander\_salon\_forward



29\_2787362\_42\_ocean\_alexander\_salon\_aft



30\_2787362\_42\_ocean\_alexander\_salon\_port



31\_2787362\_42\_ocean\_alexander\_salon\_starboard



32\_2787362\_42\_ocean\_alexander\_salon\_starboard\_seating



33\_2787362\_42\_ocean\_alexander\_salon\_port\_seating



34\_2787362\_42\_ocean\_alexander\_lower\_helm



35\_2787362\_42\_ocean\_alexander\_galley1



36\_2787362\_42\_ocean\_alexander\_galley2



37\_2787362\_42\_ocean\_alexander\_galley3



38\_2787362\_42\_ocean\_alexander\_master\_stateroom



39\_2787362\_42\_ocean\_alexander\_master\_stateroom\_port 40\_2787362\_42\_ocean\_alexander\_master\_stateroom\_starboard



41\_2787362\_42\_ocean\_alexander\_master\_stateroom\_port\_aft 42\_2787362\_42\_ocean\_alexander\_master\_stateroom\_forward



43\_2787362\_42\_ocean\_alexander\_master\_stateroom\_head



44\_2787362\_42\_ocean\_alexander\_guest\_stateroom



45\_2787362\_42\_ocean\_alexander\_guest\_stateroom\_port 46\_2787362\_42\_ocean\_alexander\_guest\_stateroom\_starboard



47\_2787362\_42\_ocean\_alexander\_guest\_stateroom\_head 48\_2787362\_42\_ocean\_alexander\_guest\_stateroom\_shower



49\_2787362\_42\_ocean\_alexander\_engine\_room\_forward



50\_2787362\_42\_ocean\_alexander\_engine\_room\_aft



51\_2787362\_42\_ocean\_alexander\_port\_main\_engine



52\_2787362\_42\_ocean\_alexander\_starboard\_main\_engine



54\_2787362\_42\_ocean\_alexander\_water\_heater



53\_2787362\_42\_ocean\_alexander\_racor\_fuel\_filters



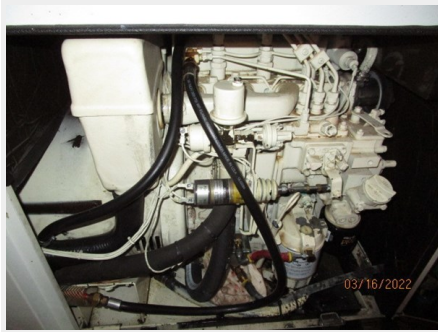
55\_2787362\_42\_ocean\_alexander\_electrical\_panel



56\_2787362\_42\_ocean\_alexander\_generator\_sound\_box



57\_2787362\_42\_ocean\_alexander\_generator



58\_2787362\_42\_ocean\_alexander\_battery\_chargers



## CONTACTS

---

Andrey Shestakov, leading yacht broker of the sales department of Shestakov Yacht Sales Inc. Shestakov Yacht Sales Inc., the official representative of the Miami/Fort Lauderdale FL headquarters.

### Contact details

---

Email:  
[andrey@shestakovyachtsales.com](mailto:andrey@shestakovyachtsales.com)

Web: [shestakovyachtsales.com/en/](http://shestakovyachtsales.com/en/)

### Telephones

---

USA: +1(954)274-4435

### Office hours

---

Monday – Saturday: **9:00 - 21:00** EDT

Sunday: **closed**

### Address

---



Harbour Towne Marina, 850 NE 3rd St,  
STE 213, Dania, FL 33004