

REDEMPTION — BENETEAU



Builder: BENETEAU

Year Built: 1994

Model: Sloop

Price: PRICE ON APPLICATION

Location: United States

LOA: 35' (10.67mm)

Beam: 12.41

Max Draft: 5' (1.52mm)

Our experienced yacht broker, Andrey Shestakov, will help you choose and buy a yacht that best suits your needs **Redemption — BENETEAU** from our catalogue. Presently, at Shestakov Yacht Sales Inc., we have a wide variety of yachts available on our sale's list. We also work in close contact with all the big yacht manufacturers from all over the world.

If you would like to buy a yacht **Redemption — BENETEAU** or would like help answering any questions concerning purchasing, selling or chartering a yacht, please call **+1(954)274-4435**

TABLE OF CONTENTS

| | |
|------------------------------|----|
| TABLE OF CONTENTS | 2 |
| SPECIFICATIONS | 6 |
| Overview | 6 |
| Basic Information | 6 |
| Dimensions | 6 |
| Speed, Capacities and Weight | 7 |
| Accommodations | 7 |
| Hull and Deck Information | 7 |
| Engine Information | 7 |
| PHOTOS | 8 |
| 1_2787422_ | 8 |
| 2_2787422_ | 8 |
| 3_2787422_ | 8 |
| 4_2787422_ | 8 |
| 5_2787422_ | 9 |
| 6_2787422_ | 9 |
| 7_2787422_ | 9 |
| 8_2787422_ | 9 |
| 9_2787422_ | 10 |
| 10_2787422_ | 10 |
| 12_2787422_ | 10 |
| 11_2787422_ | 10 |
| 13_2787422_ | 11 |
| 14_2787422_ | 11 |
| 16_2787422_ | 11 |
| 15_2787422_ | 11 |
| 17_2787422_ | 12 |
| 18_2787422_ | 12 |

| | |
|-------------|----|
| 19_2787422_ | 12 |
| 20_2787422_ | 12 |
| 21_2787422_ | 13 |
| 22_2787422_ | 13 |
| 24_2787422_ | 13 |
| 23_2787422_ | 13 |
| 25_2787422_ | 14 |
| 26_2787422_ | 14 |
| 27_2787422_ | 14 |
| 28_2787422_ | 14 |
| 30_2787422_ | 14 |
| 29_2787422_ | 14 |
| 32_2787422_ | 15 |
| 31_2787422_ | 15 |
| 33_2787422_ | 15 |
| 34_2787422_ | 15 |
| 35_2787422_ | 15 |
| 36_2787422_ | 15 |
| 37_2787422_ | 16 |
| 38_2787422_ | 16 |
| 39_2787422_ | 16 |
| 40_2787422_ | 16 |
| 41_2787422_ | 17 |
| 42_2787422_ | 17 |
| 43_2787422_ | 17 |
| 44_2787422_ | 17 |
| 45_2787422_ | 18 |
| 46_2787422_ | 18 |
| 47_2787422_ | 18 |

| | |
|-------------|----|
| 48_2787422_ | 18 |
| 49_2787422_ | 19 |
| 50_2787422_ | 19 |
| 51_2787422_ | 19 |
| 52_2787422_ | 19 |
| 53_2787422_ | 20 |
| 54_2787422_ | 20 |
| 55_2787422_ | 20 |
| 56_2787422_ | 20 |
| 57_2787422_ | 21 |
| 58_2787422_ | 21 |
| 60_2787422_ | 21 |
| 59_2787422_ | 21 |
| 61_2787422_ | 22 |
| 62_2787422_ | 22 |
| 64_2787422_ | 22 |
| 63_2787422_ | 22 |
| 65_2787422_ | 23 |
| 66_2787422_ | 23 |
| 67_2787422_ | 23 |
| 68_2787422_ | 23 |
| 69_2787422_ | 24 |
| 70_2787422_ | 24 |
| 71_2787422_ | 24 |
| 72_2787422_ | 24 |
| 73_2787422_ | 25 |
| 74_2787422_ | 25 |
| 76_2787422_ | 25 |
| 75_2787422_ | 25 |

| | |
|-----------------|----|
| CONTACTS | 26 |
| Contact details | 26 |
| Telephones | 26 |
| Office hours | 26 |
| Address | 26 |

SPECIFICATIONS

Overview

SV Redemption spent the bulk of her life sailing the Chesapeake Bay, which has a short season of only five or six months per year; she has been sailing to Florida and the Florida Keys for the last few winters. She was updated in 2017 and again in 2019 for long-range cruising by the current owner. The bright white gelcoat and beautiful woodwork reflect their pride of ownership. With two large cabins, *Redemption* is perfect for two couples or a family of four.

Beneteau describes their Oceanis line as “blue water cruisers” which have “set the standard for sailboat design and construction.” Designed by Jean Berret and Phillippe Briand and produced by Beneteau between 1992 and 1997 the Oceanis 351/352 has sleek lines which offer fast and efficient sailing and cruising, as well as comfortable living space for short-term or long-term adventures. Considered particularly beamy at the time of its launch, the Oceanis quickly became known as “a comfortable family boat that is fun to sail.” The innovations of the Oceanis line include: a winged keel, a shallow bilge, slippery underwater sections and a lengthy waterline.

Despite more conservative estimates from her manufacturer, *Redemption* easily reaches an impressive 7+ knots in good wind (highest speed by owner is 8.6kts). She shares her hull with the Beneteau First 35.7, and her maximum waterline length and wide beam make for excellent stability in all weathers. In rough seas and strong winds, the Oceanis 351 has a good solid feel. The slab sided Dutchan and Lazy jacked main with roller-furling genoa make for nice easy rigging and this is a yacht that makes for easy and safe light or short-handed sailing.

A CE Class A Ocean Rated Vessel, *Redemption* is truly ready for a new owner to take her to new horizons.

Basic Information

Category: Sloop

Model Year: 1994

Year Built: 1994

Country: United States

Dimensions

LOA: 35' (10.67mm)

Beam: 12.41

Max Draft: 5' (1.52mm)

Speed, Capacities and Weight

Water Capacity: 106 Gallons

Holding Tank: 20 Gal Gallons

Fuel Capacity: 24 Gal Gallons

Accommodations

Total Cabins: 2

Total Heads: 1

Hull and Deck Information

Hull Material: Fiberglass

Engine Information

Engines: 1

Manufacturer: Perkins

Engine Type: Inboard

Fuel Type: Diesel

PHOTOS

1_2787422_



2_2787422_



3_2787422_



4_2787422_



5_2787422_



6_2787422_



7_2787422_



8_2787422_



9_2787422_



10_2787422_



11_2787422_



12_2787422_



13_2787422_



14_2787422_



16_2787422_

15_2787422_



17_2787422_



18_2787422_



19_2787422_



20_2787422_



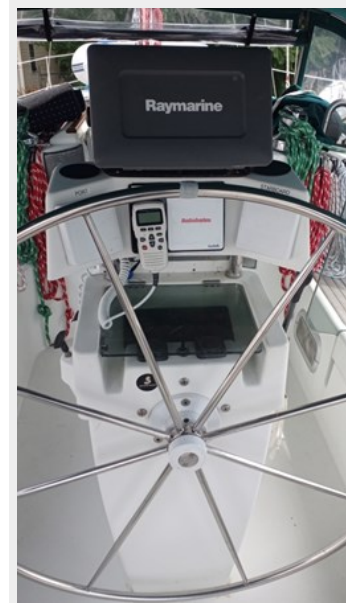
21_2787422_



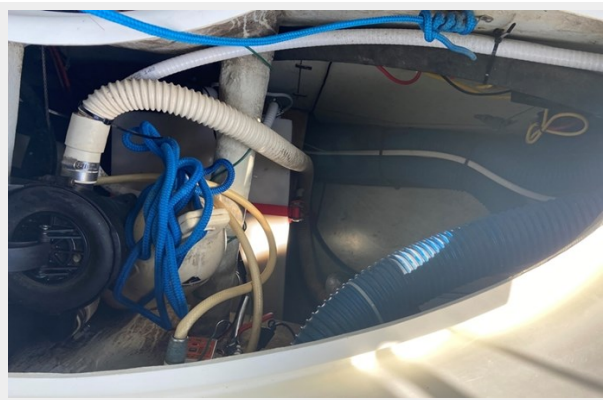
22_2787422_



24_2787422_



23_2787422_



25_2787422_



26_2787422_



27_2787422_



28_2787422_



29_2787422_



30_2787422_



31_2787422_



32_2787422_



33_2787422_



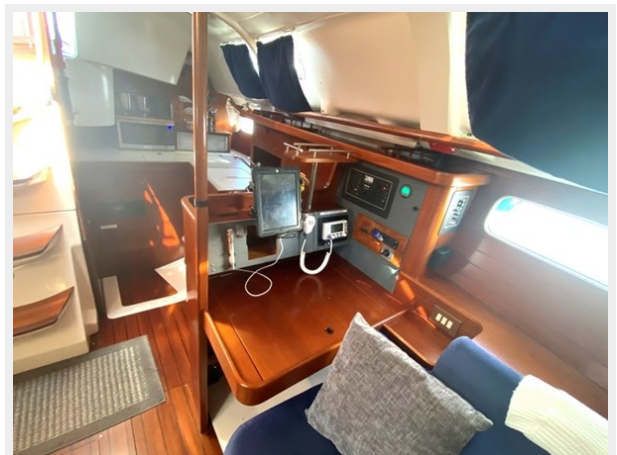
34_2787422_



35_2787422_



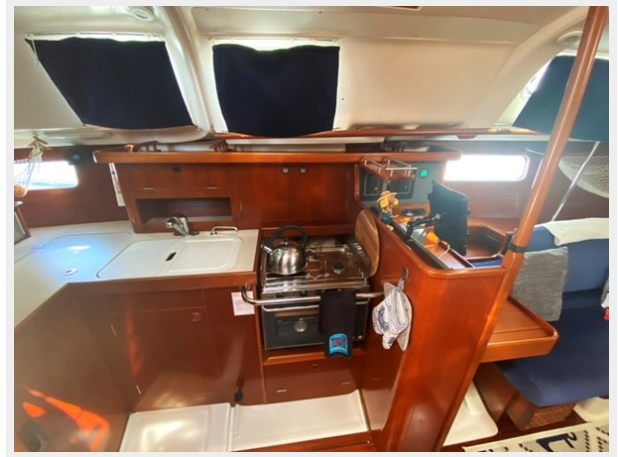
36_2787422_



37_2787422_



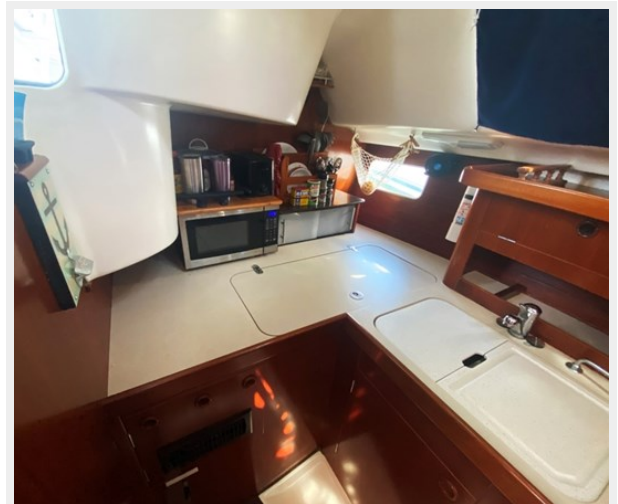
38_2787422_



39_2787422_



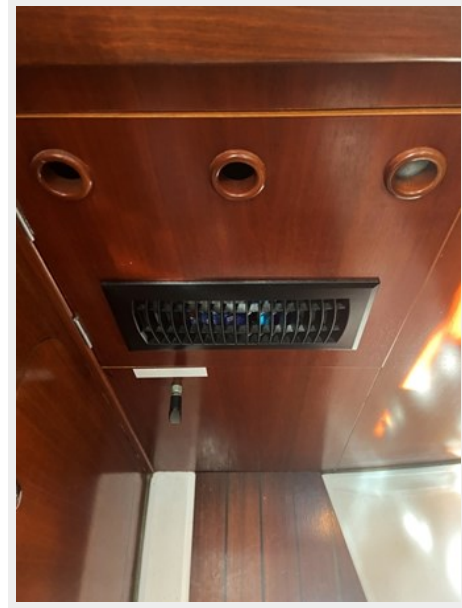
40_2787422_



41_2787422_



42_2787422_



43_2787422_



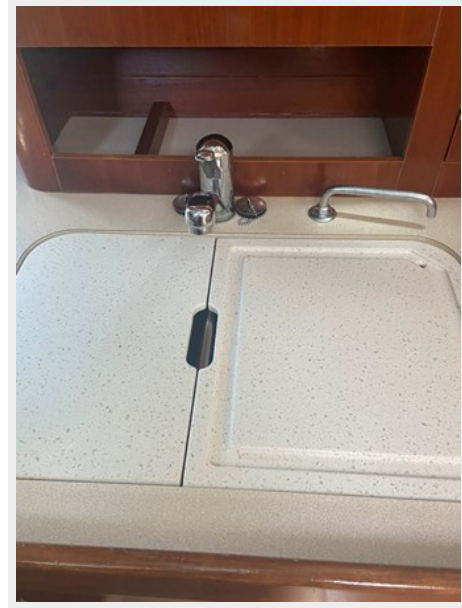
44_2787422_



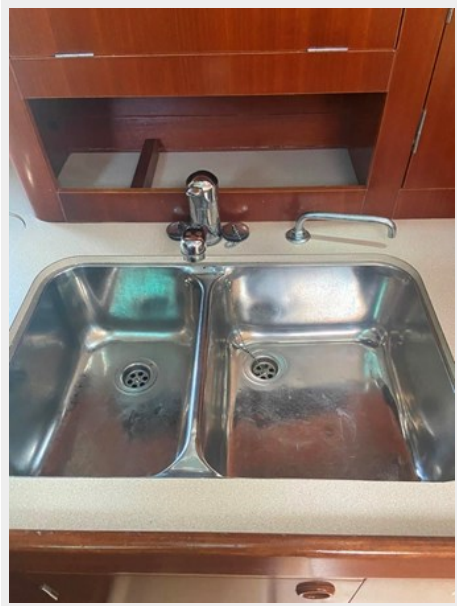
45_2787422_



46_2787422_



47_2787422_



48_2787422_



49_2787422_



50_2787422_



51_2787422_



52_2787422_



53_2787422_



54_2787422_



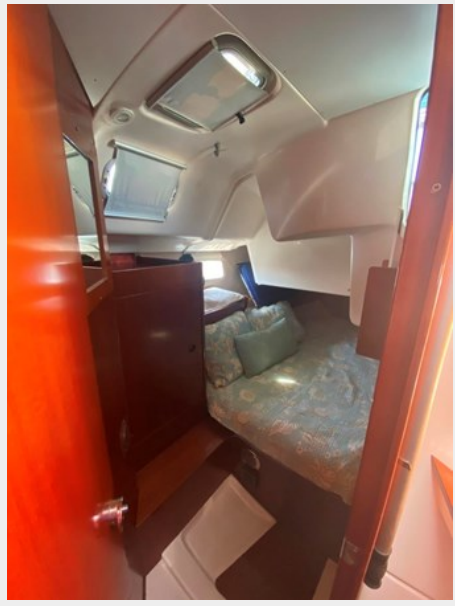
55_2787422_



56_2787422_



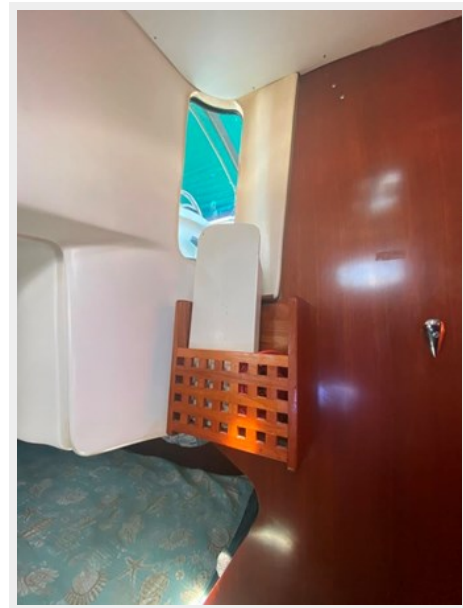
57_2787422_



58_2787422_



60_2787422_



59_2787422_



61_2787422_



62_2787422_



64_2787422_

63_2787422_



65_2787422_



66_2787422_



67_2787422_



68_2787422_



69_2787422_



70_2787422_



71_2787422_



72_2787422_



73_2787422_



74_2787422_



76_2787422_



CONTACTS

Andrey Shestakov, leading yacht broker of the sales department of Shestakov Yacht Sales Inc. Shestakov Yacht Sales Inc., the official representative of the Miami/Fort Lauderdale FL headquarters.

Contact details

Email: andrey@shestakovyachtsales.com

Web: shestakovyachtsales.com/en/

Telephones

USA: +1(954)274-4435

Office hours

Monday – Saturday: **9:00 - 21:00** EDT

Sunday: **closed**

Address



Harbour Towne Marina, 850 NE 3rd St,
STE 213, Dania, FL 33004