

MANA — SEA RAY



Builder: SEA RAY

Year Built: 2015

Model: Cruising Yacht

Price: PRICE ON APPLICATION

Location: United States

LOA: 51' (15.54mm)

Beam: 14.66

Min Draft: 3' 11" (1.19mm)

Max Draft: 4' 1" (1.24mm)

Cruise Speed: 21 Knots Kts. (24 MPH)

Max Speed: 26 Knots Kts. (30 MPH)

Our experienced yacht broker, Andrey Shestakov, will help you choose and buy a yacht that best suits your needs **MANA — SEA RAY** from our catalogue. Presently, at Shestakov Yacht Sales Inc., we have a wide variety of yachts available on our sale's list. We also work in close contact with all the big yacht manufacturers from all over the world.

If you would like to buy a yacht **MANA — SEA RAY** or would like help answering any questions concerning purchasing, selling or chartering a yacht, please call **+1(954)274-4435**

TABLE OF CONTENTS

TABLE OF CONTENTS	2
SPECIFICATIONS	5
Overview	5
Basic Information	5
Dimensions	5
Speed, Capacities and Weight	5
Accommodations	5
Hull and Deck Information	6
Engine Information	6
PHOTOS	7
Mana Aerial	7
Mana Aerial	7
Mana Aerial	7
Mana Aerial	7
Mana Aerial	7
Mana Aerial	7
Mana Aerial	8
Foredeck	8
Foredeck Reclining Sunpad	8
Hydraulic Swim Platform	8
Cockpit Seating	8
Cockpit Seating	8
Cockpit Seating With Sureshade Extended	9
Cockpit Seating With Sureshade Extended	9
Cockpit Grill Enclosure	9
Cockpit Grill	9
Sunroom	9
Sunroom Sofa Seating and Extending Table	9

Sunroom Bar & Entertainment-Rotating Helm Chair	10
Sunroom Seating w/Table Extended and Helm Ch	10
Sunroom Helm	10
Sunroom Helm	10
Helm	10
Helm	10
Helm	11
Lower Salon/Galley	11
Galley	11
Galley	11
Lower Salon	11
Lower Salon w/Pullout Berth	11
Forward VIP Entrance	12
Forward VIP	12
Forward Shared Head	12
Master Stateroom Entrance	12
Master Stateroom	12
Master Stateroom	12
Master Stateroom	13
Washer and Dryer Combo Unit	13
Master Head and Shower Stall	13
Master Head	13
Engine Room	13
Engine Room	13
Engine Room	14
Engine Room	14
Engine Room	14
Engine Room	14
CONTACTS	15

Contact details	15
Telephones	15
Office hours	15
Address	15

SPECIFICATIONS

Overview

N/A

Basic Information

Category: Cruising Yacht

Sub Category: Express

Model Year: 2016

Year Built: 2015

Country: United States

Dimensions

LOA: 51' (15.54mm)

Beam: 14.66

Min Draft: 3' 11" (1.19mm)

Max Draft: 4' 1" (1.24mm)

Speed, Capacities and Weight

Cruise Speed: 21 Knots Kts. (24 MPH)

Max Speed: 26 Knots Kts. (30 MPH)

Water Capacity: 110 Gallons

Holding Tank: 60 Gal Gallons

Fuel Capacity: 400 Gal Gallons

Accommodations

Total Cabins: 2

Total Berths: 3

Sleeps: 6

Total Heads: 2

Hull and Deck Information

Hull Material: Fiberglass

Hull Color: White

Engine Information

Engines: 2

Manufacturer: Cummins

Engine Type: Inboard

Fuel Type: Diesel

PHOTOS

Mana Aerial



Mana Aerial



Mana Aerial



Mana Aerial



Mana Aerial



Mana Aerial



Mana Aerial



Foredeck



Foredeck Reclining Sunpad



Hydraulic Swim Platform



Cockpit Seating



Cockpit Seating



Cockpit Seating With Sureshade Extended



Cockpit Seating With Sureshade Extended



Cockpit Grill Enclosure



Cockpit Grill



Sunroom



Sunroom Sofa Seating and Extending Table



Sunroom Bar & Entertainment-Rotating Helm Chair



Sunroom Seating w/Table Extended and Helm Ch



Sunroom Helm



Sunroom Helm



Helm



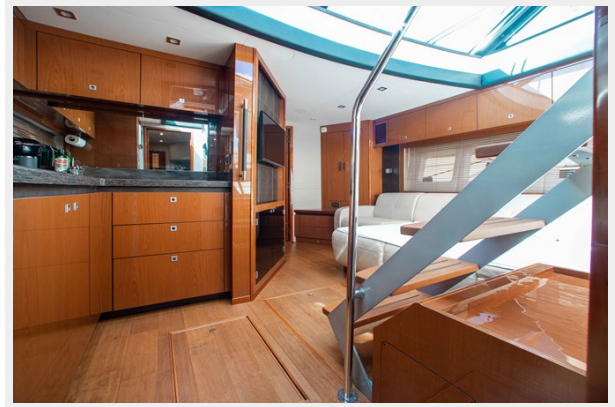
Helm



Helm



Lower Salon/Galley



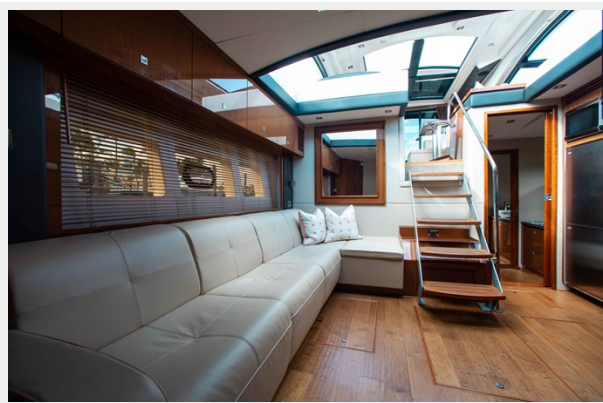
Galley



Galley



Lower Salon



Lower Salon w/Pullout Berth



Forward VIP Entrance



Forward VIP



Forward Shared Head



Master Stateroom Entrance



Master Stateroom



Master Stateroom



Master Stateroom



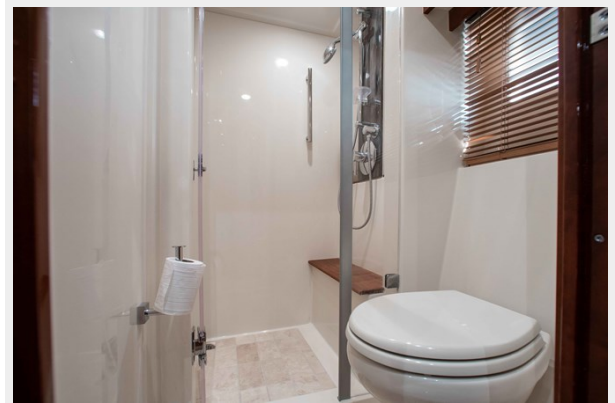
Washer and Dryer Combo Unit



Master Head



Master Head and Shower Stall



Engine Room



Engine Room



Engine Room



Engine Room



Engine Room



Engine Room



CONTACTS

Andrey Shestakov, leading yacht broker of the sales department of Shestakov Yacht Sales Inc. Shestakov Yacht Sales Inc., the official representative of the Miami/Fort Lauderdale FL headquarters.

Contact details

Email: andrey@shestakovyachtsales.com

Web: shestakovyachtsales.com/en/

Telephones

USA: +1(954)274-4435

Office hours

Monday – Saturday: **9:00 - 21:00** EDT

Sunday: **closed**

Address



Harbour Towne Marina, 850 NE 3rd St,
STE 213, Dania, FL 33004