

## SLYDER 80 — MAVEA YACHTS



**Builder:** MAVEA YACHTS

**Year Built:** 2024

**Model:** Catamaran

**Price:** PRICE ON APPLICATION

**Location:** Turkey

**LOA:** 80' 1" (24.4mm)

**Beam:** 35.43

**Min Draft:** 5' (1.5mm)

**Max Draft:** 15' 2" (4.6mm)

**Cruise Speed:** 7 Knots Kts. (8 MPH)

**Max Speed:** 21 Knots Kts. (24 MPH)

Our experienced yacht broker, Andrey Shestakov, will help you choose and buy a yacht that best suits your needs **SLYDER 80 — MAVEA YACHTS** from our catalogue. Presently, at Shestakov Yacht Sales Inc., we have a wide variety of yachts available on our sale's list. We also work in close contact with all the big yacht manufacturers from all over the world.

If you would like to buy a yacht **SLYDER 80 — MAVEA YACHTS** or would like help answering any questions concerning purchasing, selling or chartering a yacht, please call **+1(954)274-4435**

---

# TABLE OF CONTENTS

---

TABLE OF CONTENTS	2
SPECIFICATIONS	4
Overview	4
Basic Information	4
Dimensions	4
Speed, Capacities and Weight	4
Accommodations	5
Hull and Deck Information	5
PHOTOS	6
15989.1	6
15989.2	6
15989.3	6
15989.4	6
15989.5	6
15989.6	6
15989.7	7
15989.8	7
15989.9	7
15989.10	7
15989.11	7
15989.12	7
15989.13	8
15989.14	8
15989.15	8
CONTACTS	9
Contact details	9
Telephones	9
Office hours	9

---

Address

9

# SPECIFICATIONS

---

## Overview

---

The brandnew SLYDER 80 Cat uniquely combines performance, aesthetics and cutting-edge technology matched sustainable propulsion and luxurious living space.

SLYDER80 embraces the elegance of a Café Racer monohull combined with the performance and space of a performance luxury catamaran. Central to her development was the clients' desire for a fast and fun, jet luxurious and spacious future-proof catamaran. Carbon hulls, vast solar areas, electric engines, a 30m<sup>2</sup> main salon, standing heights of 2.20m and large 1.80m x 2.10m beds are just some of her outstanding features.

## Basic Information

---

**Category:** Catamaran

**Model Year:** 2022

**Year Built:** 2024

**Country:** Turkey

## Dimensions

---

**LOA:** 80' 1" (24.4mm)

**Beam:** 35.43

**Min Draft:** 5' (1.5mm)

**Max Draft:** 15' 2" (4.6mm)

## Speed, Capacities and Weight

---

**Cruise Speed:** 7 Knots Kts. (8 MPH)

**Cruise Speed Range:** 1000

**Max Speed:** 21 Knots Kts. (24 MPH)

**Water Capacity:** 1200 Gallons

**Fuel Capacity:** 422.68 Gal Gallons

---

## Accommodations

---

**Total Cabins:** 4

**Sleeps:** 8

**Crew Cabin:** 4

**Crew Heads:** 2

---

## Hull and Deck Information

---

**Hull Material:** Carbon Composite

**Deck Material:** Teak

**Hull Configuration:** Daggerboards

**Hull Designer:** Matthias Krenz

**Exterior Designer:** Matthias Krenz

**Interior Designer:** Matthias Krenz

# PHOTOS

15989.1



15989.2



15989.3



15989.4



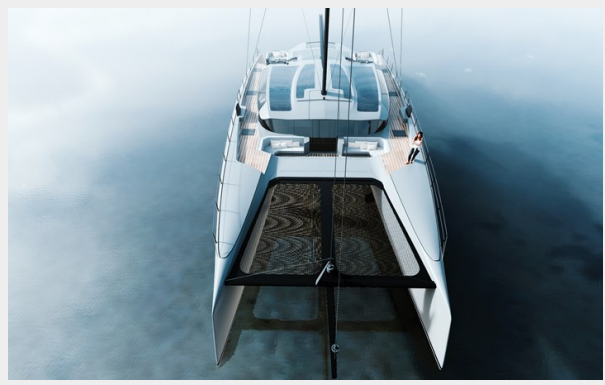
15989.5



15989.6



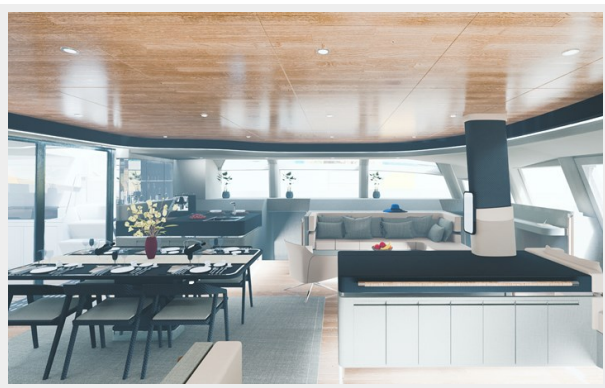
15989.7



15989.8



15989.9



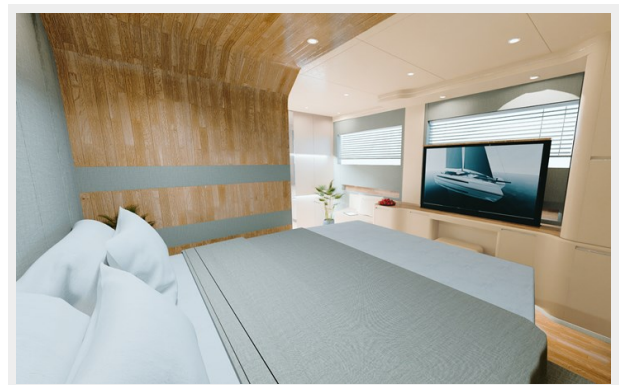
15989.10



15989.11



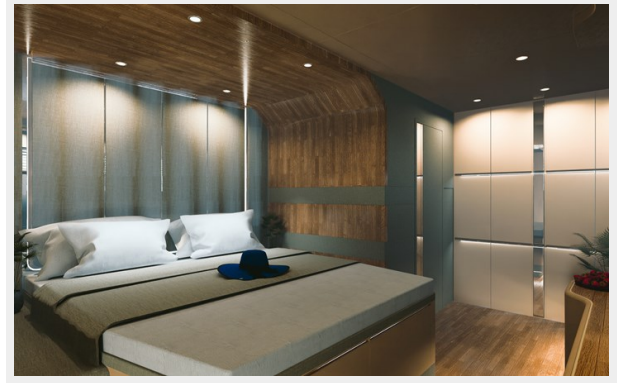
15989.12



15989.13



15989.14



15989.15





# CONTACTS

---

Andrey Shestakov, leading yacht broker of the sales department of Shestakov Yacht Sales Inc. Shestakov Yacht Sales Inc., the official representative of the Miami/Fort Lauderdale FL headquarters.

## Contact details

---

Email: [andrey@shestakovyachtsales.com](mailto:andrey@shestakovyachtsales.com)

Web: [shestakovyachtsales.com/en/](http://shestakovyachtsales.com/en/)

## Telephones

---

USA: +1(954)274-4435

## Office hours

---

Monday – Saturday: **9:00 - 21:00** EDT

Sunday: **closed**

## Address

---



Harbour Towne Marina, 850 NE 3rd St,  
STE 213, Dania, FL 33004