

SERAPHIM — MASON



Builder: MASON

Year Built: 1982

Model: Cruising Ketch

Price: PRICE ON APPLICATION

Location: United States

LOA: 53' (16.15mm)

Beam: 14.33

Max Draft: 7' 5" (2.26mm)

Cruise Speed: 10 Knots Kts. (12 MPH)

Max Speed: 15 Knots Kts. (17 MPH)

Our experienced yacht broker, Andrey Shestakov, will help you choose and buy a yacht that best suits your needs **Seraphim — MASON** from our catalogue. Presently, at Shestakov Yacht Sales Inc., we have a wide variety of yachts available on our sale's list. We also work in close contact with all the big yacht manufacturers from all over the world.

If you would like to buy a yacht **Seraphim — MASON** or would like help answering any questions concerning purchasing, selling or chartering a yacht, please call **+1(954)274-4435**

TABLE OF CONTENTS

TABLE OF CONTENTS	2
SPECIFICATIONS	6
Overview	6
Basic Information	6
Dimensions	6
Speed, Capacities and Weight	6
Accommodations	7
Hull and Deck Information	7
Engine Information	7
PHOTOS	8
0_2786051_	8
1_2786051_	8
2_2786051_	8
3_2786051_	8
4_2786051_	8
5_2786051_	8
6_2786051_	9
7_2786051_	9
8_2786051_	9
9_2786051_	9
10_2786051_	9
11_2786051_	9
12_2786051_	10
13_2786051_	10
14_2786051_	10
15_2786051_	10
16_2786051_	10
17_2786051_	10

18_2786051_	11
19_2786051_	11
20_2786051_	11
21_2786051_	11
22_2786051_	11
23_2786051_	11
24_2786051_	12
25_2786051_	12
26_2786051_	12
27_2786051_	12
28_2786051_	12
29_2786051_	12
30_2786051_	13
31_2786051_	13
32_2786051_	13
33_2786051_	13
34_2786051_	13
35_2786051_	13
36_2786051_	14
37_2786051_	14
38_2786051_	14
39_2786051_	14
40_2786051_	14
41_2786051_	14
42_2786051_	15
43_2786051_	15
44_2786051_	15
45_2786051_	15
46_2786051_	15

47_2786051_	15
49_2786051_	16
50_2786051_	16
51_2786051_	16
52_2786051_	16
55_2786051_	16
56_2786051_	16
58_2786051_	17
59_2786051_	17
60_2786051_	17
61_2786051_	17
62_2786051_	17
63_2786051_	17
64_2786051_	18
65_2786051_	18
66_2786051_	18
67_2786051_	18
68_2786051_	18
70_2786051_	18
71_2786051_	19
72_2786051_	19
73_2786051_	19
74_2786051_	19
75_2786051_	19
76_2786051_	19
77_2786051_	20
78_2786051_	20
79_2786051_	20
80_2786051_	20

81_2786051_	20
82_2786051_	20
83_2786051_	21
84_2786051_	21
85_2786051_	21
86_2786051_	21
87_2786051_	21
89_2786051_	21
93_2786051_	22
CONTACTS	23
Contact details	23
Telephones	23
Office hours	23
Address	23

SPECIFICATIONS

Overview

This 53' Mason is a dream boat.... Traditional lines, sound structure and amazing space. Not only is she beautiful under sail, she also has a beautiful interior. 2015 – 2018 she has had extensive upgrades, (2018 2 new Jabsco quite flush fresh water toilets, all new canvass - sail bags, bimini, dodgers, replaced exterior cushions, replaced main sheet jib sheets, main halyard and extra forward halyard) and currently her bottom is being serviced. Perkins Engine rebuild in 2007. She is on the hard, but ready to get back into the water and show her strength. Her owners spent several years in the Caribbean and enjoyed a wonderful lifestyle with travel. The ocean calls her angelic name... Seraphim..

Basic Information

Category: Cruising Ketch

Model Year: 1982

Year Built: 1982

Country: United States

Dimensions

LOA: 53' (16.15mm)

Beam: 14.33

Max Draft: 7' 5" (2.26mm)

Speed, Capacities and Weight

Cruise Speed: 10 Knots Kts. (12 MPH)

Max Speed: 15 Knots Kts. (17 MPH)

Water Capacity: 330 Gallons

Holding Tank: 25 Gal Gallons

Fuel Capacity: 192 Gal Gallons

Accommodations

Total Cabins: 4

Sleeps: 8

Total Heads: 2

Hull and Deck Information

Hull Material: Fiberglass

Engine Information

Engines: 1

Manufacturer: Perkins

Engine Type: Inboard

Fuel Type: Diesel

PHOTOS

0_2786051_



1_2786051_



2_2786051_



3_2786051_



4_2786051_



5_2786051_



6_2786051_



7_2786051_



8_2786051_



9_2786051_



10_2786051_



11_2786051_



12_2786051_



13_2786051_



14_2786051_



15_2786051_



16_2786051_



17_2786051_



18_2786051_



19_2786051_



20_2786051_



21_2786051_



22_2786051_



23_2786051_



24_2786051_



25_2786051_



26_2786051_



27_2786051_



28_2786051_



29_2786051_



30_2786051_



31_2786051_



32_2786051_



33_2786051_



34_2786051_



35_2786051_



36_2786051_



37_2786051_



38_2786051_



39_2786051_



40_2786051_



41_2786051_



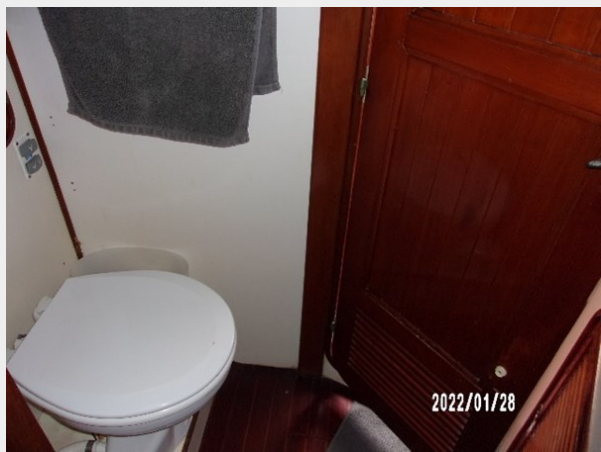
42_2786051_



43_2786051_



44_2786051_



45_2786051_



46_2786051_



47_2786051_



49_2786051_



50_2786051_



51_2786051_



52_2786051_



55_2786051_



56_2786051_



58_2786051_



59_2786051_



60_2786051_



61_2786051_



62_2786051_



63_2786051_



64_2786051_



65_2786051_



66_2786051_



67_2786051_



68_2786051_



70_2786051_



71_2786051_



72_2786051_



73_2786051_



74_2786051_



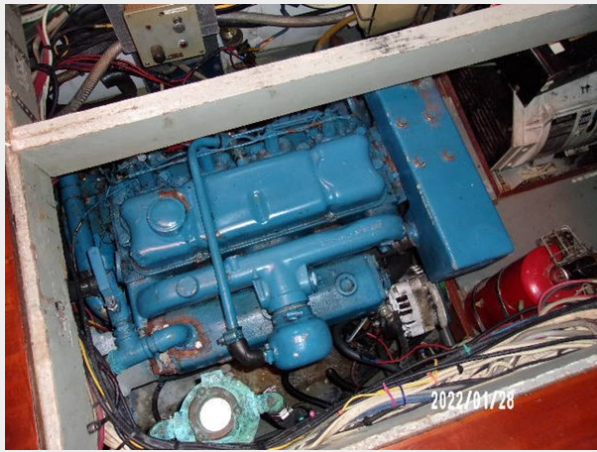
75_2786051_



76_2786051_



77_2786051_



78_2786051_



79_2786051_



80_2786051_



81_2786051_



82_2786051_



83_2786051_



84_2786051_



85_2786051_



86_2786051_



87_2786051_



89_2786051_



93_2786051_



CONTACTS

Andrey Shestakov, leading yacht broker of the sales department of Shestakov Yacht Sales Inc. Shestakov Yacht Sales Inc., the official representative of the Miami/Fort Lauderdale FL headquarters.

Contact details

Email: andrey@shestakovyachtsales.com

Web: shestakovyachtsales.com/en/

Telephones

USA: +1(954)274-4435

Office hours

Monday – Saturday: **9:00 - 21:00** EDT

Sunday: **closed**

Address



Harbour Towne Marina, 850 NE 3rd St,
STE 213, Dania, FL 33004