

IMMORTALIS — NIIGATA



Builder: NIIGATA

Year Built: 1996

Model: Motor Yacht

Price: PRICE ON APPLICATION

Location: Australia

LOA: 147' 8" (45mm)

Beam: 24.27

Max Draft: 10' 6" (3.2mm)

Cruise Speed: 10 Knots Kts. (12 MPH)

Max Speed: 12 Knots Kts. (14 MPH)

Our experienced yacht broker, Andrey Shestakov, will help you choose and buy a yacht that best suits your needs **IMMORTALIS — NIIGATA** from our catalogue. Presently, at Shestakov Yacht Sales Inc., we have a wide variety of yachts available on our sale's list. We also work in close contact with all the big yacht manufacturers from all over the world.

If you would like to buy a yacht **IMMORTALIS — NIIGATA** or would like help answering any questions concerning purchasing, selling or chartering a yacht, please call **+1(954)274-4435**

TABLE OF CONTENTS

TABLE OF CONTENTS	2
SPECIFICATIONS	3
Overview	3
Basic Information	3
Dimensions	3
Speed, Capacities and Weight	4
Accommodations	4
Hull and Deck Information	4
Engine Information	4
PHOTOS	5
CONTACTS	12
Contact details	12
Telephones	12
Office hours	12
Address	12

SPECIFICATIONS

Overview

IMMORTALIS was built in 1996 by Niigata shipyard for the Japanese government as a scientific research vessel. Her work included seismic surveying, fish stocks monitoring, carrying large loads and also worked as a crew training vessel.

She has a comprehensive setup of military grade equipment throughout the boat. Every system has a failsafe full backup system.

In 2020/2021 she was undergoing an extensive refit to become a specialized expedition vessel.

Key highlights to the refit:

- 18t of steel added to keep to improve stability
- Purpose built great room for conferencing/dining/working
- Expansive back deck for working and storage
- Sun deck and helipad deck for additional amenities
- Purpose built galley for long expeditions and gourmet food

IMMORTALIS is a long-range expedition style yacht. The refurbished vessel marries modern contemporary style with glimpses into her former life as a scientific research vessel. The relaxed yet functional environment is available for guest to enjoy, relax and explore in tailor made fashion.

Basic Information

Category: Motor Yacht

Sub Category: Expedition or Explorer

Model Year: 1996

Year Built: 1996

Country: Australia

Dimensions

LOA: 147' 8" (45mm)

LWL: 128' 6" (39.15mm)

Beam: 24.27

Max Draft: 10' 6" (3.2mm)

Speed, Capacities and Weight

Cruise Speed: 10 Knots Kts. (12 MPH)

Max Speed: 12 Knots Kts. (14 MPH)

Gross Tonnage: 319 Pounds

Water Capacity: 2641 Gallons

Fuel Capacity: 26681 Gal Gallons

Accommodations

Total Cabins: 6

Total Heads: 6

Hull and Deck Information

Hull Material: Steel

Exterior Designer: Periscope Naval
Architects

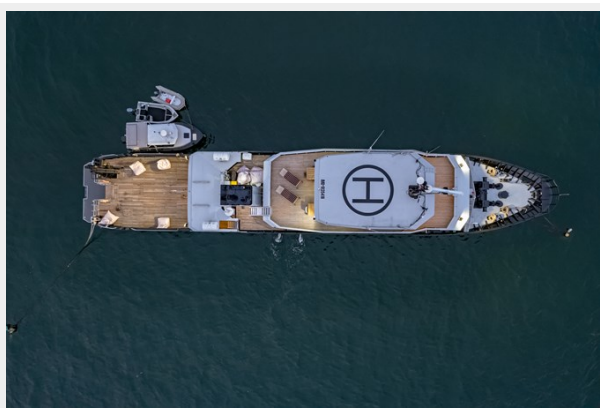
Interior Designer: Ashley Sutton Design

Engine Information

Engines: 1

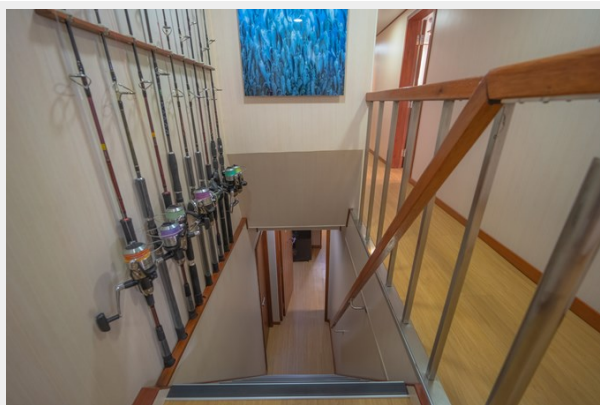
Manufacturer: Niigata

PHOTOS

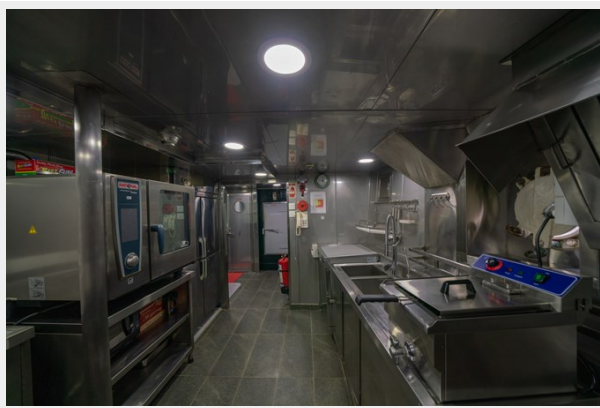
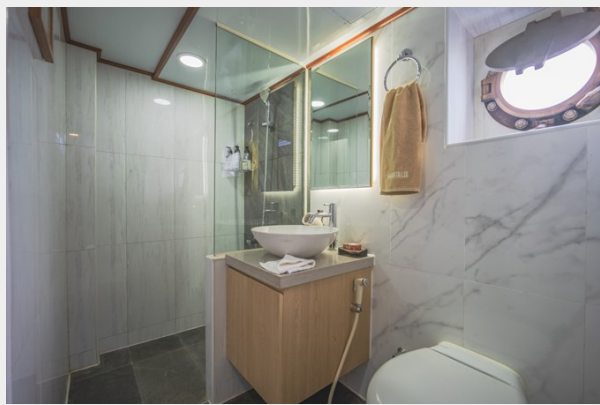


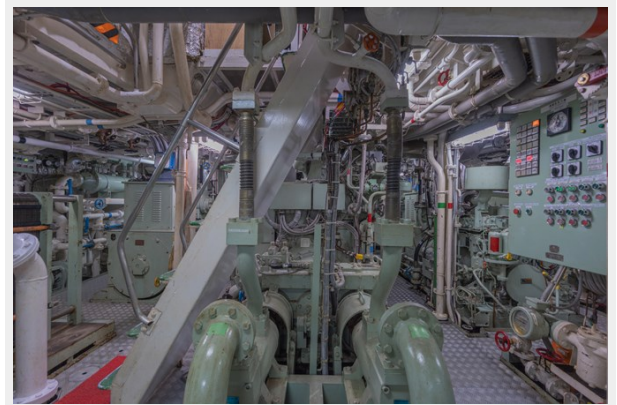












CONTACTS

Andrey Shestakov, leading yacht broker of the sales department of Shestakov Yacht Sales Inc. Shestakov Yacht Sales Inc., the official representative of the Miami/Fort Lauderdale FL headquarters.

Contact details

Email: andrey@shestakovyachtsales.com

Web: shestakovyachtsales.com/en/

Telephones

USA: +1(954)274-4435

Office hours

Monday – Saturday: **9:00 - 21:00** EDT

Sunday: **closed**

Address



Harbour Towne Marina, 850 NE 3rd St,
STE 213, Dania, FL 33004