

MATHISSE — SEANEST



Builder: SEANEST

Year Built: 2009

Model: Motor Yacht

Price: PRICE ON APPLICATION

LOA: 87' 4" (26.6mm)

Beam: 20.07

Min Draft: 5' (1.5mm)

Cruise Speed: 20 Knots Kts. (23 MPH)

Max Speed: 26 Knots Kts. (30 MPH)

Our experienced yacht broker, Andrey Shestakov, will help you choose and buy a yacht that best suits your needs **MATHISSE — SEANEST** from our catalogue. Presently, at Shestakov Yacht Sales Inc., we have a wide variety of yachts available on our sale's list. We also work in close contact with all the big yacht manufacturers from all over the world.

If you would like to buy a yacht **MATHISSE — SEANEST** or would like help answering any questions concerning purchasing, selling or chartering a yacht, please call **+1(954)274-4435**

TABLE OF CONTENTS

TABLE OF CONTENTS	2
SPECIFICATIONS	3
Overview	3
Basic Information	3
Dimensions	3
Speed, Capacities and Weight	3
Accommodations	4
Hull and Deck Information	4
Engine Information	4
PHOTOS	5
PROFILE	5
LARGE LIVING ROOM WITH TWO SOFAS	5
LARGE LIVING ROOM WITH TWO SOFAS	5
DINING AREA WITH OPENING TABLE	5
FLYBRIDGE	5
MASTER CABIN	5
VIP CABIN	6
TWIN CABIN	6
KITCHEN	6
TWIN CABIN	6
KITCHEN COMPLETE WITH HOB WITH FOUR BURNERS	6
ENGINE ROOM	6
CONTACTS	7
Contact details	7
Telephones	7
Office hours	7
Address	7

SPECIFICATIONS

Overview

HOW THE NAME OF THE MODEL REMEMBER, SEANEST "**85 DESIGN**" IS CHARACTERIZED BY A MINIMAL AND LIGHT STYLE THANKS TO THE PROFUSION OF WHITE. SOME CHOICES, LIKE TO HIDE THE KITCHEN BEHIND A SLIDING DOOR AND PLACING IN THE TABLE FROM LUNCH NEAR THE INTERNAL WHEELHOUSE, ALLOW THIS BOAT TO HAVE A REALLY VERY LARGE SALON AND BRIGHT. THE CABINS ARE COMPOSED AS FOLLOWS: 4 CABINS OF WHICH ONE MASTER IN THE AFT WITH BATHROOM AND WARDROBE CABIN, A VIP BOW WITH DOUBLE BED, BATHROOM AND WARDROBE, ONE IN THE CENTER OF BOAT WITH TWO SINGLE BEDS IN THE BATHROOM AND WARDROBE AND DRAWERS, ONE IN THE CENTER OF THE BOAT WITH TWO BEDS IN FLOOR PLUS THIRD OPENABLE BED. THE TYPE OF YACHT AS FLYBRIDGE CHARACTERIZES THE EXTERIOR IN A WAY TO LIVE AND ENJOY DIFFERENT AREAS, BOTH THE SUN AREA AND THE LARGE AFT COCKPIT EQUIPPED WITH FIXED TABLE, SOFA AND ARMCHAIRS FOR 12 PEOPLE. THE FLY BRIDGE, WHERE THE SECOND CONTROL STATION IS LOCATED, IS EQUIPPED WITH A LARGE SUNBATHING, A TABLE FOR 12 PEOPLE. IN AFT OF THE WHEELHOUSE THERE IS THE POSSIBILITY TO HOST 4 COMFORTABLE SUN BEDS. THE CREW AREA INCLUDES 3 PEOPLE AND IS COMPOSED OF 2 CABINS, ONE WITH 2 BEDS

Basic Information

Category: Motor Yacht

Model Year: 2009

Year Built: 2009

Dimensions

LOA: 87' 4" (26.6mm)

Beam: 20.07

Min Draft: 5' (1.5mm)

Speed, Capacities and Weight

Cruise Speed: 20 Knots Kts. (23 MPH)

Max Speed: 26 Knots Kts. (30 MPH)

Water Capacity: 1500 Gallons

Fuel Capacity: 1849.2 Gal Gallons

Accommodations

Total Cabins: 4

Hull and Deck Information

Hull Material: GRP

Deck Material: Teak

Engine Information

Engines: 2

Manufacturer: MTU

PHOTOS

PROFILE



LARGE LIVING ROOM WITH TWO SOFAS



LARGE LIVING ROOM WITH TWO SOFAS



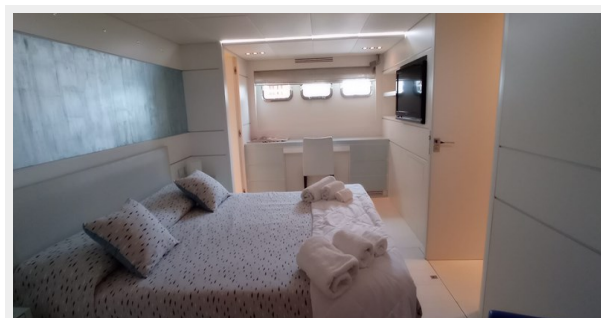
DINING AREA WITH OPENING TABLE



FLYBRIDGE



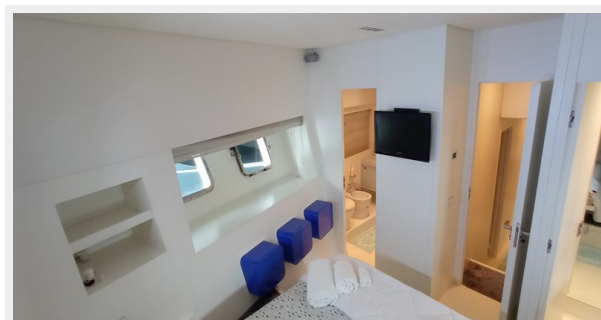
MASTER CABIN



VIP CABIN



TWIN CABIN



TWIN CABIN



KITCHEN



**KITCHEN COMPLETE WITH HOB WITH
FOUR BURNERS**



ENGINE ROOM



CONTACTS

Andrey Shestakov, leading yacht broker of the sales department of Shestakov Yacht Sales Inc. Shestakov Yacht Sales Inc., the official representative of the Miami/Fort Lauderdale FL headquarters.

Contact details

Email: **andrey@shestakovyachtsales.com**

Web: shestakovyachtsales.com/en/

Telephones

USA: **+1(954)274-4435**

Office hours

Monday – Saturday: **9:00 - 21:00 EDT**

Sunday: **closed**

Address



Harbour Towne Marina, 850 NE 3rd St,
STE 213, Dania, FL 33004