

## THE ATHAGAIL — CHAPARRAL



**Builder:** CHAPARRAL

**Year Built:** 2005

**Model:** Cruising Yacht

**Price:** PRICE ON APPLICATION

**Location:** United States

**LOA:** 35' (10.67mm)

**Beam:** 11.83

**Min Draft:** 2' 1" (0.63mm)

**Max Draft:** 2' 9" (0.84mm)

**Cruise Speed:** 28 Knots Kts. (32 MPH)

**Max Speed:** 36 Knots Kts. (41 MPH)

Our experienced yacht broker, Andrey Shestakov, will help you choose and buy a yacht that best suits your needs **The Athagail — CHAPARRAL** from our catalogue. Presently, at Shestakov Yacht Sales Inc., we have a wide variety of yachts available on our sale's list. We also work in close contact with all the big yacht manufacturers from all over the world.

If you would like to buy a yacht **The Athagail — CHAPARRAL** or would like help answering any questions concerning purchasing, selling or chartering a yacht, please call **+1(954)274-4435**

# TABLE OF CONTENTS

---

TABLE OF CONTENTS	2
SPECIFICATIONS	5
Overview	5
Basic Information	5
Dimensions	5
Speed, Capacities and Weight	5
Accommodations	6
Hull and Deck Information	6
Engine Information	6
PHOTOS	7
1_2787559_1_bow_starboard	7
2_2787559_2_bow_mid	7
3_2787559_3_bow_port	7
4_2787559_4_bow_mid	7
5_2787559_5_stern	7
6_2787559_6_bow_starboard	7
7_2787559_7_stern	7
8_2787559_8_signature_350	7
9_2787559_9_stern_locker	8
10_2787559_10_power_inlet	8
11_2787559_11_jump_lugs	8
12_2787559_12_anchor	8
13_2787559_13_anchor_locker	8
14_2787559_14_bow_deck	8
15_2787559_15_bow_deck	8
16_2787559_16_transom_shower	8
17_2787559_17_power_switches_and_breakers	9
18_2787559_18_cockpit_sink	9

---

19_2787559_19_cockpit_icemaker	9
20_2787559_20_cockpit_icemaker	9
21_2787559_21_cockpit_storage	9
22_2787559_22_waste_discharge_valve	9
23_2787559_23_aft_seating	9
24_2787559_24_helm_seating	9
25_2787559_25_helm_seating	10
26_2787559_26_helm_seating	10
27_2787559_27_helm	10
28_2787559_28_helm	10
29_2787559_29_helm	10
30_2787559_30_helm	10
31_2787559_31_helm	10
32_2787559_32_helm	10
33_2787559_33_helm	11
34_2787559_34_depth_sounder	11
35_2787559_35_neutrasalt_wash	11
36_2787559_36_vhf	11
37_2787559_37_richie_compass	11
38_2787559_38_arch_equipment	11
39_2787559_39_arch_equipment	11
40_2787559_40_cabin_entry	11
41_2787559_41_salon	12
42_2787559_42_dinette	12
43_2787559_43_galley	12
44_2787559_44_glass_cooktop	12
45_2787559_45_refrigerator	12
46_2787559_46_galley	12
47_2787559_47_ss_sink	12

---

---

48_2787559_48_v_berth	12
49_2787559_49_v_berth	13
50_2787559_50_v_berth	13
51_2787559_51_aft_salon	13
52_2787559_52_head	13
53_2787559_53_head	13
54_2787559_54_table_height_adjust	13
55_2787559_55_ac_dc_panel	13
56_2787559_56_hvac_control	13
57_2787559_57_cabin_entry	14
58_2787559_58_engine_room	14
59_2787559_59_volvo_penta_81	14
60_2787559_60_volvo_penta_81	14
61_2787559_61_volvo_penta_81	14
62_2787559_62_volvo_penta_81	14
63_2787559_63_kohler_generator	14
64_2787559_64_battery_charger	14
65_2787559_65_engine_room	15
66_2787559_66_engine_room	15
CONTACTS	16
Contact details	16
Telephones	16
Office hours	16
Address	16

---

---

# SPECIFICATIONS

---

## Overview

---

### NEW TO MARKET - 2005 CHAPARRAL 350 SIGNATURE SERIES

This 2005 Chaparral 350 Signature Series express cruiser is ready for you and the lake this summer. This one-owner boat has been well maintained with many upgrades and lightly used. She is a low hour boat that will exceed your expectations. Her elegant lines, high end performance, and functionality make her the perfect boat to take you to a faraway port or entertain family and friends on the lake, she can do it all. With the 8.1 Volvo Penta engines, DPS outdrives, and extended V-Plane hull she can handle the water and close quarter maneuvering is a breeze.

Come check this boat out before she's gone!

## Basic Information

---

**Category:** Cruising Yacht

**Sub Category:** Express

**Model Year:** 2005

**Year Built:** 2005

**Country:** United States

## Dimensions

---

**LOA:** 35' (10.67mm)

**Beam:** 11.83

**Min Draft:** 2' 1" (0.63mm)

**Max Draft:** 2' 9" (0.84mm)

## Speed, Capacities and Weight

---

**Cruise Speed:** 28 Knots Kts. (32 MPH)

**Max Speed:** 36 Knots Kts. (41 MPH)

**Water Capacity:** 40 Gallons

**Holding Tank:** 28 Gal Gallons

---

## Accommodations

---

**Total Cabins:** 1

**Sleeps:** 4

**Total Heads:** 1

---

## Hull and Deck Information

---

**Hull Material:** Fiberglass

---

## Engine Information

---

**Engines:** 2

**Manufacturer:** Volvo Penta

**Engine Type:** I/O

**Fuel Type:** Gas/Petrol

# PHOTOS

1\_2787559\_1\_bow\_starboard



2\_2787559\_2\_bow\_mid



3\_2787559\_3\_bow\_port



4\_2787559\_4\_bow\_mid



5\_2787559\_5\_stern



6\_2787559\_6\_bow\_starboard



7\_2787559\_7\_stern



8\_2787559\_8\_signature\_350



9\_2787559\_9\_stern\_locker



10\_2787559\_10\_power\_inlet



11\_2787559\_11\_jump\_lugs



12\_2787559\_12\_anchor



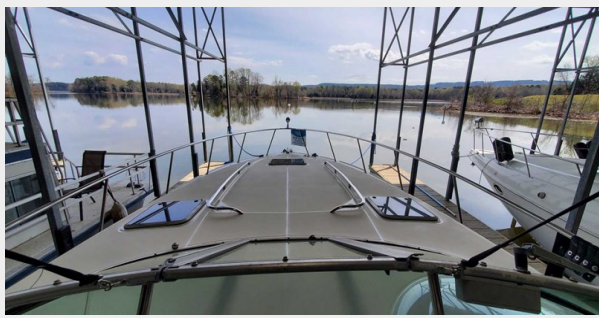
13\_2787559\_13\_anchor\_locker



14\_2787559\_14\_bow\_deck



15\_2787559\_15\_bow\_deck



16\_2787559\_16\_transom\_shower





17\_2787559\_17\_power\_switches\_and\_breakers



18\_2787559\_18\_cockpit\_sink



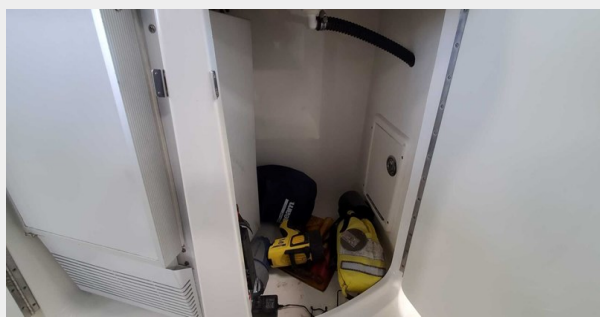
19\_2787559\_19\_cockpit\_icemaker



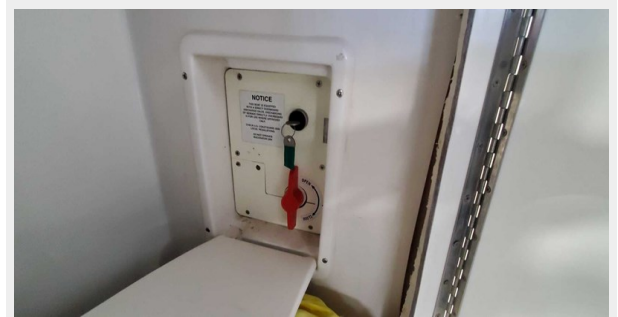
20\_2787559\_20\_cockpit\_icemaker



21\_2787559\_21\_cockpit\_storage



22\_2787559\_22\_waste\_discharge\_valve



23\_2787559\_23\_aft\_seating



24\_2787559\_24\_helm\_seating



25\_2787559\_25\_helm\_seating



26\_2787559\_26\_helm\_seating



27\_2787559\_27\_helm



28\_2787559\_28\_helm



29\_2787559\_29\_helm



30\_2787559\_30\_helm



31\_2787559\_31\_helm



32\_2787559\_32\_helm



**33\_2787559\_33\_helm**



**34\_2787559\_34\_depth\_sounder**



**35\_2787559\_35\_neutrasalt\_wash**



**36\_2787559\_36\_vhf**



**37\_2787559\_37\_richie\_compass**



**38\_2787559\_38\_arch\_equipment**



**39\_2787559\_39\_arch\_equipment**



**40\_2787559\_40\_cabin\_entry**



41\_2787559\_41\_salon



42\_2787559\_42\_dinette



43\_2787559\_43\_galley



44\_2787559\_44\_glass\_cooktop



45\_2787559\_45\_refrigerator



46\_2787559\_46\_galley



47\_2787559\_47\_ss\_sink



48\_2787559\_48\_v\_berth



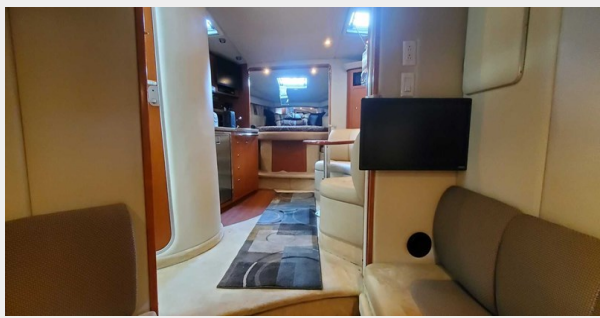
49\_2787559\_49\_v\_berth



50\_2787559\_50\_v\_berth



51\_2787559\_51\_aft\_salon



52\_2787559\_52\_head



53\_2787559\_53\_head



54\_2787559\_54\_table\_height\_adjust



55\_2787559\_55\_ac\_dc\_panel



56\_2787559\_56\_hvac\_control



57\_2787559\_57\_cabin\_entry



58\_2787559\_58\_engine\_room



59\_2787559\_59\_volvo\_penta\_81



60\_2787559\_60\_volvo\_penta\_81



61\_2787559\_61\_volvo\_penta\_81



62\_2787559\_62\_volvo\_penta\_81



63\_2787559\_63\_kohler\_generator



64\_2787559\_64\_battery\_charger



65\_2787559\_65\_engine\_room



66\_2787559\_66\_engine\_room



# CONTACTS

---

Andrey Shestakov, leading yacht broker of the sales department of Shestakov Yacht Sales Inc. Shestakov Yacht Sales Inc., the official representative of the Miami/Fort Lauderdale FL headquarters.

## Contact details

---

Email: [andrey@shestakovyachtsales.com](mailto:andrey@shestakovyachtsales.com)

Web: [shestakovyachtsales.com/en/](http://shestakovyachtsales.com/en/)

## Telephones

---

USA: +1(954)274-4435

## Office hours

---

Monday – Saturday: **9:00 - 21:00** EDT

Sunday: **closed**

## Address

---



Harbour Towne Marina, 850 NE 3rd St,  
STE 213, Dania, FL 33004