

SELAH — CHB



Builder: [CHB](#)

Year Built: 1985

Model: Trawler Yacht

Price: PRICE ON APPLICATION

Location: United States

LOA: 35' (10.67mm)

Beam: 12

Max Draft: 3' 6" (1.07mm)

Cruise Speed: 8 Knots Kts. (9 MPH)

Our experienced yacht broker, Andrey Shestakov, will help you choose and buy a yacht that best suits your needs **Selah — CHB** from our catalogue. Presently, at Shestakov Yacht Sales Inc., we have a wide variety of yachts available on our sale's list. We also work in close contact with all the big yacht manufacturers from all over the world.

If you would like to buy a yacht **Selah — CHB** or would like help answering any questions concerning purchasing, selling or chartering a yacht, please call **+1(954)274-4435**

TABLE OF CONTENTS

| | |
|------------------------------|----|
| TABLE OF CONTENTS | 2 |
| SPECIFICATIONS | 6 |
| Overview | 6 |
| Basic Information | 6 |
| Dimensions | 6 |
| Speed, Capacities and Weight | 6 |
| Accommodations | 6 |
| Hull and Deck Information | 7 |
| Engine Information | 7 |
| PHOTOS | 8 |
| 0_2787564_ | 8 |
| 1_2787564_ | 8 |
| 3_2787564_ | 8 |
| 2_2787564_ | 8 |
| 4_2787564_ | 9 |
| 5_2787564_ | 9 |
| 7_2787564_ | 9 |
| 6_2787564_ | 9 |
| 8_2787564_ | 10 |
| 9_2787564_ | 10 |
| 10_2787564_ | 10 |
| 11_2787564_ | 10 |
| 12_2787564_ | 10 |
| 13_2787564_ | 10 |
| 14_2787564_ | 11 |
| 15_2787564_ | 11 |
| 16_2787564_ | 11 |
| 17_2787564_ | 11 |

| | |
|-------------|----|
| 18_2787564_ | 12 |
| 19_2787564_ | 12 |
| 21_2787564_ | 12 |
| 20_2787564_ | 12 |
| 22_2787564_ | 13 |
| 23_2787564_ | 13 |
| 24_2787564_ | 13 |
| 25_2787564_ | 13 |
| 26_2787564_ | 14 |
| 27_2787564_ | 14 |
| 28_2787564_ | 14 |
| 29_2787564_ | 14 |
| 31_2787564_ | 15 |
| 30_2787564_ | 15 |
| 32_2787564_ | 15 |
| 33_2787564_ | 15 |
| 34_2787564_ | 16 |
| 35_2787564_ | 16 |
| 36_2787564_ | 16 |
| 37_2787564_ | 16 |
| 38_2787564_ | 17 |
| 39_2787564_ | 17 |
| 40_2787564_ | 17 |
| 41_2787564_ | 17 |
| 42_2787564_ | 18 |
| 43_2787564_ | 18 |
| 44_2787564_ | 18 |
| 45_2787564_ | 18 |
| 46_2787564_ | 19 |

| | |
|-------------|----|
| 47_2787564_ | 19 |
| 48_2787564_ | 19 |
| 49_2787564_ | 19 |
| 50_2787564_ | 20 |
| 51_2787564_ | 20 |
| 52_2787564_ | 20 |
| 53_2787564_ | 20 |
| 54_2787564_ | 21 |
| 55_2787564_ | 21 |
| 56_2787564_ | 21 |
| 57_2787564_ | 21 |
| 58_2787564_ | 22 |
| 59_2787564_ | 22 |
| 60_2787564_ | 22 |
| 61_2787564_ | 22 |
| 62_2787564_ | 22 |
| 63_2787564_ | 22 |
| 64_2787564_ | 23 |
| 65_2787564_ | 23 |
| 66_2787564_ | 23 |
| 67_2787564_ | 23 |
| 69_2787564_ | 24 |
| 68_2787564_ | 24 |
| 70_2787564_ | 24 |
| 71_2787564_ | 24 |
| 73_2787564_ | 25 |
| 72_2787564_ | 25 |
| 74_2787564_ | 25 |
| 75_2787564_ | 25 |

| | |
|-----------------|----|
| 76_2787564_ | 26 |
| 77_2787564_ | 26 |
| 78_2787564_ | 26 |
| 79_2787564_ | 26 |
| 81_2787564_ | 26 |
| 80_2787564_ | 26 |
| 83_2787564_ | 27 |
| 82_2787564_ | 27 |
| 84_2787564_ | 27 |
| 85_2787564_ | 27 |
| 86_2787564_ | 27 |
| 87_2787564_ | 27 |
| 89_2787564_ | 28 |
| 88_2787564_ | 28 |
| 90_2787564_ | 28 |
| 91_2787564_ | 28 |
| 92_2787564_ | 28 |
| 93_2787564_ | 28 |
| 95_2787564_ | 29 |
| 94_2787564_ | 29 |
| CONTACTS | 30 |
| Contact details | 30 |
| Telephones | 30 |
| Office hours | 30 |
| Address | 30 |

SPECIFICATIONS

Overview

With a tall bow, good sight lines, and wide side decks and high rails, this trawler is built for cruising comfort and safety. The displacement hull is solid fiberglass construction throughout.

The bridge clearance is 16'6" with just the upper section of mast lowered; this makes *Selah* a perfect vessel for the Great Loop.

Selah has non-skid decks; the teak hand rails and toe caps are varnished. The teak interior highlights the beautiful joinery the overseas boatyards from this era are known for.

Basic Information

Category: Trawler Yacht

Model Year: 1985

Year Built: 1985

Country: United States

Dimensions

LOA: 35' (10.67mm)

Beam: 12

Max Draft: 3' 6" (1.07mm)

Speed, Capacities and Weight

Cruise Speed: 8 Knots Kts. (9 MPH)

Water Capacity: 200 Gallons

Holding Tank: 70 Gal Gallons

Fuel Capacity: 300 Gal Gallons

Accommodations

Total Cabins: 1

Total Heads: 1

Hull and Deck Information

Hull Material: Fiberglass

Engine Information

Engines: 2

Manufacturer: Perkins

Engine Type: Inboard

Fuel Type: Diesel

PHOTOS

0_2787564_



1_2787564_



2_2787564_



3_2787564_



4_2787564_

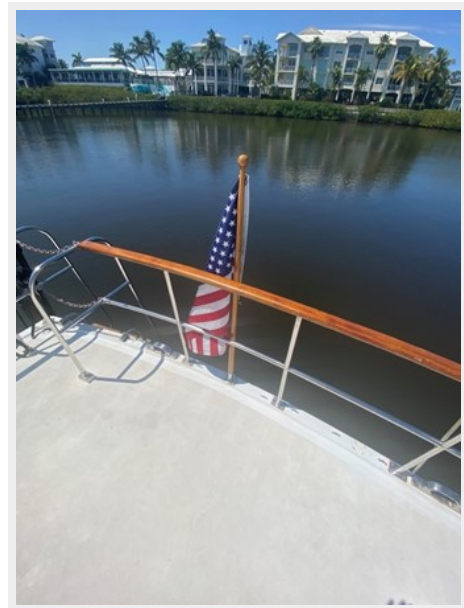


5_2787564_

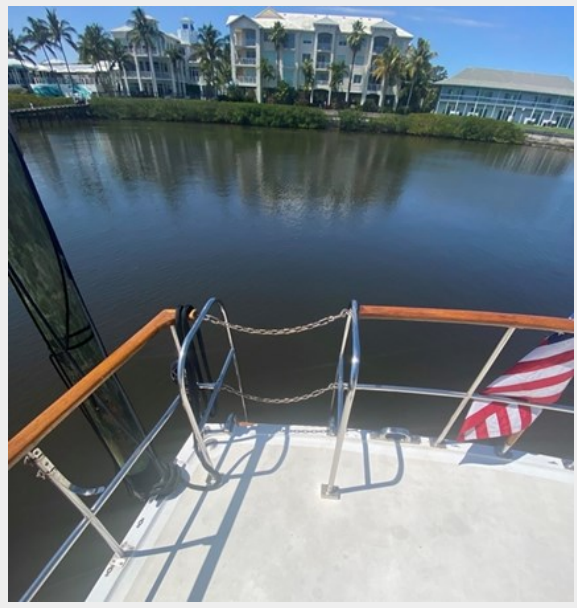


7_2787564_

6_2787564_



8_2787564_



9_2787564_



10_2787564_



11_2787564_



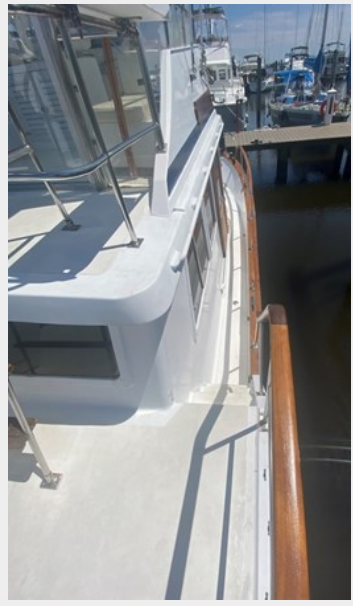
12_2787564_



13_2787564_



14_2787564_



15_2787564_



16_2787564_



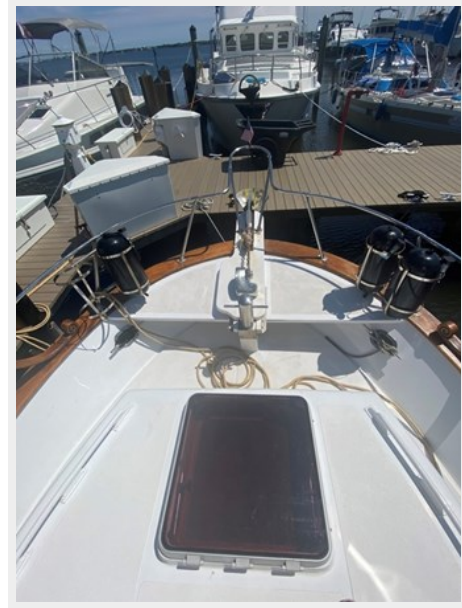
17_2787564_



18_2787564_



19_2787564_



20_2787564_



21_2787564_



22_2787564_



23_2787564_



24_2787564_



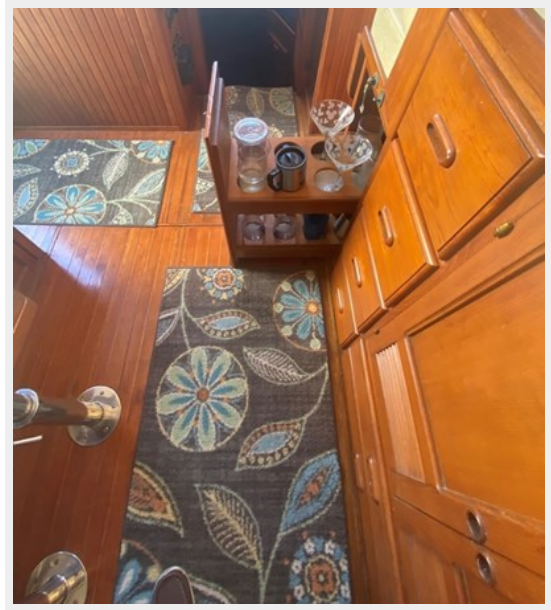
25_2787564_



26_2787564_



27_2787564_



28_2787564_



29_2787564_



30_2787564_



31_2787564_



32_2787564_



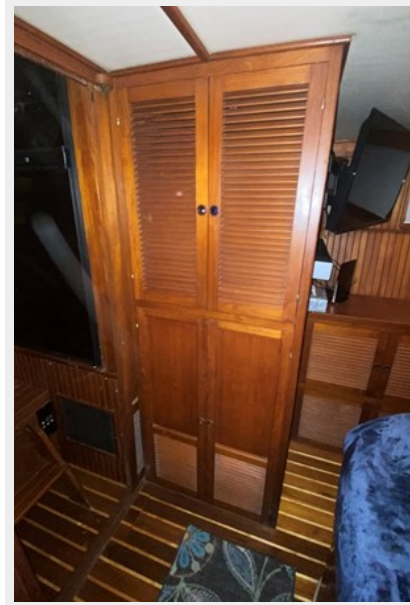
33_2787564_



34_2787564_



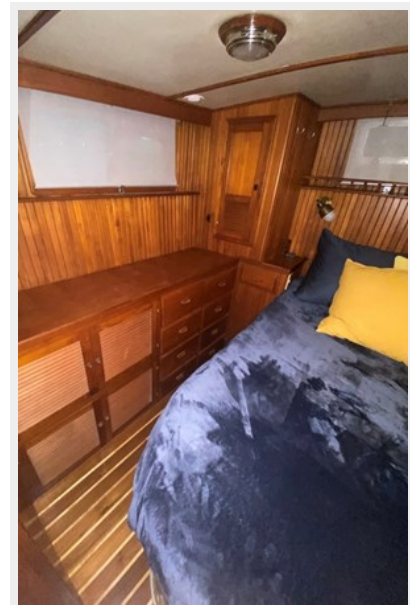
35_2787564_



36_2787564_



37_2787564_



38_2787564_



39_2787564_



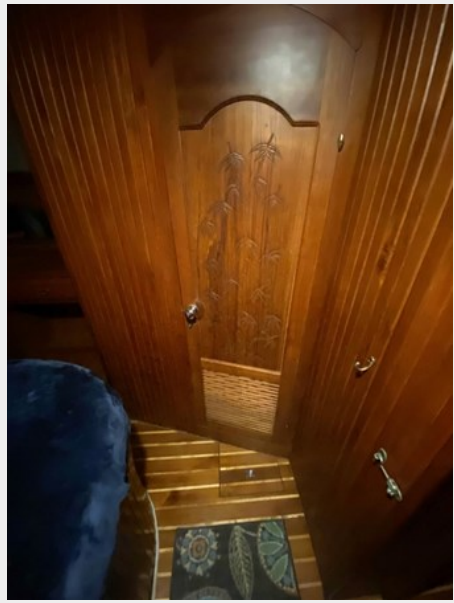
40_2787564_



41_2787564_



42_2787564_



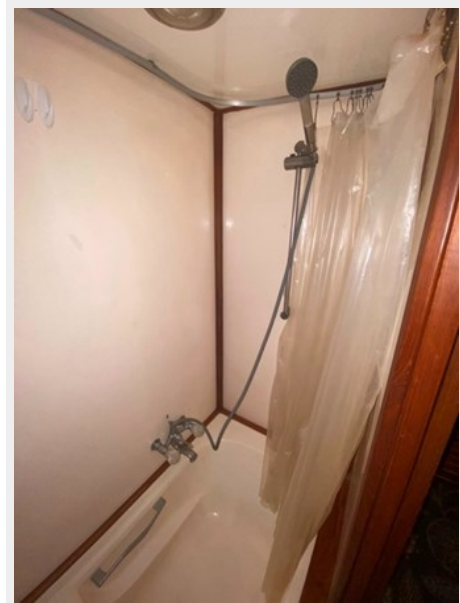
43_2787564_



44_2787564_



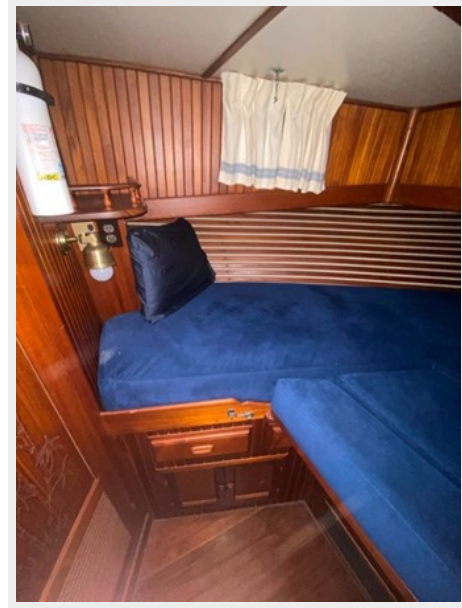
45_2787564_



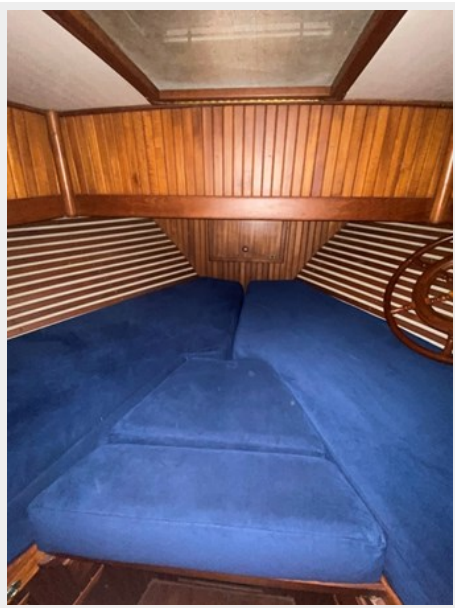
46_2787564_



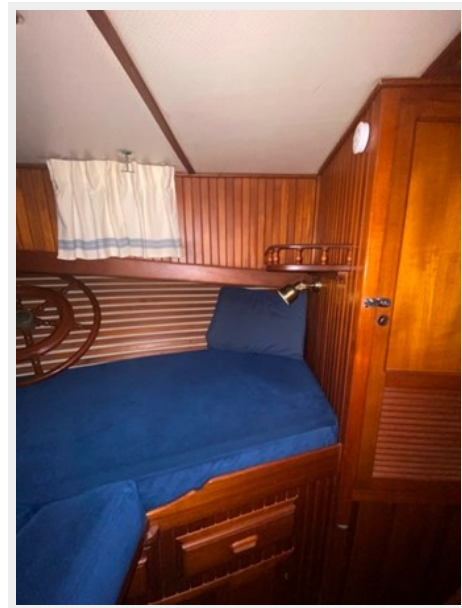
47_2787564_



48_2787564_



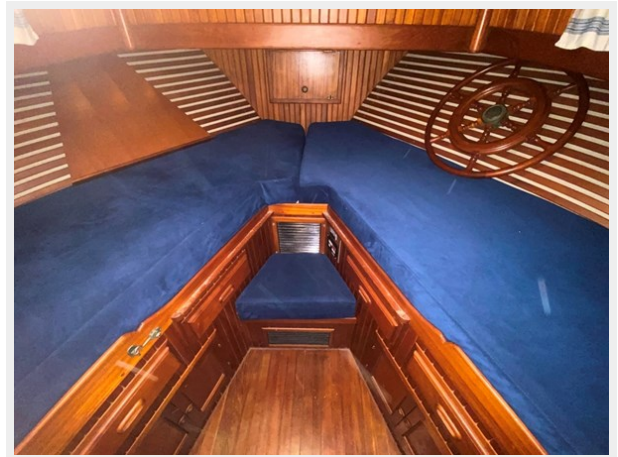
49_2787564_



50_2787564_



51_2787564_



52_2787564_



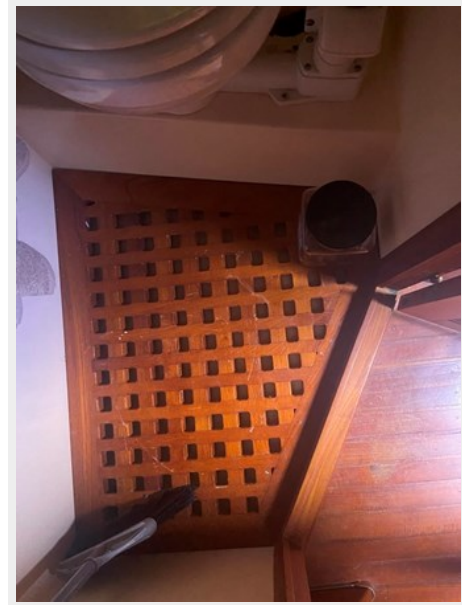
53_2787564_



54_2787564_



55_2787564_



56_2787564_



57_2787564_



58_2787564_



59_2787564_



60_2787564_



61_2787564_



62_2787564_



63_2787564_



64_2787564_



65_2787564_



66_2787564_



67_2787564_



68_2787564_



69_2787564_



70_2787564_



71_2787564_



72_2787564_



73_2787564_



74_2787564_



75_2787564_



76_2787564_



77_2787564_



78_2787564_



79_2787564_



80_2787564_



81_2787564_



82_2787564_



83_2787564_



84_2787564_



85_2787564_



86_2787564_



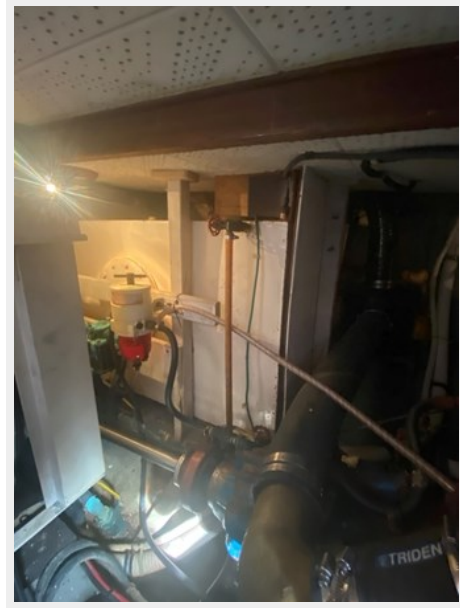
87_2787564_



88_2787564_



89_2787564_



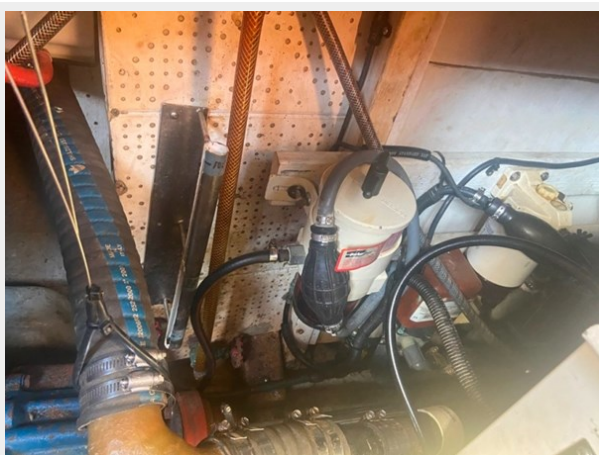
90_2787564_



91_2787564_



92_2787564_



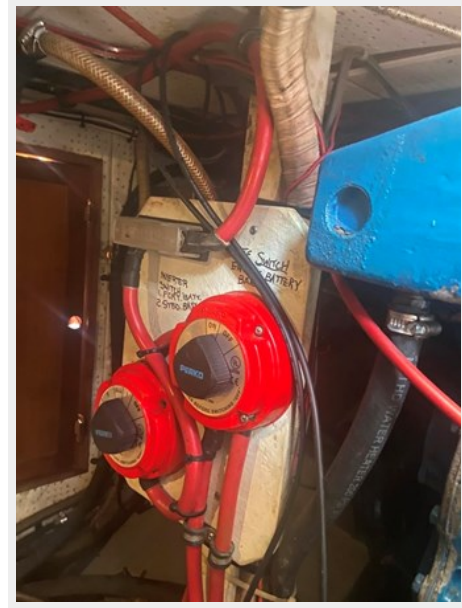
93_2787564_



94_2787564_



95_2787564_



CONTACTS

Andrey Shestakov, leading yacht broker of the sales department of Shestakov Yacht Sales Inc. Shestakov Yacht Sales Inc., the official representative of the Miami/Fort Lauderdale FL headquarters.

Contact details

Email: andrey@shestakovyachtsales.com

Web: shestakovyachtsales.com/en/

Telephones

USA: +1(954)274-4435

Office hours

Monday – Saturday: **9:00 - 21:00** EDT

Sunday: **closed**

Address



Harbour Towne Marina, 850 NE 3rd St,
STE 213, Dania, FL 33004