

MARBELLA — MONTE FINO



Builder: MONTE FINO

Year Built: 1996

Model: Motor Yacht

Price: PRICE ON APPLICATION

Location: United States

LOA: 108' (32.92mm)

Beam: 23

Max Draft: 6' 4" (1.93mm)

Cruise Speed: 11 Knots Kts. (13 MPH)

Max Speed: 15 Knots Kts. (17 MPH)

Our experienced yacht broker, Andrey Shestakov, will help you choose and buy a yacht that best suits your needs **Marbella — MONTE FINO** from our catalogue. Presently, at Shestakov Yacht Sales Inc., we have a wide variety of yachts available on our sale's list. We also work in close contact with all the big yacht manufacturers from all over the world.

If you would like to buy a yacht **Marbella — MONTE FINO** or would like help answering any questions concerning purchasing, selling or chartering a yacht, please call +1(954)274-4435

TABLE OF CONTENTS

TABLE OF CONTENTS	2
SPECIFICATIONS	5
Overview	5
Basic Information	6
Dimensions	6
Speed, Capacities and Weight	6
Accommodations	6
Hull and Deck Information	6
Engine Information	7
PHOTOS	8
Screen Shot 2022-04-04 at 15.50.48	8
Screen Shot 2022-04-04 at 15.50.54	8
Screen Shot 2022-04-04 at 15.51.10	8
Screen Shot 2022-04-04 at 15.51.01	8
Screen Shot 2022-04-04 at 15.51.18	8
Screen Shot 2022-04-04 at 15.51.24	8
Screen Shot 2022-04-04 at 15.51.30	9
Screen Shot 2022-04-04 at 15.51.38	9
Screen Shot 2022-04-04 at 15.51.46	9
Screen Shot 2022-04-04 at 15.51.54	9
Screen Shot 2022-04-04 at 15.51.59	9
Screen Shot 2022-04-04 at 15.52.07	9
Screen Shot 2022-04-04 at 15.52.16	10
Screen Shot 2022-04-04 at 15.52.21	10
Screen Shot 2022-04-04 at 15.52.36	10
Screen Shot 2022-04-04 at 15.52.29	10
Screen Shot 2022-04-04 at 15.52.47	10
Screen Shot 2022-04-04 at 15.52.55	10

Screen Shot 2022-04-04 at 15.53.01	11
Screen Shot 2022-04-04 at 15.53.10	11
Screen Shot 2022-04-04 at 15.53.16	11
Screen Shot 2022-04-04 at 15.53.27	11
Screen Shot 2022-04-04 at 15.53.33	11
Screen Shot 2022-04-04 at 15.53.39	11
Screen Shot 2022-04-04 at 15.53.53	12
Screen Shot 2022-04-04 at 15.53.45	12
Screen Shot 2022-04-04 at 15.54.12	12
Screen Shot 2022-04-04 at 15.54.07	12
Screen Shot 2022-04-04 at 15.54.26	12
Screen Shot 2022-04-04 at 15.54.19	12
Screen Shot 2022-04-04 at 15.54.39	13
Screen Shot 2022-04-04 at 15.54.32	13
Screen Shot 2022-04-04 at 15.54.52	13
Screen Shot 2022-04-04 at 15.54.46	13
Screen Shot 2022-04-04 at 15.54.59	13
Screen Shot 2022-04-04 at 15.55.05	13
Screen Shot 2022-04-04 at 15.55.12	14
Screen Shot 2022-04-04 at 15.55.18	14
Screen Shot 2022-04-04 at 15.55.28	14
Screen Shot 2022-04-04 at 15.55.33	14
Screen Shot 2022-04-04 at 15.55.47	14
Screen Shot 2022-04-04 at 15.55.40	14
Screen Shot 2022-04-04 at 15.55.54	15
Screen Shot 2022-04-04 at 15.56.01	15
Screen Shot 2022-04-04 at 15.56.08	15
Screen Shot 2022-04-04 at 15.56.17	15
Screen Shot 2022-04-04 at 15.56.36	15

Screen Shot 2022-04-04 at 15.56.30	15
Screen Shot 2022-04-04 at 15.56.43	16
Screen Shot 2022-04-04 at 15.56.49	16
Screen Shot 2022-04-04 at 15.56.56	16
Screen Shot 2022-04-04 at 15.57.09	16
Screen Shot 2022-04-04 at 15.57.16	16
Screen Shot 2022-04-04 at 15.57.25	16
Screen Shot 2022-04-04 at 15.57.32	17
Screen Shot 2022-04-04 at 15.57.38	17
Screen Shot 2022-04-04 at 15.57.53	17
Screen Shot 2022-04-04 at 15.57.45	17
Screen Shot 2022-04-04 at 15.58.01	18
Screen Shot 2022-04-04 at 15.58.10	18
Screen Shot 2022-04-04 at 15.58.18	18
Screen Shot 2022-04-04 at 15.58.26	18
Screen Shot 2022-04-04 at 15.58.38	18
CONTACTS	19
Contact details	19
Telephones	19
Office hours	19
Address	19

SPECIFICATIONS

Overview

MARBELLA is a very unique, contemporary-styled yacht with numerous upgrades throughout the years. She is fin-stabilized, providing a comfortable ride at sea.

Whether you wish to relax for the weekend or take an extended cruise for a week, she is ready for her new journeys to come.

She boasts 7' or more headroom throughout, and the interior surfaces are finished in a combination of warm Brazilian burlwood and designer wall coverings. Her large windows allow for warm natural lighting throughout the salon. She features a large full-beam master stateroom with a king-size bed, two guest cabins forward of the master with queen size beds and Pullmans, and a large VIP suite forward with a Kingsize bed. Her 23' beam allows for a spacious interior, and comfort while underway.

As you step into the cockpit, she has solid teak decks that were installed in 2015, a large solid wood table with seating for ten comfortably, and a fixed bar forward.

On the flybridge, she is equipped with a large davit, chocks and deck space for two seadoo sparks.

Moving midships on the flybridge, she features a full bar with four bar stools, TV, fridge, sink, and plenty of seating for cocktail hour.

Moving forward to the bow is her jacuzzi tub, comfortable for eight guests, a favorite while cruising into the sunset.

Marbella is a very economical yacht to operate, burning only 26 Gallons per hour at 12 knots.

She is owned by a fully transferrable LLC, along with a MARAD waiver.

Clean insurance survey was completed in August 2021.

Recent upgrades:

New turbos, fuel injectors, aftercoolers/heat exchangers serviced, valve adjustments on main engines.

New turbos, fuel injectors, heat exchangers serviced on both generators.

New Express XT Watermaker

New Garmin Electronics

New exterior cushions

New salon furniture & HD TV

New exterior sound system with Bluetooth capability

New 20' Apex tender powered by 150 HP Yamaha

Basic Information

Category: Motor Yacht

Model Year: 1996

Year Built: 1996

Country: United States

Dimensions

LOA: 108' (32.92mm)

Beam: 23

Max Draft: 6' 4" (1.93mm)

Speed, Capacities and Weight

Cruise Speed: 11 Knots Kts. (13 MPH)

Cruise Speed Range: 1650

Max Speed: 15 Knots Kts. (17 MPH)

Gross Tonnage: 183 Pounds

Water Capacity: 1200 Gallons

Fuel Capacity: 3900 Gal Gallons

Accommodations

Total Cabins: 4

Hull and Deck Information

Hull Material: Fiberglass

Engine Information

Engines: 2

Manufacturer: MAN

Engine Type: Inboard

Fuel Type: Diesel

PHOTOS

Screen Shot 2022-04-04 at 15.50.48



Screen Shot 2022-04-04 at 15.50.54



Screen Shot 2022-04-04 at 15.51.01



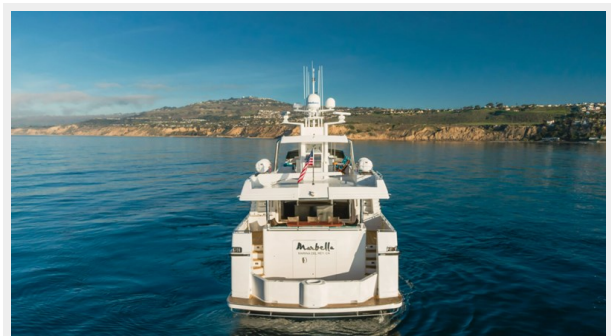
Screen Shot 2022-04-04 at 15.51.10



Screen Shot 2022-04-04 at 15.51.18



Screen Shot 2022-04-04 at 15.51.24



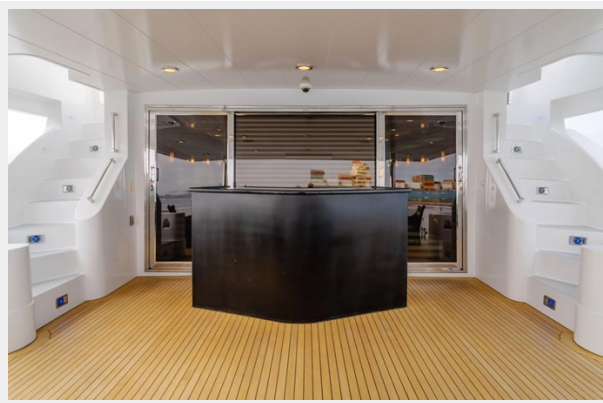
Screen Shot 2022-04-04 at 15.51.30



Screen Shot 2022-04-04 at 15.51.38



Screen Shot 2022-04-04 at 15.51.46



Screen Shot 2022-04-04 at 15.51.54



Screen Shot 2022-04-04 at 15.51.59



Screen Shot 2022-04-04 at 15.52.07



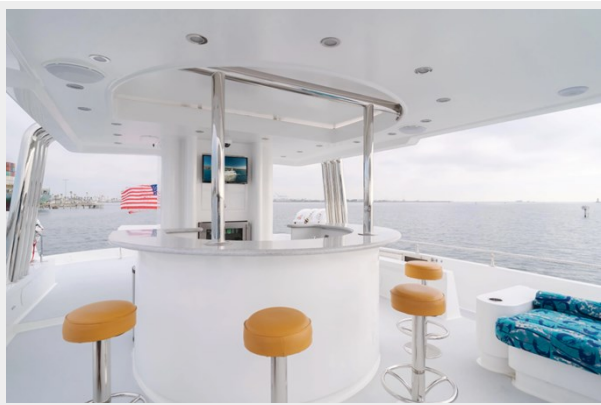
Screen Shot 2022-04-04 at 15.52.16



Screen Shot 2022-04-04 at 15.52.21



Screen Shot 2022-04-04 at 15.52.29



Screen Shot 2022-04-04 at 15.52.36



Screen Shot 2022-04-04 at 15.52.47



Screen Shot 2022-04-04 at 15.52.55



Screen Shot 2022-04-04 at 15.53.01



Screen Shot 2022-04-04 at 15.53.10



Screen Shot 2022-04-04 at 15.53.16



Screen Shot 2022-04-04 at 15.53.27



Screen Shot 2022-04-04 at 15.53.33



Screen Shot 2022-04-04 at 15.53.39



Screen Shot 2022-04-04 at 15.53.45



Screen Shot 2022-04-04 at 15.53.53



Screen Shot 2022-04-04 at 15.54.07



Screen Shot 2022-04-04 at 15.54.12



Screen Shot 2022-04-04 at 15.54.19



Screen Shot 2022-04-04 at 15.54.26



Screen Shot 2022-04-04 at 15.54.32



Screen Shot 2022-04-04 at 15.54.39



Screen Shot 2022-04-04 at 15.54.46



Screen Shot 2022-04-04 at 15.54.52



Screen Shot 2022-04-04 at 15.54.59



Screen Shot 2022-04-04 at 15.55.05



Screen Shot 2022-04-04 at 15.55.12



Screen Shot 2022-04-04 at 15.55.18



Screen Shot 2022-04-04 at 15.55.28



Screen Shot 2022-04-04 at 15.55.33



Screen Shot 2022-04-04 at 15.55.40



Screen Shot 2022-04-04 at 15.55.47



Screen Shot 2022-04-04 at 15.55.54



Screen Shot 2022-04-04 at 15.56.01



Screen Shot 2022-04-04 at 15.56.08



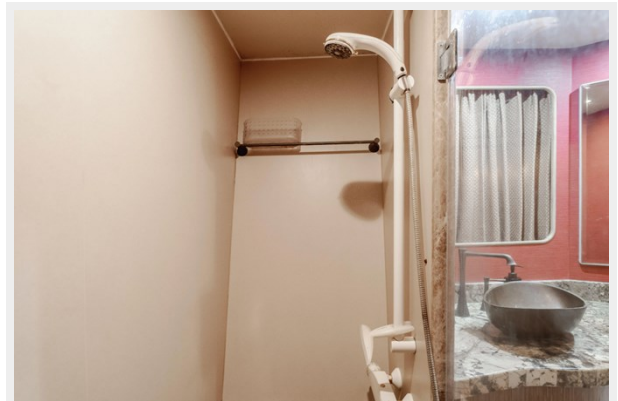
Screen Shot 2022-04-04 at 15.56.17



Screen Shot 2022-04-04 at 15.56.30



Screen Shot 2022-04-04 at 15.56.36



Screen Shot 2022-04-04 at 15.56.43



Screen Shot 2022-04-04 at 15.56.49



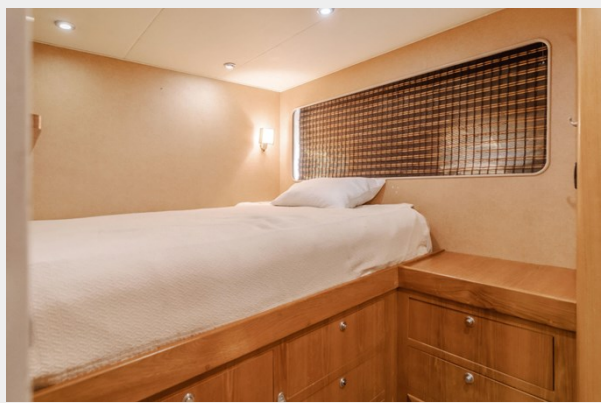
Screen Shot 2022-04-04 at 15.56.56



Screen Shot 2022-04-04 at 15.57.09



Screen Shot 2022-04-04 at 15.57.16



Screen Shot 2022-04-04 at 15.57.25



Screen Shot 2022-04-04 at 15.57.32



Screen Shot 2022-04-04 at 15.57.38

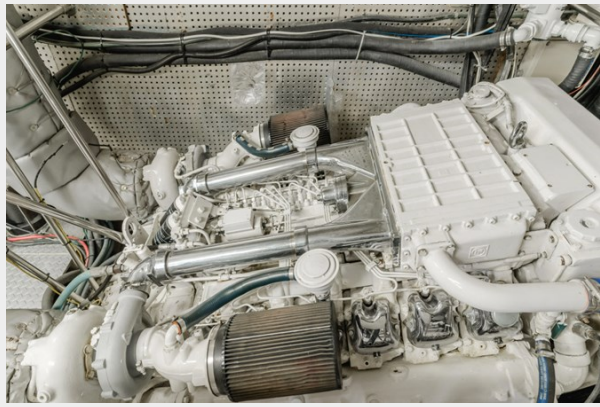


Screen Shot 2022-04-04 at 15.57.53

Screen Shot 2022-04-04 at 15.57.45



Screen Shot 2022-04-04 at 15.58.01



Screen Shot 2022-04-04 at 15.58.10



Screen Shot 2022-04-04 at 15.58.18



Screen Shot 2022-04-04 at 15.58.26



Screen Shot 2022-04-04 at 15.58.38



CONTACTS

Andrey Shestakov, leading yacht broker of the sales department of Shestakov Yacht Sales Inc. Shestakov Yacht Sales Inc., the official representative of the Miami/Fort Lauderdale FL headquarters.

Contact details

Email: andrey@shestakovyachtsales.com

Web: shestakovyachtsales.com/en/

Telephones

USA: +1(954)274-4435

Office hours

Monday – Saturday: **9:00 - 21:00** EDT

Sunday: **closed**

Address



Harbour Towne Marina, 850 NE 3rd St,
STE 213, Dania, FL 33004