

REVELATION — SILVERTON



Builder: SILVERTON

LOA: 42' (12.8mm)

Year Built: 2003

Beam: 14.91

Model: Sport Fisherman

Max Draft: 3' 7" (1.09mm)

Price: PRICE ON APPLICATION

Location: United States

Our experienced yacht broker, Andrey Shestakov, will help you choose and buy a yacht that best suits your needs **REVELATION — SILVERTON** from our catalogue. Presently, at Shestakov Yacht Sales Inc., we have a wide variety of yachts available on our sale's list. We also work in close contact with all the big yacht manufacturers from all over the world.

If you would like to buy a yacht **REVELATION — SILVERTON** or would like help answering any questions concerning purchasing, selling or chartering a yacht, please call **+1(954)274-4435**

TABLE OF CONTENTS

TABLE OF CONTENTS	2
SPECIFICATIONS	4
Overview	4
Basic Information	4
Dimensions	4
Speed, Capacities and Weight	4
Accommodations	4
Hull and Deck Information	5
Engine Information	5
PHOTOS	6
_SAM3603	6
_SAM3606	6
_SAM3612	6
_SAM3615	6
_SAM3618	6
_SAM3621	6
_SAM3624	7
_SAM3627	7
_SAM3630	7
_SAM3633	7
_SAM3636	7
_SAM3639	7
_SAM3642	8
_SAM3645	8
_SAM3652	8
_SAM3655	8
_SAM3661	9
_SAM3664	9

_SAM3670	9
_SAM3667	9
_SAM3673	10
_SAM3685	10
_SAM3691	10
_SAM3694	10
_SAM3697	10
_SAM3700	10
_SAM3706	11
40_silverton_silverton_profiles_4	11
40_silverton_silverton_profiles_7	11
40_silverton_silverton_profiles_11	11
40_silverton_silverton_profiles_16	12
40_silverton_silverton_profiles_17	12
CONTACTS	13
Contact details	13
Telephones	13
Office hours	13
Address	13

SPECIFICATIONS

Overview

The Silverton 42 Convertible offers incredible accommodations with luxurious appointments. A wide hardtop-crowned flybridge provides plentiful seating and storage. The command helm provides good visibility and the controls are at the captain's fingertips along with upgraded Garmin electronics . The unique molded steps are great for accessing the bridge - no more ladders to bump those knees. The cockpit is tournament ready, and with the addition of the optional Fish-Pac, owners can outfit the 42 to the gunnels. The split head and shower arrangement make cleaning up easy and is spacious enough . Schedule a showing today.

Basic Information

Category: Sport Fisherman

Model Year: 2004

Year Built: 2003

Country: United States

Dimensions

LOA: 42' (12.8mm)

Beam: 14.91

Max Draft: 3' 7" (1.09mm)

Speed, Capacities and Weight

Water Capacity: 200 Gallons

Holding Tank: 40 Gal Gallons

Fuel Capacity: 524 Gal Gallons

Accommodations

Total Cabins: 2

Total Heads: 1

Hull and Deck Information

Hull Material: Fiberglass

Engine Information

Engines: 2

Manufacturer: Caterpillar

Engine Type: Inboard

Fuel Type: Diesel

PHOTOS

_SAM3603



_SAM3606



_SAM3612



_SAM3615



_SAM3618



_SAM3621



SAM3624



SAM3627



SAM3630



SAM3633



SAM3636



SAM3639



_SAM3642



_SAM3645



_SAM3652



_SAM3655



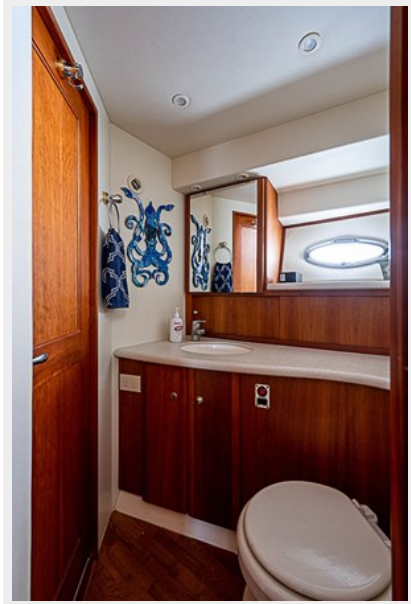
SAM3661



SAM3664



SAM3670



SAM3667



SAM3673



SAM3685



SAM3691



SAM3694



SAM3697



SAM3700



SAM3706



40_silverton_silverton_profiles_4



40_silverton_silverton_profiles_7



40_silverton_silverton_profiles_11



40_silverton_silverton_profiles_16



40_silverton_silverton_profiles_17



CONTACTS

Andrey Shestakov, leading yacht broker of the sales department of Shestakov Yacht Sales Inc. Shestakov Yacht Sales Inc., the official representative of the Miami/Fort Lauderdale FL headquarters.

Contact details

Email: andrey@shestakovyachtsales.com

Web: shestakovyachtsales.com/en/

Telephones

USA: +1(954)274-4435

Office hours

Monday – Saturday: **9:00 - 21:00** EDT

Sunday: **closed**

Address



Harbour Towne Marina, 850 NE 3rd St,
STE 213, Dania, FL 33004