

KATINA — BRODOSPLIT CROATIA



Builder: BRODOSPLIT CROATIA

Year Built: 2015

Model: Displacement

Price: PRICE ON APPLICATION

Location: Croatia

LOA: 196' 11" (60mm)

Beam: 35.03

Max Draft: 9' 7" (2.9mm)

Cruise Speed: 12 Knots Kts. (14 MPH)

Max Speed: 14.5 Knots Kts. (17 MPH)

Our experienced yacht broker, Andrey Shestakov, will help you choose and buy a yacht that best suits your needs **KATINA — BRODOSPLIT CROATIA** from our catalogue. Presently, at Shestakov Yacht Sales Inc., we have a wide variety of yachts available on our sale's list. We also work in close contact with all the big yacht manufacturers from all over the world.

If you would like to buy a yacht **KATINA — BRODOSPLIT CROATIA** or would like help answering any questions concerning purchasing, selling or chartering a yacht, please call **+1(954)274-4435**

TABLE OF CONTENTS

| | |
|------------------------------|----|
| TABLE OF CONTENTS | 2 |
| SPECIFICATIONS | 3 |
| Overview | 3 |
| Basic Information | 3 |
| Dimensions | 3 |
| Speed, Capacities and Weight | 3 |
| Accommodations | 4 |
| Hull and Deck Information | 4 |
| Engine Information | 4 |
| PHOTOS | 5 |
| CONTACTS | 12 |
| Contact details | 12 |
| Telephones | 12 |
| Office hours | 12 |
| Address | 12 |

SPECIFICATIONS

Overview

Launched in 2015, 60m KATINA boasts a huge volume with exceptional guest entertaining areas. KATINA accommodates up to 12 guests in six spacious luxuriously appointed suites positioned on the upper deck. Two identical master suites and four additional suites all feature a private balcony. Additional stand-out features include a whisky/cigar bar, large gym and a spacious sundeck with a generous dining area, two bars and Jacuzzi

The interior has been superbly penned by renowned designer Ali Getz and is characterized by a welcoming combination of dark and light patterns; with woods in satin finished oak and high gloss walnut, plush fabrics with cream neutral tones and exquisite leather.

Basic Information

Category: Displacement

Sub Category: Displacement

Model Year: 2015

Year Built: 2015

Country: Croatia

Dimensions

LOA: 196' 11" (60mm)

LWL: 174' 7" (53.2mm)

Beam: 35.03

Max Draft: 9' 7" (2.9mm)

Speed, Capacities and Weight

Cruise Speed: 12 Knots Kts. (14 MPH)

Cruise Speed Range: 4000

Max Speed: 14.5 Knots Kts. (17 MPH)

Gross Tonnage: 1212 Pounds

Water Capacity: 79420 Gallons

Fuel Capacity: 32757.33 Gal Gallons

Fuel Consumption: 85.86 Gal Gallons

Accommodations

Total Cabins: 6

Sleeps: 12

Crew Cabin: 15

Crew Berths: 15

Hull and Deck Information

Hull Material: Steel

Deck Material: Teak

Hull Configuration: Displacement w/
Bulbous Bow

Hull Color: White

Exterior Designer: Doris Zanko

Hull Designer: Doris Zanko

Interior Designer: Ali Gez

Engine Information

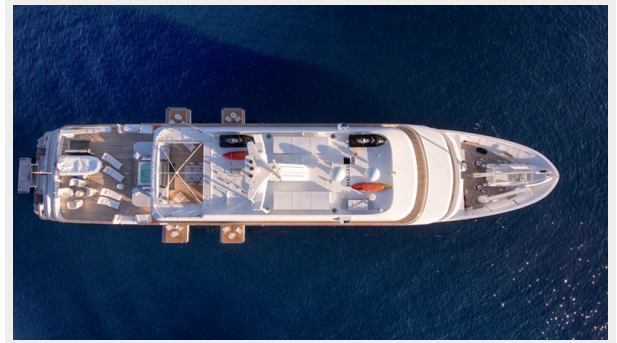
Engines: 2

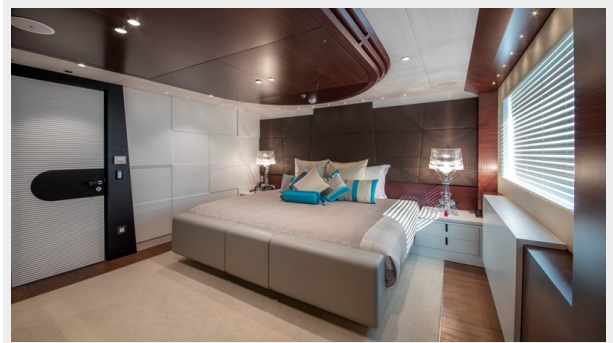
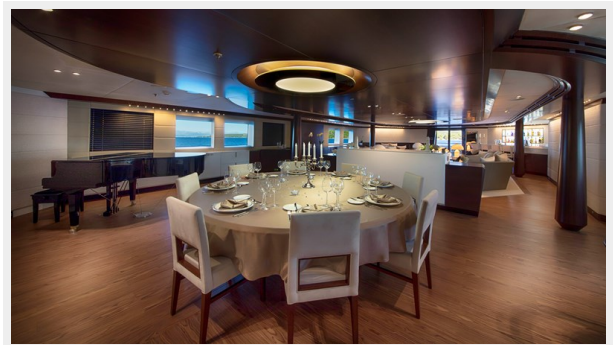
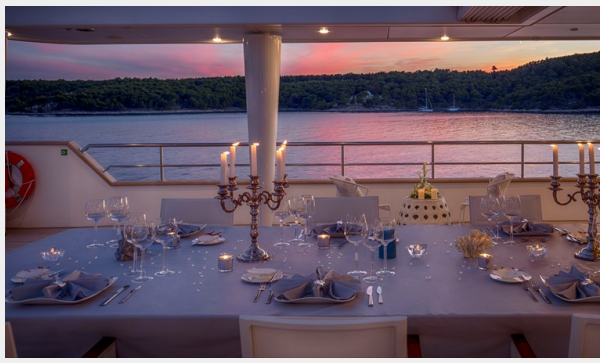
Manufacturer: Cummins KTA

Engine Type: Inboard

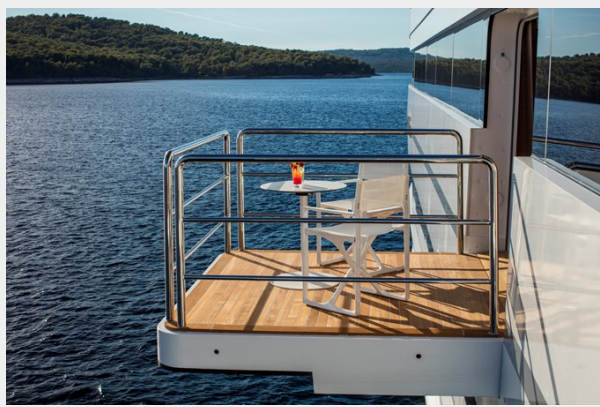
Fuel Type: Diesel

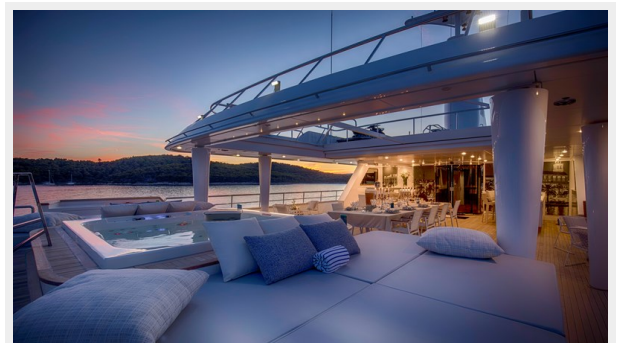
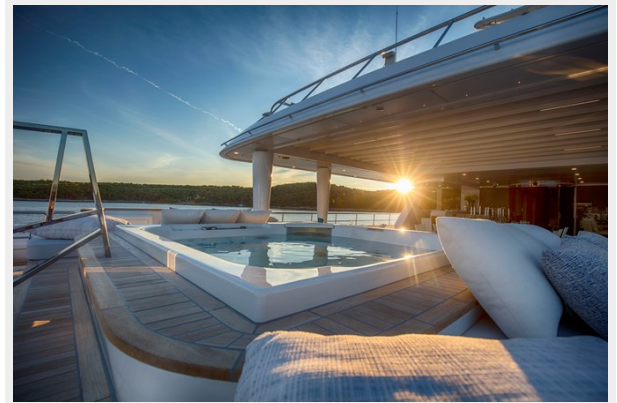
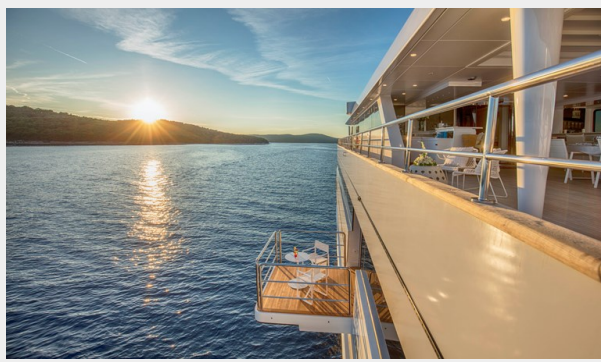
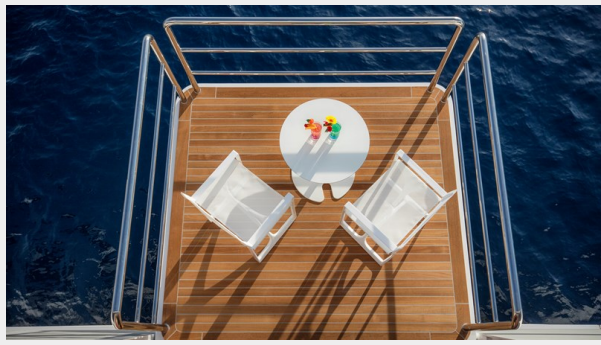
PHOTOS

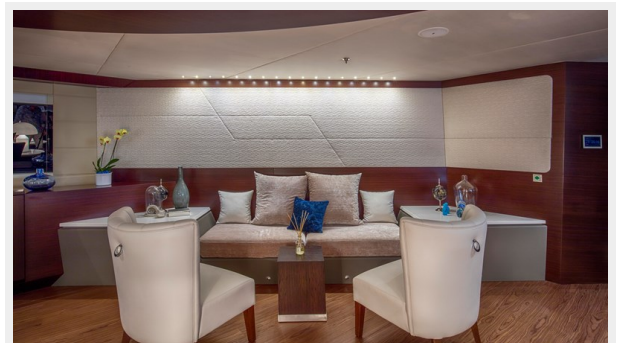
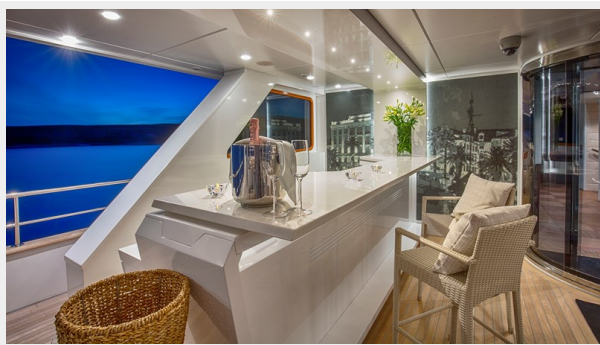


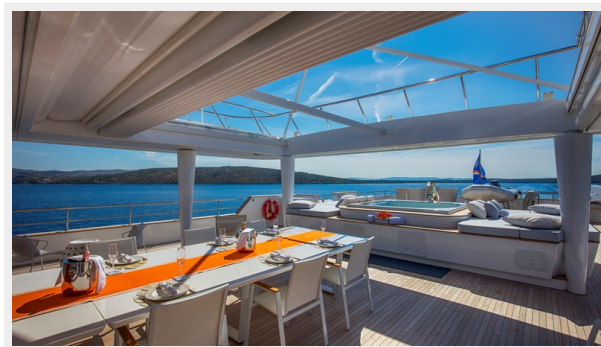












CONTACTS

Andrey Shestakov, leading yacht broker of the sales department of Shestakov Yacht Sales Inc. Shestakov Yacht Sales Inc., the official representative of the Miami/Fort Lauderdale FL headquarters.

Contact details

Email: andrey@shestakovyachtsales.com

Web: shestakovyachtsales.com/en/

Telephones

USA: +1(954)274-4435

Office hours

Monday – Saturday: **9:00 - 21:00** EDT

Sunday: **closed**

Address



Harbour Towne Marina, 850 NE 3rd St,
STE 213, Dania, FL 33004