

## TRUE NORTH — MAINSHIP



**Builder:** MAINSHIP

**Year Built:** 2006

**Model:** Cruising Yacht

**Price:** PRICE ON APPLICATION

**Location:** United States

**LOA:** 34' (10.36mm)

**Beam:** 12.25

**Max Draft:** 2' (0.61mm)

Our experienced yacht broker, Andrey Shestakov, will help you choose and buy a yacht that best suits your needs **True North — MAINSHIP** from our catalogue. Presently, at Shestakov Yacht Sales Inc., we have a wide variety of yachts available on our sale's list. We also work in close contact with all the big yacht manufacturers from all over the world.

If you would like to buy a yacht **True North — MAINSHIP** or would like help answering any questions concerning purchasing, selling or chartering a yacht, please call **+1(954)274-4435**

# TABLE OF CONTENTS

TABLE OF CONTENTS	2
SPECIFICATIONS	5
Overview	5
Basic Information	5
Dimensions	5
Speed, Capacities and Weight	5
Accommodations	5
Hull and Deck Information	6
Engine Information	6
PHOTOS	7
8258360_20220407081014657_1_XLARGE	7
8258360_20220407081018834_1_XLARGE	7
8258360_20220407081022202_1_XLARGE	7
8258360_20220407081026360_1_XLARGE	7
8258360_20220407081029894_1_XLARGE	7
8258360_20220407081035112_1_XLARGE	7
8258360_20220407081039349_1_XLARGE	8
8258360_20220407081043761_1_XLARGE	8
8258360_20220407081047441_1_XLARGE	8
8258360_20220407081051622_1_XLARGE	8
8258360_20220407081055620_1_XLARGE	8
8258360_20220407081059651_1_XLARGE	8
8258360_20220407081104151_1_XLARGE	9
8258360_20220407081107584_1_XLARGE	9
8258360_20220407081111570_1_XLARGE	9
8258360_20220407081116412_1_XLARGE	9
8258360_20220407081119799_1_XLARGE	9
8258360_20220407081123830_1_XLARGE	9

---

8258360_20220407081127814_1_XLARGE	10
8258360_20220407081132309_1_XLARGE	10
8258360_20220407081135864_1_XLARGE	10
8258360_20220407081141797_1_XLARGE	10
8258360_20220407081146719_1_XLARGE	10
8258360_20220407081151531_1_XLARGE	10
8258360_20220407081156529_1_XLARGE	11
8258360_20220407081202476_1_XLARGE	11
8258360_20220407081206588_1_XLARGE	11
8258360_20220407081210385_1_XLARGE	11
8258360_20220407081214859_1_XLARGE	11
8258360_20220407081218486_1_XLARGE	11
8258360_20220407081222407_1_XLARGE	12
8258360_20220407081227455_1_XLARGE	12
8258360_20220407081232386_1_XLARGE	12
8258360_20220407081235862_1_XLARGE	12
8258360_20220407081239603_1_XLARGE	12
8258360_20220407081244379_1_XLARGE	12
8258360_20220407081249265_1_XLARGE	13
8258360_20220407081308147_1_XLARGE	13
8258360_20220407081316285_1_XLARGE	13
8258360_20220407081312070_1_XLARGE	13
8258360_20220407081319976_1_XLARGE	14
8258360_20220407081324201_1_XLARGE	14
8258360_20220407081328245_1_XLARGE	14
8258360_20220407081333313_1_XLARGE	14
8258360_20220407081339340_1_XLARGE	14
8258360_20220407081343670_1_XLARGE	14
8258360_20220407081348119_1_XLARGE	15

---

---

8258360_20220407081353066_1_XLARGE	15
8258360_20220407081357978_1_XLARGE	15
8258360_20220407081401954_1_XLARGE	15
8258360_20220407081405751_1_XLARGE	15
CONTACTS	16
Contact details	16
Telephones	16
Office hours	16
Address	16

---

# SPECIFICATIONS

---

## Overview

---

Rum Runner Classic Powered by the highly rated Twin 240HP Yanmars, NexGen Generator with sound shield, Factory Sliding Helm Windows and Cockpit A/C, Garmin GPS/Radar/Depth, Raymarine Auto Pilot, VHF, Windlass, Vacu Flush Head, Bow Thruster, 125w Solar Panel, This is a 34' vessel with the amenities of a 40' vessel, Awl/Craft 2000 Blue Hull Sides, Loaded, Ready for Her Next Owner.

## Basic Information

---

**Category:** Cruising Yacht

**Sub Category:** Downeast

**Model Year:** 2006

**Year Built:** 2006

**Country:** United States

## Dimensions

---

**LOA:** 34' (10.36mm)

**Beam:** 12.25

**Max Draft:** 2' (0.61mm)

## Speed, Capacities and Weight

---

**Water Capacity:** 70 Gallons

**Holding Tank:** 20 Gal Gallons

**Fuel Capacity:** 250 Gal Gallons

## Accommodations

---

**Total Cabins:** 1

---

## Hull and Deck Information

---

**Hull Material:** Fiberglass

---

## Engine Information

---

**Engines:** 2

**Manufacturer:** Yanmar

**Engine Type:** Inboard

**Fuel Type:** Diesel

# PHOTOS

8258360\_20220407081014657\_1\_XLARGE



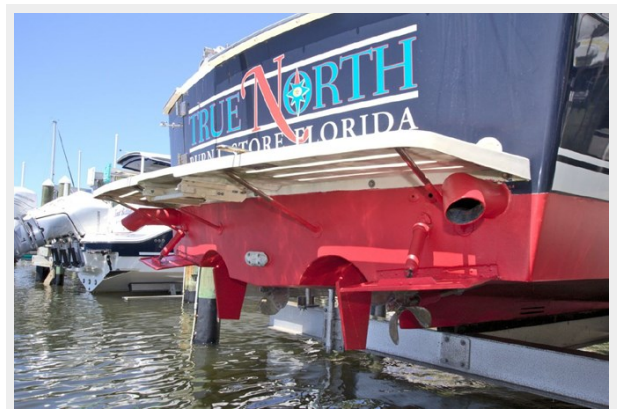
8258360\_20220407081018834\_1\_XLARGE



8258360\_20220407081022202\_1\_XLARGE



8258360\_20220407081026360\_1\_XLARGE



8258360\_20220407081029894\_1\_XLARGE



8258360\_20220407081035112\_1\_XLARGE



8258360\_20220407081039349\_1\_XLARGE



8258360\_20220407081043761\_1\_XLARGE



8258360\_20220407081047441\_1\_XLARGE



8258360\_20220407081051622\_1\_XLARGE



8258360\_20220407081055620\_1\_XLARGE



8258360\_20220407081059651\_1\_XLARGE





8258360\_20220407081104151\_1\_XLARGE



8258360\_20220407081107584\_1\_XLARGE



8258360\_20220407081111570\_1\_XLARGE



8258360\_20220407081116412\_1\_XLARGE



8258360\_20220407081119799\_1\_XLARGE



8258360\_20220407081123830\_1\_XLARGE



8258360\_20220407081127814\_1\_XLARGE



8258360\_20220407081132309\_1\_XLARGE



8258360\_20220407081135864\_1\_XLARGE



8258360\_20220407081141797\_1\_XLARGE



8258360\_20220407081146719\_1\_XLARGE



8258360\_20220407081151531\_1\_XLARGE



8258360\_20220407081156529\_1\_XLARGE



8258360\_20220407081202476\_1\_XLARGE



8258360\_20220407081206588\_1\_XLARGE



8258360\_20220407081210385\_1\_XLARGE



8258360\_20220407081214859\_1\_XLARGE



8258360\_20220407081218486\_1\_XLARGE



8258360\_20220407081222407\_1\_XLARGE



8258360\_20220407081227455\_1\_XLARGE



8258360\_20220407081232386\_1\_XLARGE



8258360\_20220407081235862\_1\_XLARGE



8258360\_20220407081239603\_1\_XLARGE



8258360\_20220407081244379\_1\_XLARGE



8258360\_20220407081249265\_1\_XLARGE



8258360\_20220407081308147\_1\_XLARGE



8258360\_20220407081316285\_1\_XLARGE

8258360\_20220407081312070\_1\_XLARGE



8258360\_20220407081319976\_1\_XLARGE



8258360\_20220407081324201\_1\_XLARGE



8258360\_20220407081328245\_1\_XLARGE



8258360\_20220407081333313\_1\_XLARGE



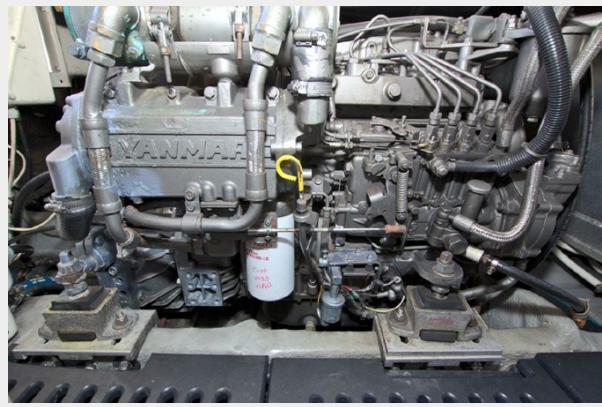
8258360\_20220407081339340\_1\_XLARGE



8258360\_20220407081343670\_1\_XLARGE



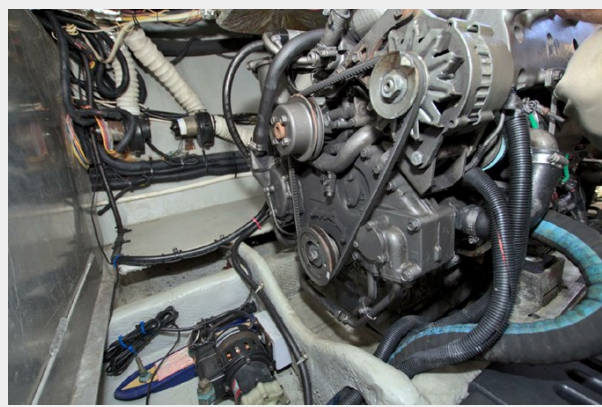
8258360\_20220407081348119\_1\_XLARGE



8258360\_20220407081353066\_1\_XLARGE



8258360\_20220407081357978\_1\_XLARGE



8258360\_20220407081401954\_1\_XLARGE



8258360\_20220407081405751\_1\_XLARGE



# CONTACTS

---

Andrey Shestakov, leading yacht broker of the sales department of Shestakov Yacht Sales Inc. Shestakov Yacht Sales Inc., the official representative of the Miami/Fort Lauderdale FL headquarters.

## Contact details

---

Email: [andrey@shestakovyachtsales.com](mailto:andrey@shestakovyachtsales.com)

Web: [shestakovyachtsales.com/en/](http://shestakovyachtsales.com/en/)

## Telephones

---

USA: +1(954)274-4435

## Office hours

---

Monday – Saturday: **9:00 - 21:00** EDT

Sunday: **closed**

## Address

---



Harbour Towne Marina, 850 NE 3rd St,  
STE 213, Dania, FL 33004