

IRELAND'S EYE — MYABCA



Builder: [MYABCA](#)

Year Built: 1998

Model: Trawler Yacht

Price: PRICE ON APPLICATION

Location: United States

LOA: 45' (13.72mm)

Beam: 14

Max Draft: 3' (0.91mm)

Our experienced yacht broker, Andrey Shestakov, will help you choose and buy a yacht that best suits your needs **Ireland's Eye — MYABCA** from **our catalogue**. Presently, at **Shestakov Yacht Sales Inc.**, we have a wide variety of yachts available on **our sale's list**. We also work in close contact with all the big **yacht manufacturers** from all over the world.

If you would like to buy a yacht **Ireland's Eye — MYABCA** or would like help answering any questions concerning purchasing, selling or chartering a yacht, please call **+1(954)274-4435**

TABLE OF CONTENTS

TABLE OF CONTENTS	2
SPECIFICATIONS	6
Overview	6
Basic Information	6
Dimensions	6
Speed, Capacities and Weight	6
Accommodations	6
Hull and Deck Information	6
Engine Information	7
PHOTOS	8
8273356_20220406064859453_1_XLARGE	8
8273356_20220407115611333_1_XLARGE	8
8273356_20220407115604224_1_XLARGE	8
8273356_20220407115556995_1_XLARGE	8
8273356_20220407115625732_1_XLARGE	8
8273356_20220407115619163_1_XLARGE	8
8273356_20220407115635191_1_XLARGE	9
8273356_20220407115642968_1_XLARGE	9
8273356_20220407115722258_1_XLARGE	9
8273356_20220407115655880_1_XLARGE	9
8273356_20220407115754468_1_XLARGE	9
8273356_20220407115759664_1_XLARGE	9
8273356_20220407115700711_1_XLARGE	10
8273356_20220407115705495_1_XLARGE	10
8273356_20220407115710397_1_XLARGE	10
8273356_20220407115715945_1_XLARGE	10
8273356_20220407115733259_1_XLARGE	10
8273356_20220407115728277_1_XLARGE	10

8273356_20220407115739027_1_XLARGE	11
8273356_20220407115744380_1_XLARGE	11
8273356_20220407115748897_1_XLARGE	11
8273356_20220407115808633_1_XLARGE	11
8273356_20220407115901010_1_XLARGE	11
8273356_20220407115814213_1_XLARGE	11
8273356_20220407115819407_1_XLARGE	12
8273356_20220407115826219_1_XLARGE	12
8273356_20220407115830684_1_XLARGE	12
8273356_20220407115835610_1_XLARGE	12
8273356_20220407115840725_1_XLARGE	12
8273356_20220407115845315_1_XLARGE	12
8273356_20220407115850627_1_XLARGE	13
8273356_20220407115855111_1_XLARGE	13
8273356_20220407120025994_1_XLARGE	13
8273356_20220407120042578_1_XLARGE	13
8273356_20220407120037350_1_XLARGE	13
8273356_20220407115911660_1_XLARGE	13
8273356_20220407120011225_1_XLARGE	14
8273356_20220407115916662_1_XLARGE	14
8273356_20220407115938864_1_XLARGE	14
8273356_20220407115926526_1_XLARGE	14
8273356_20220407115906561_1_XLARGE	14
8273356_20220407120006026_1_XLARGE	14
8273356_20220407115933334_1_XLARGE	15
8273356_20220407115955768_1_XLARGE	15
8273356_20220407120048316_1_XLARGE	15
8273356_20220407115949945_1_XLARGE	15
8273356_20220407120054181_1_XLARGE	15

8273356_20220407120104038_1_XLARGE	15
8273356_20220407120058977_1_XLARGE	16
8273356_20220407120134986_1_XLARGE	16
8273356_20220407120119563_1_XLARGE	16
8273356_20220407120114869_1_XLARGE	16
8273356_20220407120109817_1_XLARGE	16
8273356_20220407120124525_1_XLARGE	16
8273356_20220407120141969_1_XLARGE	17
8273356_20220407120129979_1_XLARGE	17
8273356_20220407120155117_1_XLARGE	17
8273356_20220407120148489_1_XLARGE	17
8273356_20220407120312383_1_XLARGE	17
8273356_20220407120016057_1_XLARGE	17
8273356_20220407120020855_1_XLARGE	18
8273356_20220407120200837_1_XLARGE	18
8273356_20220407120206967_1_XLARGE	18
8273356_20220407120215041_1_XLARGE	18
8273356_20220407120220774_1_XLARGE	18
8273356_20220407120226518_1_XLARGE	18
8273356_20220407120307108_1_XLARGE	19
8273356_20220407120255520_1_XLARGE	19
8273356_20220407120301558_1_XLARGE	19
8273356_20220407120247213_1_XLARGE	19
8273356_20220407120237483_1_XLARGE	19
8273356_20220407120232856_1_XLARGE	19
8273356_20220407120318056_1_XLARGE	20
8273356_20220407120322798_1_XLARGE	20
CONTACTS	21
Contact details	21

Telephones	21
Office hours	21
Address	21

SPECIFICATIONS

Overview

The Myabaca 45 Fly Bridge is a well built solid boat with some great features. This boat is set up as an American boat with 120v, a 8.0 Kohler genset with 321 hrs. Powered with the Volvo-Penta diesels. This is a heavy yacht and offers sea kindness with 23 Ton displacement. The bow thruster helps with docking and tight maneuvers.

Basic Information

Category: Trawler Yacht

Sub Category: Pilothouse

Model Year: 1998

Year Built: 1998

Country: United States

Dimensions

LOA: 45' (13.72mm)

Beam: 14

Max Draft: 3' (0.91mm)

Speed, Capacities and Weight

Water Capacity: 50 Gallons

Holding Tank: 40 Gal Gallons

Fuel Capacity: 300 Gal Gallons

Accommodations

Total Cabins: 2

Hull and Deck Information

Hull Material: Fiberglass

Engine Information

Engines: 2

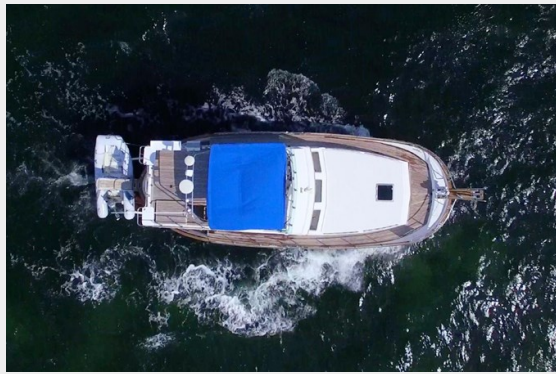
Manufacturer: Volvo Penta

Engine Type: Inboard

Fuel Type: Diesel

PHOTOS

8273356_20220406064859453_1_XLARGE 8273356_20220407115611333_1_XLARGE



8273356_20220407115604224_1_XLARGE 8273356_20220407115556995_1_XLARGE



8273356_20220407115625732_1_XLARGE 8273356_20220407115619163_1_XLARGE



8273356_20220407115635191_1_XLARGE 8273356_20220407115642968_1_XLARGE



8273356_20220407115722258_1_XLARGE 8273356_20220407115655880_1_XLARGE



8273356_20220407115754468_1_XLARGE 8273356_20220407115759664_1_XLARGE



8273356_20220407115700711_1_XLARGE 8273356_20220407115705495_1_XLARGE



8273356_20220407115710397_1_XLARGE 8273356_20220407115715945_1_XLARGE



8273356_20220407115733259_1_XLARGE 8273356_20220407115728277_1_XLARGE



8273356_20220407115739027_1_XLARGE 8273356_20220407115744380_1_XLARGE



8273356_20220407115748897_1_XLARGE 8273356_20220407115808633_1_XLARGE



8273356_20220407115901010_1_XLARGE 8273356_20220407115814213_1_XLARGE



8273356_20220407115819407_1_XLARGE 8273356_20220407115826219_1_XLARGE



8273356_20220407115830684_1_XLARGE 8273356_20220407115835610_1_XLARGE



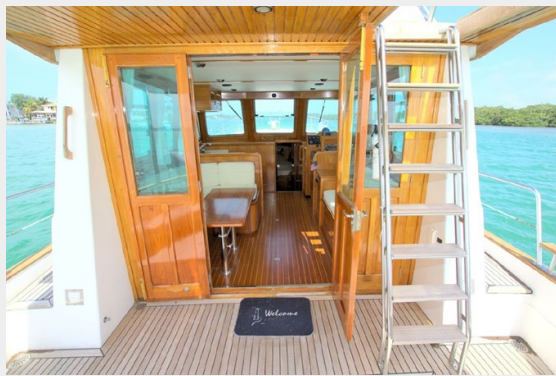
8273356_20220407115840725_1_XLARGE 8273356_20220407115845315_1_XLARGE



8273356_20220407115850627_1_XLARGE 8273356_20220407115855111_1_XLARGE



8273356_20220407120025994_1_XLARGE 8273356_20220407120042578_1_XLARGE



8273356_20220407120037350_1_XLARGE 8273356_20220407115911660_1_XLARGE



8273356_20220407120011225_1_XLARGE 8273356_20220407115916662_1_XLARGE



8273356_20220407115938864_1_XLARGE 8273356_20220407115926526_1_XLARGE



8273356_20220407115906561_1_XLARGE 8273356_20220407120006026_1_XLARGE

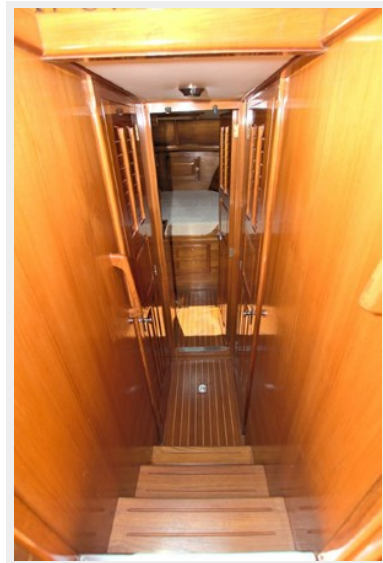


8273356_20220407115933334_1_XLARGE 8273356_20220407115955768_1_XLARGE



8273356_20220407120048316_1_XLARGE

8273356_20220407115949945_1_XLARGE



8273356_20220407120054181_1_XLARGE 8273356_20220407120104038_1_XLARGE



8273356_20220407120058977_1_XLARGE 8273356_20220407120134986_1_XLARGE



8273356_20220407120119563_1_XLARGE 8273356_20220407120114869_1_XLARGE



8273356_20220407120109817_1_XLARGE 8273356_20220407120124525_1_XLARGE



8273356_20220407120141969_1_XLARGE

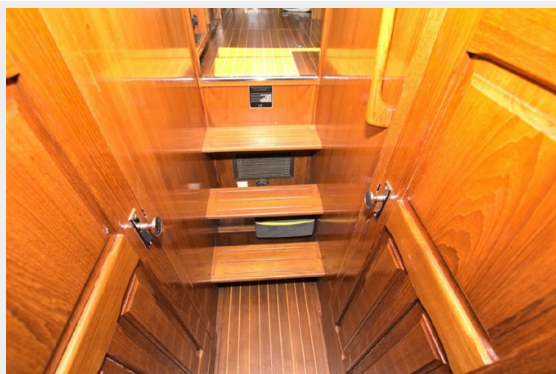
8273356_20220407120129979_1_XLARGE



8273356_20220407120155117_1_XLARGE 8273356_20220407120148489_1_XLARGE



8273356_20220407120312383_1_XLARGE 8273356_20220407120016057_1_XLARGE



8273356_20220407120020855_1_XLARGE 8273356_20220407120200837_1_XLARGE



8273356_20220407120206967_1_XLARGE 8273356_20220407120215041_1_XLARGE



8273356_20220407120220774_1_XLARGE 8273356_20220407120226518_1_XLARGE



8273356_20220407120307108_1_XLARGE 8273356_2022040712025520_1_XLARGE



8273356_20220407120301558_1_XLARGE 8273356_20220407120247213_1_XLARGE



8273356_20220407120237483_1_XLARGE 8273356_20220407120232856_1_XLARGE



8273356_20220407120318056_1_XLARGE 8273356_20220407120322798_1_XLARGE



CONTACTS

Andrey Shestakov, leading yacht broker of the sales department of Shestakov Yacht Sales Inc. Shestakov Yacht Sales Inc., the official representative of the Miami/Fort Lauderdale FL headquarters.

Contact details

Email: **andrey@shestakovyachtsales.com**

Web: shestakovyachtsales.com/en/

Telephones

USA: **+1(954)274-4435**

Office hours

Monday – Saturday: **9:00 - 21:00** EDT

Sunday: **closed**

Address



Harbour Towne Marina, 850 NE 3rd St, STE 213, Dania, FL 33004