

PAIR-A-DISE IV — MAXUM



Builder: MAXUM

Year Built: 1998

Model: Cruising Yacht

Price: PRICE ON APPLICATION

Location: United States

LOA: 37' (11.28mm)

Beam: 13

Max Draft: 3' 7" (1.09mm)

Cruise Speed: 20 Knots Kts. (23 MPH)

Max Speed: 25 Knots Kts. (29 MPH)

Our experienced yacht broker, Andrey Shestakov, will help you choose and buy a yacht that best suits your needs **PAIR-A-DISE IV — MAXUM** from our catalogue. Presently, at Shestakov Yacht Sales Inc., we have a wide variety of yachts available on our sale's list. We also work in close contact with all the big yacht manufacturers from all over the world.

If you would like to buy a yacht **PAIR-A-DISE IV — MAXUM** or would like help answering any questions concerning purchasing, selling or chartering a yacht, please call **+1(954)274-4435**

TABLE OF CONTENTS

TABLE OF CONTENTS	2
SPECIFICATIONS	6
Overview	6
Basic Information	6
Dimensions	6
Speed, Capacities and Weight	6
Accommodations	6
Hull and Deck Information	7
Engine Information	7
PHOTOS	8
2	8
3	8
4	8
5	8
6	9
7	9
9	9
8	9
10	10
11	10
12	10
13	10
14	11
15	11
16	11
17	11
18	11
19	11

20	12
21	12
22	12
23	12
25	13
24	13
26	13
27	13
28	14
29	14
30	14
31	14
32	15
33	15
34	15
35	15
36	16
37	16
38	16
39	16
40	17
41	17
42	17
43	17
44	17
45	17
46	18
47	18
48	18

49	18
50	19
51	19
52	19
53	19
54	20
55	20
56	20
57	20
58	21
59	21
60	21
61	21
62	22
63	22
64	22
65	22
66	23
67	23
68	23
69	23
70	24
71	24
72	24
73	24
74	25
CONTACTS	26
Contact details	26
Telephones	26

Office hours	26
Address	26

SPECIFICATIONS

Overview

N/A

Basic Information

Category: Cruising Yacht

Sub Category: Express

Model Year: 1998

Year Built: 1998

Country: United States

Dimensions

LOA: 37' (11.28mm)

LWL: 39' 3" (11.96mm)

Beam: 13

Max Draft: 3' 7" (1.09mm)

Speed, Capacities and Weight

Cruise Speed: 20 Knots Kts. (23 MPH)

Max Speed: 25 Knots Kts. (29 MPH)

Water Capacity: 65 Gallons

Holding Tank: 50 Gal Gallons

Fuel Capacity: 244 Gal Gallons

Accommodations

Total Cabins: 1

Total Berths: 3

Total Heads: 1

Hull and Deck Information

Hull Material: Fiberglass

Hull Configuration: Modified V-Hull

Engine Information

Engines: 2

Manufacturer: Mercruiser

Engine Type: Inboard

Fuel Type: Gas

PHOTOS

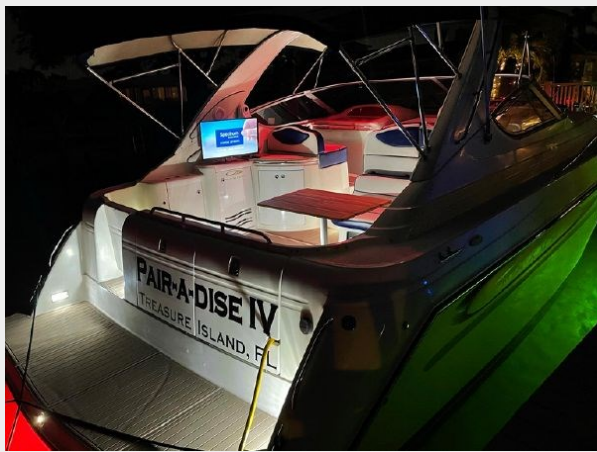
2



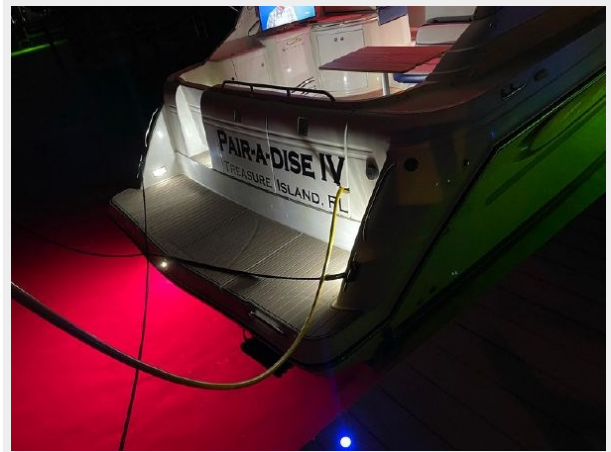
3



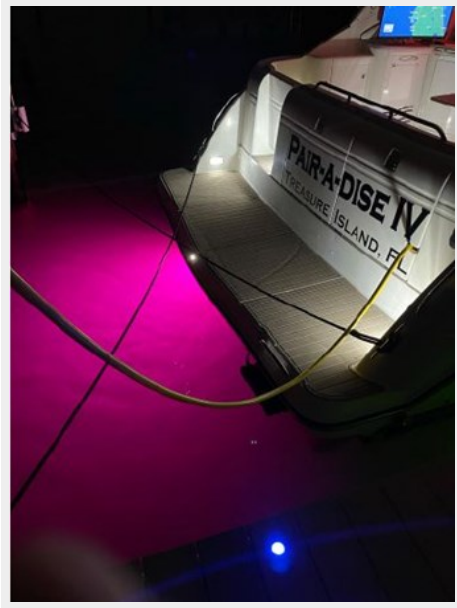
4



5



6



7



9



8



10



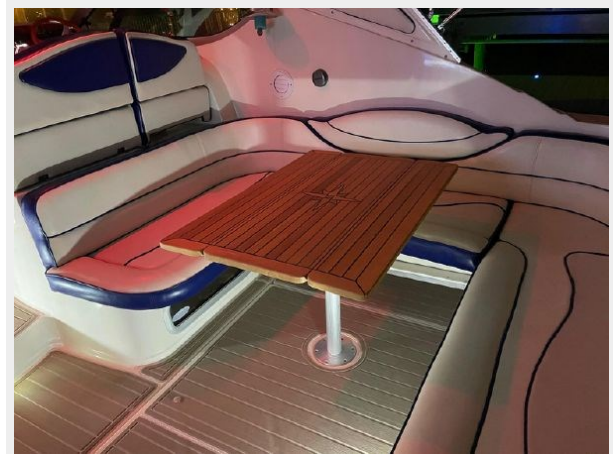
11



12



13



14



15



16



17



18



19



20



21



22



23



24



25



26



27



28



29



30



31



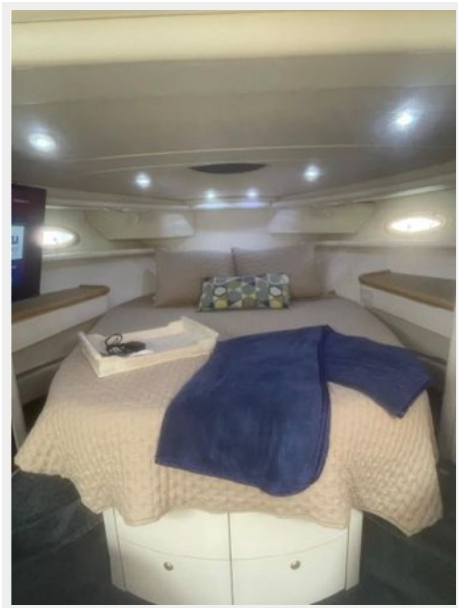
32



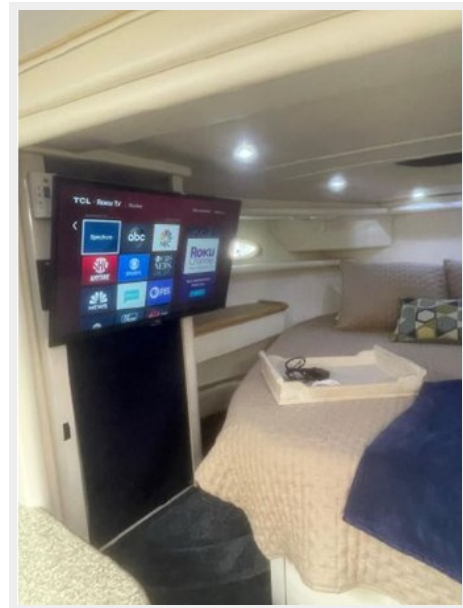
33



34



35



36



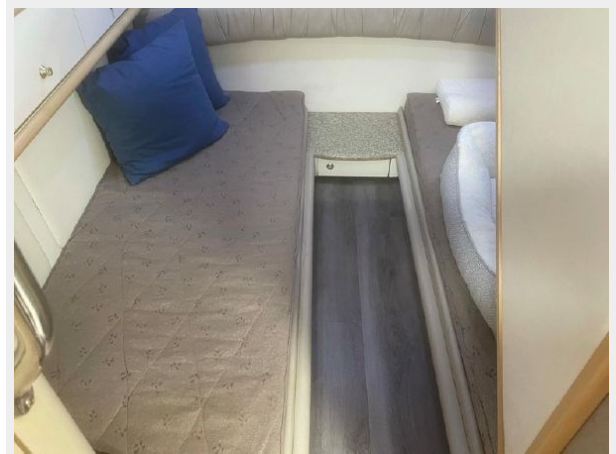
37



38



39



40



41



42



43



44



45



46



47



48



49



50



51



52



53



54



55



56



57



58



59



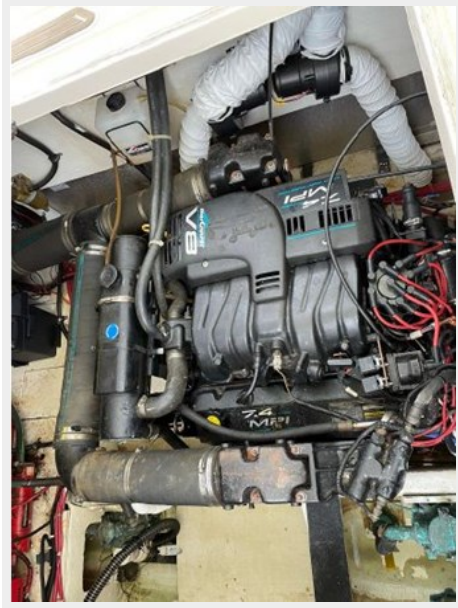
60



61



62



63



64



65



66



67



68



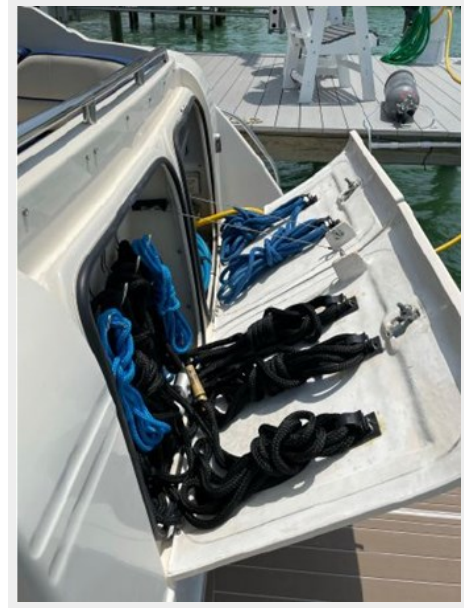
69



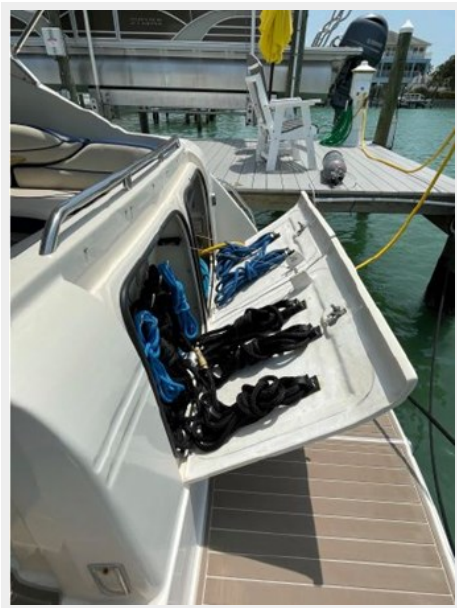
70



71



72



73



74



CONTACTS

Andrey Shestakov, leading yacht broker of the sales department of Shestakov Yacht Sales Inc. Shestakov Yacht Sales Inc., the official representative of the Miami/Fort Lauderdale FL headquarters.

Contact details

Email: andrey@shestakovyachtsales.com

Web: shestakovyachtsales.com/en/

Telephones

USA: +1(954)274-4435

Office hours

Monday – Saturday: **9:00 - 21:00** EDT

Sunday: **closed**

Address



Harbour Towne Marina, 850 NE 3rd St,
STE 213, Dania, FL 33004