

## **DORCAS ANN — DEFEVER**



**Builder:** DEFEVER

**Year Built:** 1979

**Model:** Trawler Yacht

**Price:** PRICE ON APPLICATION

**Location:** United States

**LOA:** 43' (13.11mm)

**Beam:** 14

**Min Draft:** 4' 5" (1.35mm)

**Cruise Speed:** 10 Knots Kts. (12 MPH)

**Max Speed:** 7 Knots Kts. (8 MPH)

Our experienced yacht broker, Andrey Shestakov, will help you choose and buy a yacht that best suits your needs **Dorcas Ann — DEFEVER** from **our catalogue**. Presently, at **Shestakov Yacht Sales Inc.**, we have a wide variety of yachts available on **our sale's list**. We also work in close contact with all the big **yacht manufacturers** from all over the world.

If you would like to buy a yacht **Dorcas Ann — DEFEVER** or would like help answering any questions concerning purchasing, selling or chartering a yacht, please call **+1(954)274-4435**

# TABLE OF CONTENTS

TABLE OF CONTENTS	2
SPECIFICATIONS	6
Overview	6
Basic Information	6
Dimensions	6
Speed, Capacities and Weight	6
Accommodations	6
Hull and Deck Information	6
Engine Information	6
PHOTOS	7
2_2787201_001_dorcas_ann_1979_defever_43	7
1_2787201_003_dorcas_ann_1979_defever_43	7
3_2787201_002_dorcas_ann_starboard_bow	7
4_2787201_004_drcas_ann_port_stern	7
6_2787201_007_dorcas_ann_stern_with_tender	7
5_2787201_005_dorcas_ann_bow	7
7_2787201_1003_dorcas_ann_starboard_sidedeck	8
8_2787201_1004_dorcas_ann_starboard_side_door	8
9_2787201_1005_dorcas_ann_foredeck	8
10_2787201_1006_dorcas_ann_foredeck	8
12_2787201_1008_dorcas_ann_anchor_gear	8
11_2787201_1007_dorcas_ann_foredeck	8
14_2787201_1010_dorcas_ann_foredeck	8
13_2787201_1009_dorcas_ann_windlass	8
15_2787201_1012_dorcas_ann_forward_hatch	9
16_2787201_1014_dorcas_ann_foredeck_locker	9
17_2787201_1021_dorcas_ann_sundeck	9
18_2787201_1022_dorcas_ann_whicker_set	9

---

19_2787201_1023_dorcas_ann_sundeck	9
20_2787201_1024_dorcas_ann_whicker_set_starboard	9
22_2787201_1032_dorcas_ann_flybridge_port_view	9
21_2787201_1025_dorcas_ann_sundeck_forward_view	9
24_2787201_1036_flybridge_starboard_view	10
23_2787201_1034_dorcas_ann_flybridge_port_seating	10
26_2787201_1041_dorcas_ann_companionway	10
25_2787201_1038_dorcas_ann_flybridge_starboard_seating	10
28_2787201_1044_dorcas_ann_saloon_wide_angle	10
27_2787201_1043_dorcas_ann_saloon_forward_view	10
29_2787201_1045_dorcas_ann_saloon_aft_view	10
30_2787201_1046_dorcas_ann_saloon	10
31_2787201_1047_dorcas_ann_lower_helm	11
32_2787201_1048_dorcas_ann_lower_helm_controls	11
34_2787201_1050_dorcas_ann_galley	11
33_2787201_1049_dorcas_ann_saloon_tv	11
36_2787201_1052_dorcas_ann_galley	11
35_2787201_1051_dorcas_ann_galley	11
37_2787201_1053_dorcas_ann_galley	11
38_2787201_1054_galley_cook_top	11
40_2787201_1056_dorcas_ann_galley	12
39_2787201_1055_galley_cook_top	12
41_2787201_1057_dorcas_ann_coffee_maker	12
42_2787201_1058_dorcas_ann_microwave	12
44_2787201_1060_dorcas_ann_refrigerator	12
43_2787201_1059_dorcas_ann_microwave	12
45_2787201_1061_dorcas_ann_refrigerator	13
46_2787201_1062_dorcas_ann_dishwasher	13
47_2787201_1063_dorcas_ann_dishwasher	13

---

---

48_2787201_1064_dorcas_ann_stovetop_hood	13
49_2787201_1071_dorcas_ann_port_salon	13
50_2787201_1071_dorcas_ann_starboard_salon	13
52_2787201_1073_dorcas_ann_salon_table	13
51_2787201_1072_dorcas_ann_salon_setee	13
53_2787201_1081_dorcas_ann_foreward_cabin_entrance	14
54_2787201_1082_dorcas_ann_v_berth	14
55_2787201_1083_dorcas_ann_v_berth_and_guest_head	14
56_2787201_1084_dorcas_ann_v_berth_starboard	14
58_2787201_1086_dorcas_ann_v_berth	14
57_2787201_1085_dorcas_ann_v_berth_port	14
59_2787201_1087_dorcas_ann_guest_head_wide	15
60_2787201_1088_dorcas_ann_guest_head	15
62_2787201_1091_dorcas_ann_engine_room_entrance	15
61_2787201_1089_dorcas_ann_guest_head	15
64_2787201_1093_dorcas_ann_engine_room_forward	15
63_2787201_1092_dorcas_ann_engine_room	15
66_2787201_1095_dorcas_ann_port_engine	15
65_2787201_1094_dorcas_ann_starboard_engine	15
67_2787201_1096_dorcas_ann_starboard_fuel_tank	16
68_2787201_1097_dorcas_ann_port_fuel_tank	16
69_2787201_1098_dorcas_ann_generator	16
70_2787201_1099_dorcas_ann_battery_chargers_and_inverter	16
72_2787201_1101_dorcas_ann_washer_dryer	16
71_2787201_1100dorcas_ann_batteries	16
74_2787201_1205_dorcas_ann_tender_1	17
73_2787201_1201_dorcas_ann_on_the_hard	17
75_2787201_1205_dorcas_ann_tender_2	17
CONTACTS	18

---

Contact details	18
Telephones	18
Office hours	18
Address	18

---

## SPECIFICATIONS

---

### Overview

---

**Dorcias Ann** is an excellent example of the classic design DeFevers are known for. Heavily constructed on a solid fiberglass displacement hull, the DeFever 43 is a flush deck design with the aft deck and side decks on the same level. The result is a boat with slightly higher freeboard, very spacious aft deck area and large, full width master stateroom. **Dorcias Ann** has just been refit with new fuel tanks, batteries and wiring and much more. Other recent updates include fully enclosed flybridge and sundeck, Northern Lights generator, full size washer dryer, top of the line galley appliances including dishwasher, stainless steel water heater and vacuflush heads. The current owners have enjoyed cruising the East coast and Chesapeake Bay and have kept her well maintained. They have worked hard this winter to finish the most recent refit and have her ready to show in North Myrtle Beach SC. Please see all of the listing for full details and list of amenities and equipment.

### Basic Information

---

**Category:** Trawler Yacht

**Model Year:** 1979

**Year Built:** 1979

**Country:** United States

### Dimensions

---

**LOA:** 43' (13.11mm)

**Beam:** 14

**Min Draft:** 4' 5" (1.35mm)

### Speed, Capacities and Weight

---

**Cruise Speed:** 10 Knots Kts. (12 MPH) **Max Speed:** 7 Knots Kts. (8 MPH)

**Water Capacity:** 250 Gallons

**Holding Tank:** 50 Gal Gallons

**Fuel Capacity:** 600 Gal Gallons

### Accommodations

---

**Total Cabins:** 2

**Sleeps:** 4

**Total Heads:** 2

### Hull and Deck Information

---

**Hull Material:** Fiberglass

### Engine Information

---

**Engines:** 2

**Manufacturer:** Ford Lehman

**Engine Type:** Inboard

**Fuel Type:** Diesel

## PHOTOS

1\_2787201\_003\_dorcas\_ann\_1979\_defever\_43



2\_2787201\_001\_dorcas\_ann\_1979\_defever\_43



3\_2787201\_002\_dorcas\_ann\_starboard\_bow



4\_2787201\_004\_drcas\_ann\_port\_stern



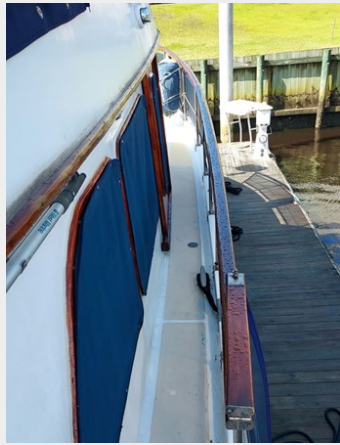
5\_2787201\_005\_dorcas\_ann\_bow



6\_2787201\_007\_dorcas\_ann\_stern\_with\_tender



7\_2787201\_1003\_dorcas\_ann\_starboard\_sidedeck



8\_2787201\_1004\_dorcas\_ann\_starboard\_side\_door



9\_2787201\_1005\_dorcas\_ann\_foredeck



10\_2787201\_1006\_dorcas\_ann\_foredeck



11\_2787201\_1007\_dorcas\_ann\_foredeck



12\_2787201\_1008\_dorcas\_ann\_anchor\_gear



13\_2787201\_1009\_dorcas\_ann\_windlass

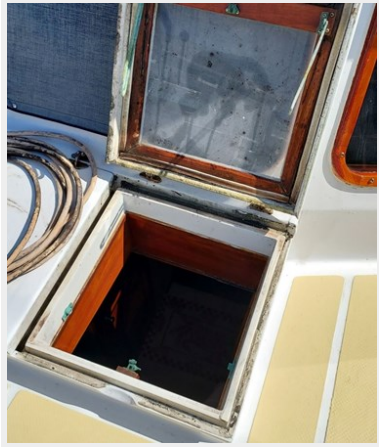


14\_2787201\_1010\_dorcas\_ann\_foredeck





15\_2787201\_1012\_dorcas\_ann\_forward\_hatch



16\_2787201\_1014\_dorcas\_ann\_foredeck\_locker



17\_2787201\_1021\_dorcas\_ann\_sundeck



18\_2787201\_1022\_dorcas\_ann\_whicker\_set



19\_2787201\_1023\_dorcas\_ann\_sundeck



20\_2787201\_1024\_dorcas\_ann\_whicker\_set\_starboard



21\_2787201\_1025\_dorcas\_ann\_sundeck\_forward\_view 22\_2787201\_1032\_dorcas\_ann\_flybridge\_port\_view



23\_2787201\_1034\_dorcas\_ann\_flybridge\_port\_seating



24\_2787201\_1036\_flybridge\_starboard\_view



26\_2787201\_1041\_dorcas\_ann\_companionway



25\_2787201\_1038\_dorcas\_ann\_flybridge\_starboard\_seating



27\_2787201\_1043\_dorcas\_ann\_salon\_forward\_view



28\_2787201\_1044\_dorcas\_ann\_salon\_wide\_angle



29\_2787201\_1045\_dorcas\_ann\_salon\_aft\_view



30\_2787201\_1046\_dorcas\_ann\_salon



31\_2787201\_1047\_dorcas\_ann\_lower\_helm



32\_2787201\_1048\_dorcas\_ann\_lower\_helm\_controls



33\_2787201\_1049\_dorcas\_ann\_salon\_tv



34\_2787201\_1050\_dorcas\_ann\_galley



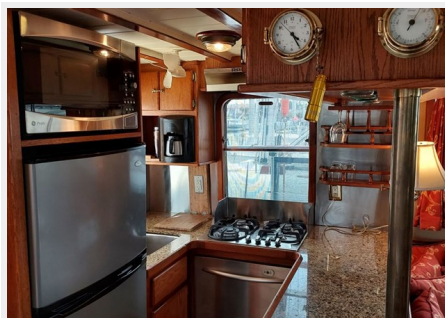
35\_2787201\_1051\_dorcas\_ann\_galley



36\_2787201\_1052\_dorcas\_ann\_galley



37\_2787201\_1053\_dorcas\_ann\_galley



38\_2787201\_1054\_galley\_cook\_top



39\_2787201\_1055\_galley\_cook\_top



40\_2787201\_1056\_dorcas\_ann\_galley



41\_2787201\_1057\_dorcas\_ann\_coffee\_maker



42\_2787201\_1058\_dorcas\_ann\_microwave



43\_2787201\_1059\_dorcas\_ann\_microwave



44\_2787201\_1060\_dorcas\_ann\_refrigerator



45\_2787201\_1061\_dorcas\_ann\_refrigerator



46\_2787201\_1062\_dorcas\_ann\_dishwasher



47\_2787201\_1063\_dorcas\_ann\_dishwasher



48\_2787201\_1064\_dorcas\_ann\_stovetop\_hood



49\_2787201\_1071\_dorcas\_ann\_port\_salon



50\_2787201\_1071\_dorcas\_ann\_starboard\_salon



51\_2787201\_1072\_dorcas\_ann\_salon\_setee



52\_2787201\_1073\_dorcas\_ann\_salon\_table



53\_2787201\_1081\_dorcas\_ann\_foreward\_cabin\_entrance



54\_2787201\_1082\_dorcas\_ann\_v\_berth



55\_2787201\_1083\_dorcas\_ann\_v\_berth\_and\_guest\_head



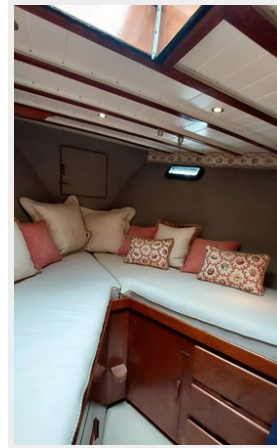
56\_2787201\_1084\_dorcas\_ann\_v\_berth\_starboard



57\_2787201\_1085\_dorcas\_ann\_v\_berth\_port



58\_2787201\_1086\_dorcas\_ann\_v\_berth



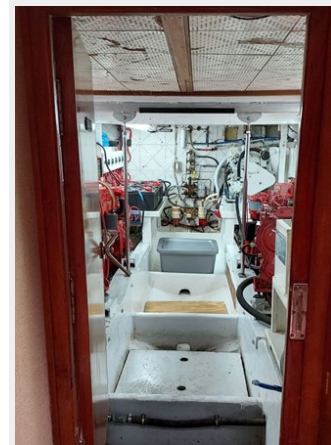
59\_2787201\_1087\_dorcas\_ann\_guest\_head\_wide



60\_2787201\_1088\_dorcas\_ann\_guest\_head



62\_2787201\_1091\_dorcas\_ann\_engine\_room\_entrance



61\_2787201\_1089\_dorcas\_ann\_guest\_head



63\_2787201\_1092\_dorcas\_ann\_engine\_room



64\_2787201\_1093\_dorcas\_ann\_engine\_room\_forward



65\_2787201\_1094\_dorcas\_ann\_starboard\_engine



66\_2787201\_1095\_dorcas\_ann\_port\_engine



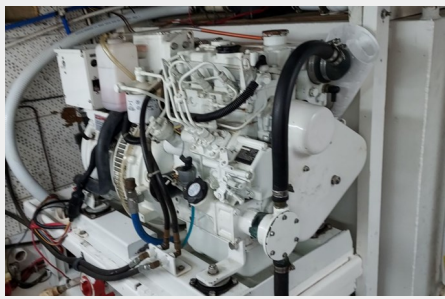
67\_2787201\_1096\_dorcas\_ann\_starboard\_fuel\_tank



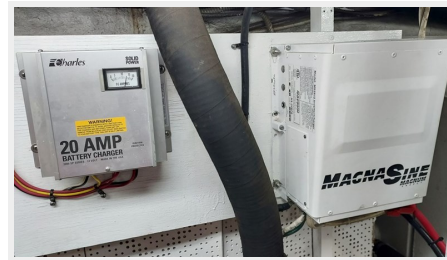
68\_2787201\_1097\_dorcas\_ann\_port\_fuel\_tank



69\_2787201\_1098\_dorcas\_ann\_generator



70\_2787201\_1099\_dorcas\_ann\_battery\_chargers\_and\_inverter



71\_2787201\_1100dorcas\_ann\_batteries



72\_2787201\_1101\_dorcas\_ann\_washer\_dryer





73\_2787201\_1201\_dorcas\_ann\_on\_the\_hard



74\_2787201\_1205\_dorcas\_ann\_tender\_1



75\_2787201\_1205\_dorcas\_ann\_tender\_2



## CONTACTS

---

Andrey Shestakov, leading yacht broker of the sales department of Shestakov Yacht Sales Inc. Shestakov Yacht Sales Inc., the official representative of the Miami/Fort Lauderdale FL headquarters.

### Contact details

---

Email: [andrey@shestakovyachtsales.com](mailto:andrey@shestakovyachtsales.com)

Web: [shestakovyachtsales.com/en/](http://shestakovyachtsales.com/en/)

### Telephones

---

USA: +1(954)274-4435

### Office hours

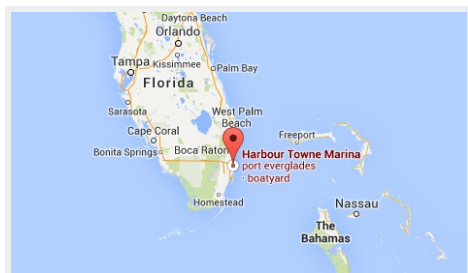
---

Monday - Saturday: **9:00 - 21:00** EDT

Sunday: **closed**

### Address

---



Harbour Towne Marina, 850 NE 3rd St, STE 213, Dania, FL 33004