

SWEET DAY — CAMANO



Builder: CAMANO

Year Built: 1996

Model: Trawler Yacht

Price: PRICE ON APPLICATION

Location: United States

LOA: 31' (9.45mm)

Beam: 10.5

Cruise Speed: 8 Knots Kts. (9 MPH)

Max Speed: 12 Knots Kts. (14 MPH)

Our experienced yacht broker, Andrey Shestakov, will help you choose and buy a yacht that best suits your needs **Sweet Day — CAMANO** from **our catalogue**. Presently, at **Shestakov Yacht Sales Inc.**, we have a wide variety of yachts available on **our sale's list**. We also work in close contact with all the big **yacht manufacturers** from all over the world.

If you would like to buy a yacht **Sweet Day — CAMANO** or would like help answering any questions concerning purchasing, selling or chartering a yacht, please call **+1(954)274-4435**

TABLE OF CONTENTS

TABLE OF CONTENTS	2
SPECIFICATIONS	5
Overview	5
Basic Information	6
Dimensions	6
Speed, Capacities and Weight	7
Accommodations	7
Hull and Deck Information	7
Engine Information	7
PHOTOS	8
image0	8
image1	8
image2	8
image3	8
image4	9
image5	9
image6	9
image8	9
image10	10
image11	10
image13	10
image14	11
image17	11
image19	12
image20	12
image21	12
image22	12
image24	13

image25	13
image26	13
image27	13
image28	14
image29	14
image7	14
image15	14
image23	15
image0	15
image1	15
image2	15
image3	15
image4	15
4AE33BE2-69E7-40B3-A940-AB5D1633E81C	16
image5	16
5C6C3E3A-A782-45CA-8FC1-CFC3F59BDD95_1_105_c	16
7D857AFE-FFC4-43A4-B6D3-70CA4B7D997E	16
7EC85E33-C4BB-4DD9-BD4E-EB036DD3D749_1_105_c	16
8E994082-2F07-4CFC-BF34-4BE20F880DE9_1_105_c	16
9A8667E3-6D89-4E6A-B69F-0F3A91506AF9_1_201_a	17
8FDB8500-5FB9-44C6-A314-0106C90DC945_1_105_c	17
119A2038-13A9-4741-934D-48AEE53DEF50_1_105_c	17
639EEFCB-43D6-4170-837D-DD5BB5D9EE7E	17
845F154C-903B-49EE-B9A6-B10389D24E1A_1_105_c	18
29539DB4-BD50-4D17-9E91-BBC3E6AC8E7E_1_105_c	18
870128F1-B06E-4971-B907-F77A40B7F72A	18
7002617F-D6FE-48B2-BF86-C5EAB072B427_1_105_c	18
BF2BCF4B-2223-4C4F-A2AC-3FF825D59AA2	19
90445488-6B28-4E4A-A8C7-DBC1E513F049	19

C1F6AEB6-D28D-41BF-8247-C00196BC94BA_1_105_c	19
CFA57C18-8DCC-4FE6-9167-ED007C4D0082	19
D6E02E5A-D7F5-4829-AD56-EB1C2EBC5528_1_105_c	20
D601747A-B2A4-4235-8925-CCFFF0A66572_1_105_c	20
FD6CEB79-4F76-4968-9C3E-80751905DC12	20
E3F0BEF8-7DCF-4E62-87AF-6B8C6CBBCE3F_1_105_c	20
CONTACTS	21
Contact details	21
Telephones	21
Office hours	21
Address	21

SPECIFICATIONS

Overview

- **Dinghy**

Hard or Rib - Rib

Dinghy - AB Lamina 9 Aluminum Hull (9 ft, 4'11' Beam) (new Spring 2021)

Outboard -Yamaha 9.9 HP 4 stroke Outboard Engine (newly installed Spring 2021)

Davits -Olsson Davits (newly installed Spring 2021)

Fuel Capacity - 3 gallon tank

- **Electronics**

Chart plotter - 2 (Lower Helm Garmin 742; Upper Helm 942xs) (newly installed Spring 2021)

VHF Radio - Standard Horizon Gx1800 Fixed Mount VHF & Standard Horizon Wired Remote Access Microphone Ram4 (newly installed Fall 2021)

Radar - Garmin GMR 18 Hd+ Radar (newly installed Spring 2021)

Autopilot - Simrad Auto Pilot AP21

AIS - em-trak B924 Class B CSTDMA AIS Transponder with Integrated Splitter, Wi-Fi and Bluetooth (newly installed Spring 2021)

Repeaters - N/A

Deck

Canvas - Canvas Bimini Top 2018

Cockpit Cushions - Reupholstered Spring 2021

Cockpit Table - Yes

Teak - No

Cockpit Shower - Wethead and outdoor shower

- **Spare Parts**

- 5 30 micron Racor filters
- 1 oil filter sierra 18-7926
- 1 new Volvo Penta engine belt
- 1 oil filter sierra 18-7884
- 1 Kubota fuel filter for generator
- 1 new rule mate 800 gph bilge pump
- 1 new Volvo Penta fuel filter
- Dinghy patch kit, spare fuel hose fitting
- 2 new Volvo Penta impellers
- 2 new 10 micron Volvo Penta Racor filters
- Spare zinc set
- Dock lines
- Fenders
- Lifejackets
- 1 spare alternator
- 1 spare starter

Batteries

- House - Lead Acid: Total 410 Amp Hours (newly installed Spring 2021)
- Engine -1 Flooded Lead Acid Starter Battery (newly installed Summer 2021)
- Anchor/Rode: 35 lb galvanized steel Mantus Anchor. 75 ft. chain and 225 foot rope (newly installed Spring 2021)

Basic Information

Category: Trawler Yacht

Sub Category: Long Range Cruiser

Model Year: 1996

Year Built: 1996

Country: United States

Dimensions

LOA: 31' (9.45mm)

Beam: 10.5

Speed, Capacities and Weight

Cruise Speed: 8 Knots Kts. (9 MPH)

Max Speed: 12 Knots Kts. (14 MPH)

Water Capacity: 77 Gallons

Fuel Capacity: 100 Gal Gallons

Accommodations

Total Cabins: 1

Hull and Deck Information

Hull Material: Fiberglass

Deck Material: Fiberglass

Hull Configuration: Full
Displacement/Planing Hull

Hull Color: White

Hull Designer: Camano

Engine Information

Engines: 1

Manufacturer: Volvo Penta

Engine Type: Inboard

Fuel Type: Diesel

PHOTOS

image0



image1

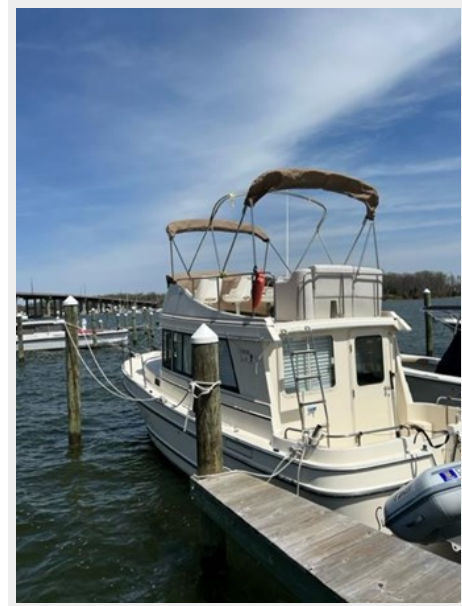


image2



image3



image4



image5



image6



image8



image10



image11



image13

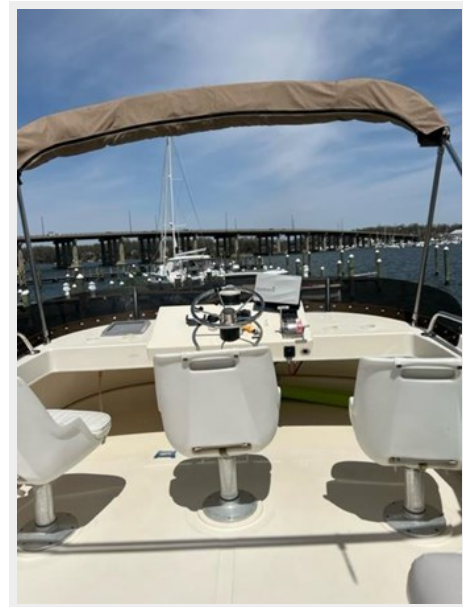


image14



image17

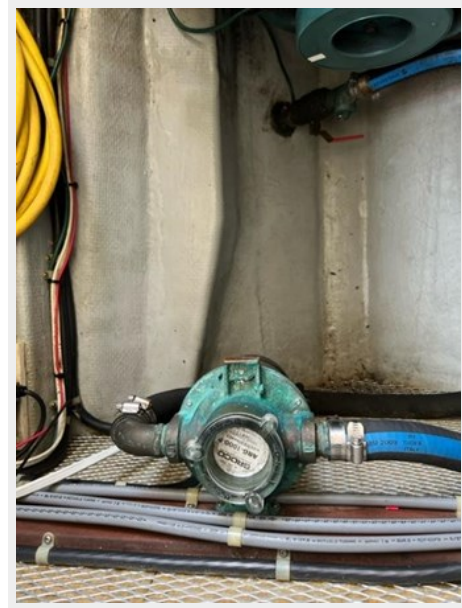


image19



image20



image21



image22



image24



image25



image26



image27



image28



image29



image7

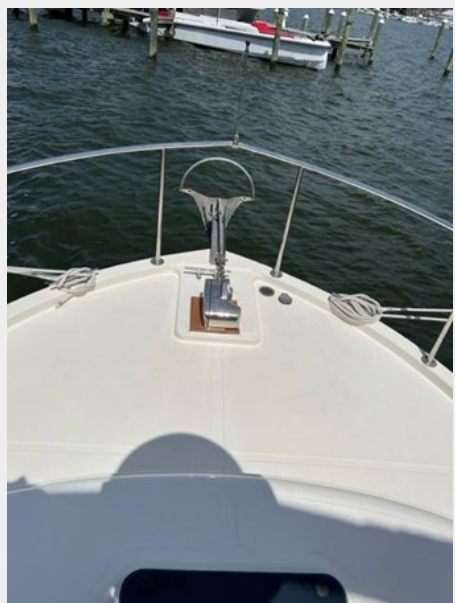


image15

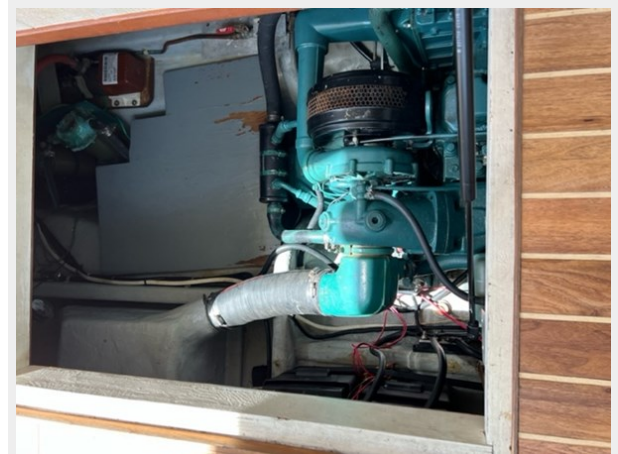


image23



image0



image1



image2



image3



image4



image5



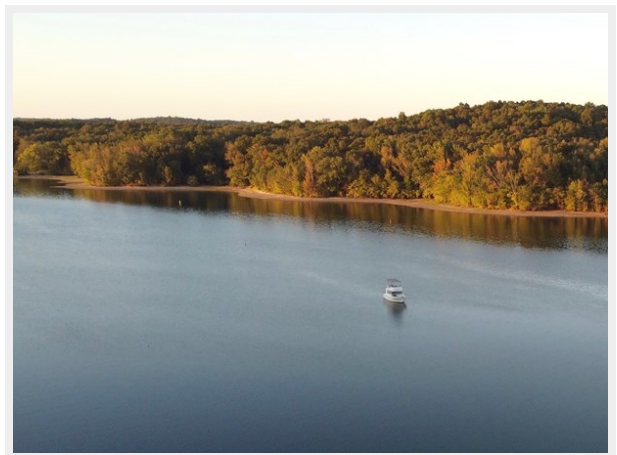
4AE33BE2-69E7-40B3-A940-AB5D1633E81C



5C6C3E3A-A782-45CA-8FC1-CFC3F59BDD95_1_105_c



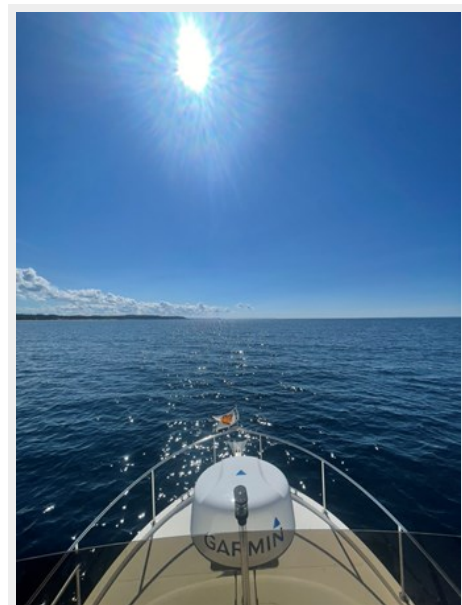
7D857AFE-FFC4-43A4-B6D3-70CA4B7D997E



7EC85E33-C4BB-4DD9-BD4E-EB036DD3D749_1_105_c



8E994082-2F07-4CFC-BF34-4BE20F880DE9_1_105_c



8FDB8500-5FB9-44C6-A314-0106C90DC945_1_105_c



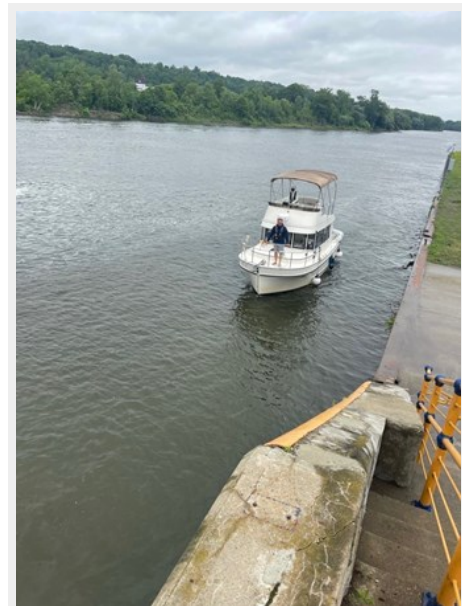
9A8667E3-6D89-4E6A-B69F-0F3A91506AF9_1_201_a



119A2038-13A9-4741-934D-48AEE53DEF50_1_105_c



639EEFCB-43D6-4170-837D-DD5BB5D9EE7E



**845F154C-903B-49EE-B9A6-
B10389D24E1A_1_105_c**



**29539DB4-BD50-4D17-9E91-
BBC3E6AC8E7E_1_105_c**



**870128F1-B06E-4971-B907-
F77A40B7F72A**



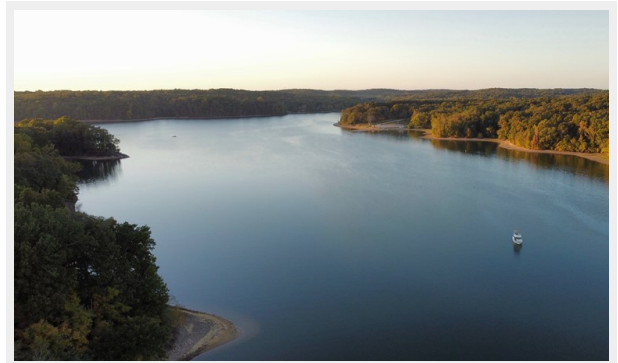
**7002617F-D6FE-48B2-BF86-
C5EAB072B427_1_105_c**



**90445488-6B28-4E4A-A8C7-
DBC1E513F049**



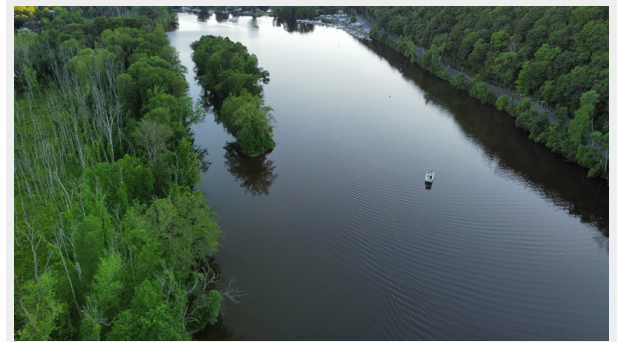
**BF2BCF4B-2223-4C4F-A2AC-
3FF825D59AA2**



**C1F6AEB6-D28D-41BF-8247-
C00196BC94BA_1_105_c**



**CFA57C18-8DCC-4FE6-9167-
ED007C4D0082**



**D6E02E5A-D7F5-4829-AD56-
EB1C2EBC5528_1_105_c**



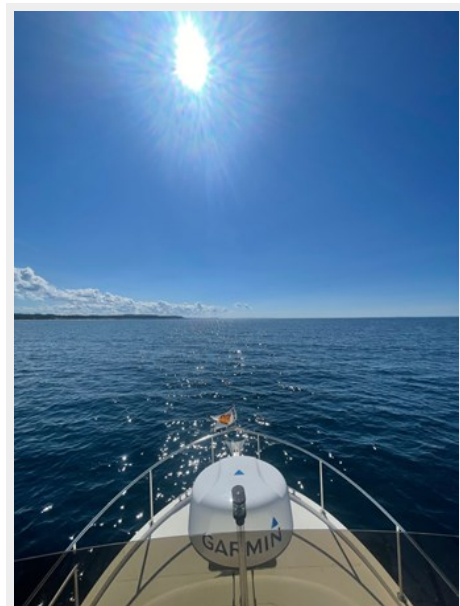
**D601747A-B2A4-4235-8925-
CCFFF0A66572_1_105_c**



**E3F0BEF8-7DCF-4E62-87AF-
6B8C6CBBCE3F_1_105_c**



**FD6CEB79-4F76-4968-9C3E-
80751905DC12**



CONTACTS

Andrey Shestakov, leading yacht broker of the sales department of Shestakov Yacht Sales Inc. Shestakov Yacht Sales Inc., the official representative of the Miami/Fort Lauderdale FL headquarters.

Contact details

Email: **andrey@shestakovyachtsales.com**

Web: shestakovyachtsales.com/en/

Telephones

USA: **+1(954)274-4435**

Office hours

Monday – Saturday: **9:00 - 21:00** EDT

Sunday: **closed**

Address



Harbour Towne Marina, 850 NE 3rd St, STE 213, Dania, FL 33004