

REEL STEEL — TIARA



Builder: TIARA

Year Built: 1983

Model: Sport Fisherman

Price: PRICE ON APPLICATION

Location: United States

LOA: 33' 9" (10.29mm)

Beam: 12

Min Draft: 2' 9" (0.84mm)

Our experienced yacht broker, Andrey Shestakov, will help you choose and buy a yacht that best suits your needs **Reel Steel — TIARA** from our catalogue. Presently, at Shestakov Yacht Sales Inc., we have a wide variety of yachts available on our sale's list. We also work in close contact with all the big yacht manufacturers from all over the world.

If you would like to buy a yacht **Reel Steel — TIARA** or would like help answering any questions concerning purchasing, selling or chartering a yacht, please call **+1(954)274-4435**

TABLE OF CONTENTS

TABLE OF CONTENTS	2
SPECIFICATIONS	5
Overview	5
Basic Information	5
Dimensions	6
Speed, Capacities and Weight	6
Accommodations	6
Hull and Deck Information	6
Engine Information	6
PHOTOS	7
2	7
3	7
4	7
5	7
6	7
7	7
8	8
9	8
10	8
11	8
12	8
13	8
14	9
15	9
16	9
17	9
18	9
19	9

20	10
21	10
22	10
23	10
24	10
25	10
26	11
27	11
28	11
29	11
30	11
31	11
32	12
33	12
34	12
35	12
36	12
37	12
38	13
39	13
40	13
41	13
42	13
43	13
44	14
45	14
46	14
47	14
CONTACTS	15

Contact details	15
Telephones	15
Office hours	15
Address	15

SPECIFICATIONS

Overview

2010 Repower/Refurbished

This Tiara 3100 was repowered with 2010 Yammars. These engines have just over 1600 hours and have been meticulously maintained! Service records provided with an accepted offer. The boat has just had a survey where she came in with a \$115,000 value. The survey is available to bonafide buyers. You have to see this boat to appreciate it. The list of enhancements and new components is very long. Shown by appointment only. Call to set an appointment. You WILL NOT be disappointed.

New in 2021

Engine Harness completely rewired

Autopilot added to tower

Complete bottom job including 2 coats of paint and zincs

All new gauges on upper and lower helms

6 brand new batteries April 2022

New throttle and shift cables upper and lower helms

New VHF radios upper and lower helms

Rebuilt steering boxes upper and lower helms

Basic Information

Category: Sport Fisherman

Model Year: 1983

Year Built: 1983

Country: United States

Dimensions

LOA: 33' 9" (10.29mm)

Beam: 12

Min Draft: 2' 9" (0.84mm)

Speed, Capacities and Weight

Water Capacity: 36 Gallons

Fuel Capacity: 300 Gal Gallons

Accommodations

Total Cabins: 1

Total Heads: 1

Hull and Deck Information

Hull Material: Fiberglass

Engine Information

Engines: 1

Manufacturer: Unknown

PHOTOS

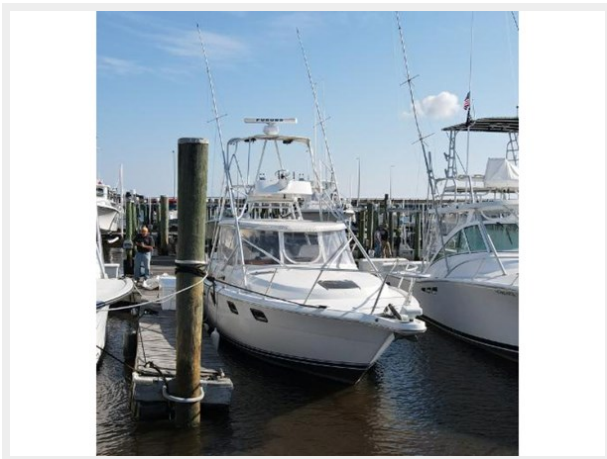
2



3



4



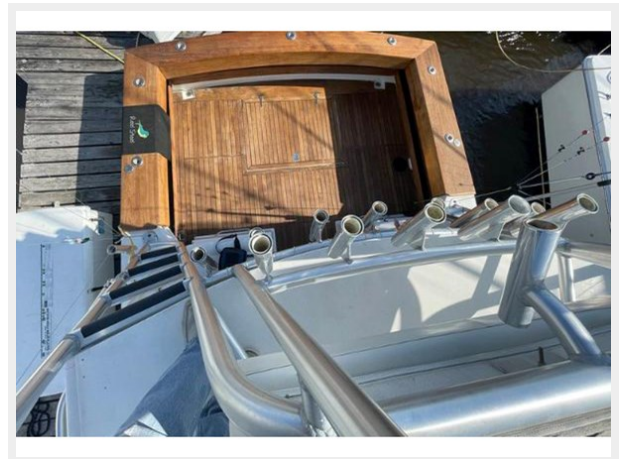
5



6



7



8



9



10



11



12



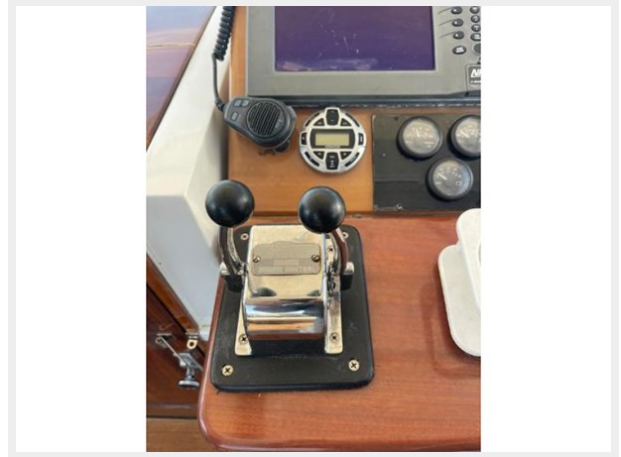
13



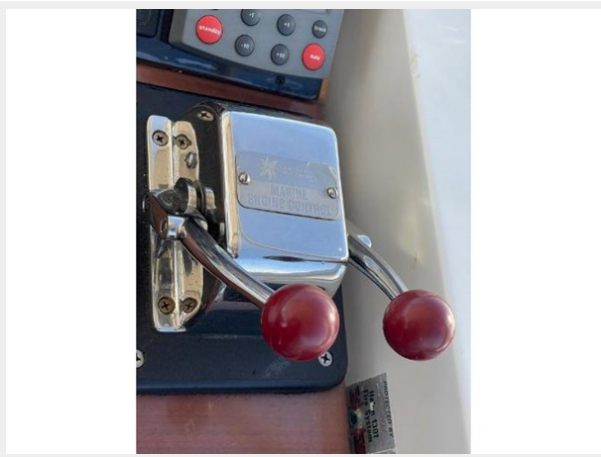
14



15



16



17



18



19



20



21



22



23



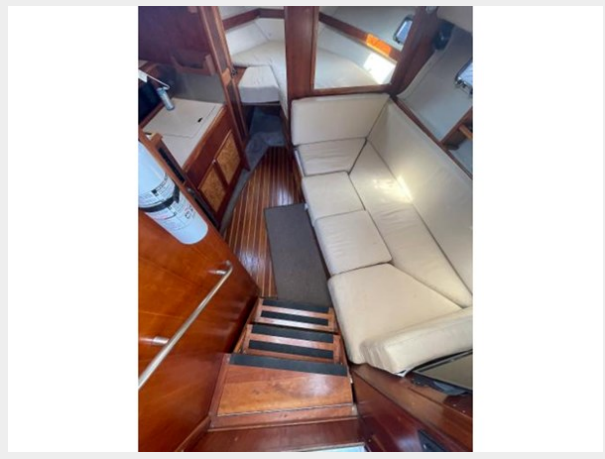
24



25



26



27



28



29



30



31



32



33



34



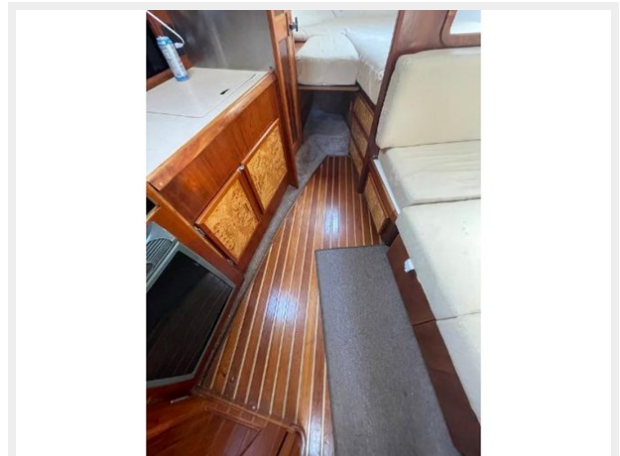
35



36



37



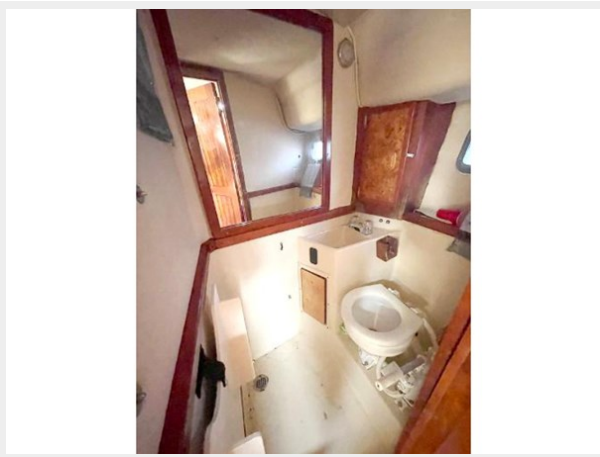
38



39



40



41



42



43



44



45



46



47



CONTACTS

Andrey Shestakov, leading yacht broker of the sales department of Shestakov Yacht Sales Inc. Shestakov Yacht Sales Inc., the official representative of the Miami/Fort Lauderdale FL headquarters.

Contact details

Email: andrey@shestakovyachtsales.com

Web: shestakovyachtsales.com/en/

Telephones

USA: +1(954)274-4435

Office hours

Monday – Saturday: **9:00 - 21:00** EDT

Sunday: **closed**

Address



Harbour Towne Marina, 850 NE 3rd St,
STE 213, Dania, FL 33004