

ASH — WALLY



Builder: WALLY

Year Built: 2005

Model: Motor Yacht

Price: PRICE ON APPLICATION

LOA: 73' 6" (22.38mm)

Beam: 19.02

Max Draft: 4' (1.2mm)

Cruise Speed: 32 Knots Kts. (37 MPH)

Max Speed: 40 Knots Kts. (46 MPH)

Our experienced yacht broker, Andrey Shestakov, will help you choose and buy a yacht that best suits your needs **ASH — WALLY** from **our catalogue**. Presently, at **Shestakov Yacht Sales Inc.**, we have a wide variety of yachts available on **our sale's list**. We also work in close contact with all the big **yacht manufacturers** from all over the world.

If you would like to buy a yacht **ASH — WALLY** or would like help answering any questions concerning purchasing, selling or chartering a yacht, please call **+1(954)274-4435**

TABLE OF CONTENTS

TABLE OF CONTENTS	2
SPECIFICATIONS	4
Overview	4
Basic Information	4
Dimensions	4
Speed, Capacities and Weight	4
Accommodations	5
Hull and Deck Information	5
Engine Information	5
PHOTOS	6
2	6
3	6
5	6
4	6
7	6
6	6
8	7
9	7
10	7
11	7
12	7
13	7
14	8
16	8
17	8
18	8
19	8
20	8

21	9
22	9
23	9
24	9
26	10
25	10
27	10
28	10
29	10
15	10
CONTACTS	11
Contact details	11
Telephones	11
Office hours	11
Address	11

SPECIFICATIONS

Overview

ASH is the best example of the famous Wally Power 70. This fast open yacht with futuristic design was refitted cosmetically and technically the last few years. The meticulous owner is keeping her out of water in a hangar during wintertime and has a full-time crew on board. The engines have been refitted to zero hour by MTU in 2021. The Wally ASH cruised around 100h since then. She offers a huge front deck to relax with two sun beds, a table (can be converted in a massive sun bed) and a Bimini with carbon poles. The cockpit is another nice place to relax with a big sun bed on top of tender garage (full of water toys). Her powerful engines and her Rolls-Royce Kamewa waterjet propulsion can bring you from St Tropez to Corsica in less than 3 hours! ASH is the only Wally Power 70 for sale in Europe and her VAT is paid. ASH is ready to cruise with her new owner next summer in Saint Tropez where her home berth is located.

Basic Information

Category: Motor Yacht

Model Year: 2006

Year Built: 2005

Dimensions

LOA: 73' 6" (22.38mm)

Beam: 19.02

Max Draft: 4' (1.2mm)

Speed, Capacities and Weight

Cruise Speed: 32 Knots Kts. (37 MPH) **Max Speed:** 40 Knots Kts. (46 MPH)

Water Capacity: 800 Gallons

Fuel Capacity: 924.6 Gal Gallons

Accommodations

Total Cabins: 2

Total Berths: 2

Sleeps: 4

Crew Cabin: 2

Crew Berths: 1

Hull and Deck Information

Hull Material: Advanced Composites

Interior Designer: WALLY - WETZELS
BROWN PARTNERS

Engine Information

Engines: 1

Manufacturer: MTU

PHOTOS

2



3



4



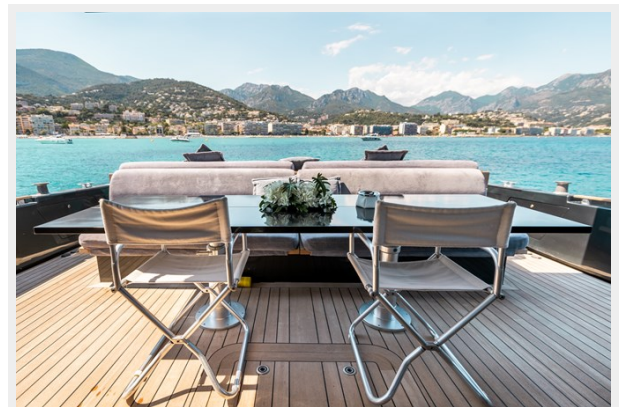
5



6



7



8



9



10



11



12



13



14



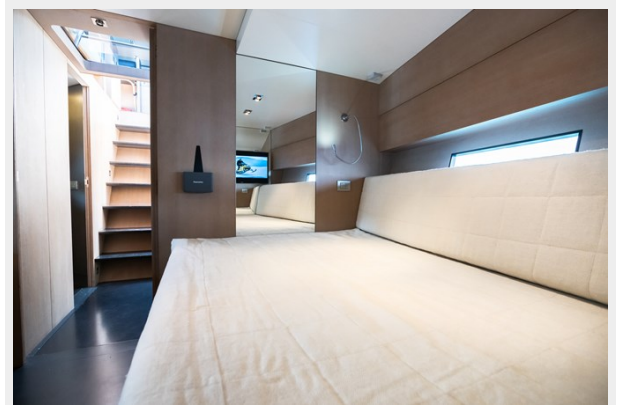
16



17



18



19



20



21



22



23



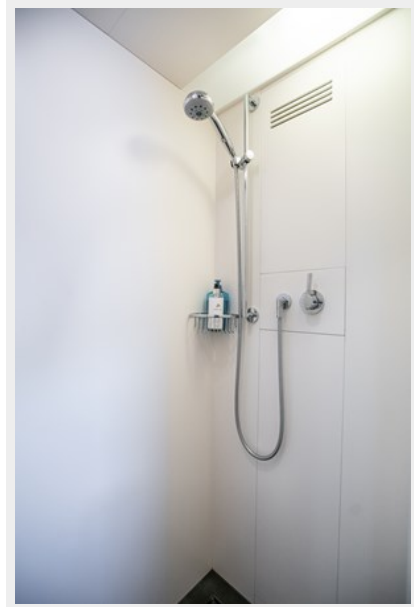
24



25



26



27



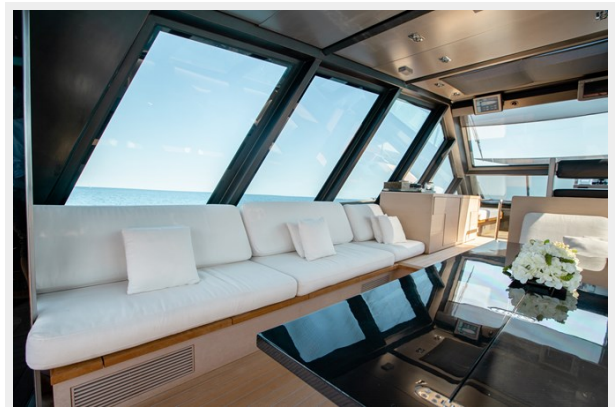
28



29



15



CONTACTS

Andrey Shestakov, leading yacht broker of the sales department of Shestakov Yacht Sales Inc. Shestakov Yacht Sales Inc., the official representative of the Miami/Fort Lauderdale FL headquarters.

Contact details

Email: **andrey@shestakovyachtsales.com**

Web: shestakovyachtsales.com/en/

Telephones

USA: **+1(954)274-4435**

Office hours

Monday – Saturday: **9:00 - 21:00** EDT

Sunday: **closed**

Address



Harbour Towne Marina, 850 NE 3rd St, STE 213, Dania, FL 33004