

## GREY GOOSE — NAUTOR'S SWAN



**Builder:** NAUTOR'S SWAN

**Year Built:** 2006

**Model:** Cruising/Racing Sailboat

**Price:** PRICE ON APPLICATION

**Location:** Spain

**LOA:** 81' 8" (24.89mm)

**Beam:** 19.25

**Min Draft:** 4' 3" (1.3mm)

**Max Draft:** 14' 1" (4.29mm)

Our experienced yacht broker, Andrey Shestakov, will help you choose and buy a yacht that best suits your needs **GREY GOOSE — NAUTOR'S SWAN** from our catalogue. Presently, at Shestakov Yacht Sales Inc., we have a wide variety of yachts available on our sale's list. We also work in close contact with all the big yacht manufacturers from all over the world.

If you would like to buy a yacht **GREY GOOSE — NAUTOR'S SWAN** or would like help answering any questions concerning purchasing, selling or chartering a yacht, please call **+1(954)274-4435**

# TABLE OF CONTENTS

TABLE OF CONTENTS	2
SPECIFICATIONS	3
Overview	3
Basic Information	4
Dimensions	4
Speed, Capacities and Weight	4
Accommodations	4
Hull and Deck Information	4
Engine Information	5
PHOTOS	6
CONTACTS	14
Contact details	14
Telephones	14
Office hours	14
Address	14

---

# SPECIFICATIONS

---

## Overview

---

This Nautor's Swan 82 FD "Grey Goose" is the perfect combination of performance cruising, easy and safe boat handling with a shorthanded crew and blue water sailing capability. While mostly being used as a fast cruiser, Grey Goose can be easily converted to an aggressive Maxi Cruiser Racer and perform in any race, inshore and offshore. As the current owner is very competitive, he started to improve Grey Goose soon after participating in his first Transatlantic and Swan Maxi regattas. German Frers, the designer of the Swan 82, was tasked to design a new keel, which brought down the center of gravity, improved acceleration, pointing angles and slot keeping dramatically, balancing the boat perfectly in the water. A new rudder was fitted, and the hull was faired with long boards to have the perfect hydrodynamics. The rod rigging was replaced by Future Fibres PBO, standing rigging, which has been replaced by EC6 standing rigging in 2012. In 2016 a new Hall Spars high modulus carbon fibre mast (same dimensions as her original mast) has been installed with four low profile spreaders, giving more strength and reducing weight by approx. another 350 kg. Increasing the righting moment significantly, the new mast has made a considerable improvement in upwind and overall performance. To improve safety and performance, the new mast was fitted with easy to operate halyard locks for all headsails and the Main. In September 2017 her mast was stepped down for the 5 year service of the EC6 rigging and fully serviced.

The sail wardrobe has been designed and developed in close cooperation between the North Lofts in Spain and the UK, taking advantage of the deep knowledge of the sailmakers sailing on board. Grey Goose is now a totally different boat, outperforming any other Swan 82 ever built. She demonstrates the real Swan DNA by accomplishing her missions in a perfect manner being comfortable, sea worthy and very fast. She has proven her outstanding performance in several racing events and in numerous family holidays cruises.

Grey Goose is undoubtedly in outstanding mint conditions. Although many upgrades were made to improve the performance, most of them enlarge the fun factor as well in cruising like less pitching, fast acceleration and direct steering.

At the end of the 2012 season, Grey Goose underwent a second extensive refit at Hinckley Yachts, Portsmouth, RI/USA. This included upgrading the standing rigging to Southern Spars EC6 continuous carbon rigging, painting the hull topsides and aft cockpit, upgrading to VSAT satellite communications, a new, fuel saving generator, as well as many other significant upgrades and improvements, including the interior, the audio- and entertainment and navigation systems. Grey Goose has been rigorously maintained by her owner to keep pace with the numerous technological advancements in luxury yacht construction since her launch. Outdated equipment has been replaced and only top of the line gear has been fitted. This gives her a modern, contemporary feel, comparable to the very latest generation of Swan yachts.

Grey Goose has always been maintained by a highly professional, experienced and dedicated

crew, insuring that she was always ready to take her whenever the owner wanted to sail. Her safety equipment has been updated this season, new life rafts, have been bought. There are several EPIRBS on board as well as Personal EPIRBS and PLB's for a full racing crew, as the owner never compromises on safety. The boat comes with a 40Ft Container with workshop and storage capacity, a matching 30ft Dariel Tender with 600HP Mercury outboard engines can be purchased separately.

### Basic Information

Category: Cruising/Racing Sailboat	Model Year: 2006
Year Built: 2006	Country: Spain

### Dimensions

LOA: 81' 8" (24.89mm)	LWL: 69' 9" (21.26mm)
Beam: 19.25	Min Draft: 4' 3" (1.3mm)
Max Draft: 14' 1" (4.29mm)	

### Speed, Capacities and Weight

Water Capacity: 1.2 Gallons	Fuel Capacity: 0.46 Gal Gallons
-----------------------------	---------------------------------

### Accommodations

Total Cabins: 4	Sleeps: 8
Total Heads: 5	

### Hull and Deck Information

Hull Material: Fiberglass	Hull Color: Grey
Exterior Designer: German Frers	

## Engine Information

---

**Engines:** 1

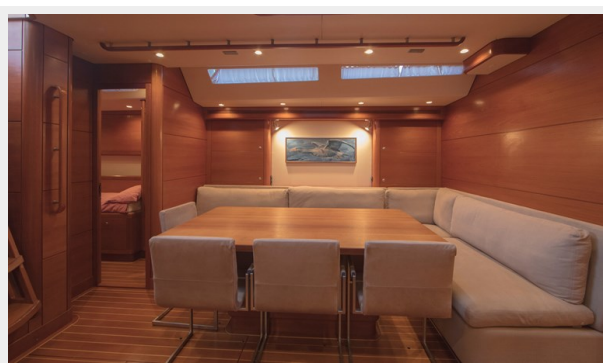
**Manufacturer:** Cummins

**Fuel Type:** Diesel

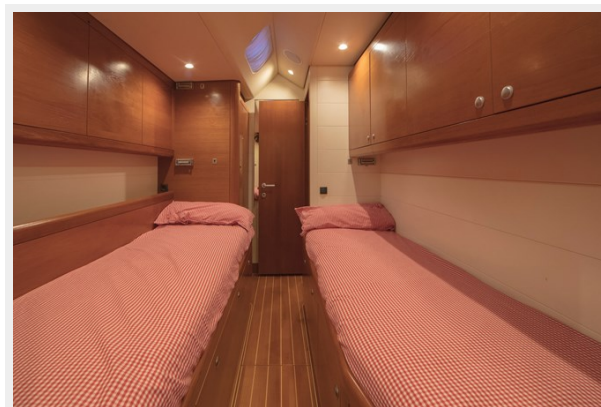
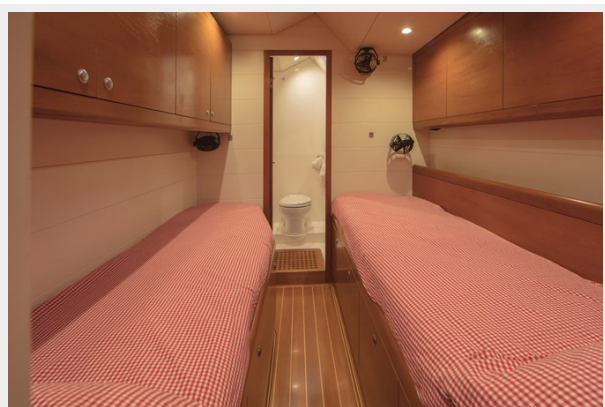
# PHOTOS

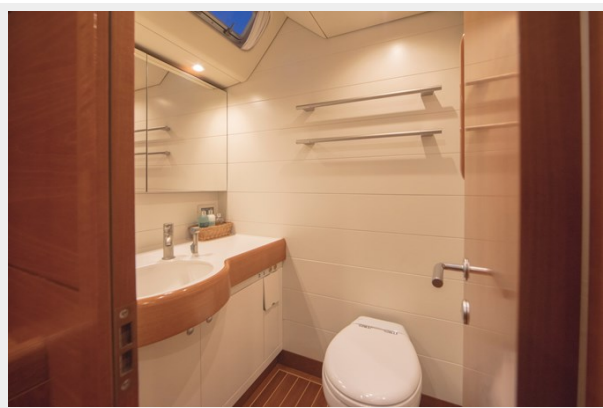


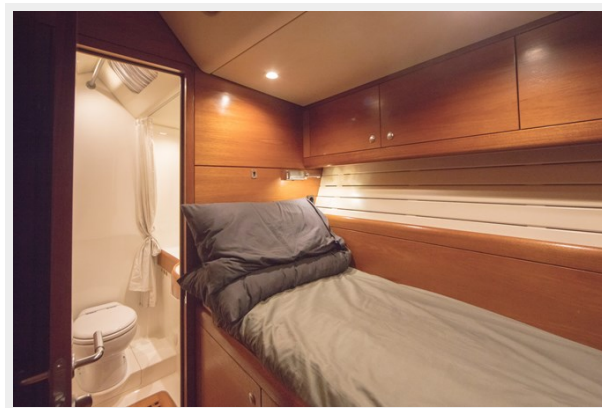


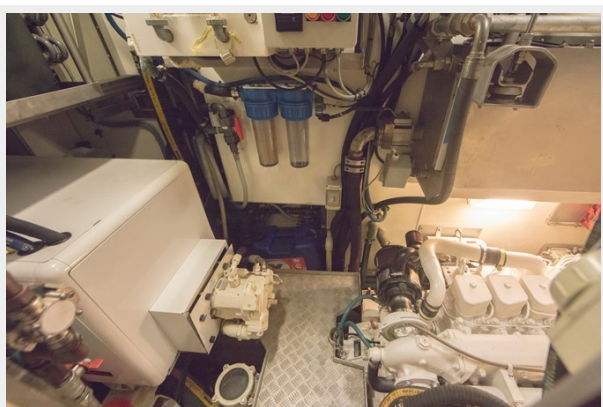












# CONTACTS

---

Andrey Shestakov, leading yacht broker of the sales department of Shestakov Yacht Sales Inc. Shestakov Yacht Sales Inc., the official representative of the Miami/Fort Lauderdale FL headquarters.

## Contact details

---

Email: **andrey@shestakovyachtsales.com**

Web: [shestakovyachtsales.com/en/](http://shestakovyachtsales.com/en/)

## Telephones

---

USA: **+1(954)274-4435**

## Office hours

---

Monday – Saturday: **9:00 - 21:00 EDT**

Sunday: **closed**

## Address

---



Harbour Towne Marina, 850 NE 3rd St,  
STE 213, Dania, FL 33004