

44 POWERCAT — OVERBLUE



Builder: OVERBLUE

Year Built: 2017

Model: Catamaran

Price: \$555,000 USD

Location: United States

LOA: 44' 2" (13.46mm)

Beam: 13.58

Max Draft: 4' (1.22mm)

Our experienced yacht broker, Andrey Shestakov, will help you choose and buy a yacht that best suits your needs 44 Powercat — OVERBLUE from our catalogue. Presently, at Shestakov Yacht Sales Inc., we have a wide variety of yachts available on our sale's list. We also work in close contact with all the big yacht manufacturers from all over the world.

If you would like to buy a yacht 44 Powercat — OVERBLUE or would like help answering any questions concerning purchasing, selling or chartering a yacht, please call +1(954)274-4435

TABLE OF CONTENTS

TABLE OF CONTENTS	2
SPECIFICATIONS	6
Basic Information	6
Dimensions	6
Accommodations	6
Hull and Deck Information	6
Engine Information	6
PHOTOS	7
44_overblue_powercat_profiles_17	7
44_overblue_powercat_profiles_11	7
44_overblue_powercat_profiles_9	7
44_overblue_powercat_profiles_4	7
44_overblue_powercat_profiles_5	7
44_overblue_powercat_profiles_7	7
44_overblue_powercat_profiles_8	8
44_overblue_powercat_profiles_10	8
44_overblue_powercat_profiles_12	8
44_overblue_powercat_profiles_13	8
44_overblue_powercat_profiles_14	8
44_overblue_powercat_profiles_15	8
44_overblue_powercat_profiles_16	9
44_overblue_powercat_profiles_1	9
44_overblue_powercat_cockpit_1	9
44_overblue_powercat_cockpit_2	9
44_overblue_powercat_cockpit_3	9
44_overblue_powercat_cockpit_4	9
44_overblue_powercat_cockpit_5	10
44_overblue_powercat_galley_1	10

44_overblue_powercat_galley_2	10
44_overblue_powercat_galley_3	10
44_overblue_powercat_galley_4	10
44_overblue_powercat_galley_5	10
44_overblue_powercat_galley_6	11
44_overblue_powercat_galley_7	11
44_overblue_powercat_galley_9	11
44_overblue_powercat_galley_8	11
44_overblue_powercat_galley_10	12
44_overblue_powercat_galley_11	12
44_overblue_powercat_forward_stateroom_1	12
44_overblue_powercat_forward_stateroom_2	12
44_overblue_powercat_forward_stateroom_3	13
44_overblue_powercat_forward_stateroom_4	13
44_overblue_powercat_forward_stateroom_6	13
44_overblue_powercat_forward_stateroom_5	13
44_overblue_powercat_forward_stateroom_7	13
44_overblue_powercat_forward_stateroom_8	13
44_overblue_powercat_forward_head_1	14
44_overblue_powercat_forward_head_2	14
44_overblue_powercat_forward_head_3	14
44_overblue_powercat_starboard_guest_stateroom_1	14
44_overblue_powercat_starboard_guest_stateroom_2	15
44_overblue_powercat_guest_head_1	15
44_overblue_powercat_guest_head_2	15
44_overblue_powercat_guest_head_3	15
44_overblue_powercat_port_guest_stateroom_2	16
44_overblue_powercat_port_guest_stateroom_1	16
44_overblue_powercat_port_guest_stateroom_3	16

_SAM0102	16
_SAM0105	16
_SAM0108	16
_SAM0114	17
_SAM0111	17
_SAM0117	17
_SAM0120	17
_SAM0123	18
_SAM0126	18
_SAM0129	18
_SAM0135	18
_SAM0138	19
_SAM0141	19
_SAM0144	19
_SAM0147	19
_SAM0150	19
_SAM0153	19
_SAM0159	20
44_overblue_powercat_engine_room_hatch_1	20
44_overblue_powercat_aerials_2	20
44_overblue_powercat_aerials_1	20
44_overblue_powercat_aerials_3	20
44_overblue_powercat_aerials_4	20
44_overblue_powercat_aerials_5	21
44_overblue_powercat_aerials_6	21
44_overblue_powercat_aerials_7	21
44_overblue_powercat_aerials_8	21
CONTACTS	22
Contact details	22

Telephones	22
Office hours	22
Address	22

SPECIFICATIONS

Basic Information

Category: Catamaran

Model Year: 2017

Year Built: 2017

Country: United States

Dimensions

LOA: 44' 2" (13.46mm)

Beam: 13.58

Max Draft: 4' (1.22mm)

Accommodations

Total Cabins: 3

Total Heads: 2

Hull and Deck Information

Hull Material: Fiberglass

Engine Information

Engines: 2

Manufacturer: Volvo

Engine Type: Inboard

Fuel Type: Diesel

PHOTOS

44_overblue_powercat_profiles_17



44_overblue_powercat_profiles_11



44_overblue_powercat_profiles_9



44_overblue_powercat_profiles_4



44_overblue_powercat_profiles_5



44_overblue_powercat_profiles_7



44_overblue_powercat_profiles_8



44_overblue_powercat_profiles_10



44_overblue_powercat_profiles_12



44_overblue_powercat_profiles_13



44_overblue_powercat_profiles_14



44_overblue_powercat_profiles_15



44_overblue_powercat_profiles_16



44_overblue_powercat_profiles_1



44_overblue_powercat_cockpit_1



44_overblue_powercat_cockpit_2



44_overblue_powercat_cockpit_3



44_overblue_powercat_cockpit_4



44_overblue_powercat_cockpit_5



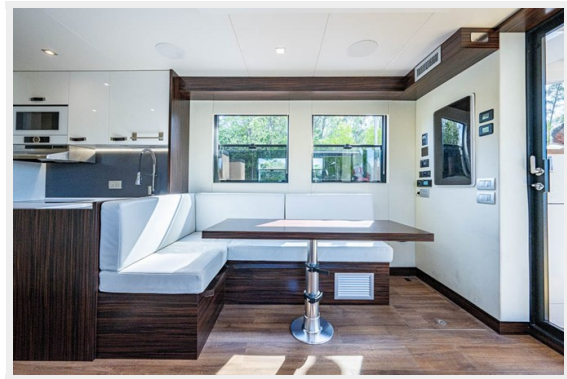
44_overblue_powercat_galley_1



44_overblue_powercat_galley_2



44_overblue_powercat_galley_3



44_overblue_powercat_galley_4



44_overblue_powercat_galley_5



44_overblue_powercat_galley_6



44_overblue_powercat_galley_7



44_overblue_powercat_galley_9



44_overblue_powercat_galley_8



44_overblue_powercat_galley_10



44_overblue_powercat_galley_11



44_overblue_powercat_forward_stateroom_1



44_overblue_powercat_forward_stateroom_2



44_overblue_powercat_forward_stateroom_3



44_overblue_powercat_forward_stateroom_4



44_overblue_powercat_forward_stateroom_6

44_overblue_powercat_forward_stateroom_5



44_overblue_powercat_forward_stateroom_7

44_overblue_powercat_forward_stateroom_8



44_overblue_powercat_forward_head_1



44_overblue_powercat_forward_head_2



44_overblue_powercat_forward_head_3 44_overblue_powercat_starboard_guest_stateroom_1



44_overblue_powercat_starboard_guest_stateroom_2 44_overblue_powercat_guest_head_1



44_overblue_powercat_guest_head_2



44_overblue_powercat_guest_head_3



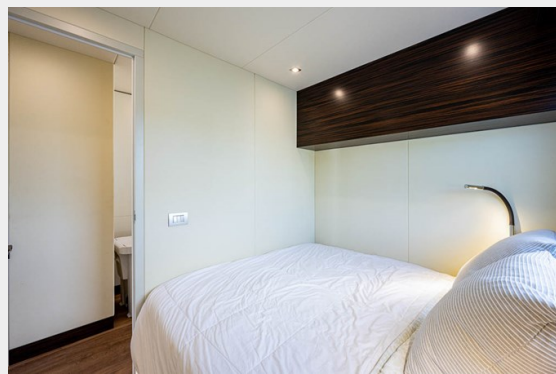
44_overblue_powercat_port_guest_stateroom_2

44_overblue_powercat_port_guest_stateroom_1



44_overblue_powercat_port_guest_stateroom_3

_SAM0102



_SAM0105

_SAM0108



_SAM0111



_SAM0114



_SAM0117



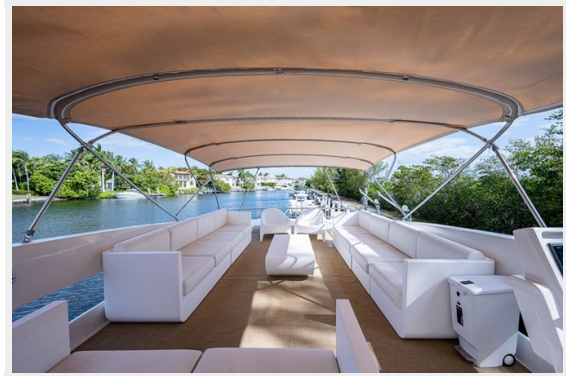
_SAM0120



_SAM0123



_SAM0126



_SAM0129



_SAM0135



_SAM0138



_SAM0141



_SAM0144



_SAM0147



_SAM0150



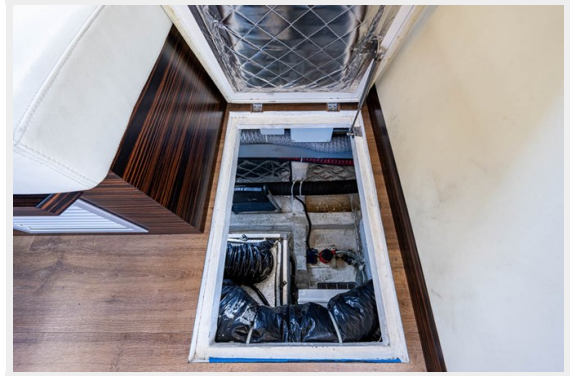
_SAM0153



_SAM0159



44_overblue_powercat_engine_room_hatch_1



44_overblue_powercat_aerials_2



44_overblue_powercat_aerials_1



44_overblue_powercat_aerials_3



44_overblue_powercat_aerials_4



44_overblue_powercat_aerials_5



44_overblue_powercat_aerials_6



44_overblue_powercat_aerials_7



44_overblue_powercat_aerials_8



CONTACTS

Andrey Shestakov, leading yacht broker of the sales department of Shestakov Yacht Sales Inc.
Shestakov Yacht Sales Inc., the official representative of the Miami/Fort Lauderdale FL headquarters.

Contact details

Email: **andrey@shestakovyachtsales.com**

Web: shestakovyachtsales.com/en/

Telephones

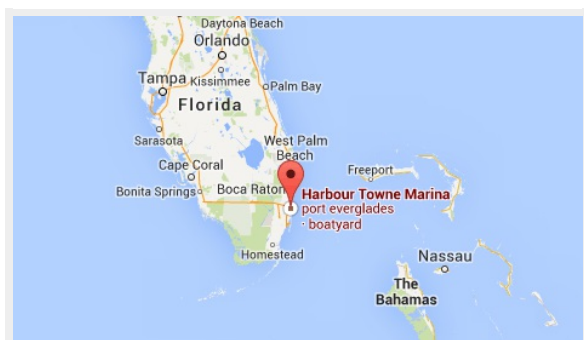
USA: +1(954)274-4435

Office hours

Monday – Saturday: **9:00 - 21:00 EDT**

Sunday: **closed**

Address



Harbour Towne Marina, 850 NE 3rd St,
STE 213, Dania, FL 33004