

ATALANTA J — FEADSHIP



Builder: FEADSHIP

Year Built: 1958

Model: Classic

Price: PRICE ON APPLICATION

Location: France

LOA: 83' 6" (25.43mm)

Beam: 16.86

Min Draft: 5' 11" (1.8mm)

Max Draft: 5' 11" (1.8mm)

Cruise Speed: 9 Knots Kts. (10 MPH)

Max Speed: 12 Knots Kts. (14 MPH)

Our experienced yacht broker, Andrey Shestakov, will help you choose and buy a yacht that best suits your needs **ATALANTA J — FEADSHIP** from our catalogue. Presently, at Shestakov Yacht Sales Inc., we have a wide variety of yachts available on our sale's list. We also work in close contact with all the big yacht manufacturers from all over the world.

If you would like to buy a yacht **ATALANTA J — FEADSHIP** or would like help answering any questions concerning purchasing, selling or chartering a yacht, please call **+1(954)274-4435**

TABLE OF CONTENTS

TABLE OF CONTENTS	2
SPECIFICATIONS	4
Overview	4
Basic Information	4
Dimensions	4
Speed, Capacities and Weight	4
Accommodations	4
Hull and Deck Information	5
Engine Information	5
PHOTOS	6
large_2427553	6
large_2427555	6
large_2427556	6
large_2427557	6
large_2427558	6
large_2427560	6
large_2427559	7
feadship-custom-451830_30e	7
large_2427562	7
large_2427563	7
feadship-custom-451830_28fe	7
large_2427551	7
large_2427548	8
atalanta_03	8
dsc_0970 - version 2	8
atalanta_01	8
dsc_0978 - version 2	8
large_2427549	8

large_2427550	9
large_2427552	9
CONTACTS	10
Contact details	10
Telephones	10
Office hours	10
Address	10

SPECIFICATIONS

Overview

- *Rare chance to purchase an iconic wooden Feadship*
- *Four cabin and double saloon layout*
- *Several options on deck with numerous dining and lounging areas*
- *Priced to sell, taking the work needed into account*
- *An ideal Mediterranean family yacht*
- *Has crossed the Atlantic ocean several times*

Basic Information

Category: Classic

Sub Category: Classic

Model Year: 1958

Year Built: 1958

Country: France

Dimensions

LOA: 83' 6" (25.43mm)

Beam: 16.86

Min Draft: 5' 11" (1.8mm)

Max Draft: 5' 11" (1.8mm)

Speed, Capacities and Weight

Cruise Speed: 9 Knots Kts. (10 MPH)

Cruise Speed Range: 2700

Max Speed: 12 Knots Kts. (14 MPH)

Gross Tonnage: 51.82 Pounds

Water Capacity: 3000 Gallons

Fuel Capacity: 1585.03 Gal Gallons

Accommodations

Total Cabins: 4

Hull and Deck Information

Hull Material: Other

Deck Material: Teak

Hull Designer: De Voogt / Feadship de Vries
Aalsmeer

Exterior Designer: De Voogt

Interior Designer: Felix Buytendijk

Engine Information

Engines: 2

Manufacturer: Iveco

PHOTOS

large_2427553



large_2427555



large_2427556



large_2427557



large_2427558



large_2427560



large_2427559



feadship-custom-451830_30e



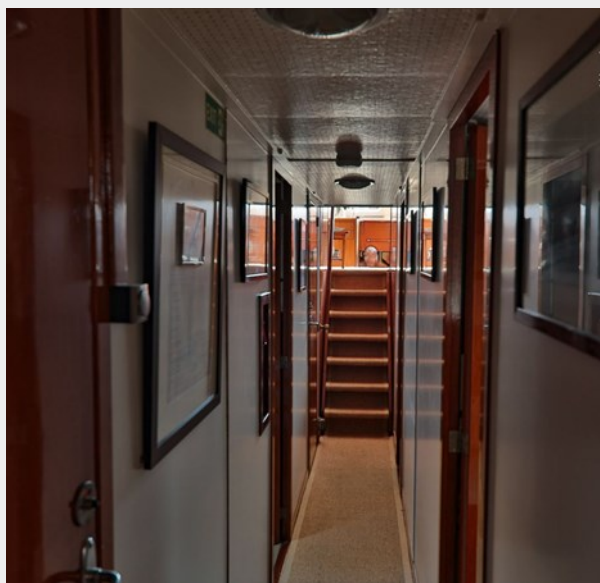
large_2427562



large_2427563



feadship-custom-451830_28fe



large_2427551



atalanta_03



large_2427548



atalanta_01



dsc_0970 - version 2



dsc_0978 - version 2



large_2427549



large_2427550



large_2427552



CONTACTS

Andrey Shestakov, leading yacht broker of the sales department of Shestakov Yacht Sales Inc. Shestakov Yacht Sales Inc., the official representative of the Miami/Fort Lauderdale FL headquarters.

Contact details

Email: andrey@shestakovyachtsales.com

Web: shestakovyachtsales.com/en/

Telephones

USA: +1(954)274-4435

Office hours

Monday – Saturday: **9:00 - 21:00** EDT

Sunday: **closed**

Address



Harbour Towne Marina, 850 NE 3rd St,
STE 213, Dania, FL 33004