

## UPON REQUEST — PRINCESS YACHTS



**Builder:** PRINCESS YACHTS

**Year Built:** 2020

**Model:** Motor Yacht

**Price:** €7,900,000 EUR

**Location:** Greece

**LOA:** 99' 11" (30.45m)

**Beam:** 23.16

**Max Draft:** 6' 10" (2.06m)

**Cruise Speed:** 16 Knots Kts. (18 MPH)

**Max Speed:** 26 Knots Kts. (30 MPH)

Our experienced yacht broker, Andrey Shestakov, will help you choose and buy a yacht that best suits your needs upon request — PRINCESS YACHTS from our catalogue. Presently, at Shestakov Yacht Sales Inc., we have a wide variety of yachts available on our sale's list. We also work in close contact with all the big yacht manufacturers from all over the world.

If you would like to buy a yacht upon request — PRINCESS YACHTS or would like help answering any questions concerning purchasing, selling or chartering a yacht, please call **+1(954)274-4435**

# TABLE OF CONTENTS

---

TABLE OF CONTENTS	2
SPECIFICATIONS	4
Overview	4
Basic Information	5
Dimensions	5
Speed, Capacities and Weight	5
Accommodations	5
Hull and Deck Information	5
Engine Information	6
PHOTOS	7
3-IHe5.	7
6-H5Bl.	7
7-UME4.	7
8-QMrx.	7
10-zxsw.	7
11-Awzv.	7
12-Vwkp.	8
13-6__C.	8
14-vTWb.	8
15-zJOB.	8
16-a1FE.	8
17-CR4t.	8
18-jMuk.	9
19-8hcL.	9
21-M8gf.	9
22-aO06.	9
23-x2g_.	9
24-0vtR.	9

---

25-6x7Z.	10
26-ivLN.	10
28-HqpV.	10
29-tq3g.	10
30-Qgl6.	10
31-dgzs.	10
33-G5Ys.	11
34-A1pl.	11
35-tyBz.	11
36-9KZM.	11
37-Tvn0.	11
38-gZHS.	11
39-v4kj.	12
40-OSb1.	12
41-6gQt.	12
44-ipGJ.	12
43-14tR.	12
<b>CONTACTS</b>	<b>13</b>
Contact details	13
Telephones	13
Office hours	13
Address	13

---

# SPECIFICATIONS

---

## Overview

---

The famous 30M RPH **M/Y AFON** was handed over to her first and only Owner in 2020. The yacht's exterior was designed by Olesinski Design, the interior design was created by Princess Design Studio. The garage can accommodate a 4.5 meter tender or jet ski with water toys.

The yacht was operated exclusively by the Owner and his family, having actually spent only one season on the water under the control of an experienced crew. Although the 2021 season has not been used, the ship is in excellent technical condition and requires only maintenance before going to sea.

Princess 30M is one of the most spacious yachts in the 30m segment. Particularly striking is the internal volume of the saloon which due to its size and natural light gives the impression of a much bigger vessel. In addition to the spaciousness of interiors AFON impresses by its cozy and welcoming atmosphere created by warm combination of carpets and lacquered oak accessorised with decorative elements such as an illuminated marble panel in the dining area, a lighting package and a perfectly matching set of decorative cushions.

The Owner's main deck suite includes a breakfast area, bathroom with walk-in shower and walk-in closet. The cabin perfectly transmits natural light through the side panoramic and ceiling windows. Guests are accommodated in two VIP cabins and two guest cabins, one of which can be transformed into a double cabin.

A long list of installed accessories such as a jacuzzi on the flybridge, a hard top with an openable central top, fin stabilisers and a remote control for the engines will make your stay on the yacht even more comfortable.

**M/Y AFON** is available for viewings at any time with prior notice.

---

## Basic Information

---

**Category:** Motor Yacht

**Model Year:** 2020

**Year Built:** 2020

**Country:** Greece

---

## Dimensions

---

**LOA:** 99' 11" (30.45mm)

**Beam:** 23.16

**Max Draft:** 6' 10" (2.06mm)

---

## Speed, Capacities and Weight

---

**Cruise Speed:** 16 Knots Kts. (18 MPH)

**Max Speed:** 26 Knots Kts. (30 MPH)

**Gross Tonnage:** 162 Pounds

**Water Capacity:** 1614 Gallons

**Fuel Capacity:** 3230.3 Gal Gallons

---

## Accommodations

---

**Total Cabins:** 5

---

## Hull and Deck Information

---

**Hull Material:** Fiberglass

**Deck Material:** Fiberglass

**Exterior Designer:** Bernard Olesinski

**Interior Designer:** Princess Design Studio

---

## Engine Information

---

**Engines:** 2

**Manufacturer:** MTU

**Engine Type:** Inboard

**Fuel Type:** Diesel

# PHOTOS

**3-IHe5.**



**6-H5BI.**



**7-UME4.**



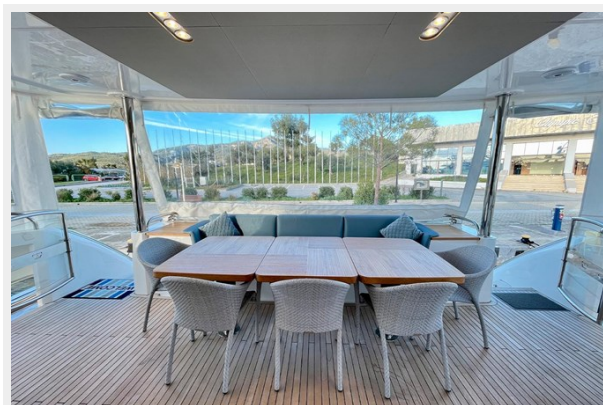
**8-QMrx.**



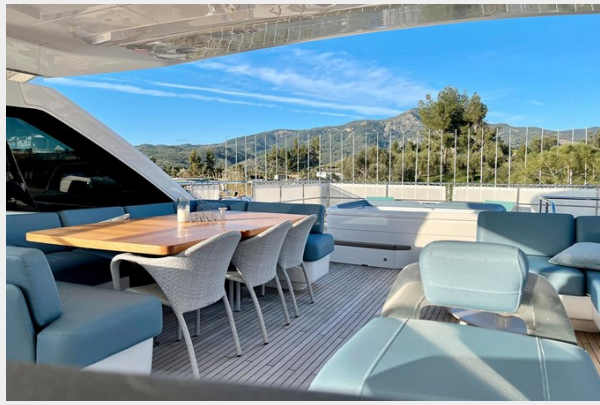
**10-zxsw.**



**11-Awzv.**



**12-Vwkp.**



**13-6\_C.**



**14-vTWb.**



**15-zJOB.**



**16-a1FE.**



**17-CR4t.**





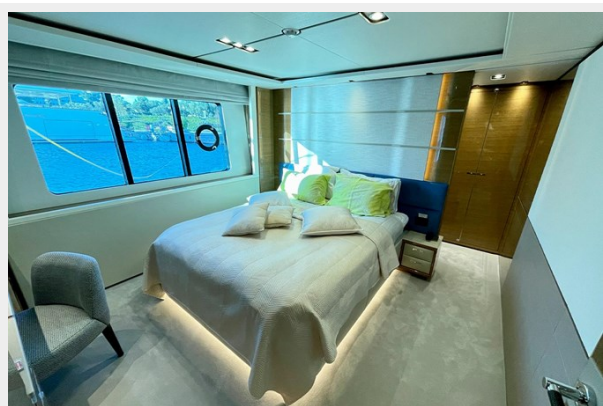
18-jMuk.



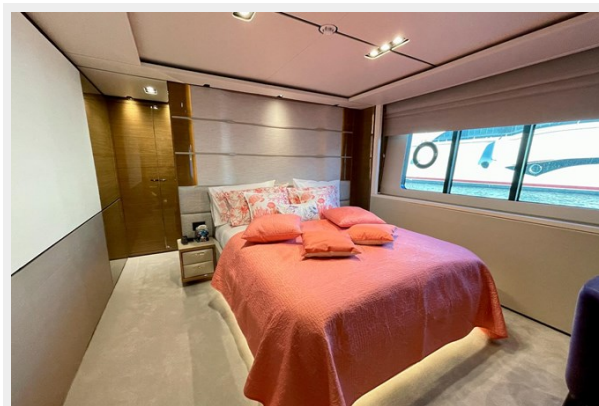
19-8hcL.



21-M8gf.



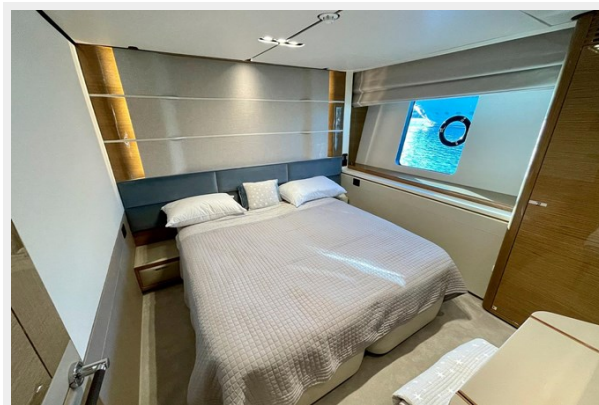
22-a006.



23-x2g\_.



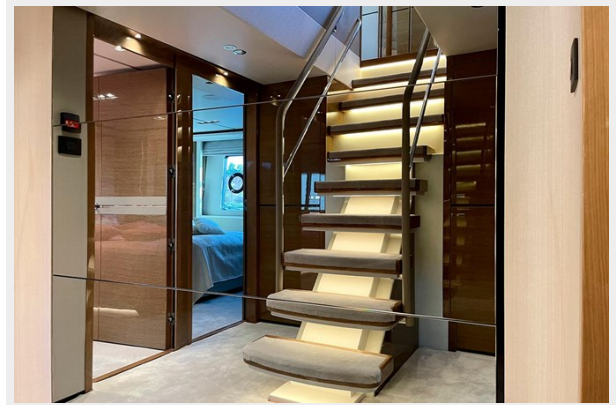
24-0vtR.



**25-6x7Z.**



**26-ivLN.**



**28-HqpV.**



**29-tq3g.**



**30-Qgl6.**



**31-dgzs.**



**33-G5Ys.**



**34-A1pl.**



**35-tyBz.**



**36-9KZM.**



**37-Tvn0.**



**38-gZHS.**



39-v4kj.



40-OSb1.



41-6gQt.



44-ipGJ.



43-14tR.



---

# CONTACTS

---

Andrey Shestakov, leading yacht broker of the sales department of Shestakov Yacht Sales Inc. Shestakov Yacht Sales Inc., the official representative of the Miami/Fort Lauderdale FL headquarters.

---

## Contact details

---

Email: [andrey@shestakovyachtsales.com](mailto:andrey@shestakovyachtsales.com)

Web: [shestakovyachtsales.com/en/](http://shestakovyachtsales.com/en/)

---

## Telephones

---

USA: +1(954)274-4435

---

## Office hours

---

Monday – Saturday: **9:00 - 21:00** EDT

Sunday: **closed**

---

## Address

---



Harbour Towne Marina, 850 NE 3rd St,  
STE 213, Dania, FL 33004