

MARY JO — ALBIN



Builder: ALBIN

Year Built: 1984

Model: Trawler Yacht

Price: PRICE ON APPLICATION

Location: United States

LOA: 27' (8.23mm)

Beam: 9.75

Min Draft: 2' 6" (0.76mm)

Max Draft: 2' 6" (0.76mm)

Cruise Speed: 6 Knots Kts. (7 MPH)

Max Speed: 8 Knots Kts. (9 MPH)

Our experienced yacht broker, Andrey Shestakov, will help you choose and buy a yacht that best suits your needs **Mary Jo — ALBIN** from our catalogue. Presently, at Shestakov Yacht Sales Inc., we have a wide variety of yachts available on our sale's list. We also work in close contact with all the big yacht manufacturers from all over the world.

If you would like to buy a yacht **Mary Jo — ALBIN** or would like help answering any questions concerning purchasing, selling or chartering a yacht, please call **+1(954)274-4435**

TABLE OF CONTENTS

TABLE OF CONTENTS	2
SPECIFICATIONS	4
Overview	4
Basic Information	4
Dimensions	4
Speed, Capacities and Weight	4
Accommodations	5
Hull and Deck Information	5
Engine Information	5
PHOTOS	6
0_2787796_27_albin_port_forward_profile	6
1_2787796_27_albin_port_aft_profile	6
2_2787796_27_albin_starboard_aft_profile	6
3_2787796_27_albin_anchor	6
4_2787796_27_albin_foredeck	6
5_2787796_27_albin_cockpit1	6
6_2787796_27_albin_cockpit2	7
7_2787796_27_albin_cockpit3	7
8_2787796_27_albin_cockpit_port	7
9_2787796_27_albin_cockpit_starboard	7
10_2787796_27_albin_tender1	7
11_2787796_27_albin_tender2	7
12_2787796_27_albin_tender_outboard	8
13_2787796_27_albin_salon_forward	8
14_2787796_27_albin_salon_aft	8
15_2787796_27_albin_salon_port	8
16_2787796_27_albin_salon_starboard	8
17_2787796_27_albin_salon_port_seating	8

18_2787796_27_albin_salon_starboard_seating	9
19_2787796_27_albin_helm1	9
20_2787796_27_albin_helm2	9
21_2787796_27_albin_lower_deck	9
22_2787796_27_albin_lower_deck_starboard	9
23_2787796_27_albin_galley1	9
25_2787796_27_albin_head	10
24_2787796_27_albin_galley2	10
26_2787796_27_albin_engine_room	10
27_2787796_27_albin_main_engine	10
28_2787796_27_albin_racor_fuel_filter	10
29_2787796_27_albin_electrical_panel1	10
30_2787796_27_albin_electrical_panel2	11
31_2787796_27_albin_inverter	11
32_2787796_27_albin_battery_charger	11
33_2787796_27_albin_solar_charger_controller	11
CONTACTS	12
Contact details	12
Telephones	12
Office hours	12
Address	12

SPECIFICATIONS

Overview

Mary Jo is a customized 27' Albin FC in good condition. The aft stateroom was removed and the boat was converted into a sedan style layout. she offers a single Lehman Peugeot 64 HP main engine, Xantrex 2000 watt inverter, 200 amp solar panels and a 2018 Highfield 9'6" aluminum hull RIB tender with a similar vintage Tohatsu 9.9 HP 4-stroker outboard. There have numerous upgrades and updates, and her sellers recently detailed her in preparing her for sale. The sellers are traveling in Europe this Summer, so they don't want Mary Jo to sit unattended during their absence, thus she is now offered for sale. Her height is only 14', so she is capable of cruising all the Great Loop route options.

Her previous owner was a award winning sculptor, licensed boat captain and sailing instructor who had a passion for building and rebuilding wooden boats. His customization of this boat was followed by many people on the Albin Owners Forum and inspired several to complete similar customization of their 27 FC models. Mary Jo has also been featured in an article in Passage Maker Magazine and various online cruising/boating groups.

Basic Information

Category: Trawler Yacht

Model Year: 1984

Year Built: 1984

Country: United States

Dimensions

LOA: 27' (8.23mm)

Beam: 9.75

Min Draft: 2' 6" (0.76mm)

Max Draft: 2' 6" (0.76mm)

Speed, Capacities and Weight

Cruise Speed: 6 Knots Kts. (7 MPH)

Max Speed: 8 Knots Kts. (9 MPH)

Water Capacity: 40 Gallons

Holding Tank: 20 Gal Gallons

Fuel Capacity: 68 Gal Gallons

Accommodations

Total Cabins: 1

Total Heads: 1

Hull and Deck Information

Hull Material: Fiberglass

Engine Information

Engines: 1

Manufacturer: Lehman

Engine Type: Inboard

Fuel Type: Diesel

PHOTOS

0_2787796_27_albin_port_forward_profile



1_2787796_27_albin_port_aft_profile



2_2787796_27_albin_starboard_aft_profile



3_2787796_27_albin_anchor



4_2787796_27_albin_foredeck



5_2787796_27_albin_cockpit1



6_2787796_27_albin_cockpit2



7_2787796_27_albin_cockpit3



8_2787796_27_albin_cockpit_port



9_2787796_27_albin_cockpit_starboard



10_2787796_27_albin_tender1



11_2787796_27_albin_tender2



12_2787796_27_albin_tender_outboard



13_2787796_27_albin_salon_forward



14_2787796_27_albin_salon_aft



15_2787796_27_albin_salon_port



16_2787796_27_albin_salon_starboard



17_2787796_27_albin_salon_port_seating



18_2787796_27_albin_salon_starboard_seating



19_2787796_27_albin_helm1



20_2787796_27_albin_helm2



21_2787796_27_albin_lower_deck



22_2787796_27_albin_lower_deck_starboard



23_2787796_27_albin_galley1



24_2787796_27_albin_galley2



25_2787796_27_albin_head



26_2787796_27_albin_engine_room



27_2787796_27_albin_main_engine



28_2787796_27_albin_racor_fuel_filter



29_2787796_27_albin_electrical_panel1



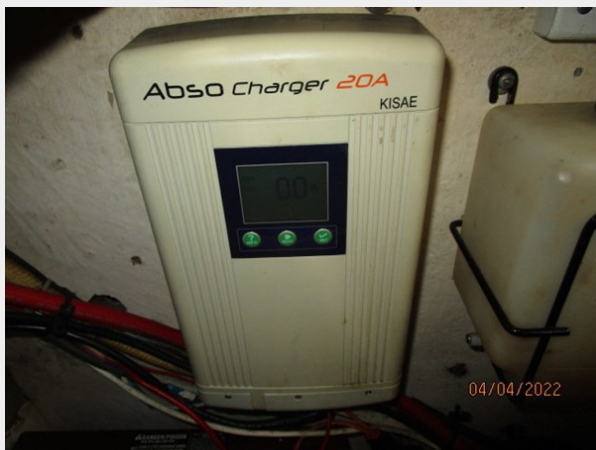
30_2787796_27_albin_electrical_panel2



31_2787796_27_albin_inverter



32_2787796_27_albin_battery_charger 33_2787796_27_albin_solar_charger_controller



CONTACTS

Andrey Shestakov, leading yacht broker of the sales department of Shestakov Yacht Sales Inc. Shestakov Yacht Sales Inc., the official representative of the Miami/Fort Lauderdale FL headquarters.

Contact details

Email: andrey@shestakovyachtsales.com

Web: shestakovyachtsales.com/en/

Telephones

USA: +1(954)274-4435

Office hours

Monday – Saturday: **9:00 - 21:00** EDT

Sunday: **closed**

Address



Harbour Towne Marina, 850 NE 3rd St,
STE 213, Dania, FL 33004