

GREEN EYED GIRL — GAMEFISHERMAN



Builder: GAMEFISHERMAN

Year Built: 1992

Model: Sport Fisherman

Price: PRICE ON APPLICATION

Location: United States

LOA: 34' (10.36mm)

Beam: 11.16

Max Draft: 2' 6" (0.76mm)

Cruise Speed: 26 Knots Kts. (30 MPH)

Max Speed: 34 Knots Kts. (39 MPH)

Our experienced yacht broker, Andrey Shestakov, will help you choose and buy a yacht that best suits your needs **GREEN EYED GIRL — GAMEFISHERMAN** from **our catalogue**. Presently, at **Shestakov Yacht Sales Inc.**, we have a wide variety of yachts available on **our sale's list**. We also work in close contact with all the big **yacht manufacturers** from all over the world.

If you would like to buy a yacht **GREEN EYED GIRL — GAMEFISHERMAN** or would like help answering any questions concerning purchasing, selling or chartering a yacht, please call **+1(954)274-4435**

TABLE OF CONTENTS

TABLE OF CONTENTS	2
SPECIFICATIONS	4
Basic Information	4
Dimensions	4
Speed, Capacities and Weight	4
Accommodations	4
Hull and Deck Information	4
Engine Information	4
PHOTOS	5
2020 High Seas Fabrication Tower	6
Release Fighting Chair with rocket launcher backrest	7
Teak cockpit deck	7
Tower helm with networked Garmin MFD	7
Captain's view of cockpit from tower	7
Twin Garmin MFDs	8
Updated Electronics flush mounted in overhead box	8
Classic teak helm pod with fresh gauge package	9
Varnished Mahogany galley counter	9
Cabin bunks can be converted to settee	9
Refrigerated Box in galley	9
New CUMMINS mechanical motors 2016	10
Head forward	10
Port Cummins 370hp	10
Strengthened engine mounting beds	10
Odyssey batteries and all heavy wiring updated	10
Detailed engine room	10
Phasor generator	11
Tuna Tubes or Transom Livewell	11

CONTACTS	13
Contact details	13
Telephones	13
Office hours	13
Address	13

SPECIFICATIONS

Basic Information

Category: Sport Fisherman

Model Year: 1993

Year Built: 1992

Country: United States

Dimensions

LOA: 34' (10.36mm)

Beam: 11.16

Max Draft: 2' 6" (0.76mm)

Speed, Capacities and Weight

Cruise Speed: 26 Knots Kts. (30 MPH) **Max Speed:** 34 Knots Kts. (39 MPH)

Water Capacity: 30 Gallons

Fuel Capacity: 225 Gal Gallons

Accommodations

Total Cabins: 1

Hull and Deck Information

Hull Material: Fiberglass

Deck Material: Fiberglass

Hull Configuration: Modified V-Hull

Engine Information

Engines: 2

Manufacturer: Cummins

Engine Type: Inboard

Fuel Type: Diesel

PHOTOS





2020 High Seas Fabrication Tower



Teak cockpit deck



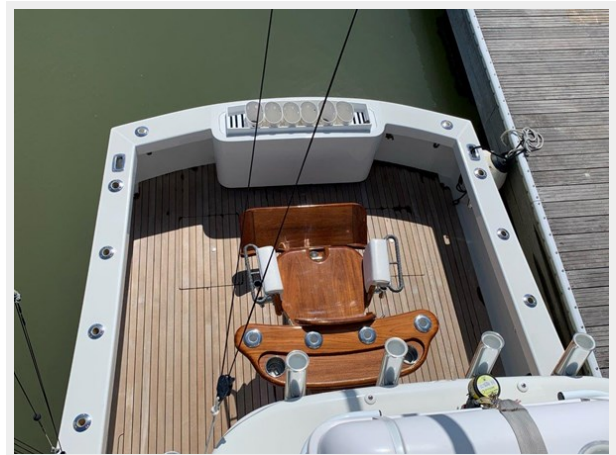
Release Fighting Chair with rocket launcher backrest

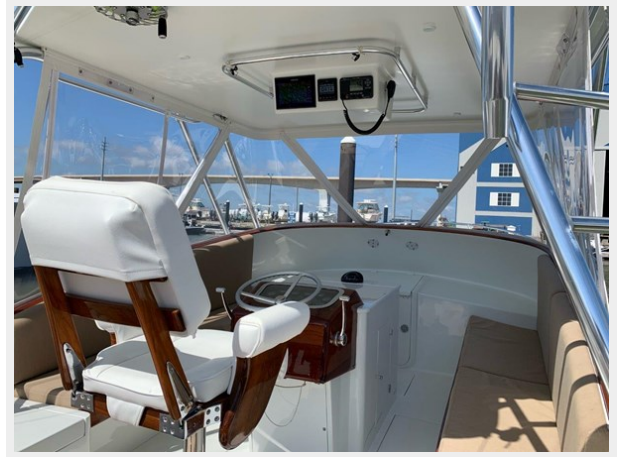


Tower helm with networked Garmin MFD



Captain's view of cockpit from tower





Twin Garmin MFDs

Updated Electronics flush mounted in overhead box



Classic teak helm pod with fresh gauge package



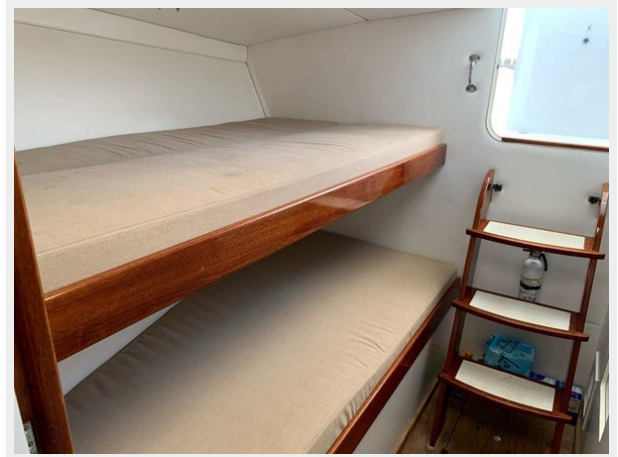
Varnished Mahogany galley counter



Refrigerated Box in galley



Cabin bunks can be converted to settee



Head forward



**New CUMMINS mechanical motors
2016**



Port Cummins 370hp



Strengthened engine mounting beds



Detailed engine room



**Odyssey batteries and all heavy
wiring updated**



Phasor generator



Tuna Tubes or Transom Livewell





CONTACTS

Andrey Shestakov, leading yacht broker of the sales department of Shestakov Yacht Sales Inc. Shestakov Yacht Sales Inc., the official representative of the Miami/Fort Lauderdale FL headquarters.

Contact details

Email: **andrey@shestakovyachtsales.com**

Web: shestakovyachtsales.com/en/

Telephones

USA: **+1(954)274-4435**

Office hours

Monday – Saturday: **9:00 - 21:00** EDT

Sunday: **closed**

Address



Harbour Towne Marina, 850 NE 3rd St, STE 213, Dania, FL 33004