

2007 REGAL 2700BR NLSR — REGAL



Builder: REGAL

Year Built: 2006

Model: Boats

Price: PRICE ON APPLICATION

Location: United States

LOA: 28' 6" (8.69mm)

Beam: 8.5

Max Draft: 3' (0.91mm)

Our experienced yacht broker, Andrey Shestakov, will help you choose and buy a yacht that best suits your needs 2007 Regal 2700BR NLSR — REGAL from our catalogue. Presently, at Shestakov Yacht Sales Inc., we have a wide variety of yachts available on our sale's list. We also work in close contact with all the big yacht manufacturers from all over the world.

If you would like to buy a yacht 2007 Regal 2700BR NLSR — REGAL or would like help answering any questions concerning purchasing, selling or chartering a yacht, please call +1(954)274-4435

TABLE OF CONTENTS

TABLE OF CONTENTS	2
SPECIFICATIONS	6
Overview	6
Basic Information	6
Dimensions	6
Speed, Capacities and Weight	6
Accommodations	6
Hull and Deck Information	7
Engine Information	7
PHOTOS	8
004	8
006	8
007	8
008	8
009	8
010	8
011	9
012	9
013	9
014	9
015	9
016	9
017	10
018	10
019	10
020	10
021	10
022	10

023	11
024	11
025	11
026	11
027	11
028	11
029	12
030	12
031	12
032	12
033	12
034	12
035	13
036	13
037	13
038	13
039	13
040	13
041	14
042	14
043	14
044	14
046	14
045	14
047	15
048	15
049	15
050	15
051	15

052	15
053	16
054	16
055	16
056	16
057	16
058	16
059	17
060	17
061	17
062	17
063	17
064	17
065	18
066	18
068	18
067	18
069	19
070	19
071	19
072	19
073	19
074	19
075	20
076	20
077	20
078	20
079	20
CONTACTS	21

Contact details	21
Telephones	21
Office hours	21
Address	21

SPECIFICATIONS

Overview

This 2007 Regal 2700 BowRider For Sale on Norris Lake TN is equipped with a Volvo Penta 8.1Gi V8 Fuel Injected Inboard/Outboard Engine with Duo-Prop Outdrive and features a Head Compartment with a Port-a-Potti, a Double Bimini Top, Cockpit & Bow Covers, Snap-In Cockpit Carpeting, a Cockpit Refrigerator, Removable Lounge Table, a Large Rear Sun Lounge with Walk-Thru Transom & Filler Cushions, an Extended Swim Platform w/Stereo Remote, Driver & Passenger Flip-Up Bolster Seats, Cockpit Sink, Powered Engine Hatch, a Transferable Covered Slip on Norris Lake with an Ozark Front-Mount 9,000lb Lift Available for an Additional Purchase & More!

Basic Information

Category: Boats

Sub Category: Bow Rider

Model Year: 2007

Year Built: 2006

Country: United States

Dimensions

LOA: 28' 6" (8.69mm)

Beam: 8.5

Max Draft: 3' (0.91mm)

Speed, Capacities and Weight

Water Capacity: 11 Gallons

Holding Tank: 2.5 Gal Gallons

Fuel Capacity: 85 Gal Gallons

Accommodations

Total Heads: 1

Hull and Deck Information

Hull Material: Fiberglass

Deck Material: Fiberglass

Hull Configuration: Modified Deep Vee

Engine Information

Engines: 1

Manufacturer: Volvo Penta

Engine Type: I/O

Fuel Type: Gas/Petrol

PHOTOS

004



006



007



008



009



010



011



012



013



014



015



016



017



018



019



020



021



022



023



024



025



026



027



028



029



030



031



032



033



034



035



036



037



038



039



040



041



042



043



044



045



046



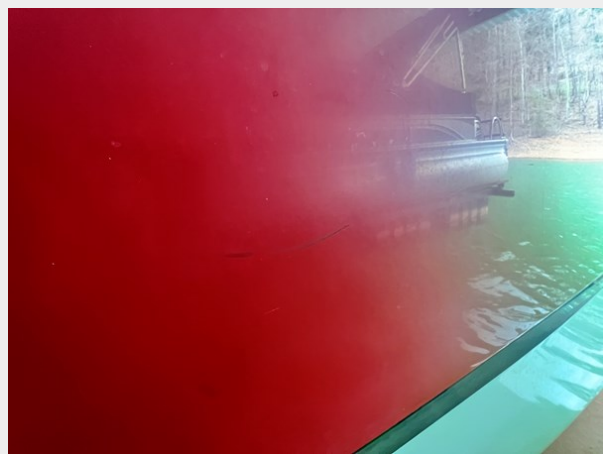
047



048



049



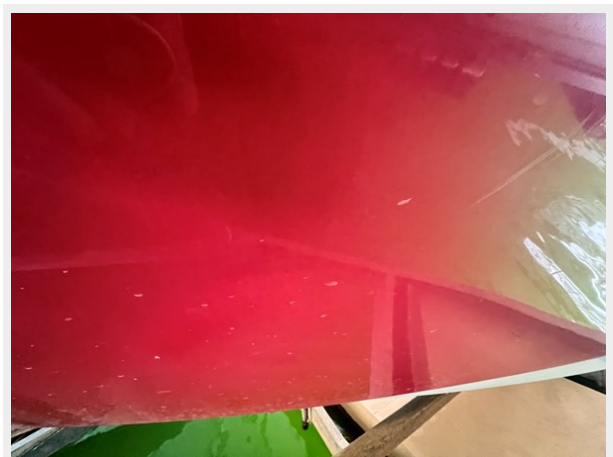
050



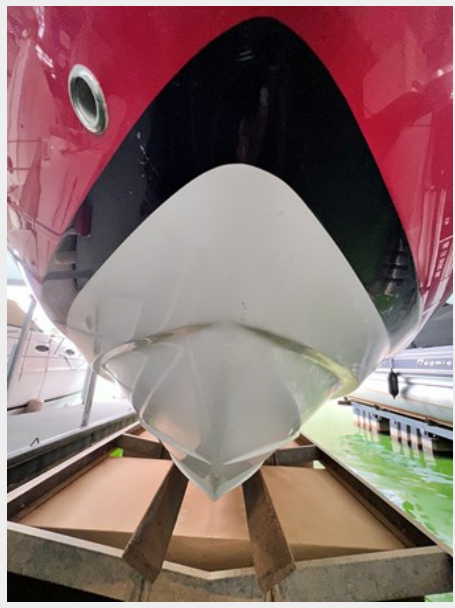
051



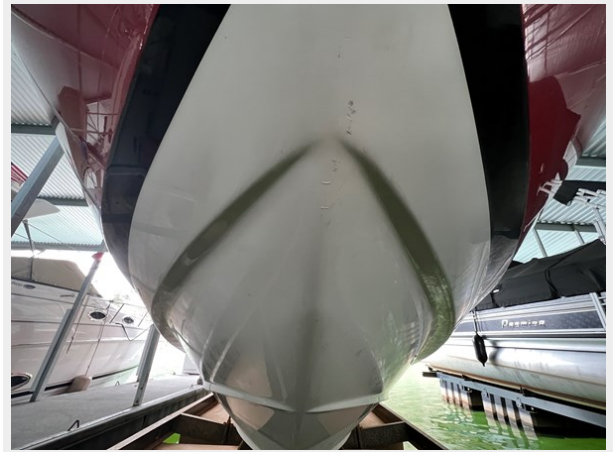
052



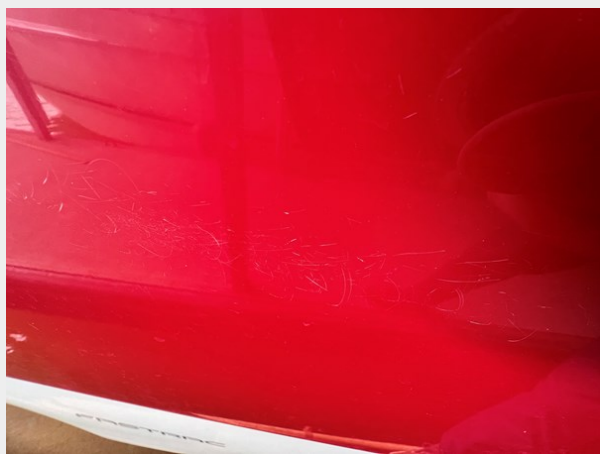
053



054



055



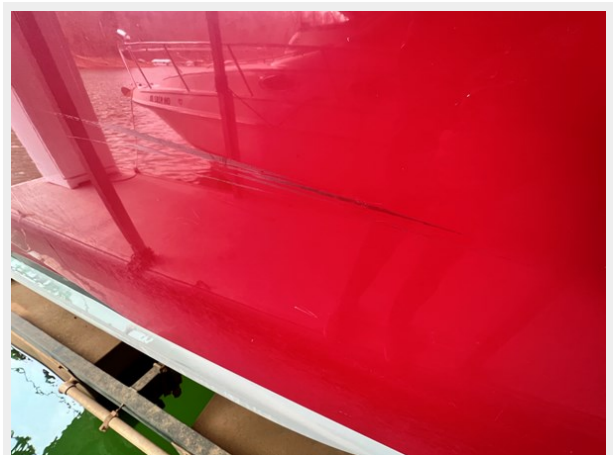
056



057



058



059



060



061



062



063



064



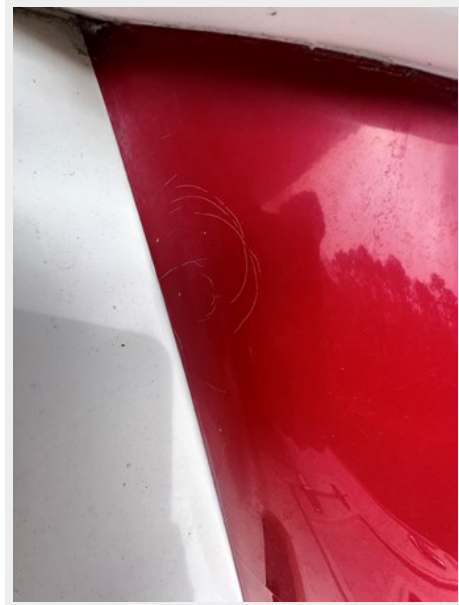
065



066



068



067



069



070



071



072



073



074



075



076



077



078



079



CONTACTS

Andrey Shestakov, leading yacht broker of the sales department of Shestakov Yacht Sales Inc. Shestakov Yacht Sales Inc., the official representative of the Miami/Fort Lauderdale FL headquarters.

Contact details

Email: andrey@shestakovyachtsales.com

Web: shestakovyachtsales.com/en/

Telephones

USA: +1(954)274-4435

Office hours

Monday – Saturday: **9:00 - 21:00** EDT

Sunday: **closed**

Address



Harbour Towne Marina, 850 NE 3rd St,
STE 213, Dania, FL 33004