

ON SPEC ORDER — BAGLIETTO



Builder: BAGLIETTO

Year Built: 2025

Model: Cruising Yacht

Price: PRICE ON APPLICATION

Location: Italy

LOA: 170' 8" (52mm)

Beam: 31.16

Max Draft: 8' 7" (2.6mm)

Cruise Speed: 11 Knots Kts. (13 MPH)

Max Speed: 16 Knots Kts. (18 MPH)

Our experienced yacht broker, Andrey Shestakov, will help you choose and buy a yacht that best suits your needs **On Spec Order — BAGLIETTO** from our catalogue. Presently, at Shestakov Yacht Sales Inc., we have a wide variety of yachts available on our sale's list. We also work in close contact with all the big yacht manufacturers from all over the world.

If you would like to buy a yacht **On Spec Order — BAGLIETTO** or would like help answering any questions concerning purchasing, selling or chartering a yacht, please call **+1(954)274-4435**

TABLE OF CONTENTS

TABLE OF CONTENTS	2
SPECIFICATIONS	3
Overview	3
Basic Information	3
Dimensions	3
Speed, Capacities and Weight	3
Accommodations	3
Hull and Deck Information	4
Engine Information	4
PHOTOS	5
t523	5
t527	5
t5217	7
t5218	7
t5222	8
CONTACTS	11
Contact details	11
Telephones	11
Office hours	11
Address	11

SPECIFICATIONS

Overview

The motor-yacht T52 Hybrid has been designed by Francesco Paszkowski. The Innovated Yacht below 500 GT is Equipped with a Standard Hybrid Propulsion System that will allow to choose a more efficient navigation mode, reducing both costs and environmental impact. When cruising in electrical diesel mode, the T52 Hybrid has a range of up to 7,600 nm, and will be able to remain at anchor up to 10 hours relying on the batteries only. Her two CAT C32 engines, however, allow her to reach a maximum speed of 16 knots and a range of 4,500 nm at 11 knots.

Hull #6 will be ready for delivery in May 2025

Basic Information

Category: Cruising Yacht

Model Year: 2025

Year Built: 2025

Country: Italy

Dimensions

LOA: 170' 8" (52mm)

Beam: 31.16

Max Draft: 8' 7" (2.6mm)

Speed, Capacities and Weight

Cruise Speed: 11 Knots Kts. (13 MPH)

Cruise Speed Range: 4500

Max Speed: 16 Knots Kts. (18 MPH)

Accommodations

Total Cabins: 6

Total Heads: 8

Hull and Deck Information

Hull Material: Steel

Engine Information

Engines: 4

Manufacturer: CAT

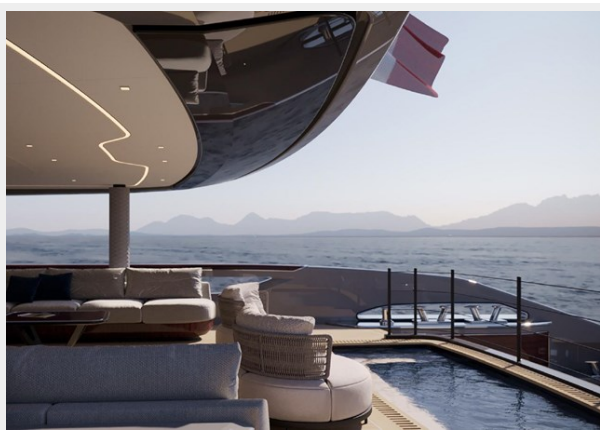
Engine Type: Inboard

Fuel Type: Diesel/Electric

PHOTOS

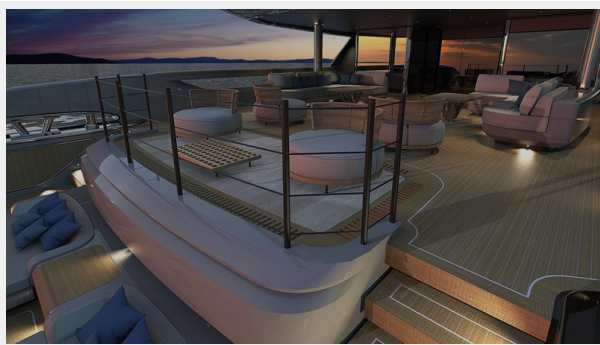


t523



t527





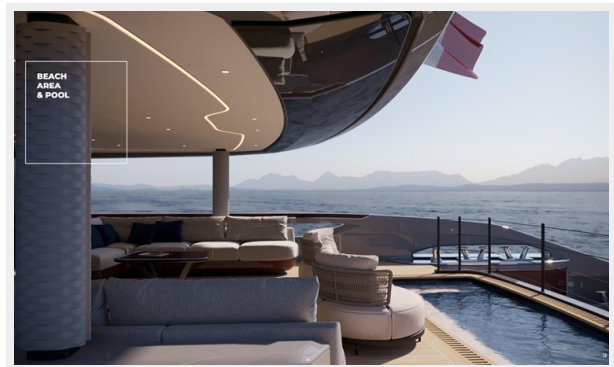
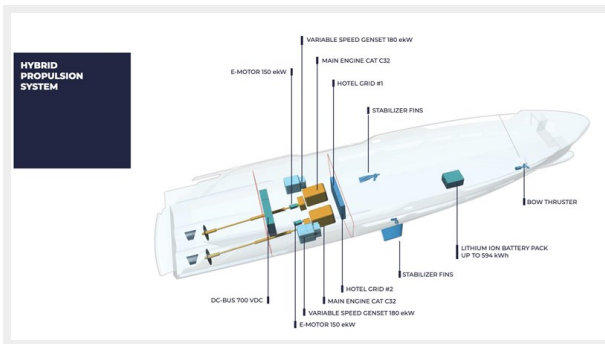
t5217



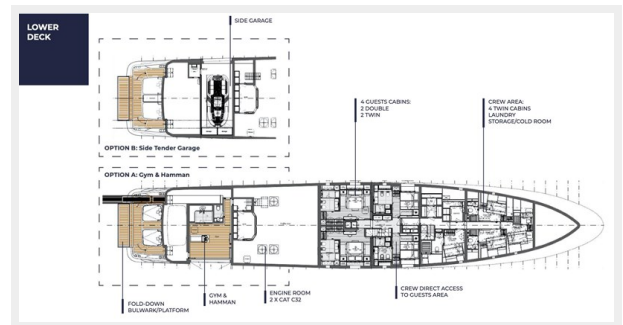
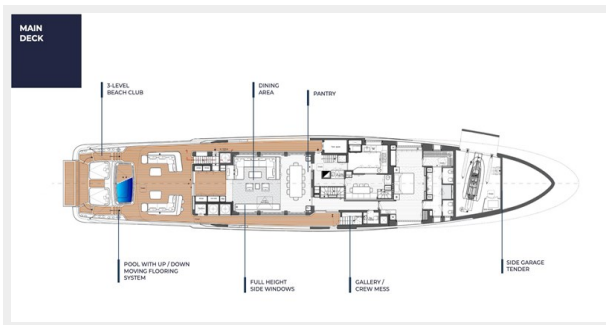
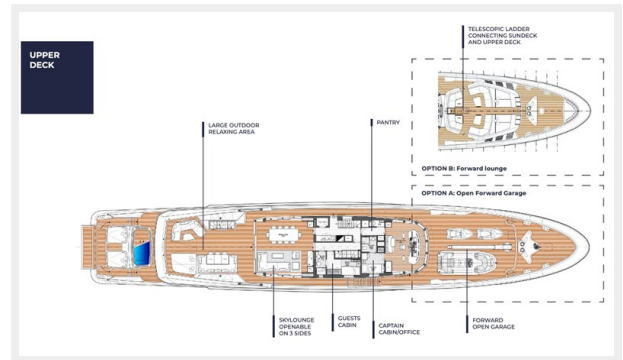
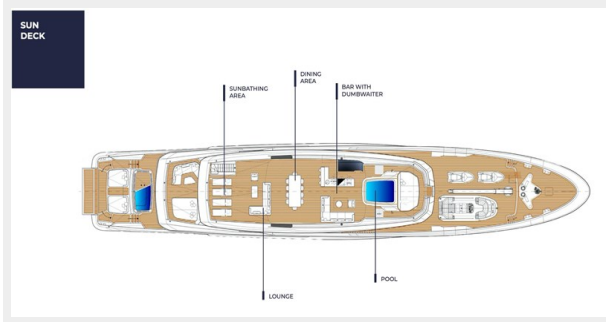
MODE	POWER SOURCES	TOP SPEED	RANGE AT CRUISE SPEED	FUEL CONSUMPTION AT CRUISE SPEED
NIGHT (1) ANCHOR (2)		0	11 hours (1) 8 hours (2)	NONE
FULL ELECTRIC		7 KNOTS (1)	4 hours @ 5 knots (1)	NONE
DIESEL - ELECTRIC (1) (1 GENSET)	 	7.5 KNOTS	7,800 nm @ 6 knots	45 l/h
DIESEL - ELECTRIC (2) (2 GENSET)	 	9.2 KNOTS	5,800 nm @ 8 knots	85 l/h
DIESEL - ELECTRIC (3) (3 GENSET)	 	9.5 KNOTS	4,800 nm @ 9 knots	110 l/h
SHAFT GENERATOR	 	15 KNOTS	3,850 nm @ 12 knots	195 l/h
DIESEL TRADITIONAL	 	16 KNOTS	3,600 nm @ 12 knots 2,000 nm @ 15 knots (85% MCR)	210 l/h 490 l/h

Depending on hotel loads; with a 300 kWh battery pack.
 (1) Night mode: depending on hotel loads; only essential services have been calculated.
 (2) Anchor mode: depending on hotel loads; Fin stabilizers at zero speed considered. Note: preliminary values.
 (3) Diesel Electric mode: -Peak loads will be absorbed by Lithium-ion batteries;
 - Available propulsion power is automatically limited according to necessary hotel loads;
 - Switching between 1,2 or 3 gensets can be automatic or manually operated by Captain;

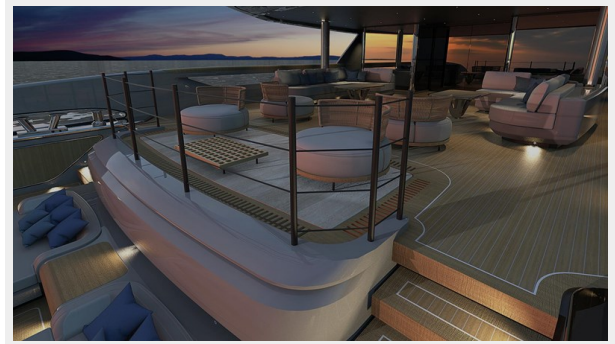
t5218



t5222







CONTACTS

Andrey Shestakov, leading yacht broker of the sales department of Shestakov Yacht Sales Inc. Shestakov Yacht Sales Inc., the official representative of the Miami/Fort Lauderdale FL headquarters.

Contact details

Email: andrey@shestakovyachtsales.com

Web: shestakovyachtsales.com/en/

Telephones

USA: +1(954)274-4435

Office hours

Monday – Saturday: **9:00 - 21:00** EDT

Sunday: **closed**

Address



Harbour Towne Marina, 850 NE 3rd St,
STE 213, Dania, FL 33004