

# 2007 MALIBU WAKESETTER 247LSV CINOH — MALIBU



**Builder:** MALIBU

**Year Built:** 2007

**Model:** Boats

**Price:** PRICE ON APPLICATION

**Location:** United States

**LOA:** 24' 7" (7.49mm)

**Beam:** 8.5

**Max Draft:** 2' 3" (0.69mm)

Our experienced yacht broker, Andrey Shestakov, will help you choose and buy a yacht that best suits your needs 2007 Malibu Wakesetter 247LSV CINOH — MALIBU from our catalogue. Presently, at Shestakov Yacht Sales Inc., we have a wide variety of yachts available on our sale's list. We also work in close contact with all the big yacht manufacturers from all over the world.

If you would like to buy a yacht 2007 Malibu Wakesetter 247LSV CINOH — MALIBU or would like help answering any questions concerning purchasing, selling or chartering a yacht, please call +1(954)274-4435

# TABLE OF CONTENTS

---

TABLE OF CONTENTS	2
SPECIFICATIONS	5
Overview	5
Basic Information	5
Dimensions	5
Speed, Capacities and Weight	5
Hull and Deck Information	5
Engine Information	6
PHOTOS	7
IMG_8147	7
IMG_8144	7
IMG_8145	7
IMG_8819	7
IMG_8820	7
IMG_8821	7
IMG_8824	8
IMG_8846	8
IMG_8848	8
IMG_8851	8
IMG_8853	8
IMG_8855	8
IMG_8856	9
IMG_8857	9
IMG_8858	9
IMG_8859	9
IMG_8860	9
IMG_8861	9
IMG_8862	10

---

IMG_8863	10
IMG_8865	10
IMG_8866	10
IMG_8867	10
IMG_8868	10
IMG_8870	11
IMG_8869	11
IMG_8871	11
IMG_8872	11
IMG_8873	11
IMG_8874	11
IMG_8875	12
IMG_8876	12
IMG_8877	12
IMG_8878	12
IMG_8880	12
IMG_8881	12
IMG_8882	13
IMG_8883	13
IMG_8884	13
IMG_8890	13
IMG_8891	13
IMG_8892	13
IMG_8894	14
IMG_8895	14
IMG_8899	14
IMG_8900	14
IMG_8902	14
IMG_8903	14

---

---

IMG_8904	15
IMG_8907	15
IMG_8910	15
IMG_8913	15
IMG_8914	15
IMG_8920	15
IMG_8921	16
IMG_8925	16
IMG_8926	16
IMG_8927	16
IMG_8928	16
IMG_8929	16
IMG_8930	17
IMG_8931	17
IMG_8933	17
IMG_8934	17
IMG_8936	17
IMG_8938	17
IMG_8939	18
IMG_8940	18
IMG_8941	18
IMG_8942	18
IMG_8943	18
CONTACTS	19
Contact details	19
Telephones	19
Office hours	19
Address	19

---

---

# SPECIFICATIONS

---

## Overview

---

This 2007 Malibu Wakesetter 247LSV is equipped with a 6.3L Indmar Hammerhead 383 Inboard V-Drive Engine and features a Powered Wedge, Cruise Control, a Cockpit Heater, Malibu Launch Ballast System (4 Tanks), Wakeboard Tower with Tower-Mount Bimini Top, (2) Tower Speakers, & a Pair of Board Racks, an Upgraded Sony Stereo with 6 Cockpit Speakers, 2 Amplifiers, and a Subwoofer, Dual Batteries with Selector Switch, an Under Water Light, a Mooring Cover, 2022 Trailer w/Brakes, & Much More!

## Basic Information

---

**Category:** Boats

**Sub Category:** Ski or Wake Boat

**Model Year:** 2007

**Year Built:** 2007

**Country:** United States

## Dimensions

---

**LOA:** 24' 7" (7.49mm)

**Beam:** 8.5

**Max Draft:** 2' 3" (0.69mm)

## Speed, Capacities and Weight

---

**Fuel Capacity:** 84 Gal Gallons

## Hull and Deck Information

---

**Hull Material:** Fiberglass

**Hull Configuration:** Modified V-Hull

---

## Engine Information

---

**Engines:** 1

**Manufacturer:** Indmar

**Engine Type:** Inboard

**Fuel Type:** Gas/Petrol

# PHOTOS

IMG\_8147



IMG\_8144



IMG\_8145



IMG\_8819



IMG\_8820



IMG\_8821



IMG\_8824



IMG\_8846



IMG\_8848



IMG\_8851



IMG\_8853



IMG\_8855





IMG\_8856



IMG\_8857



IMG\_8858



IMG\_8859



IMG\_8860



IMG\_8861



IMG\_8862



IMG\_8863



IMG\_8865



IMG\_8866



IMG\_8867



IMG\_8868



IMG\_8869



IMG\_8870



IMG\_8871



IMG\_8872



IMG\_8873



IMG\_8874



IMG\_8875



IMG\_8876



IMG\_8877



IMG\_8878



IMG\_8880



IMG\_8881



IMG\_8882



IMG\_8883



IMG\_8884



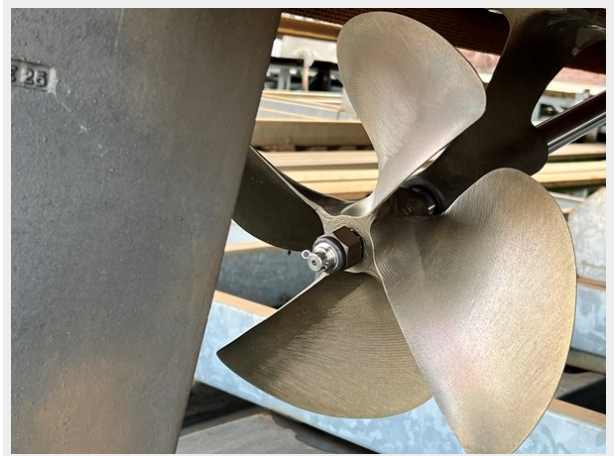
IMG\_8890



IMG\_8891



IMG\_8892



IMG\_8894



IMG\_8895



IMG\_8899



IMG\_8900



IMG\_8902



IMG\_8903



IMG\_8904



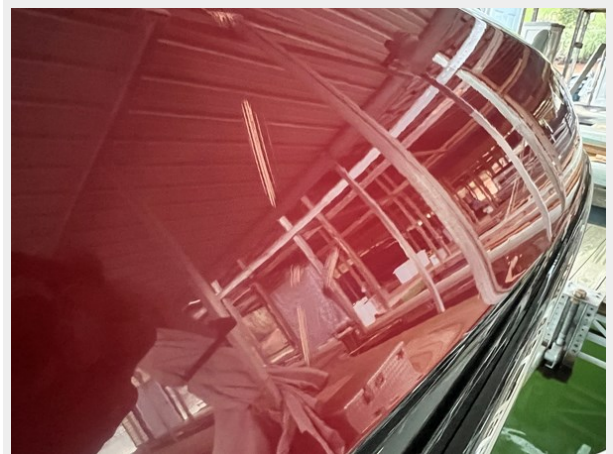
IMG\_8907



IMG\_8910



IMG\_8913



IMG\_8914



IMG\_8920



IMG\_8921



IMG\_8925



IMG\_8926



IMG\_8927



IMG\_8928



IMG\_8929





IMG\_8930



IMG\_8931



IMG\_8933



IMG\_8934



IMG\_8936



IMG\_8938



IMG\_8939



IMG\_8940



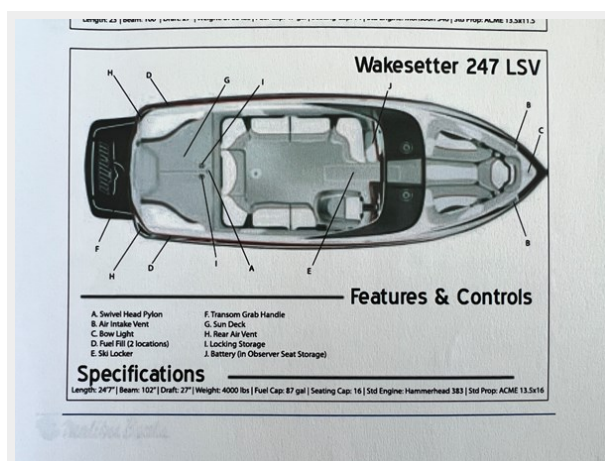
IMG\_8941



IMG\_8942



IMG\_8943



# CONTACTS

---

Andrey Shestakov, leading yacht broker of the sales department of Shestakov Yacht Sales Inc. Shestakov Yacht Sales Inc., the official representative of the Miami/Fort Lauderdale FL headquarters.

## Contact details

---

Email: [andrey@shestakovyachtsales.com](mailto:andrey@shestakovyachtsales.com)

Web: [shestakovyachtsales.com/en/](http://shestakovyachtsales.com/en/)

## Telephones

---

USA: +1(954)274-4435

## Office hours

---

Monday – Saturday: **9:00 - 21:00** EDT

Sunday: **closed**

## Address

---



Harbour Towne Marina, 850 NE 3rd St,  
STE 213, Dania, FL 33004